

LEA Name : Pine Grove Area SD  
Address : 103 School St  
Pine Grove, PA 17963

County : Schuylkill  
AUN Number : 129546003  
LEA Type : SD

## Annual Financial Report Accuracy Certification Statement

For Fiscal Year Ending  
6/30/2016

Pennsylvania Department of Education  
&

Office of Comptroller Operations

PDE-2056: Intermediate Unit

PDE-2057: School District, AVTS/CTC, Charter School,  
and Special Program Jointure

**CERTIFICATION:** By signing this page I agree that the electronic data submitted is a complete and accurate statement of the financial operations and status of the local education agency for the fiscal year. It has been prepared in accordance with generally accepted accounting principles and established Commonwealth of PA reporting guidelines.

  
Chief School Administrator Signature

  
Board Secretary Signature

12/11/17  
Date

12/11/17  
Date

Jodie Dermo

Contact Person

jdermo@pgasd.com

Contact Person E-mail Address

(570)345-2731

Ext :350

Contact Person Telephone Number

(570)345-2790

Contact Person Fax Number

# Audit Certification

## Annual Financial Report:

For Fiscal Year Ending 6/30/2016

(Pursuant to PA School Code Section 218(b))

LEA Name : Pine Grove Area SD

AUN Number : 129546003

County : Schuylkill

Audit Certification Due:  
12/31/2016

This certification is applicable to:

☐ Orig. Annual Financial Report submitted to  
Comptroller Operations: \_\_\_\_\_ Date \_\_\_\_\_

☒ Annual Financial Report revisions submitted on: 12/11/17  
Date

Auditing Firm: Jones & Co. P.C.  
110 North Second Street  
Pottsville, PA 17901

Auditor Contact Name: Edwin H. Ebling CPA  
Auditor Phone: (570) 622-5010  
Auditor E-mail: jonescpa@comcast.net

CERTIFICATION: By signing this page I agree that the financial statements of the school have been properly audited as noted above pursuant to Article XXIV, and in the auditor's professional opinion, the Annual Financial Report (PDE-2057) submitted on the date referenced is materially consistent with the audited financial statements.

Chief School Administrator

[Signature]  
Signature

12/11/17  
Date

Board Secretary

[Signature]  
Signature

12/11/17  
Date

Jodie Dermo

Contact Person

jdermo@pgasd.com

Contact Person E-mail Address

(570)345-2731

Contact Person Telephone Number

(570)345-2790

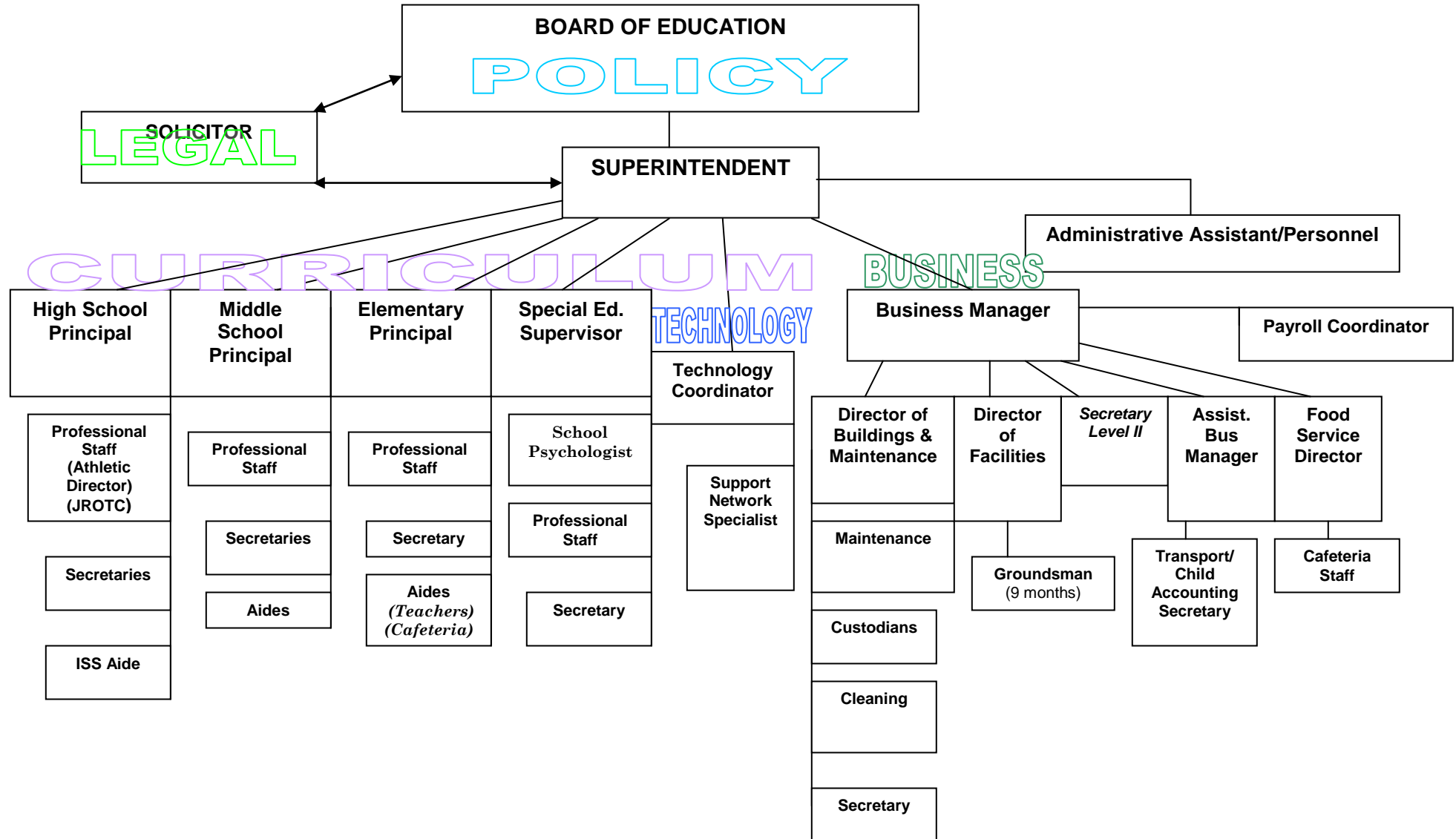
Contact Person Fax Number

Ext :350

# PINE GROVE AREA SCHOOL DISTRICT ORGANIZATIONAL CHART

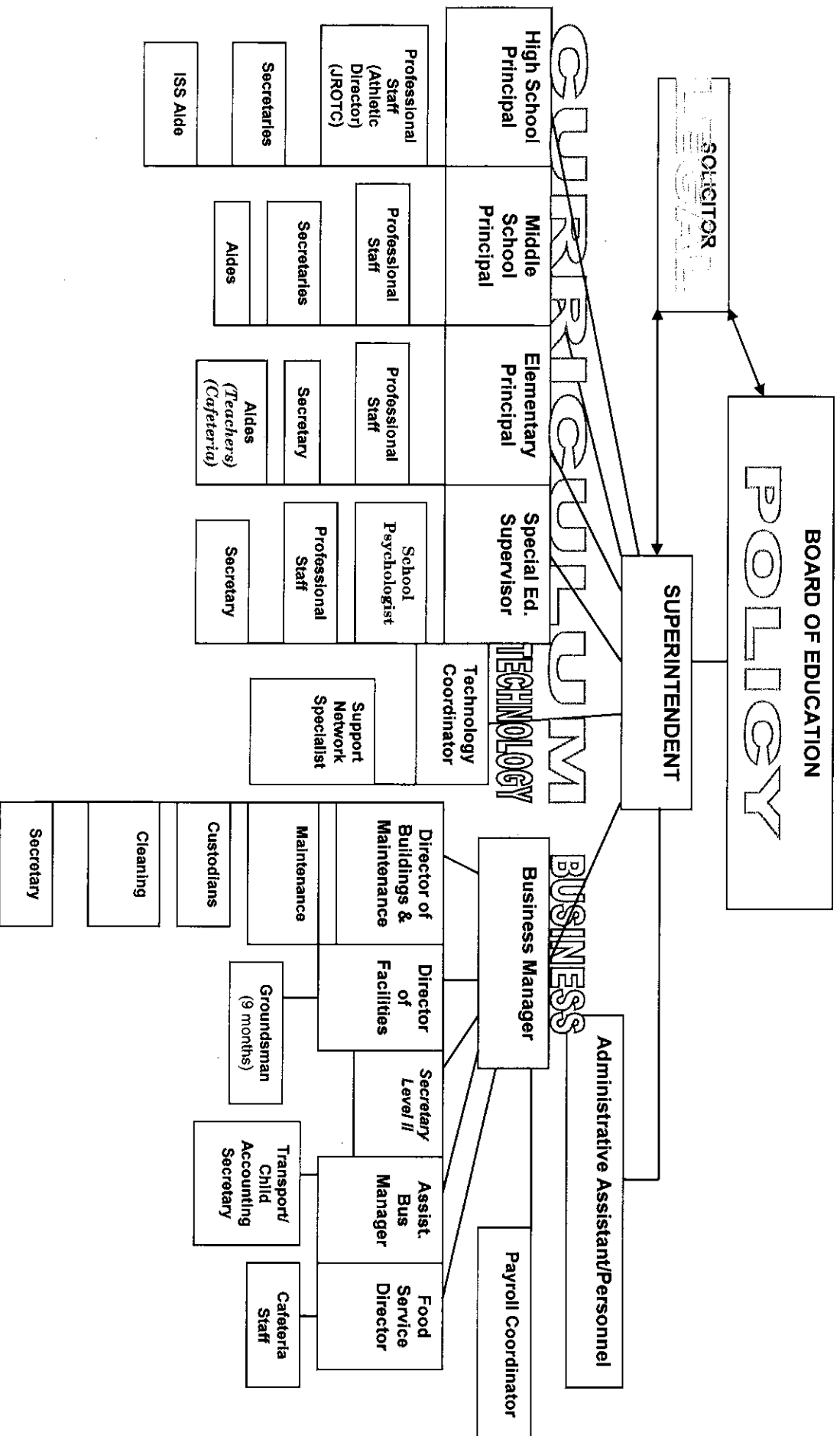
No. 008

Local Board Procedures  
Organizational Chart



# PINE GROVE AREA SCHOOL DISTRICT ORGANIZATIONAL CHART

No. 008  
Local Board Procedures  
Organizational Chart



<u>Val Number</u>	<u>Description</u>	<u>Justification</u>
42420	<p>Expenditure Detail: Total current year 2700-513 expenditure varies from prior year by 10%. Correct the data or enter a justification.</p> <p>2700-513, AFR Exp Detail: \$1,197,073.23 2700-513, PY AFR Amount: \$1,062,421.03</p>	<p>Expenditures went up by more than 10% from last year. These amounts have been reviewed and verified to be accurate.</p>
50430	<p>SESS - 2160 Social Work Services: SESS Schedule amounts for Special Education vary from prior year by 40% or more. Correct the data or enter a justification.</p> <p>SESS Schedule 2160: \$49,010.00 Prior Year SESS Schedule 2160: \$31,934.63</p>	<p>Expenditures went up by more than 40% from last year. These amounts have been reviewed and verified to be accurate.</p>

LEA : 129546003 Pine Grove Area SD

Printed 12/5/2017 9:43:51 AM

Amounts Expressed in Whole Dollars		<u>General Fund</u> <u>(10)</u>	<u>Public Purpose Trust</u> <u>(27)</u>	<u>Other Compt Approved</u> <u>(28)</u>	<u>Athletic / Activity</u> <u>(29)</u>	<u>Capital Reserve (690.</u> <u>1850)</u> <u>(31)</u>
<b>Assets And Deferred Outflows Of Resources</b>						
<b>Assets</b>						
0100	Cash and Cash Equivalents	5,697,064				
0110	Investments	3,004,917				
0120	Taxes Receivable	168,995				
0130	Due From Other Funds	694,296				
0141	Due From Other Governments					
0142	State Revenue Receivable	679,939				
0143	Federal Revenue Receivable	571,045				
0145	Other Intergovernmental Revenue Receivable	288,724				
0146	Due from Primary Government					
0147	Due from Component Unit					
0150	Other Receivables	38,365				
0170	Inventories	53,490				
0180	Prepaid Expenses (Expenditures)	109,508				
0190	Other Current Assets					
<b>Total Assets</b>		<b>\$11,306,343</b>				
0910	Deferred Outflows of Resources					
<b>Total Assets And Deferred Outflows Of Resources</b>		<b>\$11,306,343</b>				

LEA : 129546003     Pine Grove Area SD

Printed 12/5/2017 9:43:51 AM

Amounts Expressed in Whole Dollars		<u>Capital Reserve (1431)</u> <u>(32)</u>	<u>Other Capital Projects</u> <u>Fund</u> <u>(39)</u>	<u>Debt Service</u> <u>(40)</u>	<u>Permanent</u> <u>(90)</u>	<u>Total Governmental</u> <u>Funds</u>
<b>Assets And Deferred Outflows Of Resources</b>						
<b>Assets</b>						
0100	Cash and Cash Equivalents		1,562,717			7,259,781
0110	Investments		25,287			3,030,204
0120	Taxes Receivable					168,995
0130	Due From Other Funds					694,296
0141	Due From Other Governments					
0142	State Revenue Receivable					679,939
0143	Federal Revenue Receivable					571,045
0145	Other Intergovernmental Revenue Receivable					288,724
0146	Due from Primary Government					
0147	Due from Component Unit					
0150	Other Receivables					38,365
0170	Inventories					53,490
0180	Prepaid Expenses (Expenditures)					109,508
0190	Other Current Assets					
<b>Total Assets</b>			<b>\$1,588,004</b>			<b>\$12,894,347</b>
0910	Deferred Outflows of Resources					
<b>Total Assets And Deferred Outflows Of Resources</b>			<b>\$1,588,004</b>			<b>\$12,894,347</b>

LEA : 129546003     Pine Grove Area SD

Printed 12/5/2017 9:43:51 AM

Amounts Expressed in Whole Dollars		<u>General Fund</u> <u>(10)</u>	<u>Public Purpose Trust</u> <u>(27)</u>	<u>Other Compt Approved</u> <u>(28)</u>	<u>Athletic / Activity</u> <u>(29)</u>	<u>Capital Reserve (690.</u> <u>1850)</u> <u>(31)</u>
<b>Liabilities And Deferred Inflows Of Resources And Fund Balances</b>						
<b>Liabilities</b>						
0400	Due to Other Funds	57,724				
0411	Due to Other Governments					
0412	Due to Primary Government					
0413	Due to Component Unit					
0420	Accounts Payable	391,343				
0430	Contracts Payable					
0440	Current Portion of Long-Term Debt					
0450	Short-Term Payables					
0461	Accrued Salaries and Benefits	1,174,009				
0462	Payroll Deductions and Withholding	5,185				
0480	Unearned Revenues	451,462				
0490	Other Current Liabilities	717,894				
<b>Total Liabilities</b>		<b>\$2,797,617</b>				
0950	Deferred Inflows of Resources					
<b>Fund Balances</b>						
0810	Nonspendable Fund Balance					
0820	Restricted Fund Balance					
0830	Committed Fund Balance	300,000				
0840	Assigned Fund Balance					
0850	Unassigned Fund Balance	8,208,726				
<b>Total Fund Balances</b>		<b>\$8,508,726</b>				
<b>Total Liabilities, Deferred Inflows Of Resources And Fund Balances</b>		<b>\$11,306,343</b>				



LEA : 129546003     Pine Grove Area SD

Printed 12/5/2017 9:43:51 AM

Amounts Expressed in Whole Dollars		<u>Capital Reserve (1431)</u> <u>(32)</u>	<u>Other Capital Projects</u> <u>Fund</u> <u>(39)</u>	<u>Debt Service</u> <u>(40)</u>	<u>Permanent</u> <u>(90)</u>	<u>Total Governmental</u> <u>Funds</u>
<b>Liabilities And Deferred Inflows Of Resources And Fund Balances</b>						
<b>Liabilities</b>						
0400	Due to Other Funds					57,724
0411	Due to Other Governments					
0412	Due to Primary Government					
0413	Due to Component Unit					
0420	Accounts Payable		96,456			487,799
0430	Contracts Payable					
0440	Current Portion of Long-Term Debt					
0450	Short-Term Payables					
0461	Accrued Salaries and Benefits					1,174,009
0462	Payroll Deductions and Withholding					5,185
0480	Unearned Revenues					451,462
0490	Other Current Liabilities					717,894
<b>Total Liabilities</b>			<b>\$96,456</b>			<b>\$2,894,073</b>
0950	Deferred Inflows of Resources					
<b>Fund Balances</b>						
0810	Nonspendable Fund Balance					
0820	Restricted Fund Balance		1,491,548			1,491,548
0830	Committed Fund Balance					300,000
0840	Assigned Fund Balance					
0850	Unassigned Fund Balance					8,208,726
<b>Total Fund Balances</b>			<b>\$1,491,548</b>			<b>\$10,000,274</b>
<b>Total Liabilities, Deferred Inflows Of Resources And Fund Balances</b>			<b>\$1,588,004</b>			<b>\$12,894,347</b>

Amounts Expressed in Whole Dollars	<u>General Fund</u> <u>(10)</u>	<u>Public Purpose Trust</u> <u>(27)</u>	<u>Other Compt Approved</u> <u>(28)</u>	<u>Athletic / Activity</u> <u>(29)</u>	<u>Capital Reserve (690.</u> <u>1850)</u> <u>(31)</u>
<b>Revenues</b>					
6000 Revenue from Local Sources	10,729,618				
7000 Revenue from State Sources	11,177,903				
8000 Revenue from Federal Sources	415,779				
<b>Total Revenues</b>	<b>\$22,323,300</b>				
<b>Expenditures</b>					
1000 Instruction	12,860,973				
2000 Support Services	6,461,024				
3000 Operation of Non-Instructional Services	585,776				
4000 Facilities Acquisition, Construction and Improvement Services					
5110 Debt Service	1,713,623				
5130 Refund of Prior Year Revenues / Receipts	7,136				
5140 Short-Term Borrowing – Interest and Costs					
<b>Total Expenditures</b>	<b>\$21,628,532</b>				
<b>Excess (Deficiency) Of Revenues Over Expenditures</b>	<b>\$694,768</b>				
<b>Other Financing Sources (Uses)</b>					
9110 Face Value of Bonds Issued					
9120 Proceeds from Refunding of Bonds					
9130 Bond Premiums					
9200 Proceeds from Extended-Term Financing					
9300 Interfund Transfers - IN					
9400 Sale of or Compensation for Loss of Fixed Assets					
9710 Transfers from Component Units					
9720 Transfers from Primary Governments					
9910 Other Financing Sources Not Listed in the 9000 Series					
9990 Insurance Recoveries					
5120 Debt Service – Refunded Bonds					
5150 Bond Discounts					
5200 Interfund Transfers – Out					
5300 Transfers Out to Component Units/Primary Governments					
<b>Total Other Financing Sources (Uses)</b>					

LEA : 129546003 Pine Grove Area SD

Printed 12/5/2017 9:43:53 AM

Amounts Expressed in Whole Dollars		<u>Capital Reserve (1431)</u> <u>(32)</u>	<u>Other Capital Projects</u> <u>Fund</u> <u>(39)</u>	<u>Debt Service</u> <u>(40)</u>	<u>Permanent</u> <u>(90)</u>	<u>Total Governmental</u> <u>Funds</u>
<b>Revenues</b>						
6000	Revenue from Local Sources		6,798			10,736,416
7000	Revenue from State Sources					11,177,903
8000	Revenue from Federal Sources					415,779
<b>Total Revenues</b>			<b>\$6,798</b>			<b>\$22,330,098</b>
<b>Expenditures</b>						
1000	Instruction					12,860,973
2000	Support Services					6,461,024
3000	Operation of Non-Instructional Services					585,776
4000	Facilities Acquisition, Construction and Improvement Services		529,045			529,045
5110	Debt Service					1,713,623
5130	Refund of Prior Year Revenues / Receipts					7,136
5140	Short-Term Borrowing – Interest and Costs					
<b>Total Expenditures</b>			<b>\$529,045</b>			<b>\$22,157,577</b>
<b>Excess (Deficiency) Of Revenues Over Expenditures</b>			<b>(\$522,247)</b>			<b>\$172,521</b>
<b>Other Financing Sources (Uses)</b>						
9110	Face Value of Bonds Issued					
9120	Proceeds from Refunding of Bonds					
9130	Bond Premiums					
9200	Proceeds from Extended-Term Financing					
9300	Interfund Transfers - IN					
9400	Sale of or Compensation for Loss of Fixed Assets					
9710	Transfers from Component Units					
9720	Transfers from Primary Governments					
9910	Other Financing Sources Not Listed in the 9000 Series					
9990	Insurance Recoveries					
5120	Debt Service – Refunded Bonds					
5150	Bond Discounts					
5200	Interfund Transfers – Out					
5300	Transfers Out to Component Units/Primary Governments					
<b>Total Other Financing Sources (Uses)</b>						

Amounts Expressed in Whole Dollars		<u>General Fund</u> <u>(10)</u>	<u>Public Purpose Trust</u> <u>(27)</u>	<u>Other Compt Approved</u> <u>(28)</u>	<u>Athletic / Activity</u> <u>(29)</u>	<u>Capital Reserve</u> <u>(690.</u> <u>1850)</u> <u>(31)</u>
<b>Special And Extraordinary Items</b>						
9920	Special Items – Gains					
9930	Extraordinary Items – Gains					
5520	Special Items – Losses					
5530	Extraordinary Items – Losses					
<b>Net Change In Fund Balances</b>		<b>\$694,768</b>				
<b>Fund Balance</b>						
0001	Fund Balance - Beginning of Fiscal Year	7,813,958				
<b>Fund Balance - End Of Year</b>		<b>\$8,508,726</b>				

Amounts Expressed in Whole Dollars		<u>Capital Reserve (1431)</u> <u>(32)</u>	<u>Other Capital Projects</u> <u>Fund</u> <u>(39)</u>	<u>Debt Service</u> <u>(40)</u>	<u>Permanent</u> <u>(90)</u>	<u>Total Governmental</u> <u>Funds</u>
<b>Special And Extraordinary Items</b>						
9920	Special Items – Gains					
9930	Extraordinary Items – Gains					
5520	Special Items – Losses					
5530	Extraordinary Items – Losses					
<b>Net Change In Fund Balances</b>			<b>(\$522,247)</b>			<b>\$172,521</b>
<b>Fund Balance</b>						
0001	Fund Balance - Beginning of Fiscal Year		2,013,794			9,827,752
<b>Fund Balance - End Of Year</b>			<b>\$1,491,547</b>			<b>\$10,000,273</b>

LEA : 129546003     Pine Grove Area SD

Printed 12/5/2017 9:43:53 AM

Amounts Expressed in Whole Dollars	<u>Food Service</u> <u>(51)</u>	<u>Child Care</u> <u>Operations</u> <u>(52)</u>	<u>Other Enterprise</u> <u>(58)</u>	<u>TOTAL</u>	<u>Internal Service</u> <u>(60)</u>
<b>Assets And Deferred Outflows Of Resources</b>					
<b>Current Assets</b>					
0100 Cash and Cash Equivalents	1,016,865			1,016,865	
0110 Investments					
0130 Due From Other Funds					
0141 Due From Other Governments					
0142 State Revenue Receivable	477			477	
0143 Federal Revenue Receivable	6,586			6,586	
0146 Due from Primary Government					
0147 Due from Component Unit					
0150 Other Receivables	5,260			5,260	
0170 Inventories	2,971			2,971	
0180 Prepaid Expenses (Expenditures)					
0190 Other Current Assets					
<b>Total Current Assets</b>	<b>\$1,032,159</b>			<b>\$1,032,159</b>	
<b>Noncurrent Assets</b>					
0211 Land					
0212 Site Improvements (Net)					
0220 Buildings and Building Improvements (Net)					
0230 Machinery, Equipment and Furniture (Net)	3,894			3,894	
0250 Construction in Progress					
0260 Long Term Prepayments					
0290 Other Noncurrent Assets					
<b>Total Noncurrent Assets</b>	<b>\$3,894</b>			<b>\$3,894</b>	
0910 Deferred Outflows of Resources					
<b>Total Assets And Deferred Outflows Of Resources</b>	<b>\$1,036,053</b>			<b>\$1,036,053</b>	

LEA : 129546003     Pine Grove Area SD

Printed 12/5/2017 9:43:53 AM

Amounts Expressed in Whole Dollars	Food Service (51)	Child Care Operations (52)	Other Enterprise (58)	TOTAL	Internal Service (60)
<b>Liabilities And Deferred Inflows Of Resources And Net Position</b>					
<b>Current Liabilities</b>					
0400 Due to Other Funds	692,711			692,711	
0411 Due to Other Governments					
0413 Due to Component Unit					
0420 Accounts Payable	16,683			16,683	
0430 Contracts Payable					
0440 Current Portion of Long-Term Debt					
0450 Short-Term Payables					
0461 Accrued Salaries and Benefits					
0462 Payroll Deductions and Withholding					
0480 Unearned Revenues	2,971			2,971	
0490 Other Current Liabilities	14,006			14,006	
<b>Total Current Liabilities</b>	<b>\$726,371</b>			<b>\$726,371</b>	
<b>Noncurrent Liabilities</b>					
0510 Bonds Payable					
0520 Extended-Term Financing Agreements Payable					
0530 Lease-Purchase Obligations					
0540 Accumulated Compensated Absences					
0550 Authority Lease Obligations					
0560 Other Post-Employment Benefits (OPEB)					
0570 Net Pension Liability					
0599 Other Noncurrent Liabilities					
<b>Total Noncurrent Liabilities</b>					
<b>Total Liabilities</b>	<b>\$726,371</b>			<b>\$726,371</b>	
0950 Deferred Inflows of Resources					
<b>Net Position</b>					
0791 Net Investment in Capital Assets	3,894			3,894	
0008 Restricted Net Position (0792 – 0798)					
0799 Unrestricted Net Position	305,788			305,788	
<b>Total Net Position</b>	<b>\$309,682</b>			<b>\$309,682</b>	
<b>Total Liabilities And Deferred Inflows Of Resources And Net Position</b>	<b>\$1,036,053</b>			<b>\$1,036,053</b>	

Amounts Expressed in Whole Dollars	Food Service (51)	Child Care Operations (52)	Other Enterprise (58)	TOTAL	Internal Service (60)
<b>Operating Revenues</b>					
6600 Food Service Revenue	472,127			472,127	
0071 Charges for Services					
0072 Other Operating Revenue					
<b>Total Operating Revenues</b>	<b>\$472,127</b>			<b>\$472,127</b>	
<b>Operating Expenses</b>					
100 Personnel Services – Salaries	101,895			101,895	
200 Personnel Services – Employee Benefits	46,010			46,010	
300 Purchased Professional and Technical Services					
400 Purchased Property Services	4,382			4,382	
500 Other Purchased Services	708,410			708,410	
600 Supplies	44,666			44,666	
740 Depreciation	625			625	
810 Dues and Fees	564			564	
890 Miscellaneous Expenditures					
<b>Total Operating Expenses</b>	<b>\$906,552</b>			<b>\$906,552</b>	
<b>Operating Income (Loss)</b>	<b>(\$434,425)</b>			<b>(\$434,425)</b>	
<b>Non Operating Revenues (Expenses)</b>					
6500 Earnings on Investments	1,473			1,473	
6920 Contributions and Donations from Private Sources					
6930 Gains or Losses on Sale of Fixed Assets					
6991 Refunds of a Prior Year Expenditure	11,273			11,273	
7000 Revenue from State Sources	41,030			41,030	
8000 Revenue from Federal Sources	402,981			402,981	
820 Claims and Judgments Against the LEA					
830 Interest					
<b>TOTAL Non Operating Revenues (Expenses)</b>	<b>\$456,757</b>			<b>\$456,757</b>	
<b>Income (Loss) Before Contributions And Transfers</b>	<b>\$22,332</b>			<b>\$22,332</b>	



Amounts Expressed in Whole Dollars	<u>Food Service</u> <u>(51)</u>	<u>Child Care Operations</u> <u>(52)</u>	<u>Other Enterprise</u> <u>(58)</u>	<u>TOTAL</u>	<u>Internal Service</u> <u>(60)</u>
<b>Contributions, Transfers, and Special and Extraordinary Items</b>					
5200 Interfund Transfers – Out					
5300 Transfers Out to Component Units/Primary Governments					
5520 Special Items – Losses					
5530 Extraordinary Items – Losses					
9300 Interfund Transfers - IN					
9500 Capital Contributions					
9700 Transfers IN From Component Units/Primary Governments					
9920 Special Items – Gains					
9930 Extraordinary Items – Gains					
<b>Change In Net Position</b>	<b>\$22,332</b>			<b>\$22,332</b>	
0002 Net Position - Beginning of Fiscal Year	287,350			287,350	
0003 Accounting Changes / Residual Equity Transfers					
<b>Net Position - End Of Year</b>	<b>\$309,682</b>			<b>\$309,682</b>	

LEA : 129546003      Pine Grove Area SD

Printed 12/5/2017 9:43:56 AM

Amounts Expressed in Whole Dollars	Food Service (51)	Child Care Operations (52)	Other Enterprise (58)	TOTAL	Internal Service(60)
<b>Cash Flows From Operating Activities</b>					
0011 Cash Receipts From Users	465,267			465,267	
0012 Cash Receipts From Assessments Made to Other Funds					
0013 Cash Receipts From Earnings on Investments					
0014 Cash Receipts From Other Operating Revenue					
0015 Cash Payments To Employees For Services					
0016 Cash Payments For Insurance Claims					
0017 Cash Payments To Suppliers For Goods and Services	125,185			125,185	
0018 Cash Payments For Other Operating Expenses	124,878			124,878	
<b>Net Cash Provided By (Used For) Operating Activities</b>	<b>\$215,204</b>			<b>\$215,204</b>	
<b>Cash Flows From Non-Capital Financing Activities</b>					
0021 Receipts From Local Sources - 6000					
0022 Receipts From State Sources - 7000	41,030			41,030	
0023 Receipts From Federal Sources -8000	402,981			402,981	
0024 Notes and Loans Received (Repaid)					
0025 Interest Paid on Notes/Loans - 5100-830					
0026 Operating Transfers In (Out)/Residual Equity Trans					
0027 Operating Transfers In (Out) Primary Government / Comp Unit					
0028 Receipts From Refund of Prior Year Expenditures - 6991	11,273			11,273	
0029 Special and Extraordinary Gains (losses)					
<b>Net Cash Prov By (Used for) Non-Capital Financing Activities</b>	<b>\$455,284</b>			<b>\$455,284</b>	
<b>Cash Flows From Capital and Related Financing Activities</b>					
0031 Payments For Fac Acq, Const, and Imp - 4000					
0032 Gain / (Loss) on Sale of Fixed Assets - 6930					
0033 Proceeds From Extended Term Financing - 9200					
0034 Principal Paid on Financing Agreements					
0035 Interest Paid on Financing Agreements - 5100-830					
0036 (Inc) Dec in Contributed Capital					
<b>Net Cash Prov By (Used for) Capital and Related Financing Activities</b>					
<b>Cash Flows From Investing Activities</b>					
0041 Earnings on Investments - 6500	1,473			1,473	
0042 Purchase of Inv Securities / Deposits to Inv Pools					
0043 Receipts From Investment Pool Withdrawals					
0044 Proceeds from Sale and Maturity of Inv Securities					
0045 Loans Received (Paid)					
<b>Net Cash Prov By (Used for) Investing Activities</b>	<b>\$1,473</b>			<b>\$1,473</b>	

LEA : 129546003     Pine Grove Area SD

Printed 12/5/2017 9:43:56 AM

	Food Service (51)	Child Care Operations (52)	Other Enterprise (58)	TOTAL	Internal Service (60)
Net Increase (Decrease) in Cash Flows	671,961			671,961	
0004 Cash and Cash Equivalents Beginning of Year	344,904			344,904	
Cash and Cash Equivalents at Year End	\$1,016,865			\$1,016,865	
Reconciliation of Operating Income (Loss) To Net Cash Provided by (Used For) Operating Activities					
0005 Operating Income (Loss) per REP	(434,425)			(434,425)	
Adjustments					
0051 Depreciation and Net Amortization	625			625	
0052 Provision for Uncollectible Accounts					
0053 Other Adjustments					
Effect of Changes in Assets, Liabilities, Deferred Outflows and Deferred Inflows					
0054 (Inc) Dec In Accounts Receivable (0120-0150)	(9,314)			(9,314)	
0055 Advances to Other Funds (0160)					
0056 (Inc) Dec in Inventories (0170)	6,081			6,081	
0057 (Inc) Dec in Prepaid Expenses (0180)					
0058 (Inc) Dec in Other Current or Noncurrent Assets					
0064 Deferred Outflows (0910)					
0059 Inc (Dec) in Accounts Payable (0400-0450)	661,056			661,056	
0060 Inc (Dec) in Accrued Salaries/Benefits (0461)	(11,273)			(11,273)	
0065 Inc (Dec) in Net Pension Liabilities (0570)					
0066 Inc (Dec) in Other Postemp Benefit Oblig (0560)					
0061 Inc (Dec) in Payroll Deductions/Withholding (0462)					
0062 Inc (Dec) in Unearned Revenue (0480)	2,454			2,454	
0063 Inc (Dec) in Other Current or Noncurrent Liabilities					
0067 Deferred Inflows (0950)					
Total Adjustments	\$649,629			\$649,629	
Cash Provided By (Used for) Total	\$215,204			\$215,204	

COMBINED STATEMENT OF CASH FLOWS  
SCHEDULE OF NONCASH INVESTING, CAPITAL, AND FINANCING ACTIVITIES

Explanation of Transaction and Balance Sheet Effect	Amount
Total	

LEA : 129546003     Pine Grove Area SD

Printed 12/5/2017 9:43:57 AM

Amounts Expressed in Whole Dollars	<u>Private Purpose Trust</u> <u>(71)</u>	<u>Investment Trust</u> <u>(72)</u>	<u>Pension Trust</u> <u>(73)</u>	<u>Activity</u> <u>(81)</u>
<b>Assets And Deferred Outflows Of Resources</b>				
<b>Assets</b>				
0100 Cash and Cash Equivalents	82,930			85,926
0110 Investments				
0130 Due From Other Funds	625			360
0147 Due from Component Unit				
0150 Other Receivables				
0170 Inventories				
0180 Prepaid Expenses (Expenditures)				
0190 Other Current Assets				
0220 Buildings and Building Improvements (Net)				
0230 Machinery, Equipment and Furniture (Net)				
<b>Total Assets</b>	<b>\$83,555</b>			<b>\$86,286</b>
0910 Deferred Outflows of Resources				
<b>Total Assets And Deferred Outflows Of Resources</b>	<b>\$83,555</b>			<b>\$86,286</b>

LEA : 129546003     Pine Grove Area SD

Printed 12/5/2017 9:43:57 AM

Amounts Expressed in Whole Dollars		<u>Other Agency</u> <u>(89)</u>	<u>Discrete Component Units</u> <u>(98)</u>	<u>Discrete Component Units</u> <u>(99)</u>	<u>Total Fiduciary Funds</u>
<b>Assets And Deferred Outflows Of Resources</b>					
<b>Assets</b>					
0100	Cash and Cash Equivalents				168,856
0110	Investments				
0130	Due From Other Funds				985
0147	Due from Component Unit				
0150	Other Receivables				
0170	Inventories				
0180	Prepaid Expenses (Expenditures)				
0190	Other Current Assets				
0220	Buildings and Building Improvements (Net)				
0230	Machinery, Equipment and Furniture (Net)				
<b>Total Assets</b>					<b>\$169,841</b>
0910	Deferred Outflows of Resources				
<b>Total Assets And Deferred Outflows Of Resources</b>					<b>\$169,841</b>

LEA : 129546003     Pine Grove Area SD

Printed 12/5/2017 9:43:57 AM

Amounts Expressed in Whole Dollars		<u>Private Purpose Trust</u> <u>(71)</u>	<u>Investment Trust</u> <u>(72)</u>	<u>Pension Trust</u> <u>(73)</u>	<u>Activity</u> <u>(81)</u>
<b>Liabilities, Deferred Inflows Of Resources And Net Position</b>					
<b>Liabilities</b>					
0400	Due to Other Funds	2,960			
0411	Due to Other Governments				
0412	Due to Primary Government				
0413	Due to Component Unit				
0420	Accounts Payable				
0430	Contracts Payable				
0450	Short-Term Payables				
0461	Accrued Salaries and Benefits				
0462	Payroll Deductions and Withholding				
0480	Unearned Revenues				
0490	Other Current Liabilities				86,286
<b>Total Liabilities</b>		<b>\$2,960</b>			<b>\$86,286</b>
0950	Deferred Inflows of Resources				
<b>Net Position</b>					
0791	Net Investment in Capital Assets				
0009	Restricted Net Position (0792 – 0798)				
0799	Unrestricted Net Position	80,595			
<b>Total Net Position</b>		<b>\$80,595</b>			
<b>Total Liabilities, Deferred Inflows Of Resources And Net Position</b>		<b>\$83,555</b>			<b>\$86,286</b>

LEA : 129546003     Pine Grove Area SD

Printed 12/5/2017 9:43:57 AM

Amounts Expressed in Whole Dollars

<u>Other Agency</u>	<u>Discrete Component Units</u>	<u>Discrete Component Units</u>	<u>Total Fiduciary Funds</u>
(89)	(98)	(99)	

Liabilities, Deferred Inflows Of Resources And Net Position

Liabilities

0400 Due to Other Funds				2,960
0411 Due to Other Governments				
0412 Due to Primary Government				
0413 Due to Component Unit				
0420 Accounts Payable				
0430 Contracts Payable				
0450 Short-Term Payables				
0461 Accrued Salaries and Benefits				
0462 Payroll Deductions and Withholding				
0480 Unearned Revenues				
0490 Other Current Liabilities				86,286
Total Liabilities				\$89,246

0950 Deferred Inflows of Resources

Net Position

0791 Net Investment in Capital Assets				
0009 Restricted Net Position (0792 – 0798)				
0799 Unrestricted Net Position				80,595
Total Net Position				\$80,595
Total Liabilities, Deferred Inflows Of Resources And Net Position				\$169,841



LEA : 129546003     Pine Grove Area SD

Printed 12/5/2017 9:43:57 AM

Amounts Expressed in Whole Dollars	<u>Private Purpose Trust</u> <u>(71)</u>	<u>Investment Trust</u> <u>(72)</u>	<u>Pension Trust</u> <u>(73)</u>	<u>Discrete Component</u> <u>Units</u> <u>(98)</u>	<u>Discrete Component</u> <u>Units</u> <u>(99)</u>	<u>Total Fiduciary</u> <u>Funds</u>
<b>Additions</b>						
0091 Gifts and Contributions	1,181					1,181
0092 Other Additions	235					235
<b>Deductions</b>						
0093 Scholarships Awarded	2,600					2,600
0094 Other Deductions						
<b>Change In Net Position</b>	<b>(\$1,184)</b>					<b>(\$1,184)</b>
0006 Net Position – Beginning of Fiscal Year	81,779					81,779
0007 Net Position Held in Trust for Pension Benefits						
<b>Net Position - End of Fiscal Year</b>	<b>\$80,595</b>					<b>\$80,595</b>

LEA : 129546003     Pine Grove Area SD

General Fund (10)

Printed 12/5/2017 9:43:58 AM

Page - 1 of 3

	Revenue Reported In Current Year	Current Year Tax Accrual	Prior Year Tax Accrual	Taxes Collected In Current Year
<b>Revenue from Local Sources</b>				
6111 Current Real Estate Taxes	7,753,655.88			7,753,655.88
6113 Public Utility Realty Taxes	11,960.75			11,960.75
6114 Payments in Lieu of Current Taxes - State / Local	20,547.89			20,547.89
6143 Current Act 511 Local Services Taxes	17,131.22			17,131.22
6151 Current Act 511 Earned Income Taxes	1,117,522.02			1,117,522.02
6152 Current Act 511 Occupation Taxes	743,468.00			743,468.00
6153 Current Act 511 Real Estate Transfer Taxes	120,482.70			120,482.70
6411 Delinquent Real Estate Taxes	413,088.18			413,088.18
6420 Delinquent Per Capita Taxes, Section 679	27.24			27.24
6440 Delinquent Local Enabling Taxes - Flat Rate Assessments	27.21			27.21
6452 Delinquent Act 511 Occupation Taxes	73,223.86			73,223.86
6500 Earnings on Investments	25,753.10			
6700 Revenues from LEA Activities	60,842.19			
6831 Federal Revenue Received from Other Pennsylvania Public LEAs	75,807.78			
6832 Federal IDEA Revenue Received as Pass Through	240,126.00			
6910 Rentals	12,476.00			
6920 Contributions and Donations from Private Sources	4,447.96			
6944 Receipts from Other LEAs in Pennsylvania - Education	(20.00)			
6991 Refunds of a Prior Year Expenditure	4,747.16			
6999 Other Revenues Not Specified Above	34,302.75			
<b>TOTAL Revenue from Local Sources</b>	<b>\$10,729,617.89</b>			<b>\$10,271,134.95</b>

	Revenue Reported In Current Year			
<b>Revenue from State Sources</b>				
7110 Basic Education Funding	6,579,509.13			
7160 Tuition for Orphans Subsidy	85,240.53			
7271 Special Education funds for School-Aged Pupils	991,406.94			
7292 Pre-K Counts	42,704.60			
7311 Pupil Transportation Subsidy	707,341.46			
7312 Nonpublic and Charter School Pupil Transportation Subsidy	13,475.00			
7320 Rental and Sinking Fund Payments / Building Reimbursement Subsidy	66,239.04			
7330 Health Services (Medical, Dental, Nurse, Act 25)	29,800.73			
7340 State Property Tax Reduction Allocation	580,362.59			
7505 Ready to Learn Block Grant	257,878.00			
7599 Other State Revenue Not Listed Elsewhere in the 7000 Series	17,000.00			
7810 State Share of Social Security and Medicare Taxes	396,556.77			
7820 State Share of Retirement Contributions	1,410,388.47			
<b>TOTAL Revenue from State Sources</b>	<b>\$11,177,903.26</b>			

Revenue Reported In Current Year				
Revenue from Federal Sources				
8390 Other Restricted Federal Grants-in-Aid Directly from the Federal Government	64,182.57			
8514 NCLB, Title I - Improving the Academic Achievement of the Disadvantaged	280,166.00			
8515 NCLB, Title II - Preparing, Training and Recruiting High Quality Teachers and Principals	68,386.98			
8820 Medical Assistance Reimbursement for Administrative Claiming (Quarterly) Program	3,043.50			
TOTAL Revenue from Federal Sources	\$415,779.05			
TOTAL FROM ALL SOURCES	\$22,323,300.20			\$10,271,134.95

Revenue from Local Sources	10,729,617.89
Revenue from State Sources	11,177,903.26
Revenue from Federal Sources	415,779.05
Other Financing Sources	
<b>TOTAL FROM ALL SOURCES</b>	<b>\$22,323,300.20</b>

LEA : 129546003     Pine Grove Area SD

Printed 12/5/2017 9:44:00 AM

<b>General Fund (10)</b>	
<b>1000 Instruction</b>	<b><u>Total</u></b>
<b>100 <u>Personnel Services – Salaries</u></b>	
100 Personnel Services – Salaries	6,935,277.42
<b>Total Personnel Services – Salaries</b>	<b>\$6,935,277.42</b>
<b>200 <u>Personnel Services – Employee Benefits</u></b>	
210 Group Insurance – Contracted Provider	1,584,027.14
220 Social Security Contributions	491,000.19
230 PSERS Retirement Contributions	1,665,447.67
240 Tuition Reimbursement	36,412.31
250 Unemployment Compensation	(3,173.92)
260 Workers' Compensation	7,154.23
<b>Total Personnel Services – Employee Benefits</b>	<b>\$3,780,867.62</b>
<b>300 <u>Purchased Professional and Technical Services</u></b>	
310 Official / Administrative Services	231,949.50
322 Professional Educational Services – Ius	379,313.46
323 Professional Educational Services – Other Educational Agencies	1,158.75
<b>Total Purchased Professional and Technical Services</b>	<b>\$612,421.71</b>
<b>400 <u>Purchased Property Services</u></b>	
430 Repairs and Maintenance Services	3,625.98
440 Rentals	13,622.86
<b>Total Purchased Property Services</b>	<b>\$17,248.84</b>
<b>500 <u>Other Purchased Services</u></b>	
510 Student Transportation Services	23,607.79
530 Communications	500.00
561 Tuition To Other School Districts Within the State	146,423.04
562 Tuition To Pennsylvania Charter Schools	344,898.92
564 Tuition To Career and Technology Centers	503,098.00
568 Tuition To Private Residential Rehabilitative Institutions (PRRI) [In-State] and Detention Centers	17,908.83
580 Travel	6,400.69
591 Services Purchased Locally	390.00
597 Direct Payments To Intermediate Units for Institutionalized Childrens' Program	59,740.00
<b>Total Other Purchased Services</b>	<b>\$1,102,967.27</b>
<b>600 <u>Supplies</u></b>	
610 General Supplies	253,443.69
630 Food	10,162.09
640 Books and Periodicals	22,165.87
650 Supplies & Fees – Technology Related	154.50
<b>Total Supplies</b>	<b>\$285,926.15</b>
<b>700 <u>Property</u></b>	
750 Equipment – Original and Additional	24,202.93
760 Equipment – Replacement	100,369.50
<b>Total Property</b>	<b>\$124,572.43</b>

LEA : 129546003     Pine Grove Area SD

Printed 12/5/2017 9:44:00 AM

General Fund (10)	
1000 Instruction	<u>Total</u>
800 <u>Other Objects</u>	
810 Dues and Fees	1,169.62
890 Miscellaneous Expenditures	522.00
Total Other Objects	\$1,691.62
Total 1000 Instruction	\$12,860,973.06

LEA : 129546003     Pine Grove Area SD

Printed 12/5/2017 9:44:00 AM

<b>General Fund (10)</b>				
<b>1100 Regular Programs – Elementary / Secondary</b>	<u><b>Elementary</b></u>	<u><b>Secondary</b></u>	<u><b>Federal</b></u>	<u><b>Total</b></u>
<b>100 <u>Personnel Services – Salaries</u></b>				
100 Personnel Services – Salaries	2,665,761.19	2,410,296.04	280,166.00	5,356,223.23
<b>Total Personnel Services – Salaries</b>	<b>\$2,665,761.19</b>	<b>\$2,410,296.04</b>	<b>\$280,166.00</b>	<b>\$5,356,223.23</b>
<b>200 <u>Personnel Services – Employee Benefits</u></b>				
210 Group Insurance – Contracted Provider	621,261.40	716,533.12		1,337,794.52
220 Social Security Contributions	217,669.87	173,852.70		391,522.57
230 PSERS Retirement Contributions	721,729.15	598,388.07		1,320,117.22
240 Tuition Reimbursement	8,385.10	26,076.71		34,461.81
250 Unemployment Compensation	(6,275.04)	1,607.16		(4,667.88)
260 Workers' Compensation	(23,053.75)	18,922.19		(4,131.56)
<b>Total Personnel Services – Employee Benefits</b>	<b>\$1,539,716.73</b>	<b>\$1,535,379.95</b>		<b>\$3,075,096.68</b>
<b>300 <u>Purchased Professional and Technical Services</u></b>				
310 Official / Administrative Services	115,974.75	115,974.75		231,949.50
322 Professional Educational Services – lus	5,676.25	5,676.25		11,352.50
<b>Total Purchased Professional and Technical Services</b>	<b>\$121,651.00</b>	<b>\$121,651.00</b>		<b>\$243,302.00</b>
<b>400 <u>Purchased Property Services</u></b>				
430 Repairs and Maintenance Services	1,069.00	2,556.98		3,625.98
440 Rentals	4,535.36	8,313.24		12,848.60
<b>Total Purchased Property Services</b>	<b>\$5,604.36</b>	<b>\$10,870.22</b>		<b>\$16,474.58</b>
<b>500 <u>Other Purchased Services</u></b>				
510 Student Transportation Services	80.00	5,986.41		6,066.41
530 Communications	500.00			500.00
561 Tuition To Other School Districts Within the State	359.15	359.15		718.30
562 Tuition To Pennsylvania Charter Schools	148,985.76	148,985.76		297,971.52
580 Travel	765.01	4,271.65		5,036.66
<b>Total Other Purchased Services</b>	<b>\$150,689.92</b>	<b>\$159,602.97</b>		<b>\$310,292.89</b>
<b>600 <u>Supplies</u></b>				
610 General Supplies	128,457.75	107,526.77		235,984.52
640 Books and Periodicals	2,765.10	15,666.59		18,431.69
<b>Total Supplies</b>	<b>\$131,222.85</b>	<b>\$123,193.36</b>		<b>\$254,416.21</b>
<b>700 <u>Property</u></b>				
750 Equipment – Original and Additional	2,157.34	22,045.59		24,202.93
760 Equipment – Replacement	5,370.00	94,999.50		100,369.50
<b>Total Property</b>	<b>\$7,527.34</b>	<b>\$117,045.09</b>		<b>\$124,572.43</b>
<b>800 <u>Other Objects</u></b>				
810 Dues and Fees	511.62	408.00		919.62
<b>Total Other Objects</b>	<b>\$511.62</b>	<b>\$408.00</b>		<b>\$919.62</b>
<b>Total 1100 Regular Programs – Elementary / Secondary</b>	<b>\$4,622,685.01</b>	<b>\$4,478,446.63</b>	<b>\$280,166.00</b>	<b>\$9,381,297.64</b>



LEA : 129546003     Pine Grove Area SD

Printed 12/5/2017 9:44:00 AM

General Fund (10)

1110 Regular Programs	Elementary	Secondary	Federal	Total
<b>100 <u>Personnel Services – Salaries</u></b>				
100 Personnel Services – Salaries	2,665,761.19	2,410,296.04		5,076,057.23
<b>Total Personnel Services – Salaries</b>	<b>\$2,665,761.19</b>	<b>\$2,410,296.04</b>		<b>\$5,076,057.23</b>
<b>200 <u>Personnel Services – Employee Benefits</u></b>				
210 Group Insurance – Contracted Provider	621,261.40	716,533.12		1,337,794.52
220 Social Security Contributions	217,669.87	173,852.70		391,522.57
230 PSERS Retirement Contributions	721,729.15	598,388.07		1,320,117.22
240 Tuition Reimbursement	8,385.10	26,076.71		34,461.81
250 Unemployment Compensation	(6,275.04)	1,607.16		(4,667.88)
260 Workers' Compensation	(23,053.75)	18,922.19		(4,131.56)
<b>Total Personnel Services – Employee Benefits</b>	<b>\$1,539,716.73</b>	<b>\$1,535,379.95</b>		<b>\$3,075,096.68</b>
<b>300 <u>Purchased Professional and Technical Services</u></b>				
310 Official / Administrative Services	115,974.75	115,974.75		231,949.50
322 Professional Educational Services – lus	5,676.25	5,676.25		11,352.50
<b>Total Purchased Professional and Technical Services</b>	<b>\$121,651.00</b>	<b>\$121,651.00</b>		<b>\$243,302.00</b>
<b>400 <u>Purchased Property Services</u></b>				
430 Repairs and Maintenance Services	1,069.00	2,556.98		3,625.98
440 Rentals	4,535.36	8,313.24		12,848.60
<b>Total Purchased Property Services</b>	<b>\$5,604.36</b>	<b>\$10,870.22</b>		<b>\$16,474.58</b>
<b>500 <u>Other Purchased Services</u></b>				
510 Student Transportation Services	80.00	5,986.41		6,066.41
530 Communications	500.00			500.00
561 Tuition To Other School Districts Within the State	359.15	359.15		718.30
562 Tuition To Pennsylvania Charter Schools	148,985.76	148,985.76		297,971.52
580 Travel	765.01	4,271.65		5,036.66
<b>Total Other Purchased Services</b>	<b>\$150,689.92</b>	<b>\$159,602.97</b>		<b>\$310,292.89</b>
<b>600 <u>Supplies</u></b>				
610 General Supplies	128,457.75	107,526.77		235,984.52
640 Books and Periodicals	2,765.10	15,666.59		18,431.69
<b>Total Supplies</b>	<b>\$131,222.85</b>	<b>\$123,193.36</b>		<b>\$254,416.21</b>
<b>700 <u>Property</u></b>				
750 Equipment – Original and Additional	2,157.34	22,045.59		24,202.93
760 Equipment – Replacement	5,370.00	94,999.50		100,369.50
<b>Total Property</b>	<b>\$7,527.34</b>	<b>\$117,045.09</b>		<b>\$124,572.43</b>
<b>800 <u>Other Objects</u></b>				
810 Dues and Fees	511.62	408.00		919.62
<b>Total Other Objects</b>	<b>\$511.62</b>	<b>\$408.00</b>		<b>\$919.62</b>
<b>Total 1110 Regular Programs</b>	<b>\$4,622,685.01</b>	<b>\$4,478,446.63</b>		<b>\$9,101,131.64</b>

LEA : 129546003     Pine Grove Area SD

Printed 12/5/2017 9:44:00 AM

General Fund (10)

1190 Federally-Funded Regular Programs	<u>Elementary</u>	<u>Secondary</u>	<u>Federal</u>	<u>Total</u>
100 <u>Personnel Services – Salaries</u>				
100 Personnel Services – Salaries			280,166.00	280,166.00
Total Personnel Services – Salaries			\$280,166.00	\$280,166.00
Total 1190 Federally-Funded Regular Programs			\$280,166.00	\$280,166.00

LEA : 129546003     Pine Grove Area SD

Printed 12/5/2017 9:44:00 AM

General Fund (10)				
1200 Special Programs – Elementary / Secondary	Elementary	Secondary	Federal	Total
100 <u>Personnel Services – Salaries</u>				
100 Personnel Services – Salaries	868,650.30	589,003.45	83,597.44	1,541,251.19
<b>Total Personnel Services – Salaries</b>	<b>\$868,650.30</b>	<b>\$589,003.45</b>	<b>\$83,597.44</b>	<b>\$1,541,251.19</b>
200 <u>Personnel Services – Employee Benefits</u>				
210 Group Insurance – Contracted Provider	127,437.23	97,843.75	20,951.64	246,232.62
220 Social Security Contributions	52,960.35	36,726.58	6,198.82	95,885.75
230 PSERS Retirement Contributions	184,136.16	127,461.33	21,601.56	333,199.05
240 Tuition Reimbursement	1,300.50	650.00		1,950.50
250 Unemployment Compensation	829.37	600.64	35.32	1,465.33
260 Workers' Compensation	6,015.78	4,173.49	702.04	10,891.31
<b>Total Personnel Services – Employee Benefits</b>	<b>\$372,679.39</b>	<b>\$267,455.79</b>	<b>\$49,489.38</b>	<b>\$689,624.56</b>
300 <u>Purchased Professional and Technical Services</u>				
322 Professional Educational Services – Ius	77,747.76	77,747.73	138,108.22	293,603.71
<b>Total Purchased Professional and Technical Services</b>	<b>\$77,747.76</b>	<b>\$77,747.73</b>	<b>\$138,108.22</b>	<b>\$293,603.71</b>
400 <u>Purchased Property Services</u>				
440 Rentals	387.13	387.13		774.26
<b>Total Purchased Property Services</b>	<b>\$387.13</b>	<b>\$387.13</b>		<b>\$774.26</b>
500 <u>Other Purchased Services</u>				
510 Student Transportation Services	811.33	811.33		1,622.66
561 Tuition To Other School Districts Within the State	71,858.87	71,858.85		143,717.72
562 Tuition To Pennsylvania Charter Schools	23,463.70	23,463.70		46,927.40
580 Travel	123.72	178.91		302.63
597 Direct Payments To Intermediate Units for Institutionalized Childrens' Program	29,870.00	29,870.00		59,740.00
<b>Total Other Purchased Services</b>	<b>\$126,127.62</b>	<b>\$126,182.79</b>		<b>\$252,310.41</b>
600 <u>Supplies</u>				
610 General Supplies	4,137.53	5,616.36		9,753.89
630 Food	52.68	429.45		482.13
640 Books and Periodicals	1,978.03	1,756.15		3,734.18
650 Supplies & Fees – Technology Related	154.50			154.50
<b>Total Supplies</b>	<b>\$6,322.74</b>	<b>\$7,801.96</b>		<b>\$14,124.70</b>
800 <u>Other Objects</u>				
810 Dues and Fees	250.00			250.00
890 Miscellaneous Expenditures	261.00	261.00		522.00
<b>Total Other Objects</b>	<b>\$511.00</b>	<b>\$261.00</b>		<b>\$772.00</b>
<b>Total 1200 Special Programs – Elementary / Secondary</b>	<b>\$1,452,425.94</b>	<b>\$1,068,839.85</b>	<b>\$271,195.04</b>	<b>\$2,792,460.83</b>

LEA : 129546003     Pine Grove Area SD

Printed 12/5/2017 9:44:00 AM

<b>General Fund (10)</b>				
<b>1210 Life Skills Support</b>	<b><u>Elementary</u></b>	<b><u>Secondary</u></b>	<b><u>Federal</u></b>	<b><u>Total</u></b>
<b>100 <u>Personnel Services – Salaries</u></b>				
100 Personnel Services – Salaries	97,540.25	47,964.32		145,504.57
<b>Total Personnel Services – Salaries</b>	<b>\$97,540.25</b>	<b>\$47,964.32</b>		<b>\$145,504.57</b>
<b>200 <u>Personnel Services – Employee Benefits</u></b>				
210 Group Insurance – Contracted Provider	24,849.27	9,944.46		34,793.73
220 Social Security Contributions	5,159.16	1,776.91		6,936.07
230 PSERS Retirement Contributions	19,453.11	6,321.40		25,774.51
250 Unemployment Compensation	45.14	17.13		62.27
260 Workers' Compensation	632.31	205.51		837.82
<b>Total Personnel Services – Employee Benefits</b>	<b>\$50,138.99</b>	<b>\$18,265.41</b>		<b>\$68,404.40</b>
<b>300 <u>Purchased Professional and Technical Services</u></b>				
322 Professional Educational Services – lus			75,166.70	75,166.70
<b>Total Purchased Professional and Technical Services</b>			<b>\$75,166.70</b>	<b>\$75,166.70</b>
<b>600 <u>Supplies</u></b>				
610 General Supplies	427.95	691.60		1,119.55
630 Food	31.53	429.45		460.98
640 Books and Periodicals	550.81	1,109.54		1,660.35
<b>Total Supplies</b>	<b>\$1,010.29</b>	<b>\$2,230.59</b>		<b>\$3,240.88</b>
<b>Total 1210 Life Skills Support</b>	<b>\$148,689.53</b>	<b>\$68,460.32</b>	<b>\$75,166.70</b>	<b>\$292,316.55</b>

LEA : 129546003     Pine Grove Area SD

Printed 12/5/2017 9:44:00 AM

General Fund (10)				
1220 Sensory Support	<u>Elementary</u>	<u>Secondary</u>	<u>Federal</u>	<u>Total</u>
100 <u>Personnel Services – Salaries</u>				
100 Personnel Services – Salaries	169,680.98			169,680.98
<b>Total Personnel Services – Salaries</b>	<b>\$169,680.98</b>			<b>\$169,680.98</b>
200 <u>Personnel Services – Employee Benefits</u>				
210 Group Insurance – Contracted Provider	30,059.43			30,059.43
220 Social Security Contributions	12,711.90			12,711.90
230 PSERS Retirement Contributions	43,845.56			43,845.56
250 Unemployment Compensation	88.35			88.35
260 Workers' Compensation	1,425.31			1,425.31
<b>Total Personnel Services – Employee Benefits</b>	<b>\$88,130.55</b>			<b>\$88,130.55</b>
300 <u>Purchased Professional and Technical Services</u>				
322 Professional Educational Services – lus	57,643.43	57,643.42		115,286.85
<b>Total Purchased Professional and Technical Services</b>	<b>\$57,643.43</b>	<b>\$57,643.42</b>		<b>\$115,286.85</b>
500 <u>Other Purchased Services</u>				
561 Tuition To Other School Districts Within the State	25,493.28	25,493.27		50,986.55
<b>Total Other Purchased Services</b>	<b>\$25,493.28</b>	<b>\$25,493.27</b>		<b>\$50,986.55</b>
600 <u>Supplies</u>				
610 General Supplies	1,294.78			1,294.78
640 Books and Periodicals	166.73			166.73
<b>Total Supplies</b>	<b>\$1,461.51</b>			<b>\$1,461.51</b>
800 <u>Other Objects</u>				
810 Dues and Fees	250.00			250.00
<b>Total Other Objects</b>	<b>\$250.00</b>			<b>\$250.00</b>
<b>Total 1220 Sensory Support</b>	<b>\$342,659.75</b>	<b>\$83,136.69</b>		<b>\$425,796.44</b>

LEA : 129546003     Pine Grove Area SD

Printed 12/5/2017 9:44:00 AM

<b>General Fund (10)</b>				
<b>1230 Emotional Support</b>	<b><u>Elementary</u></b>	<b><u>Secondary</u></b>	<b><u>Federal</u></b>	<b><u>Total</u></b>
<b>100 <u>Personnel Services – Salaries</u></b>				
100 Personnel Services – Salaries	101,655.05	98,284.95		199,940.00
<b>Total Personnel Services – Salaries</b>	<b>\$101,655.05</b>	<b>\$98,284.95</b>		<b>\$199,940.00</b>
<b>200 <u>Personnel Services – Employee Benefits</u></b>				
210 Group Insurance – Contracted Provider	24,850.59	12,517.49		37,368.08
220 Social Security Contributions	3,232.08	3,329.88		6,561.96
230 PSERS Retirement Contributions	12,299.81	11,637.67		23,937.48
250 Unemployment Compensation	44.84	45.12		89.96
260 Workers' Compensation	399.77	378.26		778.03
<b>Total Personnel Services – Employee Benefits</b>	<b>\$40,827.09</b>	<b>\$27,908.42</b>		<b>\$68,735.51</b>
<b>300 <u>Purchased Professional and Technical Services</u></b>				
322 Professional Educational Services – lus	18,308.94	18,308.93		36,617.87
<b>Total Purchased Professional and Technical Services</b>	<b>\$18,308.94</b>	<b>\$18,308.93</b>		<b>\$36,617.87</b>
<b>500 <u>Other Purchased Services</u></b>				
561 Tuition To Other School Districts Within the State	11,457.78	11,457.78		22,915.56
580 Travel	71.00	71.00		142.00
<b>Total Other Purchased Services</b>	<b>\$11,528.78</b>	<b>\$11,528.78</b>		<b>\$23,057.56</b>
<b>600 <u>Supplies</u></b>				
610 General Supplies	780.72	203.49		984.21
640 Books and Periodicals	37.98	137.97		175.95
650 Supplies & Fees – Technology Related	154.50			154.50
<b>Total Supplies</b>	<b>\$973.20</b>	<b>\$341.46</b>		<b>\$1,314.66</b>
<b>Total 1230 Emotional Support</b>	<b>\$173,293.06</b>	<b>\$156,372.54</b>		<b>\$329,665.60</b>

LEA : 129546003     Pine Grove Area SD

Printed 12/5/2017 9:44:00 AM

General Fund (10)

1240 Academic Support

	Elementary	Secondary	Federal	Total
<b>100 <u>Personnel Services – Salaries</u></b>				
100 Personnel Services – Salaries	440,356.02	442,754.18	83,597.44	966,707.64
<b>Total Personnel Services – Salaries</b>	<b>\$440,356.02</b>	<b>\$442,754.18</b>	<b>\$83,597.44</b>	<b>\$966,707.64</b>
<b>200 <u>Personnel Services – Employee Benefits</u></b>				
210 Group Insurance – Contracted Provider	27,765.98	75,381.80	20,951.64	124,099.42
220 Social Security Contributions	27,500.25	31,619.79	6,198.82	65,318.86
230 PSERS Retirement Contributions	93,184.16	109,502.26	21,601.56	224,287.98
240 Tuition Reimbursement	1,300.50	650.00		1,950.50
250 Unemployment Compensation	621.61	538.39	35.32	1,195.32
260 Workers' Compensation	3,059.20	3,589.72	702.04	7,350.96
<b>Total Personnel Services – Employee Benefits</b>	<b>\$153,431.70</b>	<b>\$221,281.96</b>	<b>\$49,489.38</b>	<b>\$424,203.04</b>
<b>400 <u>Purchased Property Services</u></b>				
440 Rentals	387.13	387.13		774.26
<b>Total Purchased Property Services</b>	<b>\$387.13</b>	<b>\$387.13</b>		<b>\$774.26</b>
<b>500 <u>Other Purchased Services</u></b>				
510 Student Transportation Services	811.33	811.33		1,622.66
561 Tuition To Other School Districts Within the State	34,907.81	34,907.80		69,815.61
562 Tuition To Pennsylvania Charter Schools	23,463.70	23,463.70		46,927.40
580 Travel	52.72	107.91		160.63
<b>Total Other Purchased Services</b>	<b>\$59,235.56</b>	<b>\$59,290.74</b>		<b>\$118,526.30</b>
<b>600 <u>Supplies</u></b>				
610 General Supplies	1,197.17	3,921.32		5,118.49
630 Food	21.15			21.15
640 Books and Periodicals	1,222.51	508.64		1,731.15
<b>Total Supplies</b>	<b>\$2,440.83</b>	<b>\$4,429.96</b>		<b>\$6,870.79</b>
<b>800 <u>Other Objects</u></b>				
890 Miscellaneous Expenditures	261.00	261.00		522.00
<b>Total Other Objects</b>	<b>\$261.00</b>	<b>\$261.00</b>		<b>\$522.00</b>
<b>Total 1240 Academic Support</b>	<b>\$656,112.24</b>	<b>\$728,404.97</b>	<b>\$133,086.82</b>	<b>\$1,517,604.03</b>

LEA : 129546003     Pine Grove Area SD

Printed 12/5/2017 9:44:00 AM

General Fund (10)

1241 Learning Support – Public	Elementary	Secondary	Federal	Total
100 <u>Personnel Services – Salaries</u>				
100 Personnel Services – Salaries	417,081.52	419,479.68	83,597.44	920,158.64
<b>Total Personnel Services – Salaries</b>	<b>\$417,081.52</b>	<b>\$419,479.68</b>	<b>\$83,597.44</b>	<b>\$920,158.64</b>
200 <u>Personnel Services – Employee Benefits</u>				
210 Group Insurance – Contracted Provider	23,986.98	71,602.81	20,951.64	116,541.43
220 Social Security Contributions	25,752.27	29,871.81	6,198.82	61,822.90
230 PSERS Retirement Contributions	87,169.99	103,488.09	21,601.56	212,259.64
240 Tuition Reimbursement	1,300.50	650.00		1,950.50
250 Unemployment Compensation	606.88	523.67	35.32	1,165.87
260 Workers' Compensation	2,863.68	3,394.21	702.04	6,959.93
<b>Total Personnel Services – Employee Benefits</b>	<b>\$141,680.30</b>	<b>\$209,530.59</b>	<b>\$49,489.38</b>	<b>\$400,700.27</b>
400 <u>Purchased Property Services</u>				
440 Rentals	387.13	387.13		774.26
<b>Total Purchased Property Services</b>	<b>\$387.13</b>	<b>\$387.13</b>		<b>\$774.26</b>
500 <u>Other Purchased Services</u>				
561 Tuition To Other School Districts Within the State	34,907.81	34,907.80		69,815.61
562 Tuition To Pennsylvania Charter Schools	23,463.70	23,463.70		46,927.40
580 Travel		55.20		55.20
<b>Total Other Purchased Services</b>	<b>\$58,371.51</b>	<b>\$58,426.70</b>		<b>\$116,798.21</b>
600 <u>Supplies</u>				
610 General Supplies	900.43	1,884.57		2,785.00
630 Food	21.15			21.15
640 Books and Periodicals	1,189.61	402.44		1,592.05
<b>Total Supplies</b>	<b>\$2,111.19</b>	<b>\$2,287.01</b>		<b>\$4,398.20</b>
<b>Total 1241 Learning Support – Public</b>	<b>\$619,631.65</b>	<b>\$690,111.11</b>	<b>\$133,086.82</b>	<b>\$1,442,829.58</b>



LEA : 129546003     Pine Grove Area SD

Printed 12/5/2017 9:44:00 AM

<b>General Fund (10)</b>				
<b>1243 Gifted Support</b>	<u>Elementary</u>	<u>Secondary</u>	<u>Federal</u>	<u>Total</u>
<b>100 <u>Personnel Services – Salaries</u></b>				
100 Personnel Services – Salaries	23,274.50	23,274.50		46,549.00
<b>Total Personnel Services – Salaries</b>	<b>\$23,274.50</b>	<b>\$23,274.50</b>		<b>\$46,549.00</b>
<b>200 <u>Personnel Services – Employee Benefits</u></b>				
210 Group Insurance – Contracted Provider	3,779.00	3,778.99		7,557.99
220 Social Security Contributions	1,747.98	1,747.98		3,495.96
230 PSERS Retirement Contributions	6,014.17	6,014.17		12,028.34
250 Unemployment Compensation	14.73	14.72		29.45
260 Workers' Compensation	195.52	195.51		391.03
<b>Total Personnel Services – Employee Benefits</b>	<b>\$11,751.40</b>	<b>\$11,751.37</b>		<b>\$23,502.77</b>
<b>500 <u>Other Purchased Services</u></b>				
510 Student Transportation Services	811.33	811.33		1,622.66
580 Travel	52.72	52.71		105.43
<b>Total Other Purchased Services</b>	<b>\$864.05</b>	<b>\$864.04</b>		<b>\$1,728.09</b>
<b>600 <u>Supplies</u></b>				
610 General Supplies	296.74	2,036.75		2,333.49
640 Books and Periodicals	32.90	106.20		139.10
<b>Total Supplies</b>	<b>\$329.64</b>	<b>\$2,142.95</b>		<b>\$2,472.59</b>
<b>800 <u>Other Objects</u></b>				
890 Miscellaneous Expenditures	261.00	261.00		522.00
<b>Total Other Objects</b>	<b>\$261.00</b>	<b>\$261.00</b>		<b>\$522.00</b>
<b>Total 1243 Gifted Support</b>	<b>\$36,480.59</b>	<b>\$38,293.86</b>		<b>\$74,774.45</b>

LEA : 129546003     Pine Grove Area SD

Printed 12/5/2017 9:44:00 AM

<b>General Fund (10)</b>				
<b>1260 Physical Support</b>	<b><u>Elementary</u></b>	<b><u>Secondary</u></b>	<b><u>Federal</u></b>	<b><u>Total</u></b>
<b>100 <u>Personnel Services – Salaries</u></b>				
100 Personnel Services – Salaries	59,418.00			59,418.00
<b>Total Personnel Services – Salaries</b>	<b>\$59,418.00</b>			<b>\$59,418.00</b>
<b>200 <u>Personnel Services – Employee Benefits</u></b>				
210 Group Insurance – Contracted Provider	19,911.96			19,911.96
220 Social Security Contributions	4,356.96			4,356.96
230 PSERS Retirement Contributions	15,353.52			15,353.52
250 Unemployment Compensation	29.43			29.43
260 Workers' Compensation	499.19			499.19
<b>Total Personnel Services – Employee Benefits</b>	<b>\$40,151.06</b>			<b>\$40,151.06</b>
<b>300 <u>Purchased Professional and Technical Services</u></b>				
322 Professional Educational Services – lus			20,170.66	20,170.66
<b>Total Purchased Professional and Technical Services</b>			<b>\$20,170.66</b>	<b>\$20,170.66</b>
<b>600 <u>Supplies</u></b>				
610 General Supplies	167.52	99.08		266.60
<b>Total Supplies</b>	<b>\$167.52</b>	<b>\$99.08</b>		<b>\$266.60</b>
<b>Total 1260 Physical Support</b>	<b>\$99,736.58</b>	<b>\$99.08</b>	<b>\$20,170.66</b>	<b>\$120,006.32</b>

LEA : 129546003     Pine Grove Area SD

Printed 12/5/2017 9:44:00 AM

General Fund (10)

1270 Multi-Handicapped Support

	<u>Elementary</u>	<u>Secondary</u>	<u>Federal</u>	<u>Total</u>
300 <u>Purchased Professional and Technical Services</u>				
322 Professional Educational Services – lus			35,273.53	35,273.53
<b>Total Purchased Professional and Technical Services</b>			<b>\$35,273.53</b>	<b>\$35,273.53</b>
<b>Total 1270 Multi-Handicapped Support</b>			<b>\$35,273.53</b>	<b>\$35,273.53</b>

LEA : 129546003 Pine Grove Area SD

Printed 12/5/2017 9:44:00 AM

General Fund (10)

1280 Early Intervention Support

<u>Elementary</u>	<u>Secondary</u>	<u>Federal</u>	<u>Total</u>
-------------------	------------------	----------------	--------------

300 Purchased Professional and Technical Services

322 Professional Educational Services – lus		7,497.33	7,497.33
---	--	----------	----------

<b>Total Purchased Professional and Technical Services</b>		<b>\$7,497.33</b>	<b>\$7,497.33</b>
--	--	-------------------	-------------------

<b>Total 1280 Early Intervention Support</b>		<b>\$7,497.33</b>	<b>\$7,497.33</b>
--	--	-------------------	-------------------

LEA : 129546003 Pine Grove Area SD

Printed 12/5/2017 9:44:00 AM

General Fund (10)

1290 Special Programs - Other Support	<u>Elementary</u>	<u>Secondary</u>	<u>Federal</u>	<u>Total</u>
300 <u>Purchased Professional and Technical Services</u>				
322 Professional Educational Services – lus	1,795.39	1,795.38		3,590.77
Total Purchased Professional and Technical Services	\$1,795.39	\$1,795.38		\$3,590.77
500 <u>Other Purchased Services</u>				
597 Direct Payments To Intermediate Units for Institutionalized Childrens' Program	29,870.00	29,870.00		59,740.00
Total Other Purchased Services	\$29,870.00	\$29,870.00		\$59,740.00
600 <u>Supplies</u>				
610 General Supplies	269.39	700.87		970.26
Total Supplies	\$269.39	\$700.87		\$970.26
Total 1290 Special Programs - Other Support	\$31,934.78	\$32,366.25		\$64,301.03

LEA : 129546003     Pine Grove Area SD

Printed 12/5/2017 9:44:00 AM

General Fund (10)

1300 Vocational Education

	<u>Elementary</u>	<u>Secondary</u>	<u>Federal</u>	<u>Total</u>
500 <u>Other Purchased Services</u>				
564 Tuition To Career and Technology Centers		503,098.00		503,098.00
<b>Total Other Purchased Services</b>		<b>\$503,098.00</b>		<b>\$503,098.00</b>
<b>Total 1300 Vocational Education</b>		<b>\$503,098.00</b>		<b>\$503,098.00</b>

LEA : 129546003     Pine Grove Area SD

Printed 12/5/2017 9:44:00 AM

General Fund (10)				
1400 Other Instructional Programs – Elementary / Secondary	<u>Elementary</u>	<u>Secondary</u>	<u>Federal</u>	<u>Total</u>
100 <u>Personnel Services – Salaries</u>				
100 Personnel Services – Salaries	(638.75)	10,718.75	27,723.00	37,803.00
<b>Total Personnel Services – Salaries</b>	<b>(\$638.75)</b>	<b>\$10,718.75</b>	<b>\$27,723.00</b>	<b>\$37,803.00</b>
200 <u>Personnel Services – Employee Benefits</u>				
220 Social Security Contributions	440.38	1,045.80	2,105.69	3,591.87
230 PSERS Retirement Contributions	1,487.42	3,532.01	7,111.97	12,131.40
250 Unemployment Compensation	0.24	10.66	17.73	28.63
260 Workers' Compensation	48.37	114.83	231.28	394.48
<b>Total Personnel Services – Employee Benefits</b>	<b>\$1,976.41</b>	<b>\$4,703.30</b>	<b>\$9,466.67</b>	<b>\$16,146.38</b>
300 <u>Purchased Professional and Technical Services</u>				
322 Professional Educational Services – Ius	36,433.13	36,433.12		72,866.25
323 Professional Educational Services – Other Educational Agencies	218.75	940.00		1,158.75
<b>Total Purchased Professional and Technical Services</b>	<b>\$36,651.88</b>	<b>\$37,373.12</b>		<b>\$74,025.00</b>
500 <u>Other Purchased Services</u>				
510 Student Transportation Services			15,918.72	15,918.72
561 Tuition To Other School Districts Within the State	993.51	993.51		1,987.02
568 Tuition To Private Residential Rehabilitative Institutions (PRRI) [In-State] and Detention Centers	8,954.42	8,954.41		17,908.83
580 Travel		260.72	800.68	1,061.40
591 Services Purchased Locally			390.00	390.00
<b>Total Other Purchased Services</b>	<b>\$9,947.93</b>	<b>\$10,208.64</b>	<b>\$17,109.40</b>	<b>\$37,265.97</b>
600 <u>Supplies</u>				
610 General Supplies	3,428.62	3,428.62	848.04	7,705.28
630 Food	851.96	851.96	7,976.04	9,679.96
<b>Total Supplies</b>	<b>\$4,280.58</b>	<b>\$4,280.58</b>	<b>\$8,824.08</b>	<b>\$17,385.24</b>
<b>Total 1400 Other Instructional Programs – Elementary / Secondary</b>	<b>\$52,218.05</b>	<b>\$67,284.39</b>	<b>\$63,123.15</b>	<b>\$182,625.59</b>

LEA : 129546003     Pine Grove Area SD

Printed 12/5/2017 9:44:00 AM

General Fund (10)

1430 Homebound Instruction	Elementary	Secondary	Federal	Total
100 <u>Personnel Services – Salaries</u>				
100 Personnel Services – Salaries	537.50	137.50		675.00
<b>Total Personnel Services – Salaries</b>	<b>\$537.50</b>	<b>\$137.50</b>		<b>\$675.00</b>
200 <u>Personnel Services – Employee Benefits</u>				
220 Social Security Contributions	41.13	41.13		82.26
230 PSERS Retirement Contributions	138.89	138.89		277.78
250 Unemployment Compensation	0.24	0.24		0.48
260 Workers' Compensation	4.52	4.52		9.04
<b>Total Personnel Services – Employee Benefits</b>	<b>\$184.78</b>	<b>\$184.78</b>		<b>\$369.56</b>
300 <u>Purchased Professional and Technical Services</u>				
323 Professional Educational Services – Other Educational Agencies	218.75	940.00		1,158.75
<b>Total Purchased Professional and Technical Services</b>	<b>\$218.75</b>	<b>\$940.00</b>		<b>\$1,158.75</b>
500 <u>Other Purchased Services</u>				
580 Travel		260.72		260.72
<b>Total Other Purchased Services</b>		<b>\$260.72</b>		<b>\$260.72</b>
<b>Total 1430 Homebound Instruction</b>	<b>\$941.03</b>	<b>\$1,523.00</b>		<b>\$2,464.03</b>



LEA : 129546003     Pine Grove Area SD

Printed 12/5/2017 9:44:00 AM

General Fund (10)				
1440 Alternative Regular Education Programs	<u>Elementary</u>	<u>Secondary</u>	<u>Federal</u>	<u>Total</u>
300 <u>Purchased Professional and Technical Services</u>				
322 Professional Educational Services – lus	36,433.13	36,433.12		72,866.25
<b>Total Purchased Professional and Technical Services</b>	<b>\$36,433.13</b>	<b>\$36,433.12</b>		<b>\$72,866.25</b>
500 <u>Other Purchased Services</u>				
561 Tuition To Other School Districts Within the State	993.51	993.51		1,987.02
568 Tuition To Private Residential Rehabilitative Institutions (PRRI) [In-State] and Detention Centers	8,954.42	8,954.41		17,908.83
<b>Total Other Purchased Services</b>	<b>\$9,947.93</b>	<b>\$9,947.92</b>		<b>\$19,895.85</b>
<b>Total 1440 Alternative Regular Education Programs</b>	<b>\$46,381.06</b>	<b>\$46,381.04</b>		<b>\$92,762.10</b>

LEA : 129546003     Pine Grove Area SD

Printed 12/5/2017 9:44:00 AM

General Fund (10)

1441 Adjudicated / Court-Placed Programs

500 Other Purchased Services

	<u>Elementary</u>	<u>Secondary</u>	<u>Federal</u>	<u>Total</u>
561 Tuition To Other School Districts Within the State	993.51	993.51		1,987.02
<b>Total Other Purchased Services</b>	<b>\$993.51</b>	<b>\$993.51</b>		<b>\$1,987.02</b>
<b>Total 1441 Adjudicated / Court-Placed Programs</b>	<b>\$993.51</b>	<b>\$993.51</b>		<b>\$1,987.02</b>

LEA : 129546003 Pine Grove Area SD

Printed 12/5/2017 9:44:00 AM

General Fund (10)

1442 Alternative Education Programs	<u>Elementary</u>	<u>Secondary</u>	<u>Federal</u>	<u>Total</u>
300 <u>Purchased Professional and Technical Services</u>				
322 Professional Educational Services – lus	36,433.13	36,433.12		72,866.25
Total Purchased Professional and Technical Services	\$36,433.13	\$36,433.12		\$72,866.25
500 <u>Other Purchased Services</u>				
568 Tuition To Private Residential Rehabilitative Institutions (PRRI) [In-State] and Detention Centers	8,954.42	8,954.41		17,908.83
Total Other Purchased Services	\$8,954.42	\$8,954.41		\$17,908.83
Total 1442 Alternative Education Programs	\$45,387.55	\$45,387.53		\$90,775.08

LEA : 129546003     Pine Grove Area SD

Printed 12/5/2017 9:44:00 AM

General Fund (10)

1450 Instructional Programs Outside the Established School Day	Elementary	Secondary	Federal	Total
<b>100 Personnel Services – Salaries</b>				
100 Personnel Services – Salaries	(1,176.25)	10,581.25	27,723.00	37,128.00
<b>Total Personnel Services – Salaries</b>	<b>(\$1,176.25)</b>	<b>\$10,581.25</b>	<b>\$27,723.00</b>	<b>\$37,128.00</b>
<b>200 Personnel Services – Employee Benefits</b>				
220 Social Security Contributions	399.25	1,004.67	2,105.69	3,509.61
230 PSERS Retirement Contributions	1,348.53	3,393.12	7,111.97	11,853.62
250 Unemployment Compensation		10.42	17.73	28.15
260 Workers' Compensation	43.85	110.31	231.28	385.44
<b>Total Personnel Services – Employee Benefits</b>	<b>\$1,791.63</b>	<b>\$4,518.52</b>	<b>\$9,466.67</b>	<b>\$15,776.82</b>
<b>500 Other Purchased Services</b>				
510 Student Transportation Services			15,918.72	15,918.72
580 Travel			800.68	800.68
591 Services Purchased Locally			390.00	390.00
<b>Total Other Purchased Services</b>			<b>\$17,109.40</b>	<b>\$17,109.40</b>
<b>600 Supplies</b>				
610 General Supplies	3,428.62	3,428.62	848.04	7,705.28
630 Food	851.96	851.96	7,976.04	9,679.96
<b>Total Supplies</b>	<b>\$4,280.58</b>	<b>\$4,280.58</b>	<b>\$8,824.08</b>	<b>\$17,385.24</b>
<b>Total 1450 Instructional Programs Outside the Established School Day</b>	<b>\$4,895.96</b>	<b>\$19,380.35</b>	<b>\$63,123.15</b>	<b>\$87,399.46</b>

LEA : 129546003     Pine Grove Area SD

Printed 12/5/2017 9:44:00 AM

General Fund (10)

1500 Nonpublic School Programs

	<u>Elementary</u>	<u>Secondary</u>	<u>Federal</u>	<u>Total</u>
300 <u>Purchased Professional and Technical Services</u>				
322 Professional Educational Services – lus			1,491.00	1,491.00
<b>Total Purchased Professional and Technical Services</b>			<b>\$1,491.00</b>	<b>\$1,491.00</b>
<b>Total 1500 Nonpublic School Programs</b>			<b>\$1,491.00</b>	<b>\$1,491.00</b>

LEA : 129546003     Pine Grove Area SD

Printed 12/5/2017 9:44:02 AM

<b>General Fund (10)</b>	
<b>2000 Support Services</b>	<b><u>Total</u></b>
<b>100 <u>Personnel Services – Salaries</u></b>	
100 Personnel Services – Salaries	2,476,420.58
<b>Total Personnel Services – Salaries</b>	<b>\$2,476,420.58</b>
<b>200 <u>Personnel Services – Employee Benefits</u></b>	
210 Group Insurance – Contracted Provider	761,105.35
220 Social Security Contributions	189,097.45
230 PSERS Retirement Contributions	608,780.45
250 Unemployment Compensation	1,980.10
260 Workers’ Compensation	21,324.19
<b>Total Personnel Services – Employee Benefits</b>	<b>\$1,582,287.54</b>
<b>300 <u>Purchased Professional and Technical Services</u></b>	
310 Official / Administrative Services	2,851.97
322 Professional Educational Services – Ius	123,302.83
324 Professional Educational Services – Employee Training and Development Services	191,658.83
330 Other Professional Services	99,437.00
340 Technical Services	8,658.97
<b>Total Purchased Professional and Technical Services</b>	<b>\$425,909.60</b>
<b>400 <u>Purchased Property Services</u></b>	
410 Cleaning Services	15,162.40
420 Utility Services	98,200.23
430 Repairs and Maintenance Services	50,171.76
440 Rentals	47,184.63
460 Extermination Services	1,808.73
<b>Total Purchased Property Services</b>	<b>\$212,527.75</b>
<b>500 <u>Other Purchased Services</u></b>	
513 Contracted Carriers	1,197,073.23
516 Student Transportation Services From the IU	11,650.59
520 Insurance – General	27,023.00
522 Automotive Liability Insurance	5,290.00
529 Other Insurance	100,360.00
530 Communications	57,020.45
550 Printing and Binding	336.98
580 Travel	19,012.61
599 Other Miscellaneous Purchased Services	16,724.23
<b>Total Other Purchased Services</b>	<b>\$1,434,491.09</b>
<b>600 <u>Supplies</u></b>	
610 General Supplies	207,486.54
620 Energy	81,899.58
630 Food	709.18
640 Books and Periodicals	7,368.82
650 Supplies & Fees – Technology Related	5,065.54
<b>Total Supplies</b>	<b>\$302,529.66</b>

LEA : 129546003     Pine Grove Area SD

Printed 12/5/2017 9:44:02 AM

General Fund (10)

		<u>Total</u>
<b>2000 Support Services</b>		
<b>700 <u>Property</u></b>		
750	Equipment – Original and Additional	3,975.50
760	Equipment – Replacement	1,358.61
<b>Total Property</b>		<b>\$5,334.11</b>
<b>800 <u>Other Objects</u></b>		
810	Dues and Fees	21,523.74
<b>Total Other Objects</b>		<b>\$21,523.74</b>
<b>Total 2000 Support Services</b>		<b>\$6,461,024.07</b>

LEA : 129546003     Pine Grove Area SD

Printed 12/5/2017 9:44:02 AM

General Fund (10)

2100 Support Services – Students	Elementary	Secondary	Federal	Total
100 <u>Personnel Services – Salaries</u>				
100 Personnel Services – Salaries	147,545.86	204,331.98	10,398.16	444,493.75
<b>Total Personnel Services – Salaries</b>	<b>\$147,545.86</b>	<b>\$204,331.98</b>	<b>\$10,398.16</b>	<b>\$444,493.75</b>
200 <u>Personnel Services – Employee Benefits</u>				
210 Group Insurance – Contracted Provider	34,679.53	64,677.89	1,167.15	115,747.74
220 Social Security Contributions	9,980.79	15,561.86	3,078.22	33,408.90
230 PSERS Retirement Contributions	34,715.04	54,143.43	10,747.60	116,046.61
250 Unemployment Compensation	56.87	114.52	29.46	230.68
260 Workers' Compensation	1,128.68	1,760.25	349.39	3,772.56
<b>Total Personnel Services – Employee Benefits</b>	<b>\$80,560.91</b>	<b>\$136,257.95</b>	<b>\$15,371.82</b>	<b>\$269,206.49</b>
300 <u>Purchased Professional and Technical Services</u>				
322 Professional Educational Services – lus				11,529.87
324 Professional Educational Services – Employee Training and Development Services	187.50	187.50		375.00
<b>Total Purchased Professional and Technical Services</b>	<b>\$187.50</b>	<b>\$187.50</b>		<b>\$11,904.87</b>
500 <u>Other Purchased Services</u>				
530 Communications	(465.60)	2,004.97		1,539.37
580 Travel	701.92	870.01		4,993.31
<b>Total Other Purchased Services</b>	<b>\$236.32</b>	<b>\$2,874.98</b>		<b>\$6,532.68</b>
600 <u>Supplies</u>				
610 General Supplies	2,960.96	3,318.87		6,279.83
640 Books and Periodicals	507.81	210.09		717.90
<b>Total Supplies</b>	<b>\$3,468.77</b>	<b>\$3,528.96</b>		<b>\$6,997.73</b>
800 <u>Other Objects</u>				
810 Dues and Fees	164.10	851.50		1,430.60
<b>Total Other Objects</b>	<b>\$164.10</b>	<b>\$851.50</b>		<b>\$1,430.60</b>
<b>Total 2100 Support Services – Students</b>	<b>\$232,163.46</b>	<b>\$348,032.87</b>	<b>\$25,769.98</b>	<b>\$740,566.12</b>



LEA : 129546003     Pine Grove Area SD

Printed 12/5/2017 9:44:02 AM

General Fund (10)				
2120 Guidance Services	<u>Elementary</u>	<u>Secondary</u>	<u>Federal</u>	<u>Total</u>
100 <u>Personnel Services – Salaries</u>				
100 Personnel Services – Salaries	86,119.88	142,906.00		229,025.88
<b>Total Personnel Services – Salaries</b>	<b>\$86,119.88</b>	<b>\$142,906.00</b>		<b>\$229,025.88</b>
200 <u>Personnel Services – Employee Benefits</u>				
210 Group Insurance – Contracted Provider	17,533.00	47,531.36		65,064.36
220 Social Security Contributions	6,550.93	12,132.00		18,682.93
230 PSERS Retirement Contributions	22,872.83	42,301.22		65,174.05
250 Unemployment Compensation	42.15	99.80		141.95
260 Workers' Compensation	743.67	1,375.25		2,118.92
<b>Total Personnel Services – Employee Benefits</b>	<b>\$47,742.58</b>	<b>\$103,439.63</b>		<b>\$151,182.21</b>
500 <u>Other Purchased Services</u>				
530 Communications	(465.60)	2,004.97		1,539.37
580 Travel	37.50	205.60		243.10
<b>Total Other Purchased Services</b>	<b>(\$428.10)</b>	<b>\$2,210.57</b>		<b>\$1,782.47</b>
600 <u>Supplies</u>				
610 General Supplies	1,808.70	2,166.63		3,975.33
<b>Total Supplies</b>	<b>\$1,808.70</b>	<b>\$2,166.63</b>		<b>\$3,975.33</b>
800 <u>Other Objects</u>				
810 Dues and Fees	64.60	478.00		542.60
<b>Total Other Objects</b>	<b>\$64.60</b>	<b>\$478.00</b>		<b>\$542.60</b>
<b>Total 2120 Guidance Services</b>	<b>\$135,307.66</b>	<b>\$251,200.83</b>		<b>\$386,508.49</b>

LEA : 129546003     Pine Grove Area SD

Printed 12/5/2017 9:44:02 AM

General Fund (10)

2130 Attendance Services

	<u>Elementary</u>	<u>Secondary</u>	<u>Federal</u>	<u>Total</u>
<b>100 <u>Personnel Services – Salaries</u></b>				
100 Personnel Services – Salaries				17,500.00
<b>Total Personnel Services – Salaries</b>				<b>\$17,500.00</b>
<b>200 <u>Personnel Services – Employee Benefits</u></b>				
210 Group Insurance – Contracted Provider				7,611.54
220 Social Security Contributions				1,724.32
230 PSERS Retirement Contributions				5,924.00
250 Unemployment Compensation				14.76
260 Workers' Compensation				192.46
<b>Total Personnel Services – Employee Benefits</b>				<b>\$15,467.08</b>
<b>500 <u>Other Purchased Services</u></b>				
580 Travel				210.00
<b>Total Other Purchased Services</b>				<b>\$210.00</b>
<b>Total 2130 Attendance Services</b>				<b>\$33,177.08</b>

LEA : 129546003     Pine Grove Area SD

Printed 12/5/2017 9:44:02 AM

General Fund (10)

2140 Psychological Services	Elementary	Secondary	Federal	Total
100 <u>Personnel Services – Salaries</u>				
100 Personnel Services – Salaries	61,425.98	61,425.98	10,398.16	133,250.12
<b>Total Personnel Services – Salaries</b>	<b>\$61,425.98</b>	<b>\$61,425.98</b>	<b>\$10,398.16</b>	<b>\$133,250.12</b>
200 <u>Personnel Services – Employee Benefits</u>				
210 Group Insurance – Contracted Provider	17,146.53	17,146.53	1,167.15	35,460.21
220 Social Security Contributions	3,429.86	3,429.86	3,078.22	9,937.94
230 PSERS Retirement Contributions	11,842.21	11,842.21	10,747.60	34,432.02
250 Unemployment Compensation	14.72	14.72	29.46	58.90
260 Workers' Compensation	385.01	385.00	349.39	1,119.40
<b>Total Personnel Services – Employee Benefits</b>	<b>\$32,818.33</b>	<b>\$32,818.32</b>	<b>\$15,371.82</b>	<b>\$81,008.47</b>
300 <u>Purchased Professional and Technical Services</u>				
324 Professional Educational Services – Employee Training and Development Services	187.50	187.50		375.00
<b>Total Purchased Professional and Technical Services</b>	<b>\$187.50</b>	<b>\$187.50</b>		<b>\$375.00</b>
500 <u>Other Purchased Services</u>				
580 Travel	664.42	664.41		1,328.83
<b>Total Other Purchased Services</b>	<b>\$664.42</b>	<b>\$664.41</b>		<b>\$1,328.83</b>
600 <u>Supplies</u>				
610 General Supplies	1,152.26	1,152.24		2,304.50
640 Books and Periodicals	507.81	210.09		717.90
<b>Total Supplies</b>	<b>\$1,660.07</b>	<b>\$1,362.33</b>		<b>\$3,022.40</b>
800 <u>Other Objects</u>				
810 Dues and Fees	99.50	373.50		473.00
<b>Total Other Objects</b>	<b>\$99.50</b>	<b>\$373.50</b>		<b>\$473.00</b>
<b>Total 2140 Psychological Services</b>	<b>\$96,855.80</b>	<b>\$96,832.04</b>	<b>\$25,769.98</b>	<b>\$219,457.82</b>

LEA : 129546003     Pine Grove Area SD

Printed 12/5/2017 9:44:02 AM

<b>General Fund (10)</b>				
<b>2160 Social Work Services</b>	<b><u>Elementary</u></b>	<b><u>Secondary</u></b>	<b><u>Federal</u></b>	<b><u>Total</u></b>
<b>100 <u>Personnel Services – Salaries</u></b>				
100 Personnel Services – Salaries				64,717.75
<b>Total Personnel Services – Salaries</b>				<b>\$64,717.75</b>
<b>200 <u>Personnel Services – Employee Benefits</u></b>				
210 Group Insurance – Contracted Provider				7,611.63
220 Social Security Contributions				3,063.71
230 PSERS Retirement Contributions				10,516.54
250 Unemployment Compensation				15.07
260 Workers' Compensation				341.78
<b>Total Personnel Services – Employee Benefits</b>				<b>\$21,548.73</b>
<b>300 <u>Purchased Professional and Technical Services</u></b>				
322 Professional Educational Services – lus				7,165.94
<b>Total Purchased Professional and Technical Services</b>				<b>\$7,165.94</b>
<b>500 <u>Other Purchased Services</u></b>				
580 Travel				3,211.38
<b>Total Other Purchased Services</b>				<b>\$3,211.38</b>
<b>800 <u>Other Objects</u></b>				
810 Dues and Fees				415.00
<b>Total Other Objects</b>				<b>\$415.00</b>
<b>Total 2160 Social Work Services</b>				<b>\$97,058.80</b>

LEA : 129546003     Pine Grove Area SD

Printed 12/5/2017 9:44:02 AM

General Fund (10)

2170 Student Accounting Services

<u>Elementary</u>	<u>Secondary</u>	<u>Federal</u>	<u>Total</u>
-------------------	------------------	----------------	--------------

300 Purchased Professional and Technical Services

322 Professional Educational Services – lus			4,363.93
---	--	--	----------

<b>Total Purchased Professional and Technical Services</b>			<b>\$4,363.93</b>
--	--	--	-------------------

<b>Total 2170 Student Accounting Services</b>			<b>\$4,363.93</b>
---	--	--	-------------------

LEA : 129546003     Pine Grove Area SD

Printed 12/5/2017 9:44:02 AM

General Fund (10)

2200 Support Services – Instructional Staff	Elementary	Secondary	Federal	Total
<b>100 Personnel Services – Salaries</b>				
100 Personnel Services – Salaries	158,653.22	109,123.59		267,776.81
<b>Total Personnel Services – Salaries</b>	<b>\$158,653.22</b>	<b>\$109,123.59</b>		<b>\$267,776.81</b>
<b>200 Personnel Services – Employee Benefits</b>				
210 Group Insurance – Contracted Provider	32,725.02	25,171.71		57,896.73
220 Social Security Contributions	11,799.83	8,207.44		20,007.27
230 PSERS Retirement Contributions	41,020.46	28,666.49		69,686.95
250 Unemployment Compensation	104.33	63.50		167.83
260 Workers' Compensation	1,333.38	931.83		2,265.21
<b>Total Personnel Services – Employee Benefits</b>	<b>\$86,983.02</b>	<b>\$63,040.97</b>		<b>\$150,023.99</b>
<b>300 Purchased Professional and Technical Services</b>				
324 Professional Educational Services – Employee Training and Development Services	43,704.30	43,355.30		87,059.60
330 Other Professional Services	447.50	447.50		895.00
<b>Total Purchased Professional and Technical Services</b>	<b>\$44,151.80</b>	<b>\$43,802.80</b>		<b>\$87,954.60</b>
<b>400 Purchased Property Services</b>				
430 Repairs and Maintenance Services	7,016.28	6,875.08		13,891.36
440 Rentals		62.41		62.41
<b>Total Purchased Property Services</b>	<b>\$7,016.28</b>	<b>\$6,937.49</b>		<b>\$13,953.77</b>
<b>500 Other Purchased Services</b>				
530 Communications	11,786.13	11,786.12		23,572.25
580 Travel	3,419.96	1,801.96		5,221.92
<b>Total Other Purchased Services</b>	<b>\$15,206.09</b>	<b>\$13,588.08</b>		<b>\$28,794.17</b>
<b>600 Supplies</b>				
610 General Supplies	25,976.59	29,139.66		55,116.25
630 Food	126.09	50.21		176.30
640 Books and Periodicals	2,425.42	4,014.50		6,439.92
650 Supplies & Fees – Technology Related	3,865.54	1,200.00		5,065.54
<b>Total Supplies</b>	<b>\$32,393.64</b>	<b>\$34,404.37</b>		<b>\$66,798.01</b>
<b>700 Property</b>				
750 Equipment – Original and Additional	3,710.50			3,710.50
<b>Total Property</b>	<b>\$3,710.50</b>			<b>\$3,710.50</b>
<b>Total 2200 Support Services – Instructional Staff</b>	<b>\$348,114.55</b>	<b>\$270,897.30</b>		<b>\$619,011.85</b>

LEA : 129546003     Pine Grove Area SD

Printed 12/5/2017 9:44:02 AM

General Fund (10)

2220 Technology Support Services	Elementary	Secondary	Federal	Total
100 <u>Personnel Services – Salaries</u>				
100 Personnel Services – Salaries	24,962.34	24,962.34		49,924.68
<b>Total Personnel Services – Salaries</b>	<b>\$24,962.34</b>	<b>\$24,962.34</b>		<b>\$49,924.68</b>
200 <u>Personnel Services – Employee Benefits</u>				
210 Group Insurance – Contracted Provider	61.20	61.20		122.40
220 Social Security Contributions	1,987.29	1,987.29		3,974.58
230 PSERS Retirement Contributions	6,712.57	6,712.57		13,425.14
250 Unemployment Compensation	13.41	13.40		26.81
260 Workers' Compensation	218.19	218.18		436.37
<b>Total Personnel Services – Employee Benefits</b>	<b>\$8,992.66</b>	<b>\$8,992.64</b>		<b>\$17,985.30</b>
300 <u>Purchased Professional and Technical Services</u>				
324 Professional Educational Services – Employee Training and Development Services	42,500.00	42,500.00		85,000.00
<b>Total Purchased Professional and Technical Services</b>	<b>\$42,500.00</b>	<b>\$42,500.00</b>		<b>\$85,000.00</b>
400 <u>Purchased Property Services</u>				
430 Repairs and Maintenance Services	7,016.28	6,875.08		13,891.36
<b>Total Purchased Property Services</b>	<b>\$7,016.28</b>	<b>\$6,875.08</b>		<b>\$13,891.36</b>
500 <u>Other Purchased Services</u>				
530 Communications	11,786.13	11,786.12		23,572.25
<b>Total Other Purchased Services</b>	<b>\$11,786.13</b>	<b>\$11,786.12</b>		<b>\$23,572.25</b>
600 <u>Supplies</u>				
610 General Supplies	22,925.89	24,868.89		47,794.78
650 Supplies & Fees – Technology Related	3,865.54	1,200.00		5,065.54
<b>Total Supplies</b>	<b>\$26,791.43</b>	<b>\$26,068.89</b>		<b>\$52,860.32</b>
700 <u>Property</u>				
750 Equipment – Original and Additional	3,710.50			3,710.50
<b>Total Property</b>	<b>\$3,710.50</b>			<b>\$3,710.50</b>
<b>Total 2220 Technology Support Services</b>	<b>\$125,759.34</b>	<b>\$121,185.07</b>		<b>\$246,944.41</b>

LEA : 129546003     Pine Grove Area SD

Printed 12/5/2017 9:44:02 AM

<b>General Fund (10)</b>				
<b>2250 School Library Services</b>	<b><u>Elementary</u></b>	<b><u>Secondary</u></b>	<b><u>Federal</u></b>	<b><u>Total</u></b>
<b>100 <u>Personnel Services – Salaries</u></b>				
100 Personnel Services – Salaries	65,298.35	21,549.45		86,847.80
<b>Total Personnel Services – Salaries</b>	<b>\$65,298.35</b>	<b>\$21,549.45</b>		<b>\$86,847.80</b>
<b>200 <u>Personnel Services – Employee Benefits</u></b>				
210 Group Insurance – Contracted Provider	17,495.43	9,942.12		27,437.55
220 Social Security Contributions	4,778.56	1,496.83		6,275.39
230 PSERS Retirement Contributions	16,873.21	5,568.41		22,441.62
250 Unemployment Compensation	43.58	14.10		57.68
260 Workers' Compensation	548.37	180.97		729.34
<b>Total Personnel Services – Employee Benefits</b>	<b>\$39,739.15</b>	<b>\$17,202.43</b>		<b>\$56,941.58</b>
<b>400 <u>Purchased Property Services</u></b>				
440 Rentals		62.41		62.41
<b>Total Purchased Property Services</b>		<b>\$62.41</b>		<b>\$62.41</b>
<b>600 <u>Supplies</u></b>				
610 General Supplies	2,353.31	4,205.55		6,558.86
640 Books and Periodicals	1,779.50	1,514.50		3,294.00
<b>Total Supplies</b>	<b>\$4,132.81</b>	<b>\$5,720.05</b>		<b>\$9,852.86</b>
<b>Total 2250 School Library Services</b>	<b>\$109,170.31</b>	<b>\$44,534.34</b>		<b>\$153,704.65</b>



LEA : 129546003     Pine Grove Area SD

Printed 12/5/2017 9:44:02 AM

General Fund (10)				
2260 Instruction and Curriculum Development Services	<u>Elementary</u>	<u>Secondary</u>	<u>Federal</u>	<u>Total</u>
100 <u>Personnel Services – Salaries</u>				
100 Personnel Services – Salaries	61,432.23	62,611.80		124,044.03
<b>Total Personnel Services – Salaries</b>	<b>\$61,432.23</b>	<b>\$62,611.80</b>		<b>\$124,044.03</b>
200 <u>Personnel Services – Employee Benefits</u>				
210 Group Insurance – Contracted Provider	15,168.39	15,168.39		30,336.78
220 Social Security Contributions	4,501.50	4,723.32		9,224.82
230 PSERS Retirement Contributions	15,636.15	16,385.51		32,021.66
250 Unemployment Compensation	36.02	36.00		72.02
260 Workers' Compensation	508.33	532.68		1,041.01
<b>Total Personnel Services – Employee Benefits</b>	<b>\$35,850.39</b>	<b>\$36,845.90</b>		<b>\$72,696.29</b>
300 <u>Purchased Professional and Technical Services</u>				
324 Professional Educational Services – Employee Training and Development Services	692.30	692.30		1,384.60
330 Other Professional Services	447.50	447.50		895.00
<b>Total Purchased Professional and Technical Services</b>	<b>\$1,139.80</b>	<b>\$1,139.80</b>		<b>\$2,279.60</b>
500 <u>Other Purchased Services</u>				
580 Travel	1,801.96	1,801.96		3,603.92
<b>Total Other Purchased Services</b>	<b>\$1,801.96</b>	<b>\$1,801.96</b>		<b>\$3,603.92</b>
600 <u>Supplies</u>				
610 General Supplies	697.39	65.22		762.61
630 Food	118.87	43.00		161.87
640 Books and Periodicals	645.92	2,500.00		3,145.92
<b>Total Supplies</b>	<b>\$1,462.18</b>	<b>\$2,608.22</b>		<b>\$4,070.40</b>
<b>Total 2260 Instruction and Curriculum Development Services</b>	<b>\$101,686.56</b>	<b>\$105,007.68</b>		<b>\$206,694.24</b>

LEA : 129546003     Pine Grove Area SD

Printed 12/5/2017 9:44:02 AM

<b>General Fund (10)</b>				
<b>2270 Instructional Staff Professional Development Services</b>	<u><b>Elementary</b></u>	<u><b>Secondary</b></u>	<u><b>Federal</b></u>	<u><b>Total</b></u>
<b>300 <u>Purchased Professional and Technical Services</u></b>				
324 Professional Educational Services – Employee Training and Development Services	512.00	163.00		675.00
<b>Total Purchased Professional and Technical Services</b>	<b>\$512.00</b>	<b>\$163.00</b>		<b>\$675.00</b>
<b>500 <u>Other Purchased Services</u></b>				
580 Travel	1,618.00			1,618.00
<b>Total Other Purchased Services</b>	<b>\$1,618.00</b>			<b>\$1,618.00</b>
<b>600 <u>Supplies</u></b>				
630 Food	7.22	7.21		14.43
<b>Total Supplies</b>	<b>\$7.22</b>	<b>\$7.21</b>		<b>\$14.43</b>
<b>Total 2270 Instructional Staff Professional Development Services</b>	<b>\$2,137.22</b>	<b>\$170.21</b>		<b>\$2,307.43</b>

LEA : 129546003     Pine Grove Area SD

Printed 12/5/2017 9:44:02 AM

General Fund (10)

2290 Other Instructional Staff Services	<u>Elementary</u>	<u>Secondary</u>	<u>Federal</u>	<u>Total</u>
100 <u>Personnel Services – Salaries</u>				
100 Personnel Services – Salaries	6,960.30			6,960.30
<b>Total Personnel Services – Salaries</b>	<b>\$6,960.30</b>			<b>\$6,960.30</b>
200 <u>Personnel Services – Employee Benefits</u>				
220 Social Security Contributions	532.48			532.48
230 PSERS Retirement Contributions	1,798.53			1,798.53
250 Unemployment Compensation	11.32			11.32
260 Workers' Compensation	58.49			58.49
<b>Total Personnel Services – Employee Benefits</b>	<b>\$2,400.82</b>			<b>\$2,400.82</b>
<b>Total 2290 Other Instructional Staff Services</b>	<b>\$9,361.12</b>			<b>\$9,361.12</b>

LEA : 129546003     Pine Grove Area SD

Printed 12/5/2017 9:44:02 AM

<b>General Fund (10)</b>				
<b>2300 Support Services – Administration</b>	<b><u>Elementary</u></b>	<b><u>Secondary</u></b>	<b><u>Federal</u></b>	<b><u>Total</u></b>
<b>100 <u>Personnel Services – Salaries</u></b>				
100 Personnel Services – Salaries	234,118.88	243,375.87		648,166.04
<b>Total Personnel Services – Salaries</b>	<b>\$234,118.88</b>	<b>\$243,375.87</b>		<b>\$648,166.04</b>
<b>200 <u>Personnel Services – Employee Benefits</u></b>				
210 Group Insurance – Contracted Provider	275,766.89	43,980.28		344,782.77
220 Social Security Contributions	17,870.90	18,201.38		48,795.32
230 PSERS Retirement Contributions	57,579.26	59,509.81		160,159.36
250 Unemployment Compensation	148.05	123.81		332.54
260 Workers' Compensation	2,007.03	2,051.38		5,493.21
<b>Total Personnel Services – Employee Benefits</b>	<b>\$353,372.13</b>	<b>\$123,866.66</b>		<b>\$559,563.20</b>
<b>300 <u>Purchased Professional and Technical Services</u></b>				
310 Official / Administrative Services				2,851.97
324 Professional Educational Services – Employee Training and Development Services				3,124.49
330 Other Professional Services				90,869.00
340 Technical Services				2,098.97
<b>Total Purchased Professional and Technical Services</b>				<b>\$98,944.43</b>
<b>400 <u>Purchased Property Services</u></b>				
440 Rentals	24,617.57	15,538.55		40,156.12
<b>Total Purchased Property Services</b>	<b>\$24,617.57</b>	<b>\$15,538.55</b>		<b>\$40,156.12</b>
<b>500 <u>Other Purchased Services</u></b>				
520 Insurance – General				27,023.00
530 Communications				11,324.00
550 Printing and Binding				291.00
580 Travel	200.88	928.25		8,564.75
599 Other Miscellaneous Purchased Services				16,724.23
<b>Total Other Purchased Services</b>	<b>\$200.88</b>	<b>\$928.25</b>		<b>\$63,926.98</b>
<b>600 <u>Supplies</u></b>				
610 General Supplies	537.48	4,661.29		21,824.92
630 Food	206.00	326.88		532.88
640 Books and Periodicals				211.00
<b>Total Supplies</b>	<b>\$743.48</b>	<b>\$4,988.17</b>		<b>\$22,568.80</b>
<b>800 <u>Other Objects</u></b>				
810 Dues and Fees	595.00			9,263.80
<b>Total Other Objects</b>	<b>\$595.00</b>			<b>\$9,263.80</b>
<b>Total 2300 Support Services – Administration</b>	<b>\$613,647.94</b>	<b>\$388,697.50</b>		<b>\$1,442,589.37</b>

LEA : 129546003 Pine Grove Area SD

Printed 12/5/2017 9:44:02 AM

General Fund (10)

2310 Board Services

	<u>Elementary</u>	<u>Secondary</u>	<u>Federal</u>	<u>Total</u>
<b>300 <u>Purchased Professional and Technical Services</u></b>				
324 Professional Educational Services – Employee Training and Development Services				2,066.40
330 Other Professional Services				4,625.00
340 Technical Services				2,098.97
<b>Total Purchased Professional and Technical Services</b>				<b>\$8,790.37</b>
<b>500 <u>Other Purchased Services</u></b>				
520 Insurance – General				27,023.00
550 Printing and Binding				291.00
580 Travel				149.02
599 Other Miscellaneous Purchased Services				16,724.23
<b>Total Other Purchased Services</b>				<b>\$44,187.25</b>
<b>600 <u>Supplies</u></b>				
610 General Supplies				1,028.53
640 Books and Periodicals				211.00
<b>Total Supplies</b>				<b>\$1,239.53</b>
<b>800 <u>Other Objects</u></b>				
810 Dues and Fees				50.00
<b>Total Other Objects</b>				<b>\$50.00</b>
<b>Total 2310 Board Services</b>				<b>\$54,267.15</b>

LEA : 129546003     Pine Grove Area SD

Printed 12/5/2017 9:44:02 AM

General Fund (10)

2330 Tax Assessment and Collection Services	<u>Elementary</u>	<u>Secondary</u>	<u>Federal</u>	<u>Total</u>
100 <u>Personnel Services – Salaries</u>				
100 Personnel Services – Salaries				4,122.85
Total Personnel Services – Salaries				\$4,122.85
200 <u>Personnel Services – Employee Benefits</u>				
220 Social Security Contributions				315.39
260 Workers’ Compensation				34.60
Total Personnel Services – Employee Benefits				\$349.99
300 <u>Purchased Professional and Technical Services</u>				
310 Official / Administrative Services				2,851.97
Total Purchased Professional and Technical Services				\$2,851.97
500 <u>Other Purchased Services</u>				
530 Communications				11,324.00
Total Other Purchased Services				\$11,324.00
Total 2330 Tax Assessment and Collection Services				\$18,648.81

LEA : 129546003     Pine Grove Area SD

Printed 12/5/2017 9:44:02 AM

General Fund (10)

2350 Legal and Accounting Services	<u>Elementary</u>	<u>Secondary</u>	<u>Federal</u>	<u>Total</u>
300 <u>Purchased Professional and Technical Services</u>				
330 Other Professional Services				86,244.00
Total Purchased Professional and Technical Services				\$86,244.00
Total 2350 Legal and Accounting Services				\$86,244.00

LEA : 129546003     Pine Grove Area SD

Printed 12/5/2017 9:44:02 AM

General Fund (10)				
2360 Office of the Superintendent / Executive Director Services	<u>Elementary</u>	<u>Secondary</u>	<u>Federal</u>	<u>Total</u>
100 <u>Personnel Services – Salaries</u>				
100 Personnel Services – Salaries				166,548.44
Total Personnel Services – Salaries				\$166,548.44
200 <u>Personnel Services – Employee Benefits</u>				
210 Group Insurance – Contracted Provider				25,035.60
220 Social Security Contributions				12,407.65
230 PSERS Retirement Contributions				43,070.29
250 Unemployment Compensation				60.68
260 Workers' Compensation				1,400.20
Total Personnel Services – Employee Benefits				\$81,974.42
300 <u>Purchased Professional and Technical Services</u>				
324 Professional Educational Services – Employee Training and Development Services				1,058.09
Total Purchased Professional and Technical Services				\$1,058.09
500 <u>Other Purchased Services</u>				
580 Travel				7,286.60
Total Other Purchased Services				\$7,286.60
600 <u>Supplies</u>				
610 General Supplies				12,567.65
Total Supplies				\$12,567.65
800 <u>Other Objects</u>				
810 Dues and Fees				7,691.23
Total Other Objects				\$7,691.23
Total 2360 Office of the Superintendent / Executive Director Services				\$277,126.43



LEA : 129546003     Pine Grove Area SD

Printed 12/5/2017 9:44:02 AM

General Fund (10)				
2380 Office of the Principal Services	<u>Elementary</u>	<u>Secondary</u>	<u>Federal</u>	<u>Total</u>
100 <u>Personnel Services – Salaries</u>				
100 Personnel Services – Salaries	234,118.88	243,375.87		477,494.75
<b>Total Personnel Services – Salaries</b>	<b>\$234,118.88</b>	<b>\$243,375.87</b>		<b>\$477,494.75</b>
200 <u>Personnel Services – Employee Benefits</u>				
210 Group Insurance – Contracted Provider	275,766.89	43,980.28		319,747.17
220 Social Security Contributions	17,870.90	18,201.38		36,072.28
230 PSERS Retirement Contributions	57,579.26	59,509.81		117,089.07
250 Unemployment Compensation	148.05	123.81		271.86
260 Workers' Compensation	2,007.03	2,051.38		4,058.41
<b>Total Personnel Services – Employee Benefits</b>	<b>\$353,372.13</b>	<b>\$123,866.66</b>		<b>\$477,238.79</b>
400 <u>Purchased Property Services</u>				
440 Rentals	24,617.57	15,538.55		40,156.12
<b>Total Purchased Property Services</b>	<b>\$24,617.57</b>	<b>\$15,538.55</b>		<b>\$40,156.12</b>
500 <u>Other Purchased Services</u>				
580 Travel	200.88	928.25		1,129.13
<b>Total Other Purchased Services</b>	<b>\$200.88</b>	<b>\$928.25</b>		<b>\$1,129.13</b>
600 <u>Supplies</u>				
610 General Supplies	537.48	4,661.29		5,198.77
630 Food	206.00	326.88		532.88
<b>Total Supplies</b>	<b>\$743.48</b>	<b>\$4,988.17</b>		<b>\$5,731.65</b>
800 <u>Other Objects</u>				
810 Dues and Fees	595.00			595.00
<b>Total Other Objects</b>	<b>\$595.00</b>			<b>\$595.00</b>
<b>Total 2380 Office of the Principal Services</b>	<b>\$613,647.94</b>	<b>\$388,697.50</b>		<b>\$1,002,345.44</b>

LEA : 129546003 Pine Grove Area SD

Printed 12/5/2017 9:44:02 AM

General Fund (10)

2390 Other Administration Services	<u>Elementary</u>	<u>Secondary</u>	<u>Federal</u>	<u>Total</u>
600 <u>Supplies</u>				
610 General Supplies				3,029.97
Total Supplies				\$3,029.97
800 <u>Other Objects</u>				
810 Dues and Fees				927.57
Total Other Objects				\$927.57
Total 2390 Other Administration Services				\$3,957.54

LEA : 129546003     Pine Grove Area SD

Printed 12/5/2017 9:44:02 AM

General Fund (10)				
2400 Support Services – Pupil Health	<u>Elementary</u>	<u>Secondary</u>	<u>Federal</u>	<u>Total</u>
100 <u>Personnel Services – Salaries</u>				
100 Personnel Services – Salaries				119,543.60
Total Personnel Services – Salaries				\$119,543.60
200 <u>Personnel Services – Employee Benefits</u>				
210 Group Insurance – Contracted Provider				40,116.04
220 Social Security Contributions				8,155.84
230 PSERS Retirement Contributions				28,418.99
250 Unemployment Compensation				97.69
260 Workers' Compensation				1,004.34
Total Personnel Services – Employee Benefits				\$77,792.90
300 <u>Purchased Professional and Technical Services</u>				
322 Professional Educational Services – lus				18,602.34
330 Other Professional Services				998.00
Total Purchased Professional and Technical Services				\$19,600.34
400 <u>Purchased Property Services</u>				
430 Repairs and Maintenance Services				520.00
Total Purchased Property Services				\$520.00
500 <u>Other Purchased Services</u>				
580 Travel				78.55
Total Other Purchased Services				\$78.55
600 <u>Supplies</u>				
610 General Supplies				3,081.74
Total Supplies				\$3,081.74
Total 2400 Support Services – Pupil Health				\$220,617.13

LEA : 129546003 Pine Grove Area SD

Printed 12/5/2017 9:44:02 AM

General Fund (10)

2420 Medical Services

Elementary                      Secondary                      Federal                      Total

300 Purchased Professional and Technical Services

322 Professional Educational Services – lus 18,602.34

330 Other Professional Services 920.00

**Total Purchased Professional and Technical Services \$19,522.34**

600 Supplies

610 General Supplies 1,101.46

**Total Supplies \$1,101.46**

**Total 2420 Medical Services \$20,623.80**

LEA : 129546003     Pine Grove Area SD

Printed 12/5/2017 9:44:02 AM

General Fund (10)

2430 Dental Services

<u>Elementary</u>	<u>Secondary</u>	<u>Federal</u>	<u>Total</u>
-------------------	------------------	----------------	--------------

300 Purchased Professional and Technical Services

330 Other Professional Services			78.00
---------------------------------	--	--	-------

<b>Total Purchased Professional and Technical Services</b>			<b>\$78.00</b>
--	--	--	----------------

<b>Total 2430 Dental Services</b>			<b>\$78.00</b>
-----------------------------------	--	--	----------------

LEA : 129546003     Pine Grove Area SD

Printed 12/5/2017 9:44:02 AM

General Fund (10)				
2440 Nursing Services				
	<u>Elementary</u>	<u>Secondary</u>	<u>Federal</u>	<u>Total</u>
100 <u>Personnel Services – Salaries</u>				
100 Personnel Services – Salaries				119,543.60
Total Personnel Services – Salaries				\$119,543.60
200 <u>Personnel Services – Employee Benefits</u>				
210 Group Insurance – Contracted Provider				40,116.04
220 Social Security Contributions				8,155.84
230 PSERS Retirement Contributions				28,418.99
250 Unemployment Compensation				97.69
260 Workers' Compensation				1,004.34
Total Personnel Services – Employee Benefits				\$77,792.90
400 <u>Purchased Property Services</u>				
430 Repairs and Maintenance Services				520.00
Total Purchased Property Services				\$520.00
500 <u>Other Purchased Services</u>				
580 Travel				78.55
Total Other Purchased Services				\$78.55
600 <u>Supplies</u>				
610 General Supplies				1,980.28
Total Supplies				\$1,980.28
Total 2440 Nursing Services				\$199,915.33

LEA : 129546003     Pine Grove Area SD

Printed 12/5/2017 9:44:02 AM

General Fund (10)				
2500 Support Services – Business	<u>Elementary</u>	<u>Secondary</u>	<u>Federal</u>	<u>Total</u>
100 <u>Personnel Services – Salaries</u>				
100 Personnel Services – Salaries				110,042.61
Total Personnel Services – Salaries				\$110,042.61
200 <u>Personnel Services – Employee Benefits</u>				
210 Group Insurance – Contracted Provider				24,497.42
220 Social Security Contributions				8,613.78
230 PSERS Retirement Contributions				29,593.31
250 Unemployment Compensation				86.73
260 Workers' Compensation				962.18
Total Personnel Services – Employee Benefits				\$63,753.42
300 <u>Purchased Professional and Technical Services</u>				
324 Professional Educational Services – Employee Training and Development Services				100,618.64
330 Other Professional Services				6,675.00
340 Technical Services				935.00
Total Purchased Professional and Technical Services				\$108,228.64
400 <u>Purchased Property Services</u>				
440 Rentals				2,240.20
Total Purchased Property Services				\$2,240.20
500 <u>Other Purchased Services</u>				
530 Communications				134.63
550 Printing and Binding				45.98
Total Other Purchased Services				\$180.61
600 <u>Supplies</u>				
610 General Supplies				25,264.27
Total Supplies				\$25,264.27
800 <u>Other Objects</u>				
810 Dues and Fees				10,652.64
Total Other Objects				\$10,652.64
Total 2500 Support Services – Business				\$320,362.39

LEA : 129546003     Pine Grove Area SD

Printed 12/5/2017 9:44:02 AM

General Fund (10)				
2510 Fiscal Services	<u>Elementary</u>	<u>Secondary</u>	<u>Federal</u>	<u>Total</u>
100 <u>Personnel Services – Salaries</u>				
100 Personnel Services – Salaries				110,042.61
Total Personnel Services – Salaries				\$110,042.61
200 <u>Personnel Services – Employee Benefits</u>				
210 Group Insurance – Contracted Provider				24,497.42
220 Social Security Contributions				8,613.78
230 PSERS Retirement Contributions				29,593.31
250 Unemployment Compensation				86.73
260 Workers' Compensation				962.18
Total Personnel Services – Employee Benefits				\$63,753.42
300 <u>Purchased Professional and Technical Services</u>				
324 Professional Educational Services – Employee Training and Development Services				100,618.64
330 Other Professional Services				6,375.00
340 Technical Services				935.00
Total Purchased Professional and Technical Services				\$107,928.64
400 <u>Purchased Property Services</u>				
440 Rentals				2,240.20
Total Purchased Property Services				\$2,240.20
500 <u>Other Purchased Services</u>				
530 Communications				134.63
550 Printing and Binding				45.98
Total Other Purchased Services				\$180.61
600 <u>Supplies</u>				
610 General Supplies				25,264.27
Total Supplies				\$25,264.27
800 <u>Other Objects</u>				
810 Dues and Fees				554.48
Total Other Objects				\$554.48
Total 2510 Fiscal Services				\$309,964.23



LEA : 129546003     Pine Grove Area SD

Printed 12/5/2017 9:44:02 AM

General Fund (10)				
2511 Supervision of Fiscal Services - Head of Component	<u>Elementary</u>	<u>Secondary</u>	<u>Federal</u>	<u>Total</u>
300 <u>Purchased Professional and Technical Services</u>				
324 Professional Educational Services – Employee Training and Development Services				59,208.37
Total Purchased Professional and Technical Services				\$59,208.37
400 <u>Purchased Property Services</u>				
440 Rentals				2,240.20
Total Purchased Property Services				\$2,240.20
500 <u>Other Purchased Services</u>				
530 Communications				134.63
550 Printing and Binding				45.98
Total Other Purchased Services				\$180.61
600 <u>Supplies</u>				
610 General Supplies				23,068.98
Total Supplies				\$23,068.98
800 <u>Other Objects</u>				
810 Dues and Fees				13.00
Total Other Objects				\$13.00
Total 2511 Supervision of Fiscal Services - Head of Component				\$84,711.16

LEA : 129546003     Pine Grove Area SD

Printed 12/5/2017 9:44:02 AM

General Fund (10)				
2513 Receiving and Disbursing Funds Services	<u>Elementary</u>	<u>Secondary</u>	<u>Federal</u>	<u>Total</u>
100 <u>Personnel Services – Salaries</u>				
100 Personnel Services – Salaries				35,862.45
Total Personnel Services – Salaries				\$35,862.45
200 <u>Personnel Services – Employee Benefits</u>				
210 Group Insurance – Contracted Provider				969.24
220 Social Security Contributions				2,865.05
230 PSERS Retirement Contributions				9,677.40
250 Unemployment Compensation				28.01
260 Workers' Compensation				314.59
Total Personnel Services – Employee Benefits				\$13,854.29
600 <u>Supplies</u>				
610 General Supplies				19.33
Total Supplies				\$19.33
800 <u>Other Objects</u>				
810 Dues and Fees				541.48
Total Other Objects				\$541.48
Total 2513 Receiving and Disbursing Funds Services				\$50,277.55

LEA : 129546003     Pine Grove Area SD

Printed 12/5/2017 9:44:02 AM

General Fund (10)

2514 Payroll Services

Elementary                      Secondary                      Federal                      Total

300 Purchased Professional and Technical Services

324 Professional Educational Services – Employee Training and Development Services 41,410.27

330 Other Professional Services 6,375.00

**Total Purchased Professional and Technical Services \$47,785.27**

600 Supplies

610 General Supplies 2,175.96

**Total Supplies \$2,175.96**

**Total 2514 Payroll Services \$49,961.23**

LEA : 129546003     Pine Grove Area SD

Printed 12/5/2017 9:44:02 AM

General Fund (10)

2515 Financial Accounting Services	<u>Elementary</u>	<u>Secondary</u>	<u>Federal</u>	<u>Total</u>
100 <u>Personnel Services – Salaries</u>				
100 Personnel Services – Salaries				74,180.16
Total Personnel Services – Salaries				\$74,180.16
200 <u>Personnel Services – Employee Benefits</u>				
210 Group Insurance – Contracted Provider				23,528.18
220 Social Security Contributions				5,748.73
230 PSERS Retirement Contributions				19,915.91
250 Unemployment Compensation				58.72
260 Workers' Compensation				647.59
Total Personnel Services – Employee Benefits				\$49,899.13
300 <u>Purchased Professional and Technical Services</u>				
340 Technical Services				935.00
Total Purchased Professional and Technical Services				\$935.00
Total 2515 Financial Accounting Services				\$125,014.29

LEA : 129546003     Pine Grove Area SD

Printed 12/5/2017 9:44:02 AM

General Fund (10)				
2520 Purchasing Services	<u>Elementary</u>	<u>Secondary</u>	<u>Federal</u>	<u>Total</u>
800 <u>Other Objects</u>				
810 Dues and Fees				10,098.16
Total Other Objects				\$10,098.16
Total 2520 Purchasing Services				\$10,098.16

LEA : 129546003     Pine Grove Area SD

Printed 12/5/2017 9:44:02 AM

General Fund (10)

2590 Other Support Services – Business	<u>Elementary</u>	<u>Secondary</u>	<u>Federal</u>	<u>Total</u>
300 <u>Purchased Professional and Technical Services</u>				
330 Other Professional Services				300.00
Total Purchased Professional and Technical Services				\$300.00
Total 2590 Other Support Services – Business				\$300.00

LEA : 129546003     Pine Grove Area SD

Printed 12/5/2017 9:44:02 AM

General Fund (10)				
2600 Operation and Maintenance of Plant Services	<u>Elementary</u>	<u>Secondary</u>	<u>Federal</u>	<u>Total</u>
100 <u>Personnel Services – Salaries</u>				
100 Personnel Services – Salaries				732,682.18
Total Personnel Services – Salaries				\$732,682.18
200 <u>Personnel Services – Employee Benefits</u>				
210 Group Insurance – Contracted Provider				176,925.41
220 Social Security Contributions				58,412.05
230 PSERS Retirement Contributions				191,443.46
250 Unemployment Compensation				911.14
260 Workers' Compensation				6,532.22
Total Personnel Services – Employee Benefits				\$434,224.28
300 <u>Purchased Professional and Technical Services</u>				
324 Professional Educational Services – Employee Training and Development Services				171.10
340 Technical Services				5,625.00
Total Purchased Professional and Technical Services				\$5,796.10
400 <u>Purchased Property Services</u>				
410 Cleaning Services				15,162.40
420 Utility Services				98,200.23
430 Repairs and Maintenance Services				35,760.40
440 Rentals				1,602.60
460 Extermination Services				1,808.73
Total Purchased Property Services				\$152,534.36
500 <u>Other Purchased Services</u>				
522 Automotive Liability Insurance				5,290.00
529 Other Insurance				100,360.00
530 Communications				20,450.20
580 Travel				25.88
Total Other Purchased Services				\$126,126.08
600 <u>Supplies</u>				
610 General Supplies	47,860.29	47,860.24		95,720.53
620 Energy				81,899.58
Total Supplies	\$47,860.29	\$47,860.24		\$177,620.11
700 <u>Property</u>				
750 Equipment – Original and Additional				265.00
760 Equipment – Replacement				1,358.61
Total Property				\$1,623.61
800 <u>Other Objects</u>				
810 Dues and Fees				176.70
Total Other Objects				\$176.70
Total 2600 Operation and Maintenance of Plant Services	\$47,860.29	\$47,860.24		\$1,630,783.42

LEA : 129546003     Pine Grove Area SD

Printed 12/5/2017 9:44:02 AM

General Fund (10)

2610 Supervision of Operation and Maintenance of Plant Services

	<u>Elementary</u>	<u>Secondary</u>	<u>Federal</u>	<u>Total</u>
<b>100 <u>Personnel Services – Salaries</u></b>				
100 Personnel Services – Salaries				101,047.79
<b>Total Personnel Services – Salaries</b>				<b>\$101,047.79</b>
<b>200 <u>Personnel Services – Employee Benefits</u></b>				
210 Group Insurance – Contracted Provider				27,884.22
220 Social Security Contributions				7,638.60
230 PSERS Retirement Contributions				26,457.24
250 Unemployment Compensation				58.89
260 Workers' Compensation				860.14
<b>Total Personnel Services – Employee Benefits</b>				<b>\$62,899.09</b>
<b>600 <u>Supplies</u></b>				
610 General Supplies	760.75	760.74		1,521.49
<b>Total Supplies</b>	<b>\$760.75</b>	<b>\$760.74</b>		<b>\$1,521.49</b>
<b>Total 2610 Supervision of Operation and Maintenance of Plant Services</b>	<b>\$760.75</b>	<b>\$760.74</b>		<b>\$165,468.37</b>



LEA : 129546003     Pine Grove Area SD

Printed 12/5/2017 9:44:02 AM

General Fund (10)

2611 Supervision of Operation and Maintenance of Plant Services – Head of Component	<u>Elementary</u>	<u>Secondary</u>	<u>Federal</u>	<u>Total</u>
<b>100 <u>Personnel Services – Salaries</u></b>				
100 Personnel Services – Salaries				101,047.79
<b>Total Personnel Services – Salaries</b>				<b>\$101,047.79</b>
<b>200 <u>Personnel Services – Employee Benefits</u></b>				
210 Group Insurance – Contracted Provider				27,884.22
220 Social Security Contributions				7,638.60
230 PSERS Retirement Contributions				26,457.24
250 Unemployment Compensation				58.89
260 Workers' Compensation				860.14
<b>Total Personnel Services – Employee Benefits</b>				<b>\$62,899.09</b>
<b>600 <u>Supplies</u></b>				
610 General Supplies	504.56	504.56		1,009.12
<b>Total Supplies</b>	<b>\$504.56</b>	<b>\$504.56</b>		<b>\$1,009.12</b>
<b>Total 2611 Supervision of Operation and Maintenance of Plant Services – Head of Component</b>	<b>\$504.56</b>	<b>\$504.56</b>		<b>\$164,956.00</b>

LEA : 129546003     Pine Grove Area SD

Printed 12/5/2017 9:44:02 AM

General Fund (10)

2619 Supervision of Operation and Maintenance of Plant Services – All Other Supervision	<u>Elementary</u>	<u>Secondary</u>	<u>Federal</u>	<u>Total</u>
600 <u>Supplies</u>				
610 General Supplies	256.19	256.18		512.37
<b>Total Supplies</b>	<b>\$256.19</b>	<b>\$256.18</b>		<b>\$512.37</b>
<b>Total 2619 Supervision of Operation and Maintenance of Plant Services – All Other Supervision</b>	<b>\$256.19</b>	<b>\$256.18</b>		<b>\$512.37</b>

LEA : 129546003     Pine Grove Area SD

Printed 12/5/2017 9:44:02 AM

General Fund (10)				
2620 Operation of Buildings Services	<u>Elementary</u>	<u>Secondary</u>	<u>Federal</u>	<u>Total</u>
100 <u>Personnel Services – Salaries</u>				
100 Personnel Services – Salaries				535,539.78
Total Personnel Services – Salaries				\$535,539.78
200 <u>Personnel Services – Employee Benefits</u>				
210 Group Insurance – Contracted Provider				133,703.54
220 Social Security Contributions				43,371.77
230 PSERS Retirement Contributions				140,134.09
250 Unemployment Compensation				791.98
260 Workers' Compensation				4,850.56
Total Personnel Services – Employee Benefits				\$322,851.94
300 <u>Purchased Professional and Technical Services</u>				
340 Technical Services				5,125.00
Total Purchased Professional and Technical Services				\$5,125.00
400 <u>Purchased Property Services</u>				
410 Cleaning Services				14,662.40
420 Utility Services				98,200.23
430 Repairs and Maintenance Services				28,285.05
440 Rentals				1,393.60
460 Extermination Services				1,808.73
Total Purchased Property Services				\$144,350.01
500 <u>Other Purchased Services</u>				
529 Other Insurance				100,360.00
530 Communications				20,450.20
Total Other Purchased Services				\$120,810.20
600 <u>Supplies</u>				
610 General Supplies	42,132.89	42,132.86		84,265.75
620 Energy				78,586.38
Total Supplies	\$42,132.89	\$42,132.86		\$162,852.13
700 <u>Property</u>				
760 Equipment – Replacement				1,358.61
Total Property				\$1,358.61
Total 2620 Operation of Buildings Services	\$42,132.89	\$42,132.86		\$1,292,887.67

LEA : 129546003     Pine Grove Area SD

Printed 12/5/2017 9:44:02 AM

General Fund (10)				
2630 Care and Upkeep of Grounds Services	<u>Elementary</u>	<u>Secondary</u>	<u>Federal</u>	<u>Total</u>
100 <u>Personnel Services – Salaries</u>				
100 Personnel Services – Salaries				96,094.61
Total Personnel Services – Salaries				\$96,094.61
200 <u>Personnel Services – Employee Benefits</u>				
210 Group Insurance – Contracted Provider				15,337.65
220 Social Security Contributions				7,401.68
230 PSERS Retirement Contributions				24,852.13
250 Unemployment Compensation				60.27
260 Workers' Compensation				821.52
Total Personnel Services – Employee Benefits				\$48,473.25
300 <u>Purchased Professional and Technical Services</u>				
324 Professional Educational Services – Employee Training and Development Services				171.10
340 Technical Services				500.00
Total Purchased Professional and Technical Services				\$671.10
400 <u>Purchased Property Services</u>				
410 Cleaning Services				500.00
430 Repairs and Maintenance Services				821.19
440 Rentals				209.00
Total Purchased Property Services				\$1,530.19
500 <u>Other Purchased Services</u>				
580 Travel				25.88
Total Other Purchased Services				\$25.88
600 <u>Supplies</u>				
610 General Supplies	3,541.63	3,541.62		7,083.25
620 Energy				1,288.85
Total Supplies	\$3,541.63	\$3,541.62		\$8,372.10
700 <u>Property</u>				
750 Equipment – Original and Additional				265.00
Total Property				\$265.00
800 <u>Other Objects</u>				
810 Dues and Fees				176.70
Total Other Objects				\$176.70
Total 2630 Care and Upkeep of Grounds Services	\$3,541.63	\$3,541.62		\$155,608.83

LEA : 129546003     Pine Grove Area SD

Printed 12/5/2017 9:44:02 AM

General Fund (10)				
2650 Vehicle Operation and Maintenance Services (Other Than Student Transportation Vehicles)	<u>Elementary</u>	<u>Secondary</u>	<u>Federal</u>	<u>Total</u>
400 <u>Purchased Property Services</u>				
430 Repairs and Maintenance Services				2,150.16
<b>Total Purchased Property Services</b>				<b>\$2,150.16</b>
500 <u>Other Purchased Services</u>				
522 Automotive Liability Insurance				5,290.00
<b>Total Other Purchased Services</b>				<b>\$5,290.00</b>
600 <u>Supplies</u>				
610 General Supplies	1,425.02	1,425.02		2,850.04
620 Energy				2,024.35
<b>Total Supplies</b>	<b>\$1,425.02</b>	<b>\$1,425.02</b>		<b>\$4,874.39</b>
<b>Total 2650 Vehicle Operation and Maintenance Services (Other Than Student Transportation Vehicles)</b>	<b>\$1,425.02</b>	<b>\$1,425.02</b>		<b>\$12,314.55</b>

LEA : 129546003     Pine Grove Area SD

Printed 12/5/2017 9:44:02 AM

General Fund (10)

2660 Safety and Security Services	<u>Elementary</u>	<u>Secondary</u>	<u>Federal</u>	<u>Total</u>
400 <u>Purchased Property Services</u>				
430 Repairs and Maintenance Services				4,504.00
<b>Total Purchased Property Services</b>				<b>\$4,504.00</b>
<b>Total 2660 Safety and Security Services</b>				<b>\$4,504.00</b>

LEA : 129546003     Pine Grove Area SD

Printed 12/5/2017 9:44:02 AM

General Fund (10)				
2700 Student Transportation Services	<u>Elementary</u>	<u>Secondary</u>	<u>Federal</u>	<u>Total</u>
100 <u>Personnel Services – Salaries</u>				
100 Personnel Services – Salaries				55,122.51
Total Personnel Services – Salaries				\$55,122.51
200 <u>Personnel Services – Employee Benefits</u>				
210 Group Insurance – Contracted Provider				969.24
220 Social Security Contributions				4,229.57
230 PSERS Retirement Contributions				13,431.77
250 Unemployment Compensation				69.19
260 Workers' Compensation				464.54
Total Personnel Services – Employee Benefits				\$19,164.31
500 <u>Other Purchased Services</u>				
513 Contracted Carriers				1,197,073.23
516 Student Transportation Services From the IU				11,650.59
Total Other Purchased Services				\$1,208,723.82
Total 2700 Student Transportation Services				\$1,283,010.64

LEA : 129546003     Pine Grove Area SD

Printed 12/5/2017 9:44:02 AM

General Fund (10)				
2720 Vehicle Operation Services				
	<u>Elementary</u>	<u>Secondary</u>	<u>Federal</u>	<u>Total</u>
100 <u>Personnel Services – Salaries</u>				
100 Personnel Services – Salaries				37,081.10
Total Personnel Services – Salaries				\$37,081.10
200 <u>Personnel Services – Employee Benefits</u>				
210 Group Insurance – Contracted Provider				969.24
220 Social Security Contributions				2,836.61
230 PSERS Retirement Contributions				9,581.84
250 Unemployment Compensation				28.78
260 Workers' Compensation				311.57
Total Personnel Services – Employee Benefits				\$13,728.04
500 <u>Other Purchased Services</u>				
513 Contracted Carriers				1,183,470.52
516 Student Transportation Services From the IU				11,650.59
Total Other Purchased Services				\$1,195,121.11
Total 2720 Vehicle Operation Services				\$1,245,930.25



LEA : 129546003     Pine Grove Area SD

Printed 12/5/2017 9:44:02 AM

General Fund (10)				
2730 Monitoring Services	<u>Elementary</u>	<u>Secondary</u>	<u>Federal</u>	<u>Total</u>
100 <u>Personnel Services – Salaries</u>				
100 Personnel Services – Salaries				18,041.41
Total Personnel Services – Salaries				\$18,041.41
200 <u>Personnel Services – Employee Benefits</u>				
220 Social Security Contributions				1,392.96
230 PSERS Retirement Contributions				3,849.93
250 Unemployment Compensation				40.41
260 Workers' Compensation				152.97
Total Personnel Services – Employee Benefits				\$5,436.27
Total 2730 Monitoring Services				\$23,477.68

LEA : 129546003     Pine Grove Area SD

Printed 12/5/2017 9:44:02 AM

General Fund (10)				
2750 Nonpublic Transportation	<u>Elementary</u>	<u>Secondary</u>	<u>Federal</u>	<u>Total</u>
500 <u>Other Purchased Services</u>				
513 Contracted Carriers				13,602.71
Total Other Purchased Services				\$13,602.71
Total 2750 Nonpublic Transportation				\$13,602.71

LEA : 129546003     Pine Grove Area SD

Printed 12/5/2017 9:44:02 AM

General Fund (10)

2800 Support Services – Central	<u>Elementary</u>	<u>Secondary</u>	<u>Federal</u>	<u>Total</u>
100 <u>Personnel Services – Salaries</u>				
100 Personnel Services – Salaries				98,593.08
<b>Total Personnel Services – Salaries</b>				<b>\$98,593.08</b>
200 <u>Personnel Services – Employee Benefits</u>				
210 Group Insurance – Contracted Provider				170.00
220 Social Security Contributions				7,474.72
250 Unemployment Compensation				84.30
260 Workers' Compensation				829.93
<b>Total Personnel Services – Employee Benefits</b>				<b>\$8,558.95</b>
300 <u>Purchased Professional and Technical Services</u>				
324 Professional Educational Services – Employee Training and Development Services				310.00
<b>Total Purchased Professional and Technical Services</b>				<b>\$310.00</b>
500 <u>Other Purchased Services</u>				
580 Travel				128.20
<b>Total Other Purchased Services</b>				<b>\$128.20</b>
600 <u>Supplies</u>				
610 General Supplies				199.00
<b>Total Supplies</b>				<b>\$199.00</b>
<b>Total 2800 Support Services – Central</b>				<b>\$107,789.23</b>

LEA : 129546003     Pine Grove Area SD

Printed 12/5/2017 9:44:02 AM

General Fund (10)				
2820 Information Services	<u>Elementary</u>	<u>Secondary</u>	<u>Federal</u>	<u>Total</u>
600 <u>Supplies</u>				
610 General Supplies				199.00
Total Supplies				\$199.00
Total 2820 Information Services				\$199.00

LEA : 129546003     Pine Grove Area SD

Printed 12/5/2017 9:44:02 AM

General Fund (10)

2829 Other Information Services

Elementary

Secondary

Federal

Total

600 Supplies

610 General Supplies

199.00

Total Supplies				\$199.00
Total 2829 Other Information Services				\$199.00

LEA : 129546003     Pine Grove Area SD

Printed 12/5/2017 9:44:02 AM

<b>General Fund (10)</b>				
<b>2830 Staff Services</b>	<b><u>Elementary</u></b>	<b><u>Secondary</u></b>	<b><u>Federal</u></b>	<b><u>Total</u></b>
<b>100 <u>Personnel Services – Salaries</u></b>				
100 Personnel Services – Salaries				98,593.08
<b>Total Personnel Services – Salaries</b>				<b>\$98,593.08</b>
<b>200 <u>Personnel Services – Employee Benefits</u></b>				
210 Group Insurance – Contracted Provider				170.00
220 Social Security Contributions				7,474.72
250 Unemployment Compensation				84.30
260 Workers' Compensation				829.93
<b>Total Personnel Services – Employee Benefits</b>				<b>\$8,558.95</b>
<b>300 <u>Purchased Professional and Technical Services</u></b>				
324 Professional Educational Services – Employee Training and Development Services				310.00
<b>Total Purchased Professional and Technical Services</b>				<b>\$310.00</b>
<b>500 <u>Other Purchased Services</u></b>				
580 Travel				128.20
<b>Total Other Purchased Services</b>				<b>\$128.20</b>
<b>Total 2830 Staff Services</b>				<b>\$107,590.23</b>

LEA : 129546003     Pine Grove Area SD

Printed 12/5/2017 9:44:02 AM

General Fund (10)

2836 Staff Development Services – Non-Instructional, Non-Certified Staff Only	<u>Elementary</u>	<u>Secondary</u>	<u>Federal</u>	<u>Total</u>
300 <u>Purchased Professional and Technical Services</u>				
324 Professional Educational Services – Employee Training and Development Services				310.00
Total Purchased Professional and Technical Services				\$310.00
500 <u>Other Purchased Services</u>				
580 Travel				128.20
Total Other Purchased Services				\$128.20
Total 2836 Staff Development Services – Non-Instructional, Non-Certified Staff Only				\$438.20

LEA : 129546003     Pine Grove Area SD

Printed 12/5/2017 9:44:02 AM

General Fund (10)

2839 Other Staff Services

Elementary                      Secondary                      Federal                      Total

100 <u>Personnel Services – Salaries</u>				
100 Personnel Services – Salaries				98,593.08
<b>Total Personnel Services – Salaries</b>				<b>\$98,593.08</b>
200 <u>Personnel Services – Employee Benefits</u>				
210 Group Insurance – Contracted Provider				170.00
220 Social Security Contributions				7,474.72
250 Unemployment Compensation				84.30
260 Workers' Compensation				829.93
<b>Total Personnel Services – Employee Benefits</b>				<b>\$8,558.95</b>
<b>Total 2839 Other Staff Services</b>				<b>\$107,152.03</b>



LEA : 129546003 Pine Grove Area SD

Printed 12/5/2017 9:44:02 AM

General Fund (10)

2900 Other Support Services	<u>Elementary</u>	<u>Secondary</u>	<u>Federal</u>	<u>Total</u>
300 <u>Purchased Professional and Technical Services</u>				
322 Professional Educational Services – lus				93,170.62
Total Purchased Professional and Technical Services				\$93,170.62
400 <u>Purchased Property Services</u>				
440 Rentals				3,123.30
Total Purchased Property Services				\$3,123.30
Total 2900 Other Support Services				\$96,293.92

LEA : 129546003     Pine Grove Area SD

Printed 12/5/2017 9:44:02 AM

General Fund (10)

2910 Support Services Not Listed Elsewhere In the 2000 Series

Elementary                      Secondary                      Federal                      Total

300 Purchased Professional and Technical Services

322 Professional Educational Services – lus 93,170.62

**Total Purchased Professional and Technical Services \$93,170.62**

400 Purchased Property Services

440 Rentals 3,123.30

**Total Purchased Property Services \$3,123.30**

**Total 2910 Support Services Not Listed Elsewhere In the 2000 Series \$96,293.92**

LEA : 129546003 Pine Grove Area SD

Printed 12/5/2017 9:44:04 AM

General Fund (10)

3000 Operation of Non-Instructional Services		Total
100	<u>Personnel Services – Salaries</u>	
100	Personnel Services – Salaries	251,450.20
Total Personnel Services – Salaries		\$251,450.20
200	<u>Personnel Services – Employee Benefits</u>	
210	Group Insurance – Contracted Provider	9,962.46
220	Social Security Contributions	19,181.92
230	PSERS Retirement Contributions	59,277.05
250	Unemployment Compensation	353.34
260	Workers’ Compensation	2,116.67
Total Personnel Services – Employee Benefits		\$90,891.44
300	<u>Purchased Professional and Technical Services</u>	
330	Other Professional Services	36,819.24
390	Other Purchased Professional and Technical Services	22,573.75
Total Purchased Professional and Technical Services		\$59,392.99
400	<u>Purchased Property Services</u>	
420	Utility Services	123,852.85
430	Repairs and Maintenance Services	5,409.50
440	Rentals	2,260.00
Total Purchased Property Services		\$131,522.35
500	<u>Other Purchased Services</u>	
550	Printing and Binding	305.67
580	Travel	5,951.75
Total Other Purchased Services		\$6,257.42
600	<u>Supplies</u>	
610	General Supplies	21,285.94
620	Energy	292.23
Total Supplies		\$21,578.17
700	<u>Property</u>	
760	Equipment – Replacement	10,434.62
Total Property		\$10,434.62
800	<u>Other Objects</u>	
810	Dues and Fees	8,533.72
890	Miscellaneous Expenditures	5,715.00
Total Other Objects		\$14,248.72
Total 3000 Operation of Non-Instructional Services		\$585,775.91

LEA : 129546003     Pine Grove Area SD

Printed 12/5/2017 9:44:04 AM

General Fund (10)				
3200 Student Activities				
	<u>Elementary</u>	<u>Secondary</u>	<u>Federal</u>	<u>Total</u>
100 <u>Personnel Services – Salaries</u>				
100 Personnel Services – Salaries				251,450.20
Total Personnel Services – Salaries				\$251,450.20
200 <u>Personnel Services – Employee Benefits</u>				
210 Group Insurance – Contracted Provider				9,962.46
220 Social Security Contributions				19,181.92
230 PSERS Retirement Contributions				59,277.05
250 Unemployment Compensation				353.34
260 Workers' Compensation				2,116.67
Total Personnel Services – Employee Benefits				\$90,891.44
300 <u>Purchased Professional and Technical Services</u>				
330 Other Professional Services				36,819.24
390 Other Purchased Professional and Technical Services				22,573.75
Total Purchased Professional and Technical Services				\$59,392.99
400 <u>Purchased Property Services</u>				
420 Utility Services				123,852.85
430 Repairs and Maintenance Services				5,409.50
440 Rentals				2,260.00
Total Purchased Property Services				\$131,522.35
500 <u>Other Purchased Services</u>				
550 Printing and Binding				305.67
580 Travel				5,951.75
Total Other Purchased Services				\$6,257.42
600 <u>Supplies</u>				
610 General Supplies				21,285.94
620 Energy				292.23
Total Supplies				\$21,578.17
700 <u>Property</u>				
760 Equipment – Replacement				10,434.62
Total Property				\$10,434.62
800 <u>Other Objects</u>				
810 Dues and Fees				8,533.72
890 Miscellaneous Expenditures				5,715.00
Total Other Objects				\$14,248.72
Total 3200 Student Activities				\$585,775.91

LEA : 129546003     Pine Grove Area SD

Printed 12/5/2017 9:44:05 AM

General Fund (10)	
5000 Other Expenditures and Financing Uses	<u>Total</u>
800 <u>Other Objects</u>	
830 Interest	323,623.36
880 Refunds of Prior Years' Receipts	7,136.00
Total Other Objects	\$330,759.36
900 <u>Other Uses of Funds</u>	
910 Redemption of Principal	1,390,000.00
Total Other Uses of Funds	\$1,390,000.00
Total 5000 Other Expenditures and Financing Uses	\$1,720,759.36

LEA : 129546003     Pine Grove Area SD

Printed 12/5/2017 9:44:05 AM

General Fund (10)

5100 Debt Service / Other Expenditures and Financing Uses	<u>Elementary</u>	<u>Secondary</u>	<u>Federal</u>	<u>Total</u>
800 <u>Other Objects</u>				
830 Interest				323,623.36
880 Refunds of Prior Years' Receipts				7,136.00
Total Other Objects				\$330,759.36
900 <u>Other Uses of Funds</u>				
910 Redemption of Principal				1,390,000.00
Total Other Uses of Funds				\$1,390,000.00
Total 5100 Debt Service / Other Expenditures and Financing Uses				\$1,720,759.36

LEA : 129546003     Pine Grove Area SD

Printed 12/5/2017 9:44:05 AM

General Fund (10)

5110 Debt Service	<u>Elementary</u>	<u>Secondary</u>	<u>Federal</u>	<u>Total</u>
800 <u>Other Objects</u>				
830 Interest				323,623.36
Total Other Objects				\$323,623.36
900 <u>Other Uses of Funds</u>				
910 Redemption of Principal				1,390,000.00
Total Other Uses of Funds				\$1,390,000.00
Total 5110 Debt Service				\$1,713,623.36

LEA : 129546003     Pine Grove Area SD

Printed 12/5/2017 9:44:05 AM

General Fund (10)

5130 Refund of Prior Year Revenues / Receipts	<u>Elementary</u>	<u>Secondary</u>	<u>Federal</u>	<u>Total</u>
800 <u>Other Objects</u>				
880 Refunds of Prior Years' Receipts				7,136.00
Total Other Objects				\$7,136.00
Total 5130 Refund of Prior Year Revenues / Receipts				\$7,136.00



LEA : 129546003     Pine Grove Area SD

Printed 12/5/2017 9:44:05 AM

Other Capital Projects Fund (39)

<b>4000 Facilities Acquisition, Construction and Improvement Services</b>		<b><u>Total</u></b>
<b>300 <u>Purchased Professional and Technical Services</u></b>		
330 Other Professional Services	18,961.00	
<b>Total Purchased Professional and Technical Services</b>		<b>\$18,961.00</b>
<b>400 <u>Purchased Property Services</u></b>		
440 Rentals	2,863.00	
450 Construction Services	130,161.00	
<b>Total Purchased Property Services</b>		<b>\$133,024.00</b>
<b>600 <u>Supplies</u></b>		
610 General Supplies	88.00	
<b>Total Supplies</b>		<b>\$88.00</b>
<b>700 <u>Property</u></b>		
710 Land and Improvements	22,875.00	
750 Equipment – Original and Additional	304,141.00	
760 Equipment – Replacement	49,955.63	
<b>Total Property</b>		<b>\$376,971.63</b>
<b>Total 4000 Facilities Acquisition, Construction and Improvement Services</b>		<b>\$529,044.63</b>

LEA : 129546003     Pine Grove Area SD

Printed 12/5/2017 9:44:05 AM

Other Capital Projects Fund (39)

4100 Site Acquisition Services – Original and Additional

Elementary

Secondary

Federal

Total

300 Purchased Professional and Technical Services

330 Other Professional Services

18,961.00

Total Purchased Professional and Technical Services

\$18,961.00

400 Purchased Property Services

440 Rentals

2,863.00

450 Construction Services

130,161.00

Total Purchased Property Services

\$133,024.00

600 Supplies

610 General Supplies

88.00

Total Supplies

\$88.00

700 Property

710 Land and Improvements

22,875.00

750 Equipment – Original and Additional

304,141.00

760 Equipment – Replacement

49,955.63

Total Property

\$376,971.63

Total 4100 Site Acquisition Services – Original and Additional

\$529,044.63

LEA : 129546003 Pine Grove Area SD

Printed 12/5/2017 9:44:09 AM

	<u>General Fund(10)</u>	<u>Public Purpose Trust(27)</u>	<u>Other Compt Approved</u> <u>(28)</u>	<u>Athletic / Activity(29)</u>	<u>Capital Reserve (690.</u> <u>1850)(31)</u>
<b>1000 Instruction</b>					
1100 Regular Programs - Elementary / Secondary	9,381,297.64				
1200 Special Programs - Elementary / Secondary	2,792,460.83				
1300 Vocational Education	503,098.00				
1400 Other Instructional Programs - Elementary / Secondary	182,625.59				
1500 Nonpublic School Programs	1,491.00				
<b>Total Instruction</b>	<b>\$12,860,973.06</b>				
<b>2000 Support Services</b>					
2100 Support Services - Students	740,566.12				
2200 Support Services - Instructional Staff	619,011.85				
2300 Support Services - Administration	1,442,589.37				
2400 Support Services - Pupil Health	220,617.13				
2500 Support Services - Business	320,362.39				
2600 Operation and Maintenance of Plant Services	1,630,783.42				
2700 Student Transportation Services	1,283,010.64				
2800 Support Services - Central	107,789.23				
2900 Other Support Services	96,293.92				
<b>Total Support Services</b>	<b>\$6,461,024.07</b>				
<b>3000 Operation of Non-Instructional Services</b>					
3200 Student Activities	585,775.91				
<b>Total Operation of Non-Instructional Services</b>	<b>\$585,775.91</b>				
<b>4000 Facilities Acquisition, Construction and Improvement Services</b>					
4100 Site Acquisition Services - Original and Additional					
<b>Total Facilities Acquisition, Construction and Improvement Services</b>					
<b>5000 Other Expenditures and Financing Uses</b>					
5100 Debt Service / Other Expenditures and Financing Uses	1,720,759.36				
<b>Total Other Expenditures and Financing Uses</b>	<b>\$1,720,759.36</b>				
<b>TOTAL ACTUAL EXPENDITURES &amp; OTHER FINANCING USES</b>	<b>\$21,628,532.40</b>				

LEA : 129546003     Pine Grove Area SD

Printed 12/5/2017 9:44:09 AM

	<u>Capital Reserve (1431)(32)</u>	<u>Other Capital Projects Fund(39)</u>	<u>Debt Service(40)</u>	<u>Permanent(90)</u>	<u>Total</u>
<b>1000 <u>Instruction</u></b>					
1100 Regular Programs - Elementary / Secondary					9,381,297.64
1200 Special Programs - Elementary / Secondary					2,792,460.83
1300 Vocational Education					503,098.00
1400 Other Instructional Programs - Elementary / Secondary					182,625.59
1500 Nonpublic School Programs					1,491.00
<b>Total Instruction</b>					<b>\$12,860,973.06</b>
<b>2000 <u>Support Services</u></b>					
2100 Support Services - Students					740,566.12
2200 Support Services - Instructional Staff					619,011.85
2300 Support Services - Administration					1,442,589.37
2400 Support Services - Pupil Health					220,617.13
2500 Support Services - Business					320,362.39
2600 Operation and Maintenance of Plant Services					1,630,783.42
2700 Student Transportation Services					1,283,010.64
2800 Support Services - Central					107,789.23
2900 Other Support Services					96,293.92
<b>Total Support Services</b>					<b>\$6,461,024.07</b>
<b>3000 <u>Operation of Non-Instructional Services</u></b>					
3200 Student Activities					585,775.91
<b>Total Operation of Non-Instructional Services</b>					<b>\$585,775.91</b>
<b>4000 <u>Facilities Acquisition, Construction and Improvement Services</u></b>					
4100 Site Acquisition Services - Original and Additional		529,044.63			529,044.63
<b>Total Facilities Acquisition, Construction and Improvement Services</b>		<b>\$529,044.63</b>			<b>\$529,044.63</b>
<b>5000 <u>Other Expenditures and Financing Uses</u></b>					
5100 Debt Service / Other Expenditures and Financing Uses					1,720,759.36
<b>Total Other Expenditures and Financing Uses</b>					<b>\$1,720,759.36</b>
<b>TOTAL ACTUAL EXPENDITURES &amp; OTHER FINANCING USES</b>		<b>\$529,044.63</b>			<b>\$22,157,577.03</b>

LEA : 129546003     Pine Grove Area SD

Printed 12/5/2017 9:44:13 AM

PSERS Salary Data (Salary Data should relate to the General Fund only)

Amount	Description	Amount
	Total Salary Base for salaries subject to PSERS withholding	9,765,043.00
	Total Federally Funded salaries subject to PSERS withholding	405,942.00

Title I Expenditure Data

Amount	Description	Amount
	Expenditures Funded with Current Title I Funds	280,166.00
	Expenditures Funded with Carry over Title I Funds	
Total	Title I Expenditure Data	\$280,166.00

Title I ARRA Amount

Amount	Description	Amount
	Portion of Total Title I Expenditures funded with ARRA Title I	

Benefits for Staff Relative to Collective Bargaining Agreements

	OBJECT	COVERED	NOT COVERED	TOTAL
10 General Fund	No Self Insurance data to report			
	211 Medical Insurance	2,069,932.00	108,944.00	2,178,876.00
	212 Dental Insurance	109,096.00	4,546.00	113,642.00
	215 Eye Care Insurance	24,686.00	494.00	25,180.00
	216 Prescription Insurance			
	271 Self-Insurance Medical Benefits			
	272 Self-Insurance Dental Benefits			
	275 Self-Insurance Eye Care Benefits			
	276 Self-Insurance Prescription Benefits			
	FUND TOTAL	\$2,203,714.00	\$113,984.00	\$2,317,698.00
50 Enterprise Fund	No Self Insurance data to report			
	211 Medical Insurance			
	212 Dental Insurance			
	215 Eye Care Insurance			
	216 Prescription Insurance			
	271 Self-Insurance Medical Benefits			
	272 Self-Insurance Dental Benefits			
	275 Self-Insurance Eye Care Benefits			
	276 Self-Insurance Prescription Benefits			
	FUND TOTAL			
60 Internal Service Fund	No Self Insurance data to report			
	211 Medical Insurance			
	212 Dental Insurance			
	215 Eye Care Insurance			
	216 Prescription Insurance			
	271 Self-Insurance Medical Benefits			
	272 Self-Insurance Dental Benefits			
	275 Self-Insurance Eye Care Benefits			
	276 Self-Insurance Prescription Benefits			
	FUND TOTAL			
Total of All Funds		\$2,203,714.00	\$113,984.00	\$2,317,698.00

LEA : 129546003 Pine Grove Area SD

Printed 12/5/2017 9:44:15 AM

Function	Special Education (Prior Year)	Nonspecial Education (Prior Year)	Total (Prior Year)	Special Education (Current Year)	Nonspecial Education (Current Year)	Total (Current Year)
2120 Guidance Services	49,516.88	332,535.55	382,052.43	54,364.00	332,144.49	386,508.49
2140 Psychological Services	208,182.59		208,182.59	219,457.82		219,457.82
2150 Speech Pathology and Audiology Services						
2160 Social Work Services	31,934.63	28,640.55	60,575.18	49,010.00		49,010.00
2260 Instruction and Curriculum Development Services	232,219.67	11,677.08	243,896.75	188,343.00	18,351.24	206,694.24
2350 Legal and Accounting Services		113,592.34	113,592.34		86,244.00	86,244.00
2420 Medical Services	20,933.43	899.04	21,832.47	18,602.00	2,021.00	20,623.00
2440 Nursing Services		199,326.57	199,326.57		199,915.00	199,915.00
2700 Student Transportation Services	29,205.73	1,134,563.56	1,163,769.29	20,044.00	1,094,250.00	1,114,294.00
Total	\$571,992.93	\$1,821,234.69	\$2,393,227.62	\$549,820.82	\$1,732,925.73	\$2,282,746.55

LEA : 129546003 Pine Grove Area SD

Printed 12/5/2017 9:44:15 AM

(PRINCIPAL AMOUNTS ONLY)

**ALL GOVERNMENTAL FUND TYPES**

	Short-Term Borrowing	General Obligation Bonds/Notes	Authority Building Obligations	Other Long-Term Debt	Other Post- Employment Benefits (OPEB)	Compensated Absences	Net Pension Liability	Total
1. Debt at Beginning of Fiscal Year		15,595,000.00			1,050,546.00	278,249.00	27,944,000.00	44,867,795.00
2. Additional Debt Incurred During Year					136,061.00		4,153,000.00	4,289,061.00
3. Retirements and Repayments		1,390,000.00				28,867.00		1,418,867.00
4. Debt at End of Fiscal Year		14,205,000.00			1,186,607.00	249,382.00	32,097,000.00	47,737,989.00
5. Accreted Interest at End Of Fiscal Year								
6. Total Debt and Accreted Interest		14,205,000.00			1,186,607.00	249,382.00	32,097,000.00	47,737,989.00
7. Current Portion P&I - Due within 1 year		2,014,607.50						2,014,607.50
8. Interest Paid during current fiscal year		318,284.36						318,284.36

(PRINCIPAL AMOUNTS ONLY)

**ALL PROPRIETARY FUND TYPES**

- 1. Debt at Beginning of Fiscal Year
- 2. Additional Debt Incurred During Year
- 3. Retirements and Repayments
- 4. Debt at End of Fiscal Year
- 5. Accreted Interest at End Of Fiscal Year
- 6. Total Debt and Accreted Interest
- 7. Current Portion P&I - Due within 1 year
- 8. Interest Paid during current fiscal year



LEA : 129546003     Pine Grove Area SD

Printed 12/5/2017 9:44:15 AM

Total Principal and Interest Payments Made by Your School - All Funds

Function	Fund		Principal (910)	Principal (920)	Interest (830)	Total (Principal +Interest)	Misc Other Uses (990)
5110	10	General Fund	1,390,000.00		323,623.36	1,713,623.36	
5110	20	Special Revenue Funds					
5110	30	Capital Projects Funds					
5110	40	Debt Service Fund					
5110	90	Permanent Fund					
5120	10	General Fund					
5120	20	Special Revenue Funds					
5120	30	Capital Projects Funds					
5120	40	Debt Service Fund					
Total Debt Payments - Governmental Funds			\$1,390,000.00		\$323,623.36	\$1,713,623.36	

Function	Fund		Principal (910)	Principal (920)	Interest (830)	Total (Principal +Interest)
5110	50	Enterprise Fund				
5110	60	Internal Service Fund				
5120	50	Enterprise Fund				
5120	60	Internal Service Fund				
Total Debt Payments - Proprietary Funds						

LEA : 129546003     Pine Grove Area SD

Printed 12/5/2017 9:44:15 AM

**Bond Details**  
**Governmental Funds**

Debt Category	Debt Issue Date (MM/YYYY)	Principal Amounts Only				Current Portion Due Within One Year (Principal and Interest)	Interest Paid During Fiscal Year
		Debt at Beginning of Fiscal Year	Additions	Reductions / Repayments	Debt at End of Fiscal Year		
General Obligation Bonds/Notes – CIB	05/2015	6,555,000.00		1,035,000.00	5,520,000.00	1,410,347.50	72,624.36
General Obligation Bonds/Notes – CIB	05/2012	9,040,000.00		355,000.00	8,685,000.00	604,260.00	245,660.00
Compensated Absences		278,249.00		28,867.00	249,382.00		
Other Post-Employment Benefits (OPEB)		1,050,546.00	136,061.00		1,186,607.00		
Net Pension Liability		27,944,000.00	4,153,000.00		32,097,000.00		
<b>Totals for Debt Entered:</b>		<b>\$44,867,795.00</b>	<b>\$4,289,061.00</b>	<b>\$1,418,867.00</b>	<b>\$47,737,989.00</b>	<b>\$2,014,607.50</b>	<b>\$318,284.36</b>

LEA : 129546003     Pine Grove Area SD

**General Fund (10)**

Section 1: Tuition/Purchased Services as Reported within Expenditure Detail	Amount
Tuition Reported in General Fund Expenditures 1000-560	1,012,328.79
Purchased Services in General Fund Expenditures 1000-594 and 1000-597	59,740.00
<b>Section 1 Total</b>	<b>\$1,072,068.79</b>

Section 2: Tuition Paid to Institution Types During Fiscal Year	Tuition Paid For Nonspecial Education	Tuition Paid For Special Education	Total
1 1306 Institutions	5,252.00	87,395.00	92,647.00
2 Institutionalized Children's Programs			
3 Juveniles Incarcerated in Adult Facilities			
4 Residential Treatment Facilities			
5 Other Local Education Agencies	71,460.87		71,460.87
6 Brick and Mortar Charter Schools			
7 Cyber Charter Schools	297,971.52	46,927.40	344,898.92
8 Career and Technology Centers	543,374.00		543,374.00
9 Approved Private Schools			
10 PA Chartered Schools for the Deaf and Blind			
11 Private Residential Rehabilitative Institutions	17,701.00		17,701.00
12 Juvenile Detention Centers	1,987.00		1,987.00
13 Special Program Jointures			
14 Other Tuition Not Included Elsewhere In This Section			
<b>Section 2 Total</b>	<b>\$937,746.39</b>	<b>\$134,322.40</b>	<b>\$1,072,068.79</b>

LEA : 129546003     Pine Grove Area SD

Printed 12/5/2017 9:44:19 AM

Food Service / Cafeteria Operations Fund (51)

3000 Operation of Non-Instructional Services

Total

100 <u>Personnel Services – Salaries</u>	
100 Personnel Services – Salaries	101,894.86
<b>Total Personnel Services – Salaries</b>	<b>\$101,894.86</b>
200 <u>Personnel Services – Employee Benefits</u>	
210 Group Insurance – Contracted Provider	1,858.03
220 Social Security Contributions	7,778.12
230 PSERS Retirement Contributions	16,946.02
250 Unemployment Compensation	18,572.07
260 Workers’ Compensation	855.98
<b>Total Personnel Services – Employee Benefits</b>	<b>\$46,010.22</b>
400 <u>Purchased Property Services</u>	
430 Repairs and Maintenance Services	1,096.93
460 Extermination Services	3,285.17
<b>Total Purchased Property Services</b>	<b>\$4,382.10</b>
500 <u>Other Purchased Services</u>	
570 Food Service Management	702,115.70
<b>Total Other Purchased Services</b>	<b>\$702,115.70</b>
600 <u>Supplies</u>	
610 General Supplies	5,196.09
630 Food	29,149.91
<b>Total Supplies</b>	<b>\$34,346.00</b>
700 <u>Property</u>	
740 Depreciation	1,415.57
760 Equipment – Replacement	160.86
<b>Total Property</b>	<b>\$1,576.43</b>
800 <u>Other Objects</u>	
810 Dues and Fees	564.20
<b>Total Other Objects</b>	<b>\$564.20</b>
<b>Total 3000 Operation of Non-Instructional Services</b>	<b>\$890,889.51</b>

LEA : 129546003     Pine Grove Area SD

Printed 12/5/2017 9:44:19 AM

Food Service / Cafeteria Operations Fund (51)

3100 Food Services	Elementary	Secondary	Federal	Total
100 <u>Personnel Services – Salaries</u>				
100 Personnel Services – Salaries				101,894.86
<b>Total Personnel Services – Salaries</b>				<b>\$101,894.86</b>
200 <u>Personnel Services – Employee Benefits</u>				
210 Group Insurance – Contracted Provider				1,858.03
220 Social Security Contributions				7,778.12
230 PSERS Retirement Contributions				16,946.02
250 Unemployment Compensation				18,572.07
260 Workers' Compensation				855.98
<b>Total Personnel Services – Employee Benefits</b>				<b>\$46,010.22</b>
400 <u>Purchased Property Services</u>				
430 Repairs and Maintenance Services				1,096.93
460 Extermination Services				3,285.17
<b>Total Purchased Property Services</b>				<b>\$4,382.10</b>
500 <u>Other Purchased Services</u>				
570 Food Service Management				702,115.70
<b>Total Other Purchased Services</b>				<b>\$702,115.70</b>
600 <u>Supplies</u>				
610 General Supplies				5,196.09
630 Food				29,149.91
<b>Total Supplies</b>				<b>\$34,346.00</b>
700 <u>Property</u>				
740 Depreciation				1,415.57
760 Equipment – Replacement				160.86
<b>Total Property</b>				<b>\$1,576.43</b>
800 <u>Other Objects</u>				
810 Dues and Fees				564.20
<b>Total Other Objects</b>				<b>\$564.20</b>
<b>Total 3100 Food Services</b>				<b>\$890,889.51</b>

	<u>Food Service(51)</u>	<u>Child Care Operations(52)</u>	<u>Other Enterprise(58)</u>	<u>Internal Service(60)</u>	<u>Total</u>
<b>3000 <u>Operation of Non-Instructional Services</u></b>					
3100 Food Services	890,889.51				890,889.51
<b>Total Operation of Non-Instructional Services</b>	<b>\$890,889.51</b>				<b>\$890,889.51</b>
<b>TOTAL ACTUAL EXPENDITURES &amp; OTHER FINANCING USES</b>	<b>\$890,889.51</b>				<b>\$890,889.51</b>