

LEA Name : Pine Grove Area SD
Address : 103 School St
Pine Grove , PA 17963

County : Schuylkill
AUN Number : 129546003
LEA Type : SD

Annual Financial Report

Accuracy Certification Statement

For Fiscal Year Ending

6/30/2017

Pennsylvania Department of Education

&

Office of Comptroller Operations

PDE-2056: Intermediate Unit

PDE-2057: School District, AVTS/CTC, Charter School,
and Special Program Jointure

CERTIFICATION: By signing this page I agree that the electronic data submitted is a complete and accurate statement of the financial operations and status of the local education agency for the fiscal year. It has been prepared in accordance with generally accepted accounting principles and established Commonwealth of PA reporting guidelines.



Chief School Administrator Signature

12/8/17

Date



Board Secretary Signature

12/8/17

Date

Jodie Dermo

Contact Person

jdermo@pgasd.com

Contact Person E-mail Address

(570)345-2731

Ext :350

Contact Person Telephone Number

(570)345-2790

Contact Person Fax Number

Audit Certification
Annual Financial Report:
For Fiscal Year Ending **6/30/2017**
(Pursuant to PA School Code Section 218(b))

LEA Name : Pine Grove Area SD
AUN Number : 129546003
County : Schuylkill

Audit Certification Due: 12/31/2017

This certification is applicable to the Annual Financial Report data submitted
through the Consolidated Financial Reporting System on: 12/1/17

Date

Auditing Firm: JONES & CO, P.C.
110 NORTH SECOND STREET
POTTSVILLE PA 17901

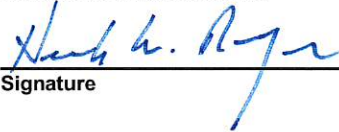
Auditor Contact Name: EDWIN H. EBLING, CPA

Auditor Phone: (570)622-5010

Auditor E-mail: jonescpa@comcast.net

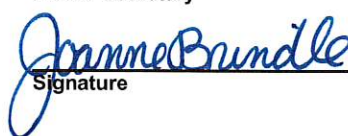
CERTIFICATION: By signing this page I agree that the financial statements of the school have been properly audited as noted above pursuant to Article XXIV, and in the auditor's professional opinion, the Annual Financial Report (PDE-2057) submitted on the date referenced is materially consistent with the audited financial statements.

Chief School Administrator


Signature

12/8/17
Date

Board Secretary


Signature

12/8/17
Date

Jodie Dermo

Contact Person

jdermo@pgasd.com

Contact Person E-mail Address

(570)345-2731

Ext :350

Contact Person Telephone Number

(570)345-2790

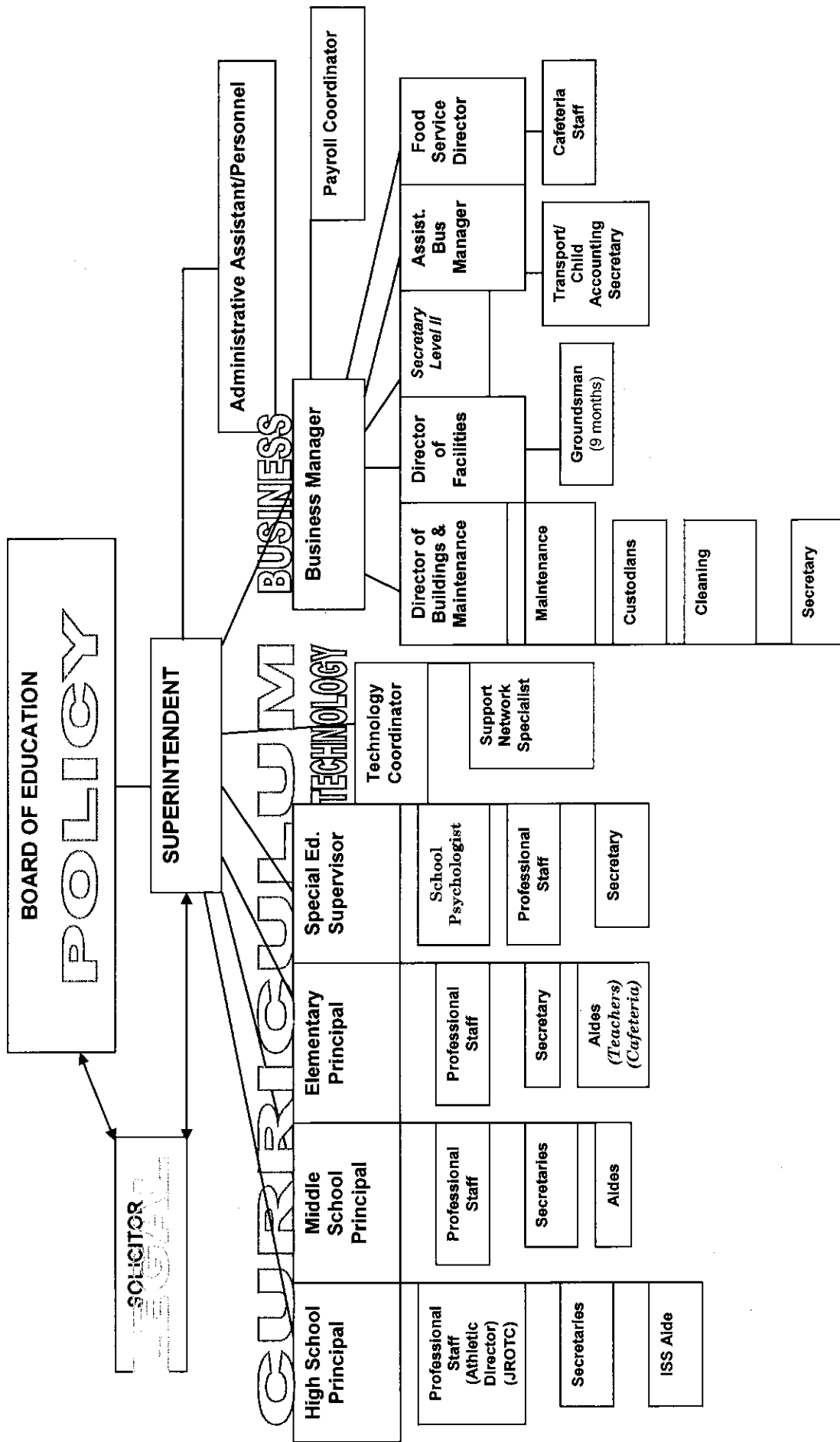
Contact Person Fax Number

PINE GROVE AREA SCHOOL DISTRICT ORGANIZATIONAL CHART

No. 008

Local Board Procedures

Organizational Chart



<u>Val Number</u>	<u>Description</u>	<u>Justification</u>
16230	<p>REP Fund 51 – Net Position - Beginning of Fiscal Year must equal Prior Year AFR, Net Position - End of Year. Justifications to this error must fully explain the situation that prompted a fund balance restatement. “Auditor Adjustment” is not a sufficient justification.</p> <p>REP Fund 51 – Net Position - Beginning of Fiscal Year: \$319,459.00 REP Fund 51, Prior Year AFR, Net Position - End of Year: \$309,682.00</p>	<p>Prior Year AFR Net Position was \$319,459. This amount consisted of \$309.906 unrestricted and \$9,553 invested in capital assets, net of related debt. It appears that the CFRS system is not pulling the total of both net position ampunts from prior year.</p>
50430	<p>SESS - 2160 Social Work Services: SESS Schedule amounts for Special Education vary from prior year by 40% or more. Correct the data or enter a justification.</p> <p>SESS Schedule 2160: \$110,549.00 Prior Year SESS Schedule 2160: \$49,010.00</p>	<p>Social work services increased by more than 40% over prior year due to an increased need in social work services by our students. Amounts have been reviewed and verified to be correct.</p>
50440	<p>SESS - 2260 Instruction and Curriculum Development Services: SESS Schedule amounts for Special Education vary from prior year by 40% or more. Correct the data or enter a justification.</p> <p>SESS Schedule 2260: \$305,897.67 Prior Year SESS Schedule 2260: \$188,343.00</p>	<p>Expenditures went up by more than 40% over prior year because we hired a Curriculum Director and introduced curriculum development into the district, something we did not do in prior year. These amounts have been reviewed and verified to be accurate.</p>
50460	<p>SESS - 2420 Medical Services: SESS Schedule amounts for Special Education vary from prior year by 40% or more. Correct the data or enter a justification.</p> <p>SESS Schedule 2420: \$1,490.00 Prior Year SESS Schedule 2420: \$18,602.00</p>	<p>Medical service expenditures for Special Education increased by more than 40% over prior year due to an increased need for medical services for our Special Need students. Amounts have been reviewed and verified to be correct.</p>
50480	<p>SESS - 2700 Student Transportation Services: SESS Schedule amounts for Special Education vary from prior year by 40% or more. Correct the data or enter a justification.</p> <p>SESS Schedule 2700: \$36,364.00 Prior Year SESS Schedule 2700: \$20,044.00</p>	<p>Student transportation services for Special Education increase by more than 40% over prior year due to an increased student transportation need for our Special Needs students. Amounts have been reviewed and verified to be correct.</p>

LEA : 129546003 Pine Grove Area SD

Printed 1/24/2018 12:48:27 PM

Amounts Expressed in Whole Dollars		<u>General Fund</u> <u>(10)</u>	<u>Public Purpose Trust</u> <u>(27)</u>	<u>Other Compt Approved</u> <u>(28)</u>	<u>Athletic / Activity</u> <u>(29)</u>	<u>Capital Reserve (690.</u> <u>1850)</u> <u>(31)</u>
Assets And Deferred Outflows Of Resources						
Assets						
0100	Cash and Cash Equivalents	5,276,717				
0110	Investments	3,013,605				
0120	Taxes Receivable	187,171				
0130	Due From Other Funds	107,801				
0141	Due From Other Governments					
0142	State Revenue Receivable	1,056,271				
0143	Federal Revenue Receivable	825,843				
0145	Other Intergovernmental Revenue Receivable	393,156				
0146	Due from Primary Government					
0147	Due from Component Unit					
0150	Other Receivables	107,986				
0170	Inventories	30,253				
0180	Prepaid Expenses (Expenditures)	116,407				
0190	Other Current Assets					
Total Assets		\$11,115,210				
0910	Deferred Outflows of Resources					
Total Assets And Deferred Outflows Of Resources		\$11,115,210				

LEA : 129546003 Pine Grove Area SD

Printed 1/24/2018 12:48:27 PM

Amounts Expressed in Whole Dollars		<u>Capital Reserve (1431)</u> <u>(32)</u>	<u>Other Capital Projects</u> <u>Fund</u> <u>(39)</u>	<u>Debt Service</u> <u>(40)</u>	<u>Permanent</u> <u>(90)</u>	<u>Total Governmental</u> <u>Funds</u>
Assets And Deferred Outflows Of Resources						
Assets						
0100	Cash and Cash Equivalents		818,288			6,095,005
0110	Investments		2,402			3,016,007
0120	Taxes Receivable					187,171
0130	Due From Other Funds					107,801
0141	Due From Other Governments					
0142	State Revenue Receivable					1,056,271
0143	Federal Revenue Receivable					825,843
0145	Other Intergovernmental Revenue Receivable					393,156
0146	Due from Primary Government					
0147	Due from Component Unit					
0150	Other Receivables					107,986
0170	Inventories					30,253
0180	Prepaid Expenses (Expenditures)					116,407
0190	Other Current Assets					
Total Assets			\$820,690			\$11,935,900
0910	Deferred Outflows of Resources					
Total Assets And Deferred Outflows Of Resources			\$820,690			\$11,935,900

LEA : 129546003 Pine Grove Area SD

Printed 1/24/2018 12:48:27 PM

Amounts Expressed in Whole Dollars	<u>General Fund</u> <u>(10)</u>	<u>Public Purpose Trust</u> <u>(27)</u>	<u>Other Compt Approved</u> <u>(28)</u>	<u>Athletic / Activity</u> <u>(29)</u>	<u>Capital Reserve (690.</u> <u>1850)</u> <u>(31)</u>
Liabilities And Deferred Inflows Of Resources And Fund Balances					
Liabilities					
0400 Due to Other Funds	282,733				
0411 Due to Other Governments					
0412 Due to Primary Government					
0413 Due to Component Unit					
0420 Accounts Payable	1,376,821				
0430 Contracts Payable					
0440 Current Portion of Long-Term Debt					
0450 Short-Term Payables					
0461 Accrued Salaries and Benefits	893,684				
0462 Payroll Deductions and Withholding					
0480 Unearned Revenues	459,654				
0490 Other Current Liabilities	849,537				
Total Liabilities	\$3,862,429				
0950 Deferred Inflows of Resources	513,794				
Fund Balances					
0810 Nonspendable Fund Balance					
0820 Restricted Fund Balance					
0830 Committed Fund Balance	300,000				
0840 Assigned Fund Balance					
0850 Unassigned Fund Balance	6,438,987				
Total Fund Balances	\$6,738,987				
Total Liabilities, Deferred Inflows Of Resources And Fund Balances	\$11,115,210				

LEA : 129546003 Pine Grove Area SD

Printed 1/24/2018 12:48:27 PM

Amounts Expressed in Whole Dollars		<u>Capital Reserve (1431)</u> <u>(32)</u>	<u>Other Capital Projects</u> <u>Fund</u> <u>(39)</u>	<u>Debt Service</u> <u>(40)</u>	<u>Permanent</u> <u>(90)</u>	<u>Total Governmental</u> <u>Funds</u>
Liabilities And Deferred Inflows Of Resources And Fund Balances						
Liabilities						
0400	Due to Other Funds					282,733
0411	Due to Other Governments					
0412	Due to Primary Government					
0413	Due to Component Unit					
0420	Accounts Payable		12,900			1,389,721
0430	Contracts Payable					
0440	Current Portion of Long-Term Debt					
0450	Short-Term Payables					
0461	Accrued Salaries and Benefits					893,684
0462	Payroll Deductions and Withholding					
0480	Unearned Revenues					459,654
0490	Other Current Liabilities					849,537
Total Liabilities			\$12,900			\$3,875,329
0950	Deferred Inflows of Resources					513,794
Fund Balances						
0810	Nonspendable Fund Balance					
0820	Restricted Fund Balance		807,790			807,790
0830	Committed Fund Balance					300,000
0840	Assigned Fund Balance					
0850	Unassigned Fund Balance					6,438,987
Total Fund Balances			\$807,790			\$7,546,777
Total Liabilities, Deferred Inflows Of Resources And Fund Balances			\$820,690			\$11,935,900

LEA : 129546003 Pine Grove Area SD

Printed 1/24/2018 12:48:30 PM

Amounts Expressed in Whole Dollars	General Fund (10)	Public Purpose Trust (27)	Other Compt Approved (28)	Athletic / Activity (29)	Capital Reserve (690. 1850) (31)
Revenues					
6000 Revenue from Local Sources	10,916,541				
7000 Revenue from State Sources	11,805,860				
8000 Revenue from Federal Sources	406,119				
Total Revenues	\$23,128,520				
Expenditures					
1000 Instruction	12,775,600				
2000 Support Services	7,286,724				
3000 Operation of Non-Instructional Services	512,556				
4000 Facilities Acquisition, Construction and Improvement Services	2,306,206				
5110 Debt Service	2,014,608				
5130 Refund of Prior Year Revenues / Receipts	3,807				
Total Expenditures	\$24,899,501				
Excess (Deficiency) Of Revenues Over Expenditures	(\$1,770,981)				
Other Financing Sources (Uses)					
9110 Face Value of Bonds Issued					
9120 Proceeds from Refunding of Bonds					
9130 Bond Premiums					
9200 Proceeds from Extended-Term Financing					
9300 Interfund Transfers - IN					
9400 Sale of or Compensation for Loss of Fixed Assets	1,242				
9710 Transfers from Component Units					
9720 Transfers from Primary Governments					
9910 Other Financing Sources Not Listed in the 9000 Series					
9990 Insurance Recoveries					
5120 Debt Service – Refunded Bonds					
5150 Bond Discounts					
5200 Interfund Transfers – Out					
5300 Transfers Out to Component Units/Primary Governments					
Total Other Financing Sources (Uses)	\$1,242				

LEA : 129546003 Pine Grove Area SD

Printed 1/24/2018 12:48:30 PM

Amounts Expressed in Whole Dollars		<u>Capital Reserve (1431</u> <u>(32)</u>	<u>Other Capital Projects</u> <u>Fund</u> <u>(39)</u>	<u>Debt Service</u> <u>(40)</u>	<u>Permanent</u> <u>(90)</u>	<u>Total Governmental</u> <u>Funds</u>
Revenues						
6000	Revenue from Local Sources		4,058			10,920,599
7000	Revenue from State Sources					11,805,860
8000	Revenue from Federal Sources					406,119
Total Revenues			\$4,058			\$23,132,578
Expenditures						
1000	Instruction					12,775,600
2000	Support Services					7,286,724
3000	Operation of Non-Instructional Services					512,556
4000	Facilities Acquisition, Construction and Improvement Services		687,816			2,994,022
5110	Debt Service					2,014,608
5130	Refund of Prior Year Revenues / Receipts					3,807
Total Expenditures			\$687,816			\$25,587,317
Excess (Deficiency) Of Revenues Over Expenditures			(\$683,758)			(\$2,454,739)
Other Financing Sources (Uses)						
9110	Face Value of Bonds Issued					
9120	Proceeds from Refunding of Bonds					
9130	Bond Premiums					
9200	Proceeds from Extended-Term Financing					
9300	Interfund Transfers - IN					
9400	Sale of or Compensation for Loss of Fixed Assets					1,242
9710	Transfers from Component Units					
9720	Transfers from Primary Governments					
9910	Other Financing Sources Not Listed in the 9000 Series					
9990	Insurance Recoveries					
5120	Debt Service – Refunded Bonds					
5150	Bond Discounts					
5200	Interfund Transfers – Out					
5300	Transfers Out to Component Units/Primary Governments					
Total Other Financing Sources (Uses)						\$1,242

Amounts Expressed in Whole Dollars		<u>General Fund</u> <u>(10)</u>	<u>Public Purpose Trust</u> <u>(27)</u>	<u>Other Compt Approved</u> <u>(28)</u>	<u>Athletic / Activity</u> <u>(29)</u>	<u>Capital Reserve</u> <u>(690.</u> <u>1850)</u> <u>(31)</u>
Special And Extraordinary Items						
9920	Special Items – Gains					
9930	Extraordinary Items – Gains					
5520	Special Items – Losses					
5530	Extraordinary Items – Losses					
Net Change In Fund Balances		(\$1,769,739)				
Fund Balance						
0001	Fund Balance - Beginning of Fiscal Year	8,508,726				
Fund Balance - End Of Year		\$6,738,987				

Amounts Expressed in Whole Dollars		<u>Capital Reserve (1431)</u> <u>(32)</u>	<u>Other Capital Projects</u> <u>Fund</u> <u>(39)</u>	<u>Debt Service</u> <u>(40)</u>	<u>Permanent</u> <u>(90)</u>	<u>Total Governmental</u> <u>Funds</u>
Special And Extraordinary Items						
9920	Special Items – Gains					
9930	Extraordinary Items – Gains					
5520	Special Items – Losses					
5530	Extraordinary Items – Losses					
Net Change In Fund Balances			(\$683,758)			(\$2,453,497)
Fund Balance						
0001	Fund Balance - Beginning of Fiscal Year		1,491,548			10,000,274
Fund Balance - End Of Year			\$807,790			\$7,546,777

LEA : 129546003 Pine Grove Area SD

Printed 1/24/2018 12:48:31 PM

Amounts Expressed in Whole Dollars		<u>Food Service</u> <u>(51)</u>	<u>Child Care</u> <u>Operations</u> <u>(52)</u>	<u>Other Enterprise</u> <u>(58)</u>	<u>TOTAL</u>	<u>Internal Service</u> <u>(60)</u>
Assets And Deferred Outflows Of Resources						
Current Assets						
0100	Cash and Cash Equivalents	254,516			254,516	
0110	Investments					
0130	Due From Other Funds	316,050			316,050	
0141	Due From Other Governments					
0142	State Revenue Receivable	125			125	
0143	Federal Revenue Receivable	1,858			1,858	
0146	Due from Primary Government					
0147	Due from Component Unit					
0150	Other Receivables					
0170	Inventories	17,859			17,859	
0180	Prepaid Expenses (Expenditures)					
0190	Other Current Assets					
Total Current Assets		\$590,408			\$590,408	
Noncurrent Assets						
0211	Land					
0212	Site Improvements (Net)					
0220	Buildings and Building Improvements (Net)					
0230	Machinery, Equipment and Furniture (Net)	8,355			8,355	
0250	Construction in Progress					
0260	Long Term Prepayments					
0290	Other Noncurrent Assets					
Total Noncurrent Assets		\$8,355			\$8,355	
0910	Deferred Outflows of Resources					
Total Assets And Deferred Outflows Of Resources		\$598,763			\$598,763	

Amounts Expressed in Whole Dollars	<u>Food Service</u> <u>(51)</u>	<u>Child Care</u> <u>Operations</u> <u>(52)</u>	<u>Other Enterprise</u> <u>(58)</u>	<u>TOTAL</u>	<u>Internal Service</u> <u>(60)</u>
Liabilities And Deferred Inflows Of Resources And Net Position					
Current Liabilities					
0400 Due to Other Funds	135,342			135,342	
0411 Due to Other Governments					
0413 Due to Component Unit					
0420 Accounts Payable	12,804			12,804	
0430 Contracts Payable					
0440 Current Portion of Long-Term Debt					
0450 Short-Term Payables					
0461 Accrued Salaries and Benefits					
0462 Payroll Deductions and Withholding					
0480 Unearned Revenues	7,372			7,372	
0490 Other Current Liabilities	14,813			14,813	
Total Current Liabilities	\$170,331			\$170,331	
Noncurrent Liabilities					
0510 Bonds Payable					
0520 Extended-Term Financing Agreements Payable					
0530 Lease-Purchase Obligations					
0540 Accumulated Compensated Absences					
0550 Authority Lease Obligations					
0560 Other Post-Employment Benefits (OPEB)					
0570 Net Pension Liability					
0599 Other Noncurrent Liabilities					
Total Noncurrent Liabilities					
Total Liabilities	\$170,331			\$170,331	
0950 Deferred Inflows of Resources					
Net Position					
0791 Net Investment in Capital Assets	8,355			8,355	
0008 Restricted Net Position (0792 – 0798)					
0799 Unrestricted Net Position	420,077			420,077	
Total Net Position	\$428,432			\$428,432	
Total Liabilities And Deferred Inflows Of Resources And Net Position	\$598,763			\$598,763	

Amounts Expressed in Whole Dollars	Food Service (51)	Child Care Operations (52)	Other Enterprise (58)	TOTAL	Internal Service (60)
Operating Revenues					
6600 Food Service Revenue	437,398			437,398	
0071 Charges for Services					
0072 Other Operating Revenue					
Total Operating Revenues	\$437,398			\$437,398	
Operating Expenses					
100 Personnel Services – Salaries					
200 Personnel Services – Employee Benefits					
300 Purchased Professional and Technical Services					
400 Purchased Property Services					
500 Other Purchased Services	730,343			730,343	
600 Supplies	48,062			48,062	
740 Depreciation	1,198			1,198	
810 Dues and Fees	246			246	
890 Miscellaneous Expenditures					
Total Operating Expenses	\$779,849			\$779,849	
Operating Income (Loss)	(\$342,451)			(\$342,451)	
Non Operating Revenues (Expenses)					
6500 Earnings on Investments	4,537			4,537	
6920 Contributions and Donations from Private Sources					
6930 Gains or Losses on Sale of Fixed Assets					
6991 Refunds of a Prior Year Expenditure					
7000 Revenue from State Sources	26,093			26,093	
8000 Revenue from Federal Sources	420,794			420,794	
820 Claims and Judgments Against the LEA					
830 Interest					
TOTAL Non Operating Revenues (Expenses)	\$451,424			\$451,424	
Income (Loss) Before Contributions And Transfers	\$108,973			\$108,973	

Amounts Expressed in Whole Dollars	<u>Food Service</u> <u>(51)</u>	<u>Child Care Operations</u> <u>(52)</u>	<u>Other Enterprise</u> <u>(58)</u>	<u>TOTAL</u>	<u>Internal Service</u> <u>(60)</u>
Contributions, Transfers, and Special and Extraordinary Items					
5200 Interfund Transfers – Out					
5300 Transfers Out to Component Units/Primary Governments					
5520 Special Items – Losses					
5530 Extraordinary Items – Losses					
9300 Interfund Transfers - IN					
9500 Capital Contributions					
9700 Transfers IN From Component Units/Primary Governments					
9920 Special Items – Gains					
9930 Extraordinary Items – Gains					
Change In Net Position	\$108,973			\$108,973	
0002 Net Position - Beginning of Fiscal Year	319,459			319,459	
0003 Accounting Changes / Residual Equity Transfers					
Net Position - End Of Year	\$428,432			\$428,432	

LEA : 129546003 Pine Grove Area SD

Printed 1/24/2018 12:48:35 PM

Amounts Expressed in Whole Dollars		<u>Food Service</u> <u>(51)</u>	<u>Child Care Operations</u> <u>(52)</u>	<u>Other Enterprise</u> <u>(58)</u>	<u>TOTAL</u>	<u>Internal Service(60)</u>
Cash Flows From Operating Activities						
0011	Cash Receipts From Users	447,351			447,351	
0012	Cash Receipts From Assessments Made to Other Funds					
0013	Cash Receipts From Earnings on Investments					
0014	Cash Receipts From Other Operating Revenue					
0015	Cash Payments To Employees For Services					
0016	Cash Payments For Insurance Claims					
0017	Cash Payments To Suppliers For Goods and Services	1,660,419			1,660,419	
0018	Cash Payments For Other Operating Expenses	246			246	
Net Cash Provided By (Used For) Operating Activities		(\$1,213,314)			(\$1,213,314)	
Cash Flows From Non-Capital Financing Activities						
0021	Receipts From Local Sources - 6000					
0022	Receipts From State Sources - 7000	26,093			26,093	
0023	Receipts From Federal Sources -8000	420,794			420,794	
0024	Notes and Loans Received (Repaid)					
0025	Interest Paid on Notes/Loans - 5100-830					
0026	Operating Transfers In (Out)/Residual Equity Trans					
0027	Operating Transfers In (Out) Primary Government / Comp Unit					
0028	Receipts From Refund of Prior Year Expenditures - 6991					
0029	Special and Extraordinary Gains (losses)					
Net Cash Prov By (Used for) Non-Capital Financing Activities		\$446,887			\$446,887	
Cash Flows From Capital and Related Financing Activities						
0031	Payments For Fac Acq, Const, and Imp - 4000					
0032	Gain / (Loss) on Sale of Fixed Assets - 6930					
0033	Proceeds From Extended Term Financing - 9200					
0034	Principal Paid on Financing Agreements					
0035	Interest Paid on Financing Agreements - 5100-830					
0036	(Inc) Dec in Contributed Capital					
Net Cash Prov By (Used for) Capital and Related Financing Activities						
Cash Flows From Investing Activities						
0041	Earnings on Investments - 6500	4,537			4,537	
0042	Purchase of Inv Securities / Deposits to Inv Pools					
0043	Receipts From Investment Pool Withdrawals					
0044	Proceeds from Sale and Maturity of Inv Securities					
0045	Loans Received (Paid)					
Net Cash Prov By (Used for) Investing Activities		\$4,537			\$4,537	

LEA : 129546003 Pine Grove Area SD

Printed 1/24/2018 12:48:35 PM

	Food Service (51)	Child Care Operations (52)	Other Enterprise (58)	TOTAL	Internal Service (60)
Net Increase (Decrease) in Cash Flows	(761,890)			(761,890)	
0004 Cash and Cash Equivalents Beginning of Year	1,016,406			1,016,406	
Cash and Cash Equivalents at Year End	\$254,516			\$254,516	
Reconciliation of Operating Income (Loss) To Net Cash Provided by (Used For) Operating Activities					
0005 Operating Income (Loss) per REP	(342,451)			(342,451)	
Adjustments					
0051 Depreciation and Net Amortization	1,198			1,198	
0052 Provision for Uncollectible Accounts					
0053 Other Adjustments					
Effect of Changes in Assets, Liabilities, Deferred Outflows and Deferred Inflows					
0054 (Inc) Dec In Accounts Receivable (0120-0150)	5,079			5,079	
0055 Advances to Other Funds (0160)	(872,669)			(872,669)	
0056 (Inc) Dec in Inventories (0170)	(5,867)			(5,867)	
0057 (Inc) Dec in Prepaid Expenses (0180)					
0058 (Inc) Dec in Other Current or Noncurrent Assets					
0064 Deferred Outflows (0910)					
0059 Inc (Dec) in Accounts Payable (0400-0450)	(3,478)			(3,478)	
0060 Inc (Dec) in Accrued Salaries/Benefits (0461)					
0065 Inc (Dec) in Net Pension Liabilities (0570)					
0066 Inc (Dec) in Other Postemp Benefit Oblig (0560)					
0061 Inc (Dec) in Payroll Deductions/Withholding (0462)					
0062 Inc (Dec) in Unearned Revenue (0480)	4,874			4,874	
0063 Inc (Dec) in Other Current or Noncurrent Liabilities					
0067 Deferred Inflows (0950)					
Total Adjustments	(\$870,863)			(\$870,863)	
Cash Provided By (Used for) Total	(\$1,213,314)			(\$1,213,314)	

COMBINED STATEMENT OF CASH FLOWS
SCHEDULE OF NONCASH INVESTING, CAPITAL, AND FINANCING ACTIVITIES

Explanation of Transaction and Balance Sheet Effect	Amount
Total	

LEA : 129546003 Pine Grove Area SD

Printed 1/24/2018 12:48:35 PM

Amounts Expressed in Whole Dollars	<u>Private Purpose Trust</u> <u>(71)</u>	<u>Investment Trust</u> <u>(72)</u>	<u>Pension Trust</u> <u>(73)</u>	<u>Activity</u> <u>(81)</u>
Assets And Deferred Outflows Of Resources				
Assets				
0100 Cash and Cash Equivalents	83,600			70,101
0110 Investments				
0130 Due From Other Funds	625			360
0147 Due from Component Unit				
0150 Other Receivables				
0170 Inventories				
0180 Prepaid Expenses (Expenditures)				
0190 Other Current Assets				
0220 Buildings and Building Improvements (Net)				
0230 Machinery, Equipment and Furniture (Net)				
Total Assets	\$84,225			\$70,461
0910 Deferred Outflows of Resources				
Total Assets And Deferred Outflows Of Resources	\$84,225			\$70,461

LEA : 129546003 Pine Grove Area SD

Printed 1/24/2018 12:48:35 PM

Amounts Expressed in Whole Dollars		<u>Other Agency</u> <u>(89)</u>	<u>Discrete Component Units</u> <u>(98)</u>	<u>Discrete Component Units</u> <u>(99)</u>	<u>Total Fiduciary Funds</u>
Assets And Deferred Outflows Of Resources					
Assets					
0100	Cash and Cash Equivalents				153,701
0110	Investments				
0130	Due From Other Funds				985
0147	Due from Component Unit				
0150	Other Receivables				
0170	Inventories				
0180	Prepaid Expenses (Expenditures)				
0190	Other Current Assets				
0220	Buildings and Building Improvements (Net)				
0230	Machinery, Equipment and Furniture (Net)				
Total Assets					\$154,686
0910	Deferred Outflows of Resources				
Total Assets And Deferred Outflows Of Resources					\$154,686

LEA : 129546003 Pine Grove Area SD

Printed 1/24/2018 12:48:35 PM

Amounts Expressed in Whole Dollars	<u>Private Purpose Trust</u> <u>(71)</u>	<u>Investment Trust</u> <u>(72)</u>	<u>Pension Trust</u> <u>(73)</u>	<u>Activity</u> <u>(81)</u>
Liabilities, Deferred Inflows Of Resources And Net Position				
Liabilities				
0400 Due to Other Funds	5,360			1,042
0411 Due to Other Governments				
0412 Due to Primary Government				
0413 Due to Component Unit				
0420 Accounts Payable				
0430 Contracts Payable				
0450 Short-Term Payables				69,419
0461 Accrued Salaries and Benefits				
0462 Payroll Deductions and Withholding				
0480 Unearned Revenues				
0490 Other Current Liabilities				
Total Liabilities	\$5,360			\$70,461
0950 Deferred Inflows of Resources				
Net Position				
0791 Net Investment in Capital Assets				
0009 Restricted Net Position (0792 – 0798)				
0799 Unrestricted Net Position	78,865			
Total Net Position	\$78,865			
Total Liabilities, Deferred Inflows Of Resources And Net Position	\$84,225			\$70,461

LEA : 129546003 Pine Grove Area SD

Printed 1/24/2018 12:48:35 PM

Amounts Expressed in Whole Dollars

<u>Other Agency</u> <u>(89)</u>	<u>Discrete Component Units</u> <u>(98)</u>	<u>Discrete Component Units</u> <u>(99)</u>	<u>Total Fiduciary Funds</u>
------------------------------------	--	--	------------------------------

Liabilities, Deferred Inflows Of Resources And Net Position

Liabilities

0400 Due to Other Funds				6,402
0411 Due to Other Governments				
0412 Due to Primary Government				
0413 Due to Component Unit				
0420 Accounts Payable				
0430 Contracts Payable				
0450 Short-Term Payables				69,419
0461 Accrued Salaries and Benefits				
0462 Payroll Deductions and Withholding				
0480 Unearned Revenues				
0490 Other Current Liabilities				

Total Liabilities				\$75,821
--------------------------	--	--	--	-----------------

0950 Deferred Inflows of Resources

Net Position

0791 Net Investment in Capital Assets				
0009 Restricted Net Position (0792 – 0798)				
0799 Unrestricted Net Position				78,865

Total Net Position				\$78,865
---------------------------	--	--	--	-----------------

Total Liabilities, Deferred Inflows Of Resources And Net Position				\$154,686
--	--	--	--	------------------

LEA : 129546003 Pine Grove Area SD

Printed 1/24/2018 12:48:36 PM

Amounts Expressed in Whole Dollars	<u>Private Purpose Trust</u> <u>(71)</u>	<u>Investment Trust</u> <u>(72)</u>	<u>Pension Trust</u> <u>(73)</u>	<u>Discrete Component</u> <u>Units</u> <u>(98)</u>	<u>Discrete Component</u> <u>Units</u> <u>(99)</u>	<u>Total Fiduciary</u> <u>Funds</u>
Additions						
0091 Gifts and Contributions	154					154
0092 Other Additions	516					516
Deductions						
0093 Scholarships Awarded	2,400					2,400
0094 Other Deductions						
Change In Net Position	(\$1,730)					(\$1,730)
0006 Net Position – Beginning of Fiscal Year	80,595					80,595
0007 Net Position Held in Trust for Pension Benefits						
Net Position - End of Fiscal Year	\$78,865					\$78,865

LEA : 129546003 Pine Grove Area SD

General Fund (10)

Printed 1/24/2018 12:48:37 PM

Page - 1 of 4

	Revenue Reported In Current Year	Current Year Tax Accrual	Prior Year Tax Accrual	Taxes Collected In Current Year
Revenue from Local Sources				
6111 Current Real Estate Taxes	7,824,771.50			7,824,771.50
6113 Public Utility Realty Taxes	11,526.13			11,526.13
6114 Payments in Lieu of Current Taxes - State / Local	20,574.20			20,574.20
6143 Current Act 511 Local Services Taxes	18,890.47			18,890.47
6151 Current Act 511 Earned Income Taxes	1,139,783.50			1,139,783.50
6152 Current Act 511 Occupation Taxes	716,904.00			716,904.00
6153 Current Act 511 Real Estate Transfer Taxes	111,570.94			111,570.94
6411 Delinquent Real Estate Taxes	411,051.77			411,051.77
6420 Delinquent Per Capita Taxes, Section 679	40.43			40.43
6440 Delinquent Local Enabling Taxes - Flat Rate Assessments	40.42			40.42
6452 Delinquent Act 511 Occupation Taxes	120,488.81			120,488.81
6500 Earnings on Investments	53,398.60			
6700 Revenues from LEA Activities	47,121.28			
6821 State Revenue Received from Other Pennsylvania Public LEAs	14,960.00			
6831 Federal Revenue Received from Other Pennsylvania Public LEAs	28,144.36			
6832 Federal IDEA Revenue Received as Pass Through	242,373.00			
6910 Rentals	13,250.50			
6920 Contributions and Donations from Private Sources	6,304.95			
6941 Regular Day School Tuition	98,857.88			
6991 Refunds of a Prior Year Expenditure	2,801.12			
6999 Other Revenues Not Specified Above	33,687.32			
TOTAL Revenue from Local Sources	\$10,916,541.18			\$10,375,642.17

	Revenue Reported In Current Year			
<u>Revenue from State Sources</u>				
7110 Basic Education Funding	6,727,784.00			
7160 Tuition for Orphans Subsidy	43,811.00			
7271 Special Education funds for School-Aged Pupils	988,178.00			
7292 Pre-K Counts	7,926.00			
7311 Pupil Transportation Subsidy	789,254.00			
7312 Nonpublic and Charter School Pupil Transportation Subsidy	9,625.00			
7320 Rental and Sinking Fund Payments / Building Reimbursement Subsidy	84,343.00			
7330 Health Services (Medical, Dental, Nurse, Act 25)	28,898.00			
7340 State Property Tax Reduction Allocation	580,069.00			
7505 Ready to Learn Block Grant	350,884.00			
7599 Other State Revenue Not Listed Elsewhere in the 7000 Series	3,732.00			
7810 State Share of Social Security and Medicare Taxes	445,566.00			
7820 State Share of Retirement Contributions	1,745,790.00			
TOTAL Revenue from State Sources	\$11,805,860.00			

Revenue Reported In Current Year				
Revenue from Federal Sources				
8390	Other Restricted Federal Grants-in-Aid Directly from the Federal Government	65,411.00		
8514	NCLB, Title I - Improving the Academic Achievement of the Disadvantaged	270,954.00		
8515	NCLB, Title II - Preparing, Training and Recruiting High Quality Teachers and Principals	66,966.00		
8820	Medical Assistance Reimbursement for Administrative Claiming (Quarterly) Program	2,788.00		
TOTAL Revenue from Federal Sources		\$406,119.00		

Revenue Reported In Current Year				
<u>Other Financing Sources</u>				
9400 Sale of or Compensation for Loss of Fixed Assets	1,242.00			
TOTAL Other Financing Sources	\$1,242.00			
TOTAL FROM ALL SOURCES	\$23,129,762.18			\$10,375,642.17

Revenue from Local Sources	10,916,541.18
Revenue from State Sources	11,805,860.00
Revenue from Federal Sources	406,119.00
Other Financing Sources	1,242.00
TOTAL FROM ALL SOURCES	\$23,129,762.18

LEA : 129546003 Pine Grove Area SD

Printed 1/24/2018 12:48:39 PM

General Fund (10)

1000 Instruction		Total
100 Personnel Services – Salaries		
100 Personnel Services – Salaries		6,907,064.81
Total Personnel Services – Salaries		\$6,907,064.81
200 Personnel Services – Employee Benefits		
210 Group Insurance – Contracted Provider		1,759,613.60
220 Social Security Contributions		499,981.89
230 PSERS Retirement Contributions		2,015,632.91
250 Unemployment Compensation		(46,096.18)
260 Workers’ Compensation		51,650.10
Total Personnel Services – Employee Benefits		\$4,280,782.32
300 Purchased Professional and Technical Services		
310 Official / Administrative Services		194,064.14
322 Professional Educational Services – Ius		74,047.49
323 Professional Educational Services – Other Educational Agencies		1,220.75
324 Professional Educational Services – Employee Training and Development Services		1,177.00
Total Purchased Professional and Technical Services		\$270,509.38
400 Purchased Property Services		
420 Utility Services		3,000.00
430 Repairs and Maintenance Services		222.38
440 Rentals		44,525.62
Total Purchased Property Services		\$47,748.00
500 Other Purchased Services		
510 Student Transportation Services		29,319.15
530 Communications		8,250.00
550 Printing and Binding		198.05
561 Tuition To Other School Districts Within the State		72,042.51
562 Tuition To Pennsylvania Charter Schools		270,267.62
564 Tuition To Career and Technology Centers		547,572.00
568 Tuition To Private Residential Rehabilitative Institutions (PRRI) [In-State] and Detention Centers		18,372.01
580 Travel		2,527.48
591 Services Purchased Locally		345.00
Total Other Purchased Services		\$948,893.82
600 Supplies		
610 General Supplies		198,920.81
620 Energy		11.61
630 Food		1,449.61
640 Books and Periodicals		4,084.09
650 Supplies & Fees – Technology Related		6,692.16
Total Supplies		\$211,158.28
700 Property		
758 Capitalized Technology Software - Original		20,000.00
768 Capitalized Technology Software - Replacement		86,654.34
Total Property		\$106,654.34

LEA : 129546003 Pine Grove Area SD

Printed 1/24/2018 12:48:39 PM

General Fund (10)	
1000 Instruction	<u>Total</u>
800 <u>Other Objects</u>	
810 Dues and Fees	1,550.00
890 Miscellaneous Expenditures	1,239.05
Total Other Objects	\$2,789.05
Total 1000 Instruction	\$12,775,600.00

LEA : 129546003 Pine Grove Area SD

Printed 1/24/2018 12:48:39 PM

General Fund (10)

1100 Regular Programs – Elementary / Secondary	Elementary	Secondary	Federal	Total
100 Personnel Services – Salaries				
100 Personnel Services – Salaries	2,525,501.95	2,396,214.13	555,452.00	5,477,168.08
Total Personnel Services – Salaries	\$2,525,501.95	\$2,396,214.13	\$555,452.00	\$5,477,168.08
200 Personnel Services – Employee Benefits				
210 Group Insurance – Contracted Provider	789,316.76	662,167.97	11,803.92	1,463,288.65
220 Social Security Contributions	225,696.67	163,156.74	5,287.57	394,140.98
230 PSERS Retirement Contributions	881,082.21	689,922.34	20,755.96	1,591,760.51
250 Unemployment Compensation	(23,589.17)	(24,034.33)	26.51	(47,596.99)
260 Workers' Compensation	23,099.43	15,949.36	580.53	39,629.32
Total Personnel Services – Employee Benefits	\$1,895,605.90	\$1,507,162.08	\$38,454.49	\$3,441,222.47
300 Purchased Professional and Technical Services				
310 Official / Administrative Services	97,032.07	97,032.07		194,064.14
324 Professional Educational Services – Employee Training and Development Services			1,177.00	1,177.00
Total Purchased Professional and Technical Services	\$97,032.07	\$97,032.07	\$1,177.00	\$195,241.14
400 Purchased Property Services				
420 Utility Services			3,000.00	3,000.00
430 Repairs and Maintenance Services	(2,117.02)	2,339.40		222.38
440 Rentals	23,378.58	21,147.04		44,525.62
Total Purchased Property Services	\$21,261.56	\$23,486.44	\$3,000.00	\$47,748.00
500 Other Purchased Services				
510 Student Transportation Services	2,199.95	13,142.06		15,342.01
530 Communications	4,125.00	4,125.00		8,250.00
550 Printing and Binding	99.03	99.02		198.05
561 Tuition To Other School Districts Within the State	2,973.42	2,973.41		5,946.83
562 Tuition To Pennsylvania Charter Schools	135,133.81	135,133.81		270,267.62
568 Tuition To Private Residential Rehabilitative Institutions (PRRI) [In-State] and Detention Centers	7,792.90	7,792.89		15,585.79
580 Travel	1,080.00			1,080.00
Total Other Purchased Services	\$153,404.11	\$163,266.19		\$316,670.30
600 Supplies				
610 General Supplies	86,170.46	93,034.41	2,400.00	181,604.87
630 Food	83.00			83.00
640 Books and Periodicals	198.05	2,869.04		3,067.09
650 Supplies & Fees – Technology Related		6,692.16		6,692.16
Total Supplies	\$86,451.51	\$102,595.61	\$2,400.00	\$191,447.12
700 Property				
758 Capitalized Technology Software - Original			20,000.00	20,000.00
768 Capitalized Technology Software - Replacement		86,654.34		86,654.34
Total Property		\$86,654.34	\$20,000.00	\$106,654.34
800 Other Objects				
810 Dues and Fees		1,300.00		1,300.00
890 Miscellaneous Expenditures		965.05		965.05

LEA : 129546003 Pine Grove Area SD

Printed 1/24/2018 12:48:39 PM

General Fund (10)

1100 Regular Programs – Elementary / Secondary	<u>Elementary</u>	<u>Secondary</u>	<u>Federal</u>	<u>Total</u>
Total Other Objects		\$2,265.05		\$2,265.05
Total 1100 Regular Programs – Elementary / Secondary	\$4,779,257.10	\$4,378,675.91	\$620,483.49	\$9,778,416.50

LEA : 129546003 Pine Grove Area SD

Printed 1/24/2018 12:48:39 PM

General Fund (10)

1110 Regular Programs

	Elementary	Secondary	Federal	Total
100 <u>Personnel Services – Salaries</u>				
100 Personnel Services – Salaries	2,525,501.95	2,396,214.13	276,226.00	5,197,942.08
Total Personnel Services – Salaries	\$2,525,501.95	\$2,396,214.13	\$276,226.00	\$5,197,942.08
200 <u>Personnel Services – Employee Benefits</u>				
210 Group Insurance – Contracted Provider	789,316.76	662,167.97	931.92	1,452,416.65
220 Social Security Contributions	225,696.67	163,156.74	5,287.57	394,140.98
230 PSERS Retirement Contributions	881,082.21	689,922.34	20,755.96	1,591,760.51
250 Unemployment Compensation	(23,589.17)	(24,034.33)	26.51	(47,596.99)
260 Workers' Compensation	23,099.43	15,949.36	580.53	39,629.32
Total Personnel Services – Employee Benefits	\$1,895,605.90	\$1,507,162.08	\$27,582.49	\$3,430,350.47
300 <u>Purchased Professional and Technical Services</u>				
310 Official / Administrative Services	97,032.07	97,032.07		194,064.14
Total Purchased Professional and Technical Services	\$97,032.07	\$97,032.07		\$194,064.14
400 <u>Purchased Property Services</u>				
430 Repairs and Maintenance Services	(2,117.02)	2,339.40		222.38
440 Rentals	23,378.58	21,147.04		44,525.62
Total Purchased Property Services	\$21,261.56	\$23,486.44		\$44,748.00
500 <u>Other Purchased Services</u>				
510 Student Transportation Services	2,199.95	13,142.06		15,342.01
530 Communications	4,125.00	4,125.00		8,250.00
550 Printing and Binding	99.03	99.02		198.05
561 Tuition To Other School Districts Within the State	2,973.42	2,973.41		5,946.83
562 Tuition To Pennsylvania Charter Schools	135,133.81	135,133.81		270,267.62
568 Tuition To Private Residential Rehabilitative Institutions (PRRI) [In-State] and Detention Centers	7,792.90	7,792.89		15,585.79
580 Travel	1,080.00			1,080.00
Total Other Purchased Services	\$153,404.11	\$163,266.19		\$316,670.30
600 <u>Supplies</u>				
610 General Supplies	86,170.46	93,034.41		179,204.87
630 Food	83.00			83.00
640 Books and Periodicals	198.05	2,869.04		3,067.09
650 Supplies & Fees – Technology Related		6,692.16		6,692.16
Total Supplies	\$86,451.51	\$102,595.61		\$189,047.12
700 <u>Property</u>				
768 Capitalized Technology Software - Replacement		86,654.34		86,654.34
Total Property		\$86,654.34		\$86,654.34
800 <u>Other Objects</u>				
810 Dues and Fees		1,300.00		1,300.00
890 Miscellaneous Expenditures		965.05		965.05
Total Other Objects		\$2,265.05		\$2,265.05
Total 1110 Regular Programs	\$4,779,257.10	\$4,378,675.91	\$303,808.49	\$9,461,741.50

LEA : 129546003 Pine Grove Area SD

Printed 1/24/2018 12:48:39 PM

General Fund (10)				
1190 Federally-Funded Regular Programs	<u>Elementary</u>	<u>Secondary</u>	<u>Federal</u>	<u>Total</u>
100 <u>Personnel Services – Salaries</u>				
100 Personnel Services – Salaries			279,226.00	279,226.00
Total Personnel Services – Salaries			\$279,226.00	\$279,226.00
200 <u>Personnel Services – Employee Benefits</u>				
210 Group Insurance – Contracted Provider			10,872.00	10,872.00
Total Personnel Services – Employee Benefits			\$10,872.00	\$10,872.00
300 <u>Purchased Professional and Technical Services</u>				
324 Professional Educational Services – Employee Training and Development Services			1,177.00	1,177.00
Total Purchased Professional and Technical Services			\$1,177.00	\$1,177.00
400 <u>Purchased Property Services</u>				
420 Utility Services			3,000.00	3,000.00
Total Purchased Property Services			\$3,000.00	\$3,000.00
600 <u>Supplies</u>				
610 General Supplies			2,400.00	2,400.00
Total Supplies			\$2,400.00	\$2,400.00
700 <u>Property</u>				
758 Capitalized Technology Software - Original			20,000.00	20,000.00
Total Property			\$20,000.00	\$20,000.00
Total 1190 Federally-Funded Regular Programs			\$316,675.00	\$316,675.00

LEA : 129546003 Pine Grove Area SD

Printed 1/24/2018 12:48:39 PM

General Fund (10)				
1200 Special Programs – Elementary / Secondary	<u>Elementary</u>	<u>Secondary</u>	<u>Federal</u>	<u>Total</u>
100 <u>Personnel Services – Salaries</u>				
100 Personnel Services – Salaries	825,593.98	478,556.63	85,054.78	1,389,205.39
Total Personnel Services – Salaries	\$825,593.98	\$478,556.63	\$85,054.78	\$1,389,205.39
200 <u>Personnel Services – Employee Benefits</u>				
210 Group Insurance – Contracted Provider	142,927.01	132,084.20	21,313.74	296,324.95
220 Social Security Contributions	62,774.98	36,718.51	3,148.76	102,642.25
230 PSERS Retirement Contributions	250,963.01	147,582.53	12,770.93	411,316.47
250 Unemployment Compensation	974.26	469.94	36.27	1,480.47
260 Workers' Compensation	6,935.03	4,020.10	714.48	11,669.61
Total Personnel Services – Employee Benefits	\$464,574.29	\$320,875.28	\$37,984.18	\$823,433.75
300 <u>Purchased Professional and Technical Services</u>				
322 Professional Educational Services – lus	140.00	140.00	4,217.49	4,497.49
Total Purchased Professional and Technical Services	\$140.00	\$140.00	\$4,217.49	\$4,497.49
500 <u>Other Purchased Services</u>				
510 Student Transportation Services	54.69	698.80		753.49
561 Tuition To Other School Districts Within the State	28,266.76	28,266.75		56,533.51
580 Travel	38.63	38.63		77.26
Total Other Purchased Services	\$28,360.08	\$29,004.18		\$57,364.26
600 <u>Supplies</u>				
610 General Supplies	7,864.19	9,394.02		17,258.21
630 Food	182.82	869.99		1,052.81
640 Books and Periodicals	369.00	648.00		1,017.00
Total Supplies	\$8,416.01	\$10,912.01		\$19,328.02
800 <u>Other Objects</u>				
810 Dues and Fees	250.00			250.00
Total Other Objects	\$250.00			\$250.00
Total 1200 Special Programs – Elementary / Secondary	\$1,327,334.36	\$839,488.10	\$127,256.45	\$2,294,078.91

LEA : 129546003 Pine Grove Area SD

Printed 1/24/2018 12:48:39 PM

General Fund (10)

1210 Life Skills Support

	<u>Elementary</u>	<u>Secondary</u>	<u>Federal</u>	<u>Total</u>
100 <u>Personnel Services – Salaries</u>				
100 Personnel Services – Salaries	73,259.14	18,256.13		91,515.27
Total Personnel Services – Salaries	\$73,259.14	\$18,256.13		\$91,515.27
200 <u>Personnel Services – Employee Benefits</u>				
210 Group Insurance – Contracted Provider	16,742.12	1,588.74		18,330.86
220 Social Security Contributions	5,161.32	1,387.91		6,549.23
230 PSERS Retirement Contributions	21,999.58	5,482.28		27,481.86
250 Unemployment Compensation	38.38	8.14		46.52
260 Workers' Compensation	615.39	153.37		768.76
Total Personnel Services – Employee Benefits	\$44,556.79	\$8,620.44		\$53,177.23
500 <u>Other Purchased Services</u>				
510 Student Transportation Services		644.11		644.11
Total Other Purchased Services		\$644.11		\$644.11
600 <u>Supplies</u>				
610 General Supplies	2,204.50	392.28		2,596.78
630 Food	182.82	869.99		1,052.81
640 Books and Periodicals	369.00	648.00		1,017.00
Total Supplies	\$2,756.32	\$1,910.27		\$4,666.59
Total 1210 Life Skills Support	\$120,572.25	\$29,430.95		\$150,003.20

LEA : 129546003 Pine Grove Area SD

Printed 1/24/2018 12:48:39 PM

General Fund (10)

1220 Sensory Support	Elementary	Secondary	Federal	Total
100 <u>Personnel Services – Salaries</u>				
100 Personnel Services – Salaries	174,764.26			174,764.26
Total Personnel Services – Salaries	\$174,764.26			\$174,764.26
200 <u>Personnel Services – Employee Benefits</u>				
210 Group Insurance – Contracted Provider	24,210.74			24,210.74
220 Social Security Contributions	13,161.68			13,161.68
230 PSERS Retirement Contributions	52,481.78			52,481.78
250 Unemployment Compensation	90.68			90.68
260 Workers' Compensation	1,467.90			1,467.90
Total Personnel Services – Employee Benefits	\$91,412.78			\$91,412.78
300 <u>Purchased Professional and Technical Services</u>				
322 Professional Educational Services – lus	140.00	140.00		280.00
Total Purchased Professional and Technical Services	\$140.00	\$140.00		\$280.00
500 <u>Other Purchased Services</u>				
561 Tuition To Other School Districts Within the State	16,712.14	16,712.13		33,424.27
Total Other Purchased Services	\$16,712.14	\$16,712.13		\$33,424.27
600 <u>Supplies</u>				
610 General Supplies	2,138.06			2,138.06
Total Supplies	\$2,138.06			\$2,138.06
800 <u>Other Objects</u>				
810 Dues and Fees	250.00			250.00
Total Other Objects	\$250.00			\$250.00
Total 1220 Sensory Support	\$285,417.24	\$16,852.13		\$302,269.37

LEA : 129546003 Pine Grove Area SD

Printed 1/24/2018 12:48:39 PM

General Fund (10)				
1230 Emotional Support	<u>Elementary</u>	<u>Secondary</u>	<u>Federal</u>	<u>Total</u>
100 <u>Personnel Services – Salaries</u>				
100 Personnel Services – Salaries	59,712.00	19,904.00		79,616.00
Total Personnel Services – Salaries	\$59,712.00	\$19,904.00		\$79,616.00
200 <u>Personnel Services – Employee Benefits</u>				
210 Group Insurance – Contracted Provider	7,564.98	7,564.98		15,129.96
220 Social Security Contributions	4,424.84	1,448.88		5,873.72
230 PSERS Retirement Contributions	17,931.41	5,977.14		23,908.55
250 Unemployment Compensation	74.54	14.81		89.35
260 Workers' Compensation	501.55	167.18		668.73
Total Personnel Services – Employee Benefits	\$30,497.32	\$15,172.99		\$45,670.31
500 <u>Other Purchased Services</u>				
561 Tuition To Other School Districts Within the State	12,234.62	12,234.62		24,469.24
Total Other Purchased Services	\$12,234.62	\$12,234.62		\$24,469.24
600 <u>Supplies</u>				
610 General Supplies	253.06	441.45		694.51
Total Supplies	\$253.06	\$441.45		\$694.51
Total 1230 Emotional Support	\$102,697.00	\$47,753.06		\$150,450.06

LEA : 129546003 Pine Grove Area SD

Printed 1/24/2018 12:48:39 PM

General Fund (10)				
1240 Academic Support	<u>Elementary</u>	<u>Secondary</u>	<u>Federal</u>	<u>Total</u>
100 <u>Personnel Services – Salaries</u>				
100 Personnel Services – Salaries	457,125.70	440,396.50	85,054.78	982,576.98
Total Personnel Services – Salaries	\$457,125.70	\$440,396.50	\$85,054.78	\$982,576.98
200 <u>Personnel Services – Employee Benefits</u>				
210 Group Insurance – Contracted Provider	74,078.53	122,930.48	21,313.74	218,322.75
220 Social Security Contributions	35,581.98	33,881.72	3,148.76	72,612.46
230 PSERS Retirement Contributions	140,312.26	136,123.11	12,770.93	289,206.30
250 Unemployment Compensation	740.44	446.99	36.27	1,223.70
260 Workers' Compensation	3,840.06	3,699.55	714.48	8,254.09
Total Personnel Services – Employee Benefits	\$254,553.27	\$297,081.85	\$37,984.18	\$589,619.30
500 <u>Other Purchased Services</u>				
510 Student Transportation Services	54.69	54.69		109.38
561 Tuition To Other School Districts Within the State	(680.00)	(680.00)		(1,360.00)
580 Travel	38.63	38.63		77.26
Total Other Purchased Services	(\$586.68)	(\$586.68)		(\$1,173.36)
600 <u>Supplies</u>				
610 General Supplies	2,540.60	8,560.29		11,100.89
Total Supplies	\$2,540.60	\$8,560.29		\$11,100.89
Total 1240 Academic Support	\$713,632.89	\$745,451.96	\$123,038.96	\$1,582,123.81

LEA : 129546003 Pine Grove Area SD

Printed 1/24/2018 12:48:39 PM

General Fund (10)				
1241 Learning Support – Public	<u>Elementary</u>	<u>Secondary</u>	<u>Federal</u>	<u>Total</u>
100 <u>Personnel Services – Salaries</u>				
100 Personnel Services – Salaries	430,632.95	413,903.75	85,054.78	929,591.48
Total Personnel Services – Salaries	\$430,632.95	\$413,903.75	\$85,054.78	\$929,591.48
200 <u>Personnel Services – Employee Benefits</u>				
210 Group Insurance – Contracted Provider	70,259.41	119,111.36	21,313.74	210,684.51
220 Social Security Contributions	33,589.98	31,889.72	3,148.76	68,628.46
230 PSERS Retirement Contributions	133,026.54	128,837.39	12,770.93	274,634.86
250 Unemployment Compensation	725.31	431.87	36.27	1,193.45
260 Workers' Compensation	3,617.48	3,476.98	714.48	7,808.94
Total Personnel Services – Employee Benefits	\$241,218.72	\$283,747.32	\$37,984.18	\$562,950.22
500 <u>Other Purchased Services</u>				
561 Tuition To Other School Districts Within the State	(680.00)	(680.00)		(1,360.00)
Total Other Purchased Services	(\$680.00)	(\$680.00)		(\$1,360.00)
600 <u>Supplies</u>				
610 General Supplies	1,655.94	6,819.12		8,475.06
Total Supplies	\$1,655.94	\$6,819.12		\$8,475.06
Total 1241 Learning Support – Public	\$672,827.61	\$703,790.19	\$123,038.96	\$1,499,656.76

LEA : 129546003 Pine Grove Area SD

Printed 1/24/2018 12:48:39 PM

General Fund (10)				
1243 Gifted Support	<u>Elementary</u>	<u>Secondary</u>	<u>Federal</u>	<u>Total</u>
100 <u>Personnel Services – Salaries</u>				
100 Personnel Services – Salaries	26,492.75	26,492.75		52,985.50
Total Personnel Services – Salaries	\$26,492.75	\$26,492.75		\$52,985.50
200 <u>Personnel Services – Employee Benefits</u>				
210 Group Insurance – Contracted Provider	3,819.12	3,819.12		7,638.24
220 Social Security Contributions	1,992.00	1,992.00		3,984.00
230 PSERS Retirement Contributions	7,285.72	7,285.72		14,571.44
250 Unemployment Compensation	15.13	15.12		30.25
260 Workers' Compensation	222.58	222.57		445.15
Total Personnel Services – Employee Benefits	\$13,334.55	\$13,334.53		\$26,669.08
500 <u>Other Purchased Services</u>				
510 Student Transportation Services	54.69	54.69		109.38
580 Travel	38.63	38.63		77.26
Total Other Purchased Services	\$93.32	\$93.32		\$186.64
600 <u>Supplies</u>				
610 General Supplies	884.66	1,741.17		2,625.83
Total Supplies	\$884.66	\$1,741.17		\$2,625.83
Total 1243 Gifted Support	\$40,805.28	\$41,661.77		\$82,467.05

LEA : 129546003 Pine Grove Area SD

Printed 1/24/2018 12:48:39 PM

General Fund (10)

1260 Physical Support	<u>Elementary</u>	<u>Secondary</u>	<u>Federal</u>	<u>Total</u>
100 <u>Personnel Services – Salaries</u>				
100 Personnel Services – Salaries	60,732.88			60,732.88
Total Personnel Services – Salaries	\$60,732.88			\$60,732.88
200 <u>Personnel Services – Employee Benefits</u>				
210 Group Insurance – Contracted Provider	20,330.64			20,330.64
220 Social Security Contributions	4,445.16			4,445.16
230 PSERS Retirement Contributions	18,237.98			18,237.98
250 Unemployment Compensation	30.22			30.22
260 Workers' Compensation	510.13			510.13
Total Personnel Services – Employee Benefits	\$43,554.13			\$43,554.13
600 <u>Supplies</u>				
610 General Supplies	727.97			727.97
Total Supplies	\$727.97			\$727.97
Total 1260 Physical Support	\$105,014.98			\$105,014.98

LEA : 129546003 Pine Grove Area SD

Printed 1/24/2018 12:48:39 PM

General Fund (10)

1280 Early Intervention Support

300 Purchased Professional and Technical Services

	<u>Elementary</u>	<u>Secondary</u>	<u>Federal</u>	<u>Total</u>
322 Professional Educational Services – lus			4,217.49	4,217.49
Total Purchased Professional and Technical Services			\$4,217.49	\$4,217.49
Total 1280 Early Intervention Support			\$4,217.49	\$4,217.49

LEA : 129546003 Pine Grove Area SD

Printed 1/24/2018 12:48:39 PM

General Fund (10)

1300 Vocational Education

500 Other Purchased Services

	<u>Elementary</u>	<u>Secondary</u>	<u>Federal</u>	<u>Total</u>
564 Tuition To Career and Technology Centers		547,572.00		547,572.00
Total Other Purchased Services		\$547,572.00		\$547,572.00
Total 1300 Vocational Education		\$547,572.00		\$547,572.00

LEA : 129546003 Pine Grove Area SD

Printed 1/24/2018 12:48:39 PM

General Fund (10)

1400 Other Instructional Programs – Elementary / Secondary	Elementary	Secondary	Federal	Total
100 Personnel Services – Salaries				
100 Personnel Services – Salaries	6,910.55	12,097.03	21,683.76	40,691.34
Total Personnel Services – Salaries	\$6,910.55	\$12,097.03	\$21,683.76	\$40,691.34
200 Personnel Services – Employee Benefits				
220 Social Security Contributions	528.70	1,011.22	1,658.74	3,198.66
230 PSERS Retirement Contributions	2,075.23	3,969.14	6,511.56	12,555.93
250 Unemployment Compensation	2.05	6.32	11.97	20.34
260 Workers' Compensation	58.05	111.06	182.06	351.17
Total Personnel Services – Employee Benefits	\$2,664.03	\$5,097.74	\$8,364.33	\$16,126.10
300 Purchased Professional and Technical Services				
322 Professional Educational Services – Ius	34,775.00	34,775.00		69,550.00
323 Professional Educational Services – Other Educational Agencies	62.50	1,158.25		1,220.75
Total Purchased Professional and Technical Services	\$34,837.50	\$35,933.25		\$70,770.75
500 Other Purchased Services				
510 Student Transportation Services	6,611.83	6,611.82		13,223.65
561 Tuition To Other School Districts Within the State	4,781.09	4,781.08		9,562.17
568 Tuition To Private Residential Rehabilitative Institutions (PRRI) [In-State] and Detention Centers	1,393.11	1,393.11		2,786.22
580 Travel	6.09	1,364.13		1,370.22
591 Services Purchased Locally			345.00	345.00
Total Other Purchased Services	\$12,792.12	\$14,150.14	\$345.00	\$27,287.26
600 Supplies				
610 General Supplies	4.81	4.80	48.12	57.73
620 Energy			11.61	11.61
630 Food	156.90	156.90		313.80
Total Supplies	\$161.71	\$161.70	\$59.73	\$383.14
800 Other Objects				
890 Miscellaneous Expenditures			274.00	274.00
Total Other Objects			\$274.00	\$274.00
Total 1400 Other Instructional Programs – Elementary / Secondary	\$57,365.91	\$67,439.86	\$30,726.82	\$155,532.59

LEA : 129546003 Pine Grove Area SD

Printed 1/24/2018 12:48:39 PM

General Fund (10)				
1430 Homebound Instruction	<u>Elementary</u>	<u>Secondary</u>	<u>Federal</u>	<u>Total</u>
100 <u>Personnel Services – Salaries</u>				
100 Personnel Services – Salaries	271.76	271.75		543.51
Total Personnel Services – Salaries	\$271.76	\$271.75		\$543.51
200 <u>Personnel Services – Employee Benefits</u>				
220 Social Security Contributions	20.79	106.50		127.29
230 PSERS Retirement Contributions	81.61	418.09		499.70
250 Unemployment Compensation		0.71		0.71
260 Workers' Compensation	2.29	11.70		13.99
Total Personnel Services – Employee Benefits	\$104.69	\$537.00		\$641.69
300 <u>Purchased Professional and Technical Services</u>				
323 Professional Educational Services – Other Educational Agencies	62.50	1,158.25		1,220.75
Total Purchased Professional and Technical Services	\$62.50	\$1,158.25		\$1,220.75
500 <u>Other Purchased Services</u>				
580 Travel		1,358.04		1,358.04
Total Other Purchased Services		\$1,358.04		\$1,358.04
Total 1430 Homebound Instruction	\$438.95	\$3,325.04		\$3,763.99

LEA : 129546003 Pine Grove Area SD

Printed 1/24/2018 12:48:39 PM

General Fund (10)

1440 Alternative Regular Education Programs	<u>Elementary</u>	<u>Secondary</u>	<u>Federal</u>	<u>Total</u>
300 <u>Purchased Professional and Technical Services</u>				
322 Professional Educational Services – lus	34,775.00	34,775.00		69,550.00
Total Purchased Professional and Technical Services	\$34,775.00	\$34,775.00		\$69,550.00
500 <u>Other Purchased Services</u>				
561 Tuition To Other School Districts Within the State	4,781.09	4,781.08		9,562.17
568 Tuition To Private Residential Rehabilitative Institutions (PRRI) [In-State] and Detention Centers	1,393.11	1,393.11		2,786.22
Total Other Purchased Services	\$6,174.20	\$6,174.19		\$12,348.39
Total 1440 Alternative Regular Education Programs	\$40,949.20	\$40,949.19		\$81,898.39

LEA : 129546003 Pine Grove Area SD

Printed 1/24/2018 12:48:39 PM

General Fund (10)

1441 Adjudicated / Court-Placed Programs

500 Other Purchased Services

561 Tuition To Other School Districts Within the State	4,781.09	4,781.08		9,562.17
Total Other Purchased Services	\$4,781.09	\$4,781.08		\$9,562.17
Total 1441 Adjudicated / Court-Placed Programs	\$4,781.09	\$4,781.08		\$9,562.17

LEA : 129546003 Pine Grove Area SD

Printed 1/24/2018 12:48:39 PM

General Fund (10)

1442 Alternative Education Programs	<u>Elementary</u>	<u>Secondary</u>	<u>Federal</u>	<u>Total</u>
300 <u>Purchased Professional and Technical Services</u>				
322 Professional Educational Services – lus	34,775.00	34,775.00		69,550.00
Total Purchased Professional and Technical Services	\$34,775.00	\$34,775.00		\$69,550.00
500 <u>Other Purchased Services</u>				
568 Tuition To Private Residential Rehabilitative Institutions (PRRI) [In-State] and Detention Centers	1,393.11	1,393.11		2,786.22
Total Other Purchased Services	\$1,393.11	\$1,393.11		\$2,786.22
Total 1442 Alternative Education Programs	\$36,168.11	\$36,168.11		\$72,336.22

LEA : 129546003 Pine Grove Area SD

Printed 1/24/2018 12:48:39 PM

General Fund (10)				
1450 Instructional Programs Outside the Established School Day	<u>Elementary</u>	<u>Secondary</u>	<u>Federal</u>	<u>Total</u>
100 <u>Personnel Services – Salaries</u>				
100 Personnel Services – Salaries	6,638.79	11,825.28	21,683.76	40,147.83
Total Personnel Services – Salaries	\$6,638.79	\$11,825.28	\$21,683.76	\$40,147.83
200 <u>Personnel Services – Employee Benefits</u>				
220 Social Security Contributions	507.91	904.72	1,658.74	3,071.37
230 PSERS Retirement Contributions	1,993.62	3,551.05	6,511.56	12,056.23
250 Unemployment Compensation	2.05	5.61	11.97	19.63
260 Workers' Compensation	55.76	99.36	182.06	337.18
Total Personnel Services – Employee Benefits	\$2,559.34	\$4,560.74	\$8,364.33	\$15,484.41
500 <u>Other Purchased Services</u>				
510 Student Transportation Services	6,611.83	6,611.82		13,223.65
580 Travel	6.09	6.09		12.18
591 Services Purchased Locally			345.00	345.00
Total Other Purchased Services	\$6,617.92	\$6,617.91	\$345.00	\$13,580.83
600 <u>Supplies</u>				
610 General Supplies	4.81	4.80	48.12	57.73
620 Energy			11.61	11.61
630 Food	156.90	156.90		313.80
Total Supplies	\$161.71	\$161.70	\$59.73	\$383.14
800 <u>Other Objects</u>				
890 Miscellaneous Expenditures			274.00	274.00
Total Other Objects			\$274.00	\$274.00
Total 1450 Instructional Programs Outside the Established School Day	\$15,977.76	\$23,165.63	\$30,726.82	\$69,870.21

LEA : 129546003 Pine Grove Area SD

Printed 1/24/2018 12:48:41 PM

General Fund (10)

2000 Support Services

Total

100 Personnel Services – Salaries	2,520,344.07
100 Personnel Services – Salaries	2,520,344.07
Total Personnel Services – Salaries	\$2,520,344.07
200 Personnel Services – Employee Benefits	
210 Group Insurance – Contracted Provider	886,861.44
220 Social Security Contributions	187,765.92
230 PSERS Retirement Contributions	721,705.41
250 Unemployment Compensation	1,945.68
260 Workers’ Compensation	21,170.52
299 All Other Employee Benefits	987.10
Total Personnel Services – Employee Benefits	\$1,820,436.07
300 Purchased Professional and Technical Services	
310 Official / Administrative Services	2,461.21
322 Professional Educational Services – lus	596,335.44
324 Professional Educational Services – Employee Training and Development Services	204,799.20
330 Other Professional Services	40,240.52
340 Technical Services	32,753.18
Total Purchased Professional and Technical Services	\$876,589.55
400 Purchased Property Services	
410 Cleaning Services	12,238.39
420 Utility Services	181,665.88
430 Repairs and Maintenance Services	46,422.87
440 Rentals	27,291.27
460 Extermination Services	1,692.90
Total Purchased Property Services	\$269,311.31
500 Other Purchased Services	
511 Student Transportation Services from Another LEA Within the State	9,625.00
513 Contracted Carriers	1,125,921.85
520 Insurance – General	27,021.00
522 Automotive Liability Insurance	4,960.00
523 General Property and Liability Insurance	73,759.00
529 Other Insurance	67,138.00
530 Communications	51,450.94
550 Printing and Binding	471.00
580 Travel	18,866.26
599 Other Miscellaneous Purchased Services	1,338.76
Total Other Purchased Services	\$1,380,551.81
600 Supplies	
610 General Supplies	256,622.71
620 Energy	118,416.30
630 Food	1,582.27
640 Books and Periodicals	5,645.38
650 Supplies & Fees – Technology Related	207.17

LEA : 129546003 Pine Grove Area SD

Printed 1/24/2018 12:48:41 PM

General Fund (10)

2000 Support Services

		<u>Total</u>
Total Supplies		\$382,473.83
800 <u>Other Objects</u>		
810 Dues and Fees		21,717.36
890 Miscellaneous Expenditures		15,300.00
Total Other Objects		\$37,017.36
Total 2000 Support Services		\$7,286,724.00

LEA : 129546003 Pine Grove Area SD

Printed 1/24/2018 12:48:41 PM

General Fund (10)				
2100 Support Services – Students	<u>Elementary</u>	<u>Secondary</u>	<u>Federal</u>	<u>Total</u>
100 <u>Personnel Services – Salaries</u>				
100 Personnel Services – Salaries	159,456.32	230,752.40		456,668.59
Total Personnel Services – Salaries	\$159,456.32	\$230,752.40		\$456,668.59
200 <u>Personnel Services – Employee Benefits</u>				
210 Group Insurance – Contracted Provider	25,779.06	53,940.78		95,217.84
220 Social Security Contributions	11,951.81	17,197.20		34,160.64
230 PSERS Retirement Contributions	47,884.82	69,294.92		137,137.39
250 Unemployment Compensation	74.39	134.06		239.34
260 Workers' Compensation	1,339.54	1,938.27		3,836.00
Total Personnel Services – Employee Benefits	\$87,029.62	\$142,505.23		\$270,591.21
500 <u>Other Purchased Services</u>				
580 Travel	806.26	2,607.80		6,306.88
Total Other Purchased Services	\$806.26	\$2,607.80		\$6,306.88
600 <u>Supplies</u>				
610 General Supplies	3,649.84	2,720.35		6,370.19
640 Books and Periodicals	224.75	512.75		737.50
Total Supplies	\$3,874.59	\$3,233.10		\$7,107.69
800 <u>Other Objects</u>				
810 Dues and Fees	590.26	1,446.83		2,587.09
Total Other Objects	\$590.26	\$1,446.83		\$2,587.09
Total 2100 Support Services – Students	\$251,757.05	\$380,545.36		\$743,261.46

LEA : 129546003 Pine Grove Area SD

Printed 1/24/2018 12:48:41 PM

General Fund (10)				
2120 Guidance Services	<u>Elementary</u>	<u>Secondary</u>	<u>Federal</u>	<u>Total</u>
100 <u>Personnel Services – Salaries</u>				
100 Personnel Services – Salaries	90,696.94	161,993.03		252,689.97
Total Personnel Services – Salaries	\$90,696.94	\$161,993.03		\$252,689.97
200 <u>Personnel Services – Employee Benefits</u>				
210 Group Insurance – Contracted Provider	7,747.02	35,908.74		43,655.76
220 Social Security Contributions	6,830.82	12,076.21		18,907.03
230 PSERS Retirement Contributions	27,236.36	48,646.47		75,882.83
250 Unemployment Compensation	44.17	103.85		148.02
260 Workers' Compensation	761.95	1,360.69		2,122.64
Total Personnel Services – Employee Benefits	\$42,620.32	\$98,095.96		\$140,716.28
500 <u>Other Purchased Services</u>				
580 Travel	398.94	2,200.48		2,599.42
Total Other Purchased Services	\$398.94	\$2,200.48		\$2,599.42
600 <u>Supplies</u>				
610 General Supplies	1,915.84	996.36		2,912.20
Total Supplies	\$1,915.84	\$996.36		\$2,912.20
800 <u>Other Objects</u>				
810 Dues and Fees	49.50	906.08		955.58
Total Other Objects	\$49.50	\$906.08		\$955.58
Total 2120 Guidance Services	\$135,681.54	\$264,191.91		\$399,873.45

LEA : 129546003 Pine Grove Area SD

Printed 1/24/2018 12:48:41 PM

General Fund (10)				
2140 Psychological Services	<u>Elementary</u>	<u>Secondary</u>	<u>Federal</u>	<u>Total</u>
100 <u>Personnel Services – Salaries</u>				
100 Personnel Services – Salaries	68,759.38	68,759.37		137,518.75
Total Personnel Services – Salaries	\$68,759.38	\$68,759.37		\$137,518.75
200 <u>Personnel Services – Employee Benefits</u>				
210 Group Insurance – Contracted Provider	18,032.04	18,032.04		36,064.08
220 Social Security Contributions	5,120.99	5,120.99		10,241.98
230 PSERS Retirement Contributions	20,648.46	20,648.45		41,296.91
250 Unemployment Compensation	30.22	30.21		60.43
260 Workers' Compensation	577.59	577.58		1,155.17
Total Personnel Services – Employee Benefits	\$44,409.30	\$44,409.27		\$88,818.57
500 <u>Other Purchased Services</u>				
580 Travel	407.32	407.32		814.64
Total Other Purchased Services	\$407.32	\$407.32		\$814.64
600 <u>Supplies</u>				
610 General Supplies	1,734.00	1,723.99		3,457.99
640 Books and Periodicals	224.75	512.75		737.50
Total Supplies	\$1,958.75	\$2,236.74		\$4,195.49
800 <u>Other Objects</u>				
810 Dues and Fees	540.76	540.75		1,081.51
Total Other Objects	\$540.76	\$540.75		\$1,081.51
Total 2140 Psychological Services	\$116,075.51	\$116,353.45		\$232,428.96

LEA : 129546003 Pine Grove Area SD

Printed 1/24/2018 12:48:41 PM

General Fund (10)

2160 Social Work Services

	<u>Elementary</u>	<u>Secondary</u>	<u>Federal</u>	<u>Total</u>
100 <u>Personnel Services – Salaries</u>				
100 Personnel Services – Salaries				66,459.87
Total Personnel Services – Salaries				\$66,459.87
200 <u>Personnel Services – Employee Benefits</u>				
210 Group Insurance – Contracted Provider				15,498.00
220 Social Security Contributions				5,011.63
230 PSERS Retirement Contributions				19,957.65
250 Unemployment Compensation				30.89
260 Workers' Compensation				558.19
Total Personnel Services – Employee Benefits				\$41,056.36
500 <u>Other Purchased Services</u>				
580 Travel				2,542.78
Total Other Purchased Services				\$2,542.78
800 <u>Other Objects</u>				
810 Dues and Fees				490.00
Total Other Objects				\$490.00
Total 2160 Social Work Services				\$110,549.01

LEA : 129546003 Pine Grove Area SD

Printed 1/24/2018 12:48:41 PM

General Fund (10)

2170 Student Accounting Services	<u>Elementary</u>	<u>Secondary</u>	<u>Federal</u>	<u>Total</u>
500 <u>Other Purchased Services</u>				
580 Travel				350.04
Total Other Purchased Services				\$350.04
800 <u>Other Objects</u>				
810 Dues and Fees				60.00
Total Other Objects				\$60.00
Total 2170 Student Accounting Services				\$410.04

LEA : 129546003 Pine Grove Area SD

Printed 1/24/2018 12:48:41 PM

General Fund (10)				
2200 Support Services – Instructional Staff	<u>Elementary</u>	<u>Secondary</u>	<u>Federal</u>	<u>Total</u>
100 <u>Personnel Services – Salaries</u>				
100 Personnel Services – Salaries	191,113.37	141,244.45		332,357.82
Total Personnel Services – Salaries	\$191,113.37	\$141,244.45		\$332,357.82
200 <u>Personnel Services – Employee Benefits</u>				
210 Group Insurance – Contracted Provider	40,235.20	32,601.28		72,836.48
220 Social Security Contributions	14,195.38	10,449.65		24,645.03
230 PSERS Retirement Contributions	57,391.43	42,415.80		99,807.23
250 Unemployment Compensation	133.53	88.46		221.99
260 Workers' Compensation	1,605.47	1,186.47		2,791.94
Total Personnel Services – Employee Benefits	\$113,561.01	\$86,741.66		\$200,302.67
300 <u>Purchased Professional and Technical Services</u>				
324 Professional Educational Services – Employee Training and Development Services	43,859.68	43,946.67		87,806.35
330 Other Professional Services	713.00	713.00		1,426.00
340 Technical Services	12,500.00	12,500.00		25,000.00
Total Purchased Professional and Technical Services	\$57,072.68	\$57,159.67		\$114,232.35
400 <u>Purchased Property Services</u>				
430 Repairs and Maintenance Services	5,714.17	6,308.67		12,022.84
440 Rentals	4,069.60	4,094.19		8,163.79
Total Purchased Property Services	\$9,783.77	\$10,402.86		\$20,186.63
500 <u>Other Purchased Services</u>				
530 Communications	9,829.29	9,829.27		19,658.56
550 Printing and Binding	235.50	235.50		471.00
580 Travel	2,732.12	3,204.75	949.85	6,886.72
Total Other Purchased Services	\$12,796.91	\$13,269.52	\$949.85	\$27,016.28
600 <u>Supplies</u>				
610 General Supplies	43,970.05	49,193.88		93,163.93
630 Food	306.09	434.64		740.73
640 Books and Periodicals	3,672.38	949.50		4,621.88
650 Supplies & Fees – Technology Related		207.17		207.17
Total Supplies	\$47,948.52	\$50,785.19		\$98,733.71
800 <u>Other Objects</u>				
810 Dues and Fees	880.94	880.94		1,761.88
Total Other Objects	\$880.94	\$880.94		\$1,761.88
Total 2200 Support Services – Instructional Staff	\$433,157.20	\$360,484.29	\$949.85	\$794,591.34

LEA : 129546003 Pine Grove Area SD

Printed 1/24/2018 12:48:41 PM

General Fund (10)

2220 Technology Support Services	Elementary	Secondary	Federal	Total
100 <u>Personnel Services – Salaries</u>				
100 Personnel Services – Salaries	26,199.28	26,199.27		52,398.55
Total Personnel Services – Salaries	\$26,199.28	\$26,199.27		\$52,398.55
200 <u>Personnel Services – Employee Benefits</u>				
210 Group Insurance – Contracted Provider	52.56	52.56		105.12
220 Social Security Contributions	2,004.17	2,004.17		4,008.34
230 PSERS Retirement Contributions	7,867.64	7,867.64		15,735.28
250 Unemployment Compensation	13.61	13.60		27.21
260 Workers' Compensation	220.09	220.08		440.17
Total Personnel Services – Employee Benefits	\$10,158.07	\$10,158.05		\$20,316.12
300 <u>Purchased Professional and Technical Services</u>				
324 Professional Educational Services – Employee Training and Development Services	42,500.00	42,500.00		85,000.00
340 Technical Services	12,500.00	12,500.00		25,000.00
Total Purchased Professional and Technical Services	\$55,000.00	\$55,000.00		\$110,000.00
400 <u>Purchased Property Services</u>				
430 Repairs and Maintenance Services	5,714.17	6,308.67		12,022.84
Total Purchased Property Services	\$5,714.17	\$6,308.67		\$12,022.84
500 <u>Other Purchased Services</u>				
530 Communications	7,764.04	7,764.03		15,528.07
Total Other Purchased Services	\$7,764.04	\$7,764.03		\$15,528.07
600 <u>Supplies</u>				
610 General Supplies	39,513.82	38,167.87		77,681.69
650 Supplies & Fees – Technology Related		207.17		207.17
Total Supplies	\$39,513.82	\$38,375.04		\$77,888.86
Total 2220 Technology Support Services	\$144,349.38	\$143,805.06		\$288,154.44

LEA : 129546003 Pine Grove Area SD

Printed 1/24/2018 12:48:41 PM

General Fund (10)					
2250 School Library Services		Elementary	Secondary	Federal	Total
100 <u>Personnel Services – Salaries</u>					
100	Personnel Services – Salaries	67,429.50	22,344.50		89,774.00
Total Personnel Services – Salaries		\$67,429.50	\$22,344.50		\$89,774.00
200 <u>Personnel Services – Employee Benefits</u>					
210	Group Insurance – Contracted Provider	17,786.82	10,152.90		27,939.72
220	Social Security Contributions	4,923.68	1,543.96		6,467.64
230	PSERS Retirement Contributions	20,249.05	6,710.07		26,959.12
250	Unemployment Compensation	45.06	14.80		59.86
260	Workers' Compensation	566.52	187.71		754.23
Total Personnel Services – Employee Benefits		\$43,571.13	\$18,609.44		\$62,180.57
400 <u>Purchased Property Services</u>					
440	Rentals		24.61		24.61
Total Purchased Property Services			\$24.61		\$24.61
500 <u>Other Purchased Services</u>					
550	Printing and Binding	235.50	235.50		471.00
Total Other Purchased Services		\$235.50	\$235.50		\$471.00
600 <u>Supplies</u>					
610	General Supplies	2,197.57	6,297.44		8,495.01
640	Books and Periodicals	3,672.38	949.50		4,621.88
Total Supplies		\$5,869.95	\$7,246.94		\$13,116.89
Total 2250 School Library Services		\$117,106.08	\$48,460.99		\$165,567.07

LEA : 129546003 Pine Grove Area SD

Printed 1/24/2018 12:48:41 PM

General Fund (10)

2260 Instruction and Curriculum Development Services	<u>Elementary</u>	<u>Secondary</u>	<u>Federal</u>	<u>Total</u>
100 <u>Personnel Services – Salaries</u>				
100 Personnel Services – Salaries	88,700.68	92,700.68		181,401.36
Total Personnel Services – Salaries	\$88,700.68	\$92,700.68		\$181,401.36
200 <u>Personnel Services – Employee Benefits</u>				
210 Group Insurance – Contracted Provider	22,395.82	22,395.82		44,791.64
220 Social Security Contributions	6,595.54	6,901.52		13,497.06
230 PSERS Retirement Contributions	26,636.91	27,838.09		54,475.00
250 Unemployment Compensation	60.08	60.06		120.14
260 Workers' Compensation	745.08	778.68		1,523.76
Total Personnel Services – Employee Benefits	\$56,433.43	\$57,974.17		\$114,407.60
300 <u>Purchased Professional and Technical Services</u>				
324 Professional Educational Services – Employee Training and Development Services	898.68	898.67		1,797.35
330 Other Professional Services	713.00	713.00		1,426.00
Total Purchased Professional and Technical Services	\$1,611.68	\$1,611.67		\$3,223.35
400 <u>Purchased Property Services</u>				
440 Rentals	4,069.60	4,069.58		8,139.18
Total Purchased Property Services	\$4,069.60	\$4,069.58		\$8,139.18
500 <u>Other Purchased Services</u>				
530 Communications	2,065.25	2,065.24		4,130.49
580 Travel	2,267.24	2,267.24		4,534.48
Total Other Purchased Services	\$4,332.49	\$4,332.48		\$8,664.97
600 <u>Supplies</u>				
610 General Supplies	341.75	3,916.13		4,257.88
630 Food	6.45	135.00		141.45
Total Supplies	\$348.20	\$4,051.13		\$4,399.33
800 <u>Other Objects</u>				
810 Dues and Fees	880.94	880.94		1,761.88
Total Other Objects	\$880.94	\$880.94		\$1,761.88
Total 2260 Instruction and Curriculum Development Services	\$156,377.02	\$165,620.65		\$321,997.67

LEA : 129546003 Pine Grove Area SD

Printed 1/24/2018 12:48:41 PM

General Fund (10)

2270 Instructional Staff Professional Development Services	<u>Elementary</u>	<u>Secondary</u>	<u>Federal</u>	<u>Total</u>
300 <u>Purchased Professional and Technical Services</u>				
324 Professional Educational Services – Employee Training and Development Services	461.00	548.00		1,009.00
Total Purchased Professional and Technical Services	\$461.00	\$548.00		\$1,009.00
500 <u>Other Purchased Services</u>				
580 Travel	464.88	937.51	949.85	2,352.24
Total Other Purchased Services	\$464.88	\$937.51	\$949.85	\$2,352.24
600 <u>Supplies</u>				
610 General Supplies	1,916.91	812.44		2,729.35
630 Food	299.64	299.64		599.28
Total Supplies	\$2,216.55	\$1,112.08		\$3,328.63
Total 2270 Instructional Staff Professional Development Services	\$3,142.43	\$2,597.59	\$949.85	\$6,689.87

LEA : 129546003 Pine Grove Area SD

Printed 1/24/2018 12:48:41 PM

General Fund (10)

2290 Other Instructional Staff Services	<u>Elementary</u>	<u>Secondary</u>	<u>Federal</u>	<u>Total</u>
100 <u>Personnel Services – Salaries</u>				
100 Personnel Services – Salaries	8,783.91			8,783.91
Total Personnel Services – Salaries	\$8,783.91			\$8,783.91
200 <u>Personnel Services – Employee Benefits</u>				
220 Social Security Contributions	671.99			671.99
230 PSERS Retirement Contributions	2,637.83			2,637.83
250 Unemployment Compensation	14.78			14.78
260 Workers' Compensation	73.78			73.78
Total Personnel Services – Employee Benefits	\$3,398.38			\$3,398.38
Total 2290 Other Instructional Staff Services	\$12,182.29			\$12,182.29

LEA : 129546003 Pine Grove Area SD

Printed 1/24/2018 12:48:41 PM

General Fund (10)				
2300 Support Services – Administration	<u>Elementary</u>	<u>Secondary</u>	<u>Federal</u>	<u>Total</u>
100 <u>Personnel Services – Salaries</u>				
100 Personnel Services – Salaries	180,502.37	192,901.45		524,033.80
Total Personnel Services – Salaries	\$180,502.37	\$192,901.45		\$524,033.80
200 <u>Personnel Services – Employee Benefits</u>				
210 Group Insurance – Contracted Provider	355,323.15	48,322.18		432,732.16
220 Social Security Contributions	13,543.86	14,410.83		39,256.85
230 PSERS Retirement Contributions	54,205.00	57,928.19		156,146.57
250 Unemployment Compensation	86.80	90.62		267.32
260 Workers' Compensation	1,516.11	1,620.31		4,401.67
Total Personnel Services – Employee Benefits	\$424,674.92	\$122,372.13		\$632,804.57
300 <u>Purchased Professional and Technical Services</u>				
310 Official / Administrative Services				2,461.21
324 Professional Educational Services – Employee Training and Development Services				1,359.32
330 Other Professional Services				35,642.52
340 Technical Services				1,087.20
Total Purchased Professional and Technical Services				\$40,550.25
400 <u>Purchased Property Services</u>				
440 Rentals	6,210.02	2,995.83		9,205.85
Total Purchased Property Services	\$6,210.02	\$2,995.83		\$9,205.85
500 <u>Other Purchased Services</u>				
520 Insurance – General				27,021.00
530 Communications				11,918.00
580 Travel		1,337.52		5,546.57
599 Other Miscellaneous Purchased Services				1,338.76
Total Other Purchased Services		\$1,337.52		\$45,824.33
600 <u>Supplies</u>				
610 General Supplies	24,340.27	12,171.33		52,195.50
630 Food		143.20		841.54
640 Books and Periodicals		36.00		36.00
Total Supplies	\$24,340.27	\$12,350.53		\$53,073.04
800 <u>Other Objects</u>				
810 Dues and Fees	892.50	892.50		3,725.00
890 Miscellaneous Expenditures				15,300.00
Total Other Objects	\$892.50	\$892.50		\$19,025.00
Total 2300 Support Services – Administration	\$636,620.08	\$332,849.96		\$1,324,516.84

LEA : 129546003 Pine Grove Area SD

Printed 1/24/2018 12:48:41 PM

General Fund (10)

2310 Board Services

Elementary Secondary Federal Total

300 <u>Purchased Professional and Technical Services</u>				
330 Other Professional Services				10,125.00
340 Technical Services				1,087.20
Total Purchased Professional and Technical Services				\$11,212.20
500 <u>Other Purchased Services</u>				
520 Insurance – General				27,021.00
599 Other Miscellaneous Purchased Services				1,338.76
Total Other Purchased Services				\$28,359.76
600 <u>Supplies</u>				
610 General Supplies				1,247.38
630 Food				698.34
Total Supplies				\$1,945.72
800 <u>Other Objects</u>				
810 Dues and Fees				50.00
Total Other Objects				\$50.00
Total 2310 Board Services				\$41,567.68

LEA : 129546003 Pine Grove Area SD

Printed 1/24/2018 12:48:41 PM

General Fund (10)

2330 Tax Assessment and Collection Services	<u>Elementary</u>	<u>Secondary</u>	<u>Federal</u>	<u>Total</u>
100 <u>Personnel Services – Salaries</u>				
100 Personnel Services – Salaries				4,065.26
Total Personnel Services – Salaries				\$4,065.26
200 <u>Personnel Services – Employee Benefits</u>				
220 Social Security Contributions				311.04
260 Workers’ Compensation				34.13
Total Personnel Services – Employee Benefits				\$345.17
300 <u>Purchased Professional and Technical Services</u>				
310 Official / Administrative Services				2,461.21
Total Purchased Professional and Technical Services				\$2,461.21
500 <u>Other Purchased Services</u>				
530 Communications				11,918.00
Total Other Purchased Services				\$11,918.00
Total 2330 Tax Assessment and Collection Services				\$18,789.64

LEA : 129546003 Pine Grove Area SD

Printed 1/24/2018 12:48:41 PM

General Fund (10)

2350 Legal and Accounting Services	<u>Elementary</u>	<u>Secondary</u>	<u>Federal</u>	<u>Total</u>
300 <u>Purchased Professional and Technical Services</u>				
330 Other Professional Services				25,517.52
Total Purchased Professional and Technical Services				\$25,517.52
Total 2350 Legal and Accounting Services				\$25,517.52

LEA : 129546003 Pine Grove Area SD

Printed 1/24/2018 12:48:41 PM

General Fund (10)

2360 Office of the Superintendent / Executive Director Services	<u>Elementary</u>	<u>Secondary</u>	<u>Federal</u>	<u>Total</u>
100 <u>Personnel Services – Salaries</u>				
100 Personnel Services – Salaries				146,564.72
Total Personnel Services – Salaries				\$146,564.72
200 <u>Personnel Services – Employee Benefits</u>				
210 Group Insurance – Contracted Provider				29,086.83
220 Social Security Contributions				10,991.12
230 PSERS Retirement Contributions				44,013.38
250 Unemployment Compensation				89.90
260 Workers' Compensation				1,231.12
Total Personnel Services – Employee Benefits				\$85,412.35
300 <u>Purchased Professional and Technical Services</u>				
324 Professional Educational Services – Employee Training and Development Services				1,359.32
Total Purchased Professional and Technical Services				\$1,359.32
500 <u>Other Purchased Services</u>				
580 Travel				4,209.05
Total Other Purchased Services				\$4,209.05
600 <u>Supplies</u>				
610 General Supplies				12,376.94
Total Supplies				\$12,376.94
800 <u>Other Objects</u>				
810 Dues and Fees				1,890.00
890 Miscellaneous Expenditures				15,300.00
Total Other Objects				\$17,190.00
Total 2360 Office of the Superintendent / Executive Director Services				\$267,112.38

LEA : 129546003 Pine Grove Area SD

Printed 1/24/2018 12:48:41 PM

General Fund (10)

2380 Office of the Principal Services	Elementary	Secondary	Federal	Total
100 <u>Personnel Services – Salaries</u>				
100 Personnel Services – Salaries	180,502.37	192,901.45		373,403.82
Total Personnel Services – Salaries	\$180,502.37	\$192,901.45		\$373,403.82
200 <u>Personnel Services – Employee Benefits</u>				
210 Group Insurance – Contracted Provider	355,323.15	48,322.18		403,645.33
220 Social Security Contributions	13,543.86	14,410.83		27,954.69
230 PSERS Retirement Contributions	54,205.00	57,928.19		112,133.19
250 Unemployment Compensation	86.80	90.62		177.42
260 Workers' Compensation	1,516.11	1,620.31		3,136.42
Total Personnel Services – Employee Benefits	\$424,674.92	\$122,372.13		\$547,047.05
400 <u>Purchased Property Services</u>				
440 Rentals	6,210.02	2,995.83		9,205.85
Total Purchased Property Services	\$6,210.02	\$2,995.83		\$9,205.85
500 <u>Other Purchased Services</u>				
580 Travel		1,337.52		1,337.52
Total Other Purchased Services		\$1,337.52		\$1,337.52
600 <u>Supplies</u>				
610 General Supplies	24,340.27	12,171.33		36,511.60
630 Food		143.20		143.20
640 Books and Periodicals		36.00		36.00
Total Supplies	\$24,340.27	\$12,350.53		\$36,690.80
800 <u>Other Objects</u>				
810 Dues and Fees	892.50	892.50		1,785.00
Total Other Objects	\$892.50	\$892.50		\$1,785.00
Total 2380 Office of the Principal Services	\$636,620.08	\$332,849.96		\$969,470.04

LEA : 129546003 Pine Grove Area SD

Printed 1/24/2018 12:48:41 PM

General Fund (10)

2390 Other Administration Services	<u>Elementary</u>	<u>Secondary</u>	<u>Federal</u>	<u>Total</u>
600 <u>Supplies</u>				
610 General Supplies				2,059.58
Total Supplies				\$2,059.58
Total 2390 Other Administration Services				\$2,059.58

LEA : 129546003 Pine Grove Area SD

Printed 1/24/2018 12:48:41 PM

General Fund (10)				
2400 Support Services – Pupil Health	<u>Elementary</u>	<u>Secondary</u>	<u>Federal</u>	<u>Total</u>
100 <u>Personnel Services – Salaries</u>				
100 Personnel Services – Salaries				129,398.56
Total Personnel Services – Salaries				\$129,398.56
200 <u>Personnel Services – Employee Benefits</u>				
210 Group Insurance – Contracted Provider				41,546.88
220 Social Security Contributions				8,923.28
230 PSERS Retirement Contributions				38,092.49
250 Unemployment Compensation				93.99
260 Workers' Compensation				1,086.90
Total Personnel Services – Employee Benefits				\$89,743.54
300 <u>Purchased Professional and Technical Services</u>				
330 Other Professional Services				1,622.00
Total Purchased Professional and Technical Services				\$1,622.00
400 <u>Purchased Property Services</u>				
430 Repairs and Maintenance Services				610.00
Total Purchased Property Services				\$610.00
500 <u>Other Purchased Services</u>				
580 Travel				58.85
Total Other Purchased Services				\$58.85
600 <u>Supplies</u>				
610 General Supplies				3,966.49
Total Supplies				\$3,966.49
Total 2400 Support Services – Pupil Health				\$225,399.44

LEA : 129546003 Pine Grove Area SD

Printed 1/24/2018 12:48:41 PM

General Fund (10)

2420 Medical Services

<u>Elementary</u>	<u>Secondary</u>	<u>Federal</u>	<u>Total</u>
-------------------	------------------	----------------	--------------

300 Purchased Professional and Technical Services

330 Other Professional Services			1,490.00
---------------------------------	--	--	----------

Total Purchased Professional and Technical Services			\$1,490.00
--	--	--	-------------------

Total 2420 Medical Services			\$1,490.00
------------------------------------	--	--	-------------------

LEA : 129546003 Pine Grove Area SD

Printed 1/24/2018 12:48:41 PM

General Fund (10)

2430 Dental Services

<u>Elementary</u>	<u>Secondary</u>	<u>Federal</u>	<u>Total</u>
-------------------	------------------	----------------	--------------

300 Purchased Professional and Technical Services

330 Other Professional Services			132.00
---------------------------------	--	--	--------

Total Purchased Professional and Technical Services			\$132.00
--	--	--	-----------------

Total 2430 Dental Services			\$132.00
-----------------------------------	--	--	-----------------

LEA : 129546003 Pine Grove Area SD

Printed 1/24/2018 12:48:41 PM

General Fund (10)				
2440 Nursing Services				
	<u>Elementary</u>	<u>Secondary</u>	<u>Federal</u>	<u>Total</u>
100 <u>Personnel Services – Salaries</u>				
100 Personnel Services – Salaries				129,398.56
Total Personnel Services – Salaries				\$129,398.56
200 <u>Personnel Services – Employee Benefits</u>				
210 Group Insurance – Contracted Provider				41,546.88
220 Social Security Contributions				8,923.28
230 PSERS Retirement Contributions				38,092.49
250 Unemployment Compensation				93.99
260 Workers' Compensation				1,086.90
Total Personnel Services – Employee Benefits				\$89,743.54
400 <u>Purchased Property Services</u>				
430 Repairs and Maintenance Services				610.00
Total Purchased Property Services				\$610.00
500 <u>Other Purchased Services</u>				
580 Travel				58.85
Total Other Purchased Services				\$58.85
600 <u>Supplies</u>				
610 General Supplies				3,966.49
Total Supplies				\$3,966.49
Total 2440 Nursing Services				\$223,777.44

LEA : 129546003 Pine Grove Area SD

Printed 1/24/2018 12:48:41 PM

General Fund (10)				
2500 Support Services – Business	<u>Elementary</u>	<u>Secondary</u>	<u>Federal</u>	<u>Total</u>
100 <u>Personnel Services – Salaries</u>				
100 Personnel Services – Salaries				133,534.13
Total Personnel Services – Salaries				\$133,534.13
200 <u>Personnel Services – Employee Benefits</u>				
210 Group Insurance – Contracted Provider				31,541.11
220 Social Security Contributions				10,018.28
230 PSERS Retirement Contributions				38,228.26
250 Unemployment Compensation				119.11
260 Workers' Compensation				1,121.61
Total Personnel Services – Employee Benefits				\$81,028.37
300 <u>Purchased Professional and Technical Services</u>				
324 Professional Educational Services – Employee Training and Development Services				115,513.53
330 Other Professional Services				1,550.00
340 Technical Services				1,980.00
Total Purchased Professional and Technical Services				\$119,043.53
400 <u>Purchased Property Services</u>				
440 Rentals				5,916.45
Total Purchased Property Services				\$5,916.45
500 <u>Other Purchased Services</u>				
530 Communications				2,750.00
Total Other Purchased Services				\$2,750.00
600 <u>Supplies</u>				
610 General Supplies				2,011.02
640 Books and Periodicals				250.00
Total Supplies				\$2,261.02
800 <u>Other Objects</u>				
810 Dues and Fees				13,288.97
Total Other Objects				\$13,288.97
Total 2500 Support Services – Business				\$357,822.47

LEA : 129546003 Pine Grove Area SD

Printed 1/24/2018 12:48:41 PM

General Fund (10)				
2510 Fiscal Services	<u>Elementary</u>	<u>Secondary</u>	<u>Federal</u>	<u>Total</u>
100 <u>Personnel Services – Salaries</u>				
100 Personnel Services – Salaries				133,534.13
Total Personnel Services – Salaries				\$133,534.13
200 <u>Personnel Services – Employee Benefits</u>				
210 Group Insurance – Contracted Provider				31,541.11
220 Social Security Contributions				10,018.28
230 PSERS Retirement Contributions				38,228.26
250 Unemployment Compensation				119.11
260 Workers' Compensation				1,121.61
Total Personnel Services – Employee Benefits				\$81,028.37
300 <u>Purchased Professional and Technical Services</u>				
324 Professional Educational Services – Employee Training and Development Services				115,513.53
340 Technical Services				1,980.00
Total Purchased Professional and Technical Services				\$117,493.53
400 <u>Purchased Property Services</u>				
440 Rentals				5,916.45
Total Purchased Property Services				\$5,916.45
500 <u>Other Purchased Services</u>				
530 Communications				2,750.00
Total Other Purchased Services				\$2,750.00
600 <u>Supplies</u>				
610 General Supplies				2,011.02
640 Books and Periodicals				250.00
Total Supplies				\$2,261.02
800 <u>Other Objects</u>				
810 Dues and Fees				13,288.97
Total Other Objects				\$13,288.97
Total 2510 Fiscal Services				\$356,272.47

LEA : 129546003 Pine Grove Area SD

Printed 1/24/2018 12:48:41 PM

General Fund (10)				
2511 Supervision of Fiscal Services - Head of Component	<u>Elementary</u>	<u>Secondary</u>	<u>Federal</u>	<u>Total</u>
100 <u>Personnel Services – Salaries</u>				
100 Personnel Services – Salaries				10,039.69
Total Personnel Services – Salaries				\$10,039.69
200 <u>Personnel Services – Employee Benefits</u>				
210 Group Insurance – Contracted Provider				1,699.99
220 Social Security Contributions				751.29
230 PSERS Retirement Contributions				2,767.80
250 Unemployment Compensation				29.99
260 Workers' Compensation				84.34
Total Personnel Services – Employee Benefits				\$5,333.41
300 <u>Purchased Professional and Technical Services</u>				
324 Professional Educational Services – Employee Training and Development Services				92,564.58
Total Purchased Professional and Technical Services				\$92,564.58
400 <u>Purchased Property Services</u>				
440 Rentals				5,916.45
Total Purchased Property Services				\$5,916.45
500 <u>Other Purchased Services</u>				
530 Communications				2,750.00
Total Other Purchased Services				\$2,750.00
600 <u>Supplies</u>				
610 General Supplies				2,011.02
640 Books and Periodicals				250.00
Total Supplies				\$2,261.02
800 <u>Other Objects</u>				
810 Dues and Fees				13.00
Total Other Objects				\$13.00
Total 2511 Supervision of Fiscal Services - Head of Component				\$118,878.15

LEA : 129546003 Pine Grove Area SD

Printed 1/24/2018 12:48:41 PM

General Fund (10)

2513 Receiving and Disbursing Funds Services

Elementary Secondary Federal Total

100 <u>Personnel Services – Salaries</u>				
100 Personnel Services – Salaries				43,960.84
Total Personnel Services – Salaries				\$43,960.84
200 <u>Personnel Services – Employee Benefits</u>				
210 Group Insurance – Contracted Provider				938.52
220 Social Security Contributions				3,362.71
230 PSERS Retirement Contributions				11,576.54
250 Unemployment Compensation				28.72
260 Workers' Compensation				369.35
Total Personnel Services – Employee Benefits				\$16,275.84
800 <u>Other Objects</u>				
810 Dues and Fees				13,275.97
Total Other Objects				\$13,275.97
Total 2513 Receiving and Disbursing Funds Services				\$73,512.65

LEA : 129546003 Pine Grove Area SD

Printed 1/24/2018 12:48:41 PM

General Fund (10)

2514 Payroll Services

<u>Elementary</u>	<u>Secondary</u>	<u>Federal</u>	<u>Total</u>
-------------------	------------------	----------------	--------------

300 Purchased Professional and Technical Services

324 Professional Educational Services – Employee Training and Development Services			22,948.95
--	--	--	-----------

Total Purchased Professional and Technical Services			\$22,948.95
--	--	--	--------------------

Total 2514 Payroll Services			\$22,948.95
------------------------------------	--	--	--------------------

LEA : 129546003 Pine Grove Area SD

Printed 1/24/2018 12:48:41 PM

General Fund (10)

2515 Financial Accounting Services	<u>Elementary</u>	<u>Secondary</u>	<u>Federal</u>	<u>Total</u>
100 <u>Personnel Services – Salaries</u>				
100 Personnel Services – Salaries				79,533.60
Total Personnel Services – Salaries				\$79,533.60
200 <u>Personnel Services – Employee Benefits</u>				
210 Group Insurance – Contracted Provider				28,902.60
220 Social Security Contributions				5,904.28
230 PSERS Retirement Contributions				23,883.92
250 Unemployment Compensation				60.40
260 Workers' Compensation				667.92
Total Personnel Services – Employee Benefits				\$59,419.12
300 <u>Purchased Professional and Technical Services</u>				
340 Technical Services				1,980.00
Total Purchased Professional and Technical Services				\$1,980.00
Total 2515 Financial Accounting Services				\$140,932.72

LEA : 129546003 Pine Grove Area SD

Printed 1/24/2018 12:48:41 PM

General Fund (10)

2590 Other Support Services – Business

Elementary

Secondary

Federal

Total

300 Purchased Professional and Technical Services

330 Other Professional Services

1,550.00

Total Purchased Professional and Technical Services				\$1,550.00
Total 2590 Other Support Services – Business				\$1,550.00

LEA : 129546003 Pine Grove Area SD

Printed 1/24/2018 12:48:41 PM

General Fund (10)				
2600 Operation and Maintenance of Plant Services	<u>Elementary</u>	<u>Secondary</u>	<u>Federal</u>	<u>Total</u>
100 <u>Personnel Services – Salaries</u>				
100 Personnel Services – Salaries				791,537.40
Total Personnel Services – Salaries				\$791,537.40
200 <u>Personnel Services – Employee Benefits</u>				
210 Group Insurance – Contracted Provider				211,886.65
220 Social Security Contributions				59,183.96
230 PSERS Retirement Contributions				236,593.49
250 Unemployment Compensation				858.83
260 Workers' Compensation				6,648.19
Total Personnel Services – Employee Benefits				\$515,171.12
300 <u>Purchased Professional and Technical Services</u>				
324 Professional Educational Services – Employee Training and Development Services				120.00
340 Technical Services				4,685.98
Total Purchased Professional and Technical Services				\$4,805.98
400 <u>Purchased Property Services</u>				
410 Cleaning Services				12,238.39
420 Utility Services				181,665.88
430 Repairs and Maintenance Services				33,790.03
440 Rentals				533.50
460 Extermination Services				1,692.90
Total Purchased Property Services				\$229,920.70
500 <u>Other Purchased Services</u>				
522 Automotive Liability Insurance				4,960.00
523 General Property and Liability Insurance				73,759.00
529 Other Insurance				67,138.00
530 Communications				17,124.38
580 Travel				67.24
Total Other Purchased Services				\$163,048.62
600 <u>Supplies</u>				
610 General Supplies	48,427.62	50,487.96		98,915.58
620 Energy				118,416.30
Total Supplies	\$48,427.62	\$50,487.96		\$217,331.88
800 <u>Other Objects</u>				
810 Dues and Fees				354.42
Total Other Objects				\$354.42
Total 2600 Operation and Maintenance of Plant Services	\$48,427.62	\$50,487.96		\$1,922,170.12

LEA : 129546003 Pine Grove Area SD

Printed 1/24/2018 12:48:41 PM

General Fund (10)				
2610 Supervision of Operation and Maintenance of Plant Services	<u>Elementary</u>	<u>Secondary</u>	<u>Federal</u>	<u>Total</u>
100 <u>Personnel Services – Salaries</u>				
100 Personnel Services – Salaries				104,902.40
Total Personnel Services – Salaries				\$104,902.40
200 <u>Personnel Services – Employee Benefits</u>				
210 Group Insurance – Contracted Provider				28,552.56
220 Social Security Contributions				7,808.61
230 PSERS Retirement Contributions				31,502.36
250 Unemployment Compensation				60.44
260 Workers' Compensation				881.30
Total Personnel Services – Employee Benefits				\$68,805.27
500 <u>Other Purchased Services</u>				
580 Travel				10.50
Total Other Purchased Services				\$10.50
600 <u>Supplies</u>				
610 General Supplies		2,060.39		2,060.39
Total Supplies		\$2,060.39		\$2,060.39
800 <u>Other Objects</u>				
810 Dues and Fees				179.42
Total Other Objects				\$179.42
Total 2610 Supervision of Operation and Maintenance of Plant Services		\$2,060.39		\$175,957.98

LEA : 129546003 Pine Grove Area SD

Printed 1/24/2018 12:48:41 PM

General Fund (10)				
2611 Supervision of Operation and Maintenance of Plant Services – Head of Component	<u>Elementary</u>	<u>Secondary</u>	<u>Federal</u>	<u>Total</u>
100 <u>Personnel Services – Salaries</u>				
100 Personnel Services – Salaries				104,902.40
Total Personnel Services – Salaries				\$104,902.40
200 <u>Personnel Services – Employee Benefits</u>				
210 Group Insurance – Contracted Provider				28,552.56
220 Social Security Contributions				7,808.61
230 PSERS Retirement Contributions				31,502.36
250 Unemployment Compensation				60.44
260 Workers' Compensation				881.30
Total Personnel Services – Employee Benefits				\$68,805.27
500 <u>Other Purchased Services</u>				
580 Travel				10.50
Total Other Purchased Services				\$10.50
600 <u>Supplies</u>				
610 General Supplies		2,060.39		2,060.39
Total Supplies		\$2,060.39		\$2,060.39
800 <u>Other Objects</u>				
810 Dues and Fees				179.42
Total Other Objects				\$179.42
Total 2611 Supervision of Operation and Maintenance of Plant Services – Head of Component		\$2,060.39		\$175,957.98

LEA : 129546003 Pine Grove Area SD

Printed 1/24/2018 12:48:41 PM

General Fund (10)				
2620 Operation of Buildings Services	<u>Elementary</u>	<u>Secondary</u>	<u>Federal</u>	<u>Total</u>
100 <u>Personnel Services – Salaries</u>				
100 Personnel Services – Salaries				587,119.22
Total Personnel Services – Salaries				\$587,119.22
200 <u>Personnel Services – Employee Benefits</u>				
210 Group Insurance – Contracted Provider				167,738.05
220 Social Security Contributions				43,850.69
230 PSERS Retirement Contributions				175,206.61
250 Unemployment Compensation				741.84
260 Workers' Compensation				4,930.93
Total Personnel Services – Employee Benefits				\$392,468.12
300 <u>Purchased Professional and Technical Services</u>				
340 Technical Services				3,808.00
Total Purchased Professional and Technical Services				\$3,808.00
400 <u>Purchased Property Services</u>				
410 Cleaning Services				12,238.39
420 Utility Services				181,665.88
430 Repairs and Maintenance Services				28,743.76
440 Rentals				533.50
460 Extermination Services				1,692.90
Total Purchased Property Services				\$224,874.43
500 <u>Other Purchased Services</u>				
523 General Property and Liability Insurance				73,759.00
529 Other Insurance				67,138.00
530 Communications				17,124.38
580 Travel				32.66
Total Other Purchased Services				\$158,054.04
600 <u>Supplies</u>				
610 General Supplies	41,000.25	41,000.22		82,000.47
620 Energy				113,443.09
Total Supplies	\$41,000.25	\$41,000.22		\$195,443.56
Total 2620 Operation of Buildings Services	\$41,000.25	\$41,000.22		\$1,561,767.37

LEA : 129546003 Pine Grove Area SD

Printed 1/24/2018 12:48:41 PM

General Fund (10)

2630 Care and Upkeep of Grounds Services	Elementary	Secondary	Federal	Total
100 <u>Personnel Services – Salaries</u>				
100 Personnel Services – Salaries				99,515.78
Total Personnel Services – Salaries				\$99,515.78
200 <u>Personnel Services – Employee Benefits</u>				
210 Group Insurance – Contracted Provider				15,596.04
220 Social Security Contributions				7,524.66
230 PSERS Retirement Contributions				29,884.52
250 Unemployment Compensation				56.55
260 Workers' Compensation				835.96
Total Personnel Services – Employee Benefits				\$53,897.73
300 <u>Purchased Professional and Technical Services</u>				
324 Professional Educational Services – Employee Training and Development Services				120.00
340 Technical Services				877.98
Total Purchased Professional and Technical Services				\$997.98
400 <u>Purchased Property Services</u>				
430 Repairs and Maintenance Services				233.42
Total Purchased Property Services				\$233.42
500 <u>Other Purchased Services</u>				
580 Travel				24.08
Total Other Purchased Services				\$24.08
600 <u>Supplies</u>				
610 General Supplies	6,363.81	6,363.80		12,727.61
620 Energy				1,079.69
Total Supplies	\$6,363.81	\$6,363.80		\$13,807.30
800 <u>Other Objects</u>				
810 Dues and Fees				175.00
Total Other Objects				\$175.00
Total 2630 Care and Upkeep of Grounds Services	\$6,363.81	\$6,363.80		\$168,651.29

LEA : 129546003 Pine Grove Area SD

Printed 1/24/2018 12:48:41 PM

General Fund (10)				
2650 Vehicle Operation and Maintenance Services (Other Than Student Transportation Vehicles)	<u>Elementary</u>	<u>Secondary</u>	<u>Federal</u>	<u>Total</u>
400 <u>Purchased Property Services</u>				
430 Repairs and Maintenance Services				3,142.85
Total Purchased Property Services				\$3,142.85
500 <u>Other Purchased Services</u>				
522 Automotive Liability Insurance				4,960.00
Total Other Purchased Services				\$4,960.00
600 <u>Supplies</u>				
610 General Supplies	1,063.56	1,063.55		2,127.11
620 Energy				3,893.52
Total Supplies	\$1,063.56	\$1,063.55		\$6,020.63
Total 2650 Vehicle Operation and Maintenance Services (Other Than Student Transportation Vehicles)	\$1,063.56	\$1,063.55		\$14,123.48

LEA : 129546003 Pine Grove Area SD

Printed 1/24/2018 12:48:41 PM

General Fund (10)

2660 Safety and Security Services	<u>Elementary</u>	<u>Secondary</u>	<u>Federal</u>	<u>Total</u>
400 <u>Purchased Property Services</u>				
430 Repairs and Maintenance Services				1,670.00
Total Purchased Property Services				\$1,670.00
Total 2660 Safety and Security Services				\$1,670.00

LEA : 129546003 Pine Grove Area SD

Printed 1/24/2018 12:48:41 PM

General Fund (10)

2700 Student Transportation Services	<u>Elementary</u>	<u>Secondary</u>	<u>Federal</u>	<u>Total</u>
100 <u>Personnel Services – Salaries</u>				
100 Personnel Services – Salaries				55,490.72
Total Personnel Services – Salaries				\$55,490.72
200 <u>Personnel Services – Employee Benefits</u>				
210 Group Insurance – Contracted Provider				913.32
220 Social Security Contributions				4,245.00
230 PSERS Retirement Contributions				15,699.98
250 Unemployment Compensation				67.11
260 Workers' Compensation				466.04
Total Personnel Services – Employee Benefits				\$21,391.45
500 <u>Other Purchased Services</u>				
511 Student Transportation Services from Another LEA Within the State				9,625.00
513 Contracted Carriers				1,125,921.85
Total Other Purchased Services				\$1,135,546.85
Total 2700 Student Transportation Services				\$1,212,429.02

LEA : 129546003 Pine Grove Area SD

Printed 1/24/2018 12:48:41 PM

General Fund (10)

2720 Vehicle Operation Services	<u>Elementary</u>	<u>Secondary</u>	<u>Federal</u>	<u>Total</u>
100 <u>Personnel Services – Salaries</u>				
100 Personnel Services – Salaries				39,766.80
Total Personnel Services – Salaries				\$39,766.80
200 <u>Personnel Services – Employee Benefits</u>				
210 Group Insurance – Contracted Provider				913.32
220 Social Security Contributions				3,042.10
230 PSERS Retirement Contributions				11,941.96
250 Unemployment Compensation				26.36
260 Workers' Compensation				333.96
Total Personnel Services – Employee Benefits				\$16,257.70
500 <u>Other Purchased Services</u>				
513 Contracted Carriers				1,125,921.85
Total Other Purchased Services				\$1,125,921.85
Total 2720 Vehicle Operation Services				\$1,181,946.35

LEA : 129546003 Pine Grove Area SD

Printed 1/24/2018 12:48:41 PM

General Fund (10)

2730 Monitoring Services

Elementary Secondary Federal Total

100 <u>Personnel Services – Salaries</u>				
100 Personnel Services – Salaries				15,723.92
Total Personnel Services – Salaries				\$15,723.92
200 <u>Personnel Services – Employee Benefits</u>				
220 Social Security Contributions				1,202.90
230 PSERS Retirement Contributions				3,758.02
250 Unemployment Compensation				40.75
260 Workers' Compensation				132.08
Total Personnel Services – Employee Benefits				\$5,133.75
Total 2730 Monitoring Services				\$20,857.67

LEA : 129546003 Pine Grove Area SD

Printed 1/24/2018 12:48:41 PM

General Fund (10)

2750 Nonpublic Transportation

<u>Elementary</u>	<u>Secondary</u>	<u>Federal</u>	<u>Total</u>
-------------------	------------------	----------------	--------------

500 Other Purchased Services

511 Student Transportation Services from Another LEA Within the State			9,625.00
---	--	--	----------

Total Other Purchased Services			\$9,625.00
---------------------------------------	--	--	-------------------

Total 2750 Nonpublic Transportation			\$9,625.00
--	--	--	-------------------

LEA : 129546003 Pine Grove Area SD

Printed 1/24/2018 12:48:41 PM

General Fund (10)

2800 Support Services – Central	<u>Elementary</u>	<u>Secondary</u>	<u>Federal</u>	<u>Total</u>
100 <u>Personnel Services – Salaries</u>				
100 Personnel Services – Salaries				97,323.05
Total Personnel Services – Salaries				\$97,323.05
200 <u>Personnel Services – Employee Benefits</u>				
210 Group Insurance – Contracted Provider				187.00
220 Social Security Contributions				7,332.88
250 Unemployment Compensation				77.99
260 Workers' Compensation				818.17
299 All Other Employee Benefits				987.10
Total Personnel Services – Employee Benefits				\$9,403.14
Total 2800 Support Services – Central				\$106,726.19

LEA : 129546003 Pine Grove Area SD

Printed 1/24/2018 12:48:41 PM

General Fund (10)

2830 Staff Services

Elementary Secondary Federal Total

100 <u>Personnel Services – Salaries</u>				
100 Personnel Services – Salaries				97,323.05
Total Personnel Services – Salaries				\$97,323.05
200 <u>Personnel Services – Employee Benefits</u>				
210 Group Insurance – Contracted Provider				187.00
220 Social Security Contributions				7,332.88
250 Unemployment Compensation				77.99
260 Workers' Compensation				818.17
299 All Other Employee Benefits				987.10
Total Personnel Services – Employee Benefits				\$9,403.14
Total 2830 Staff Services				\$106,726.19

LEA : 129546003 Pine Grove Area SD

Printed 1/24/2018 12:48:41 PM

General Fund (10)

2831 Supervision of Staff Services	<u>Elementary</u>	<u>Secondary</u>	<u>Federal</u>	<u>Total</u>
100 <u>Personnel Services – Salaries</u>				
100 Personnel Services – Salaries				97,323.05
Total Personnel Services – Salaries				\$97,323.05
200 <u>Personnel Services – Employee Benefits</u>				
210 Group Insurance – Contracted Provider				187.00
220 Social Security Contributions				7,332.88
250 Unemployment Compensation				77.99
260 Workers' Compensation				818.17
299 All Other Employee Benefits				987.10
Total Personnel Services – Employee Benefits				\$9,403.14
Total 2831 Supervision of Staff Services				\$106,726.19

Total

596,335.44

\$596,335.44

3,471.68

\$3,471.68

\$599,807.12

LEA : 129546003 Pine Grove Area SD

Printed 1/24/2018 12:48:41 PM

General Fund (10)

2910 Support Services Not Listed Elsewhere In the 2000 Series

Elementary Secondary Federal Total

300 Purchased Professional and Technical Services

322 Professional Educational Services – lus 119,334.04 596,335.44

Total Purchased Professional and Technical Services \$119,334.04 \$596,335.44

400 Purchased Property Services

440 Rentals 3,471.68

Total Purchased Property Services \$3,471.68

Total 2910 Support Services Not Listed Elsewhere In the 2000 Series \$119,334.04 \$599,807.12

LEA : 129546003 Pine Grove Area SD

Printed 1/24/2018 12:48:43 PM

General Fund (10)	
3000 Operation of Non-Instructional Services	<u>Total</u>
100 <u>Personnel Services – Salaries</u>	
100 Personnel Services – Salaries	267,371.43
Total Personnel Services – Salaries	\$267,371.43
200 <u>Personnel Services – Employee Benefits</u>	
210 Group Insurance – Contracted Provider	10,171.08
220 Social Security Contributions	20,360.32
230 PSERS Retirement Contributions	74,874.94
250 Unemployment Compensation	316.65
260 Workers’ Compensation	2,245.92
Total Personnel Services – Employee Benefits	\$107,968.91
300 <u>Purchased Professional and Technical Services</u>	
324 Professional Educational Services – Employee Training and Development Services	37,890.58
390 Other Purchased Professional and Technical Services	22,929.50
Total Purchased Professional and Technical Services	\$60,820.08
400 <u>Purchased Property Services</u>	
420 Utility Services	8,541.14
430 Repairs and Maintenance Services	12,835.85
440 Rentals	1,460.00
Total Purchased Property Services	\$22,836.99
500 <u>Other Purchased Services</u>	
550 Printing and Binding	149.20
580 Travel	4,246.97
Total Other Purchased Services	\$4,396.17
600 <u>Supplies</u>	
610 General Supplies	34,273.68
620 Energy	799.48
630 Food	859.20
Total Supplies	\$35,932.36
700 <u>Property</u>	
752 Capital Equipment – Original and Additional	4,906.70
Total Property	\$4,906.70
800 <u>Other Objects</u>	
810 Dues and Fees	1,563.00
890 Miscellaneous Expenditures	6,760.00
Total Other Objects	\$8,323.00
Total 3000 Operation of Non-Instructional Services	\$512,555.64

LEA : 129546003 Pine Grove Area SD

Printed 1/24/2018 12:48:43 PM

General Fund (10)				
3200 Student Activities	<u>Elementary</u>	<u>Secondary</u>	<u>Federal</u>	<u>Total</u>
100 <u>Personnel Services – Salaries</u>				
100 Personnel Services – Salaries				267,371.43
Total Personnel Services – Salaries				\$267,371.43
200 <u>Personnel Services – Employee Benefits</u>				
210 Group Insurance – Contracted Provider				10,171.08
220 Social Security Contributions				20,360.32
230 PSERS Retirement Contributions				74,874.94
250 Unemployment Compensation				316.65
260 Workers' Compensation				2,245.92
Total Personnel Services – Employee Benefits				\$107,968.91
300 <u>Purchased Professional and Technical Services</u>				
324 Professional Educational Services – Employee Training and Development Services				37,890.58
390 Other Purchased Professional and Technical Services				22,929.50
Total Purchased Professional and Technical Services				\$60,820.08
400 <u>Purchased Property Services</u>				
420 Utility Services				8,541.14
430 Repairs and Maintenance Services				12,835.85
440 Rentals				1,460.00
Total Purchased Property Services				\$22,836.99
500 <u>Other Purchased Services</u>				
550 Printing and Binding				149.20
580 Travel				4,246.97
Total Other Purchased Services				\$4,396.17
600 <u>Supplies</u>				
610 General Supplies				34,273.68
620 Energy				799.48
630 Food				859.20
Total Supplies				\$35,932.36
700 <u>Property</u>				
752 Capital Equipment – Original and Additional				4,906.70
Total Property				\$4,906.70
800 <u>Other Objects</u>				
810 Dues and Fees				1,563.00
890 Miscellaneous Expenditures				6,760.00
Total Other Objects				\$8,323.00
Total 3200 Student Activities				\$512,555.64

LEA : 129546003 Pine Grove Area SD

Printed 1/24/2018 12:48:44 PM

General Fund (10)

4000 Facilities Acquisition, Construction and Improvement Services

Total

700 <u>Property</u>	
720 Buildings	2,306,206.05
Total Property	\$2,306,206.05
Total 4000 Facilities Acquisition, Construction and Improvement Services	\$2,306,206.05

LEA : 129546003 Pine Grove Area SD

Printed 1/24/2018 12:48:44 PM

General Fund (10)

4500 Building Acquisition and Construction Services – Original and Additional	<u>Elementary</u>	<u>Secondary</u>	<u>Federal</u>	<u>Total</u>
700 <u>Property</u>				
720 Buildings				2,306,206.05
Total Property				\$2,306,206.05
Total 4500 Building Acquisition and Construction Services – Original and Additional				\$2,306,206.05

LEA : 129546003 Pine Grove Area SD

Printed 1/24/2018 12:48:45 PM

General Fund (10)	
5000 Other Expenditures and Financing Uses	<u>Total</u>
800 <u>Other Objects</u>	
830 Interest	329,607.50
880 Refunds of Prior Years' Receipts	3,807.00
Total Other Objects	\$333,414.50
900 <u>Other Uses of Funds</u>	
910 Redemption of Principal	1,685,000.00
Total Other Uses of Funds	\$1,685,000.00
Total 5000 Other Expenditures and Financing Uses	\$2,018,414.50

LEA : 129546003 Pine Grove Area SD

Printed 1/24/2018 12:48:45 PM

General Fund (10)

5100 Debt Service / Other Expenditures and Financing Uses	<u>Elementary</u>	<u>Secondary</u>	<u>Federal</u>	<u>Total</u>
800 <u>Other Objects</u>				
830 Interest				329,607.50
880 Refunds of Prior Years' Receipts				3,807.00
Total Other Objects				\$333,414.50
900 <u>Other Uses of Funds</u>				
910 Redemption of Principal				1,685,000.00
Total Other Uses of Funds				\$1,685,000.00
Total 5100 Debt Service / Other Expenditures and Financing Uses				\$2,018,414.50

LEA : 129546003 Pine Grove Area SD

Printed 1/24/2018 12:48:45 PM

General Fund (10)

5110 Debt Service	<u>Elementary</u>	<u>Secondary</u>	<u>Federal</u>	<u>Total</u>
800 <u>Other Objects</u>				
830 Interest				329,607.50
Total Other Objects				\$329,607.50
900 <u>Other Uses of Funds</u>				
910 Redemption of Principal				1,685,000.00
Total Other Uses of Funds				\$1,685,000.00
Total 5110 Debt Service				\$2,014,607.50

LEA : 129546003 Pine Grove Area SD

Printed 1/24/2018 12:48:45 PM

General Fund (10)

5130 Refund of Prior Year Revenues / Receipts	<u>Elementary</u>	<u>Secondary</u>	<u>Federal</u>	<u>Total</u>
800 <u>Other Objects</u>				
880 Refunds of Prior Years' Receipts				3,807.00
Total Other Objects				\$3,807.00
Total 5130 Refund of Prior Year Revenues / Receipts				\$3,807.00

LEA : 129546003 Pine Grove Area SD

Printed 1/24/2018 12:48:45 PM

Other Capital Projects Fund (39)

4000 Facilities Acquisition, Construction and Improvement Services

Total

300 Purchased Professional and Technical Services

330 Other Professional Services	280,333.67
---------------------------------	------------

Total Purchased Professional and Technical Services	\$280,333.67
--	---------------------

400 Purchased Property Services

450 Construction Services	268,871.95
---------------------------	------------

Total Purchased Property Services	\$268,871.95
--	---------------------

600 Supplies

610 General Supplies	13,164.64
----------------------	-----------

Total Supplies	\$13,164.64
-----------------------	--------------------

700 Property

752 Capital Equipment – Original and Additional	2,390.50
---	----------

762 Capitalized Equipment - Replacement	123,055.24
---	------------

Total Property	\$125,445.74
-----------------------	---------------------

Total 4000 Facilities Acquisition, Construction and Improvement Services	\$687,816.00
---	---------------------

LEA : 129546003 Pine Grove Area SD

Printed 1/24/2018 12:48:45 PM

Other Capital Projects Fund (39)				
4100 Site Acquisition Services – Original and Additional	<u>Elementary</u>	<u>Secondary</u>	<u>Federal</u>	<u>Total</u>
300 <u>Purchased Professional and Technical Services</u>				
330 Other Professional Services				280,333.67
Total Purchased Professional and Technical Services				\$280,333.67
400 <u>Purchased Property Services</u>				
450 Construction Services				268,871.95
Total Purchased Property Services				\$268,871.95
600 <u>Supplies</u>				
610 General Supplies				13,164.64
Total Supplies				\$13,164.64
700 <u>Property</u>				
752 Capital Equipment – Original and Additional				2,390.50
762 Capitalized Equipment - Replacement				123,055.24
Total Property				\$125,445.74
Total 4100 Site Acquisition Services – Original and Additional				\$687,816.00

LEA : 129546003 Pine Grove Area SD

Printed 1/24/2018 12:48:47 PM

	<u>General Fund(10)</u>	<u>Public Purpose Trust(27)</u>	<u>Other Compt Approved (28)</u>	<u>Athletic / Activity(29)</u>	<u>Capital Reserve (690. 1850)(31)</u>
1000 <u>Instruction</u>					
1100 Regular Programs - Elementary / Secondary	9,778,416.50				
1200 Special Programs - Elementary / Secondary	2,294,078.91				
1300 Vocational Education	547,572.00				
1400 Other Instructional Programs - Elementary / Secondary	155,532.59				
Total Instruction	\$12,775,600.00				
2000 <u>Support Services</u>					
2100 Support Services - Students	743,261.46				
2200 Support Services - Instructional Staff	794,591.34				
2300 Support Services - Administration	1,324,516.84				
2400 Support Services - Pupil Health	225,399.44				
2500 Support Services - Business	357,822.47				
2600 Operation and Maintenance of Plant Services	1,922,170.12				
2700 Student Transportation Services	1,212,429.02				
2800 Support Services - Central	106,726.19				
2900 Other Support Services	599,807.12				
Total Support Services	\$7,286,724.00				
3000 <u>Operation of Non-Instructional Services</u>					
3200 Student Activities	512,555.64				
Total Operation of Non-Instructional Services	\$512,555.64				
4000 <u>Facilities Acquisition, Construction and Improvement Services</u>					
4100 Site Acquisition Services - Original and Additional					
4500 Building Acquisition and Construction Services - Original and Additional	2,306,206.05				
Total Facilities Acquisition, Construction and Improvement Services	\$2,306,206.05				
5000 <u>Other Expenditures and Financing Uses</u>					
5100 Debt Service / Other Expenditures and Financing Uses	2,018,414.50				
Total Other Expenditures and Financing Uses	\$2,018,414.50				
TOTAL ACTUAL EXPENDITURES & OTHER FINANCING USES	\$24,899,500.19				

LEA : 129546003 Pine Grove Area SD

Printed 1/24/2018 12:48:47 PM

	<u>Capital Reserve (1431)(32)</u>	<u>Other Capital Projects Fund(39)</u>	<u>Debt Service(40)</u>	<u>Permanent(90)</u>	<u>Total</u>
1000 Instruction					
1100 Regular Programs - Elementary / Secondary					9,778,416.50
1200 Special Programs - Elementary / Secondary					2,294,078.91
1300 Vocational Education					547,572.00
1400 Other Instructional Programs - Elementary / Secondary					155,532.59
Total Instruction					\$12,775,600.00
2000 Support Services					
2100 Support Services - Students					743,261.46
2200 Support Services - Instructional Staff					794,591.34
2300 Support Services - Administration					1,324,516.84
2400 Support Services - Pupil Health					225,399.44
2500 Support Services - Business					357,822.47
2600 Operation and Maintenance of Plant Services					1,922,170.12
2700 Student Transportation Services					1,212,429.02
2800 Support Services - Central					106,726.19
2900 Other Support Services					599,807.12
Total Support Services					\$7,286,724.00
3000 Operation of Non-Instructional Services					
3200 Student Activities					512,555.64
Total Operation of Non-Instructional Services					\$512,555.64
4000 Facilities Acquisition, Construction and Improvement Services					
4100 Site Acquisition Services - Original and Additional		687,816.00			687,816.00
4500 Building Acquisition and Construction Services - Original and Additional					2,306,206.05
Total Facilities Acquisition, Construction and Improvement Services		\$687,816.00			\$2,994,022.05
5000 Other Expenditures and Financing Uses					
5100 Debt Service / Other Expenditures and Financing Uses					2,018,414.50
Total Other Expenditures and Financing Uses					\$2,018,414.50
TOTAL ACTUAL EXPENDITURES & OTHER FINANCING USES		\$687,816.00			\$25,587,316.19

LEA : 129546003 Pine Grove Area SD

Printed 1/24/2018 12:48:55 PM

PSERS Salary Data (Salary Data should relate to the General Fund only)

Amount	Description	Amount
	Total Salary Base for salaries subject to PSERS withholding	9,594,605.65
	Total Federally Funded salaries subject to PSERS withholding	364,280.78

Title I Expenditure Data

Amount	Description	Amount
	Expenditures Funded with Current Title I Funds	337,920.00
	Expenditures Funded with Carry over Title I Funds	
Total	Title I Expenditure Data	\$337,920.00

Title I ARRA Amount

Amount	Description	Amount
	Portion of Total Title I Expenditures funded with ARRA Title I	

Benefits for Staff Relative to Collective Bargaining Agreements

	OBJECT	COVERED	NOT COVERED	TOTAL
10 General Fund	No Self Insurance data to report			
	211 Medical Insurance	2,349,248.63	123,644.66	2,472,893.29
	212 Dental Insurance	105,414.80	4,392.28	109,807.08
	215 Eye Care Insurance	45,268.75	923.85	46,192.60
	216 Prescription Insurance			
	271 Self-Insurance Medical Benefits			
	272 Self-Insurance Dental Benefits			
	275 Self-Insurance Eye Care Benefits			
	276 Self-Insurance Prescription Benefits			
	FUND TOTAL	\$2,499,932.18	\$128,960.79	\$2,628,892.97
50 Enterprise Fund	No Self Insurance data to report			
	211 Medical Insurance			
	212 Dental Insurance			
	215 Eye Care Insurance			
	216 Prescription Insurance			
	271 Self-Insurance Medical Benefits			
	272 Self-Insurance Dental Benefits			
	275 Self-Insurance Eye Care Benefits			
	276 Self-Insurance Prescription Benefits			
	FUND TOTAL			
60 Internal Service Fund	No Self Insurance data to report			
	211 Medical Insurance			
	212 Dental Insurance			
	215 Eye Care Insurance			
	216 Prescription Insurance			
	271 Self-Insurance Medical Benefits			
	272 Self-Insurance Dental Benefits			
	275 Self-Insurance Eye Care Benefits			
	276 Self-Insurance Prescription Benefits			
	FUND TOTAL			
Total of All Funds		\$2,499,932.18	\$128,960.79	\$2,628,892.97

LEA : 129546003 Pine Grove Area SD

Printed 1/24/2018 12:48:57 PM

Function	Special Education (Prior Year)	Nonspecial Education (Prior Year)	Total (Prior Year)	Special Education (Current Year)	Nonspecial Education (Current Year)	Total (Current Year)
2120 Guidance Services	54,364.00	332,144.49	386,508.49	51,983.00	347,890.00	399,873.00
2140 Psychological Services	219,457.82		219,457.82	232,428.96		232,428.96
2150 Speech Pathology and Audiology Services						
2160 Social Work Services	49,010.00		49,010.00	110,549.00		110,549.00
2260 Instruction and Curriculum Development Services	188,343.00	18,351.24	206,694.24	305,897.67	16,100.00	321,997.67
2350 Legal and Accounting Services		86,244.00	86,244.00		25,517.52	25,517.52
2420 Medical Services	18,602.00	2,021.00	20,623.00	1,490.00		1,490.00
2440 Nursing Services		199,915.00	199,915.00		223,202.00	223,202.00
2700 Student Transportation Services	20,044.00	1,094,250.00	1,114,294.00	36,364.00	1,175,765.00	1,212,129.00
Total	\$549,820.82	\$1,732,925.73	\$2,282,746.55	\$738,712.63	\$1,788,474.52	\$2,527,187.15

LEA : 129546003 Pine Grove Area SD

Printed 1/24/2018 12:48:58 PM

(PRINCIPAL AMOUNTS ONLY)

GOVERNMENTAL FUNDS/ ACTIVITIES

	Short-Term Borrowing	General Obligation Bonds/Notes	Authority Building Obligations	Other Long-Term Debt	Other Post- Employment Benefits (OPEB)	Compensated Absences	Net Pension Liability	Total
1. Debt at Beginning of Fiscal Year		14,205,000.00			1,186,607.00	323,937.00	32,097,000.00	47,812,544.00
2. Additional Debt Incurred During Year					118,878.00		3,881,000.00	3,999,878.00
3. Retirements and Repayments		1,685,000.00				4,891.00		1,689,891.00
4. Debt at End of Fiscal Year		12,520,000.00			1,305,485.00	319,046.00	35,978,000.00	50,122,531.00
5. Accreted Interest at End Of Fiscal Year								
6. Total Debt and Accreted Interest		12,520,000.00			1,305,485.00	319,046.00	35,978,000.00	50,122,531.00
7. Current Portion P&I - Due within 1 year		1,720,000.00						1,720,000.00
8. Interest Paid during current fiscal year		329,607.50						329,607.50

(PRINCIPAL AMOUNTS ONLY)

PROPRIETARY FUNDS

1. Debt at Beginning of Fiscal Year
2. Additional Debt Incurred During Year
3. Retirements and Repayments
4. Debt at End of Fiscal Year
5. Accreted Interest at End Of Fiscal Year
6. Total Debt and Accreted Interest
7. Current Portion P&I - Due within 1 year
8. Interest Paid during current fiscal year

LEA : 129546003 Pine Grove Area SD

Printed 1/24/2018 12:48:58 PM

Total Principal and Interest Payments Made by Your School - All Funds

Function	Fund		Principal (910)	Principal (920)	Interest (830)	Total (Principal +Interest)	Misc Other Uses (990)
5110	10	General Fund	1,685,000.00		329,607.50	2,014,607.50	
5110	20	Special Revenue Funds					
5110	30	Capital Projects Funds					
5110	40	Debt Service Fund					
5110	90	Permanent Fund					
5120	10	General Fund					
5120	20	Special Revenue Funds					
5120	30	Capital Projects Funds					
5120	40	Debt Service Fund					
Total Debt Payments - Governmental Funds			\$1,685,000.00		\$329,607.50	\$2,014,607.50	

Function	Fund		Principal (910)	Principal (920)	Interest (830)	Total (Principal +Interest)
5110	50	Enterprise Fund				
5110	60	Internal Service Fund				
5120	50	Enterprise Fund				
5120	60	Internal Service Fund				
Total Debt Payments - Proprietary Funds						

LEA : 129546003 Pine Grove Area SD

Printed 1/24/2018 12:48:58 PM

Debt Details
Governmental Funds/ Activities

Debt Category	Debt Issue Date (MM/YYYY)	Principal Amounts Only				Current Portion Due Within One Year (Principal and Interest)	Interest Paid During Fiscal Year
		Debt at Beginning of Fiscal Year	Additions	Reductions / Repayments	Debt at End of Fiscal Year		
General Obligation Bonds/Notes – CIB	05/2015	5,520,000.00		1,315,000.00	4,205,000.00	865,000.00	95,347.50
General Obligation Bonds/Notes – CIB	05/2012	8,685,000.00		370,000.00	8,315,000.00	855,000.00	234,260.00
Compensated Absences		323,937.00		4,891.00	319,046.00		
Other Post-Employment Benefits (OPEB)		1,186,607.00	118,878.00		1,305,485.00		
Net Pension Liability		32,097,000.00	3,881,000.00		35,978,000.00		
Totals for Debt Entered:		\$47,812,544.00	\$3,999,878.00	\$1,689,891.00	\$50,122,531.00	\$1,720,000.00	\$329,607.50

LEA : 129546003 Pine Grove Area SD

Printed 1/24/2018 12:48:58 PM

General Fund (10)

Section 1: Tuition/Purchased Services as Reported within Expenditure Detail	Amount
Tuition Reported in General Fund Expenditures 1000-560	908,254.14
Purchased Services in General Fund Expenditures 1000-594 and 1000-597	
Section 1 Total	\$908,254.14

Section 2: Tuition Paid to Institution Types During Fiscal Year	Tuition Paid For Nonspecial Education	Tuition Paid For Special Education	Total
1 1306 Institutions		12,348.00	12,348.00
2 Institutionalized Children's Programs			
3 Juveniles Incarcerated in Adult Facilities			
4 Residential Treatment Facilities			
5 Other Local Education Agencies	71,167.52		71,167.52
6 Brick and Mortar Charter Schools			
7 Cyber Charter Schools	270,267.62		270,267.62
8 Career and Technology Centers	554,471.00		554,471.00
9 Approved Private Schools			
10 PA Chartered Schools for the Deaf and Blind			
11 Private Residential Rehabilitative Institutions			
12 Juvenile Detention Centers			
13 Special Program Jointures			
14 Other Tuition Not Included Elsewhere In This Section			
Section 2 Total	\$895,906.14	\$12,348.00	\$908,254.14

LEA : 129546003 Pine Grove Area SD

Printed 1/24/2018 12:48:59 PM

Food Service / Cafeteria Operations Fund (51)

3000 Operation of Non-Instructional Services		<u>Total</u>
500 <u>Other Purchased Services</u>		
570 Food Service Management		730,343.00
Total Other Purchased Services		\$730,343.00
600 <u>Supplies</u>		
610 General Supplies		5,179.23
630 Food		42,882.77
Total Supplies		\$48,062.00
700 <u>Property</u>		
740 Depreciation		1,198.00
Total Property		\$1,198.00
800 <u>Other Objects</u>		
810 Dues and Fees		246.00
Total Other Objects		\$246.00
Total 3000 Operation of Non-Instructional Services		\$779,849.00

LEA : 129546003 Pine Grove Area SD

Printed 1/24/2018 12:48:59 PM

Food Service / Cafeteria Operations Fund (51)

3100 Food Services	<u>Elementary</u>	<u>Secondary</u>	<u>Federal</u>	<u>Total</u>
500 <u>Other Purchased Services</u>				
570 Food Service Management				730,343.00
Total Other Purchased Services				\$730,343.00
600 <u>Supplies</u>				
610 General Supplies				5,179.23
630 Food				42,882.77
Total Supplies				\$48,062.00
700 <u>Property</u>				
740 Depreciation				1,198.00
Total Property				\$1,198.00
800 <u>Other Objects</u>				
810 Dues and Fees				246.00
Total Other Objects				\$246.00
Total 3100 Food Services				\$779,849.00

	<u>Food Service(51)</u>	<u>Child Care Operations(52)</u>	<u>Other Enterprise(58)</u>	<u>Internal Service(60)</u>	<u>Total</u>
3000 <u>Operation of Non-Instructional Services</u>					
3100 Food Services	779,849.00				779,849.00
Total Operation of Non-Instructional Services	\$779,849.00				\$779,849.00
TOTAL ACTUAL EXPENDITURES & OTHER FINANCING USES	\$779,849.00				\$779,849.00