

LEA Name : Pine Grove Area SD  
Address : 103 School St  
Pine Grove, PA 17963

County : Schuylkill  
AUN Number : 129546003  
LEA Type : SD

## Annual Financial Report Accuracy Certification Statement

For Fiscal Year Ending  
6/30/2018

Pennsylvania Department of Education  
&  
Office of Comptroller Operations

PDE-2056: Intermediate Unit  
PDE-2057: School District, AVTS/CTC, Charter School,  
and Special Program Jointure

**CERTIFICATION:** By signing this page I agree that the electronic data submitted is a complete and accurate statement of the financial operations and status of the local education agency for the fiscal year. It has been prepared in accordance with generally accepted accounting principles and established Commonwealth of PA reporting guidelines.

  
Chief School Administrator Signature

Date 11/30/18

  
Board Secretary Signature

Date 11/30/18

Jodie I Dermo

(570)345-2731 Ext :350

Contact Person

Contact Person Telephone Number

jdermo@pgasd.com

(570) 345-2790

Contact Person E-mail Address

Contact Person Fax Number

**Audit Certification**  
**Annual Financial Report:**

For Fiscal Year Ending 6/30/2018

(Pursuant to PA School Code Section 218(b))

LEA Name : Pine Grove Area SD  
AUN Number : 129546003  
County : Schuylkill

**Audit Certification Due:**  
12/31/2018

This certification is applicable to the Annual Financial Report data submitted  
through the Consolidated Financial Reporting System on: 11/30/18

Date

**Auditing Firm:**

Jones & Company, P.C.  
110 N 2nd St

Pottsville , PA, 17901-

**Auditor Contact Name:** Ed Ebling

**Auditor Phone:** (570)622-5010

**Auditor E-mail:** jonescpa@comcast.net

**CERTIFICATION:** By signing this page I agree that the financial statements of the school have been properly audited as noted above pursuant to Article XXIV, and in the auditor's professional opinion, the Annual Financial Report (PDE-2057) submitted on the date referenced is materially consistent with the audited financial statements.

**Chief School Administrator**

Signature

11/30/18

Date

**Board Secretary**

Signature

11/30/18

Date

Jodie I Dermo

**Contact Person**

(570)345-2731

Ext :350

**Contact Person Telephone Number**

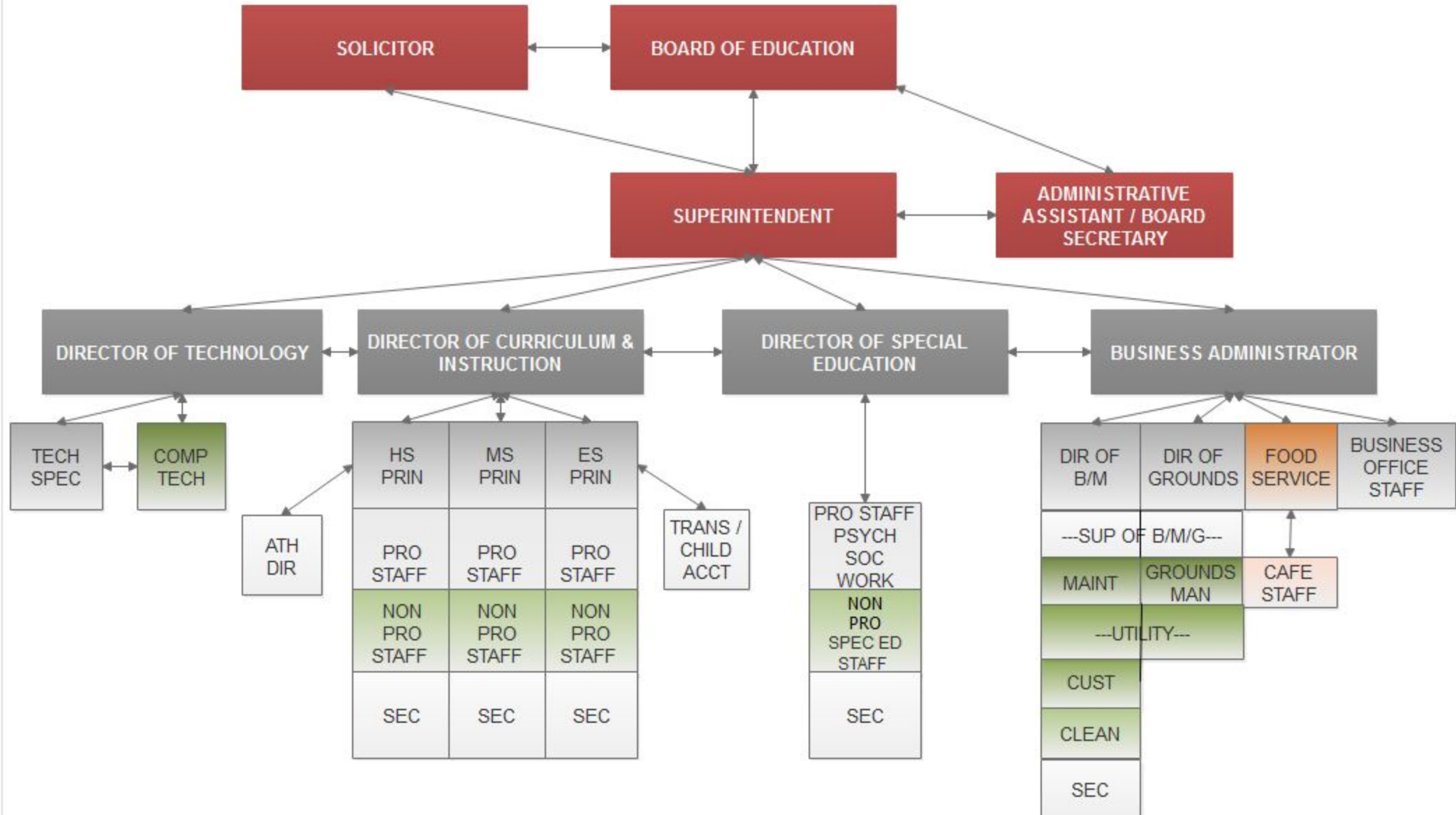
(570) 345-2790

**Contact Person E-mail Address**

jdermo@pgasd.com

**Contact Person Fax Number**

# PINE GROVE AREA SCHOOL DISTRICT ORGANIZATIONAL CHART



LEA : 129546003 Pine Grove Area SD

Printed 12/3/2018 4:21:16 PM

Amounts Expressed in Whole Dollars		<u>General Fund</u> <u>(10)</u>	<u>Public Purpose Trust</u> <u>(27)</u>	<u>Other Compt Approved</u> <u>(28)</u>	<u>Athletic / Activity</u> <u>(29)</u>	<u>Capital Reserve (690.</u> <u>1850)</u> <u>(31)</u>
<b>Assets And Deferred Outflows Of Resources</b>						
<b>Assets</b>						
0100	Cash and Cash Equivalents	7,283,285				
0110	Investments					
0120	Taxes Receivable	220,816				
0130	Due From Other Funds	125,187				
0141	Due From Other Governments					
0142	State Revenue Receivable	1,032,838				
0143	Federal Revenue Receivable	843,413				
0145	Other Intergovernmental Revenue Receivable	473,325				
0146	Due from Primary Government					
0147	Due from Component Unit					
0150	Other Receivables	77,307				
0170	Inventories	30,643				
0180	Prepaid Expenses (Expenditures)	116,404				
0190	Other Current Assets					
<b>Total Assets</b>		<b>\$10,203,218</b>				
0910	Deferred Outflows of Resources					
<b>Total Assets And Deferred Outflows Of Resources</b>		<b>\$10,203,218</b>				

LEA : 129546003     Pine Grove Area SD

Printed 12/3/2018 4:21:16 PM

Amounts Expressed in Whole Dollars		<u>Capital Reserve (1431)</u> <u>(32)</u>	<u>Other Capital Projects</u> <u>Fund</u> <u>(39)</u>	<u>Debt Service</u> <u>(40)</u>	<u>Permanent</u> <u>(90)</u>	<u>Total Governmental</u> <u>Funds</u>
<b>Assets And Deferred Outflows Of Resources</b>						
<b>Assets</b>						
0100	Cash and Cash Equivalents		749,394			8,032,679
0110	Investments					
0120	Taxes Receivable					220,816
0130	Due From Other Funds		7,761			132,948
0141	Due From Other Governments					
0142	State Revenue Receivable					1,032,838
0143	Federal Revenue Receivable					843,413
0145	Other Intergovernmental Revenue Receivable					473,325
0146	Due from Primary Government					
0147	Due from Component Unit					
0150	Other Receivables					77,307
0170	Inventories					30,643
0180	Prepaid Expenses (Expenditures)					116,404
0190	Other Current Assets					
<b>Total Assets</b>			<b>\$757,155</b>			<b>\$10,960,373</b>
0910	Deferred Outflows of Resources					
<b>Total Assets And Deferred Outflows Of Resources</b>			<b>\$757,155</b>			<b>\$10,960,373</b>

LEA : 129546003 Pine Grove Area SD

Printed 12/3/2018 4:21:16 PM

Amounts Expressed in Whole Dollars		<u>General Fund</u> <u>(10)</u>	<u>Public Purpose Trust</u> <u>(27)</u>	<u>Other Compt Approved</u> <u>(28)</u>	<u>Athletic / Activity</u> <u>(29)</u>	<u>Capital Reserve (690.</u> <u>1850)</u> <u>(31)</u>
<b>Liabilities And Deferred Inflows Of Resources And Fund Balances</b>						
<b>Liabilities</b>						
0400	Due to Other Funds	370,139				
0411	Due to Other Governments					
0412	Due to Primary Government					
0413	Due to Component Unit					
0420	Accounts Payable	385,522				
0430	Contracts Payable					
0440	Current Portion of Long-Term Debt					
0450	Short-Term Payables					
0461	Accrued Salaries and Benefits	2,335,607				
0462	Payroll Deductions and Withholding					
0480	Unearned Revenues					
0490	Other Current Liabilities					
<b>Total Liabilities</b>		<b>\$3,091,268</b>				
0950	Deferred Inflows of Resources	600,926				
<b>Fund Balances</b>						
0810	Nonspendable Fund Balance					
0820	Restricted Fund Balance					
0830	Committed Fund Balance	4,022,000				
0840	Assigned Fund Balance	1,670,827				
0850	Unassigned Fund Balance	818,197				
<b>Total Fund Balances</b>		<b>\$6,511,024</b>				
<b>Total Liabilities, Deferred Inflows Of Resources And Fund Balances</b>		<b>\$10,203,218</b>				

LEA : 129546003     Pine Grove Area SD

Printed 12/3/2018 4:21:16 PM

Amounts Expressed in Whole Dollars		<u>Capital Reserve (1431)</u> <u>(32)</u>	<u>Other Capital Projects</u> <u>Fund</u> <u>(39)</u>	<u>Debt Service</u> <u>(40)</u>	<u>Permanent</u> <u>(90)</u>	<u>Total Governmental</u> <u>Funds</u>
<b>Liabilities And Deferred Inflows Of Resources And Fund Balances</b>						
<b>Liabilities</b>						
0400	Due to Other Funds		1,200			371,339
0411	Due to Other Governments					
0412	Due to Primary Government					
0413	Due to Component Unit					
0420	Accounts Payable					385,522
0430	Contracts Payable					
0440	Current Portion of Long-Term Debt					
0450	Short-Term Payables					
0461	Accrued Salaries and Benefits					2,335,607
0462	Payroll Deductions and Withholding					
0480	Unearned Revenues					
0490	Other Current Liabilities					
<b>Total Liabilities</b>			<b>\$1,200</b>			<b>\$3,092,468</b>
0950	Deferred Inflows of Resources					600,926
<b>Fund Balances</b>						
0810	Nonspendable Fund Balance					
0820	Restricted Fund Balance		755,955			755,955
0830	Committed Fund Balance					4,022,000
0840	Assigned Fund Balance					1,670,827
0850	Unassigned Fund Balance					818,197
<b>Total Fund Balances</b>			<b>\$755,955</b>			<b>\$7,266,979</b>
<b>Total Liabilities, Deferred Inflows Of Resources And Fund Balances</b>			<b>\$757,155</b>			<b>\$10,960,373</b>

Amounts Expressed in Whole Dollars	<u>General Fund</u> <u>(10)</u>	<u>Public Purpose Trust</u> <u>(27)</u>	<u>Other Compt Approved</u> <u>(28)</u>	<u>Athletic / Activity</u> <u>(29)</u>	<u>Capital Reserve (690.</u> <u>1850)</u> <u>(31)</u>
<b>Revenues</b>					
6000 Revenue from Local Sources	11,637,334				
7000 Revenue from State Sources	11,955,707				
8000 Revenue from Federal Sources	519,082				
<b>Total Revenues</b>	<b>\$24,112,123</b>				
<b>Expenditures</b>					
1000 Instruction	13,700,892				
2000 Support Services	7,018,730				
3000 Operation of Non-Instructional Services	480,116				
4000 Facilities Acquisition, Construction and Improvement Services	1,093,488				
5110 Debt Service	2,029,538				
5130 Refund of Prior Year Revenues / Receipts	17,322				
<b>Total Expenditures</b>	<b>\$24,340,086</b>				
<b>Excess (Deficiency) Of Revenues Over Expenditures</b>	<b>(\$227,963)</b>				
<b>Other Financing Sources (Uses)</b>					
9110 Face Value of Bonds Issued					
9120 Proceeds from Refunding of Bonds					
9130 Bond Premiums					
9200 Proceeds from Extended-Term Financing					
9300 Interfund Transfers - IN					
9400 Sale of or Compensation for Loss of Fixed Assets					
9710 Transfers from Component Units					
9720 Transfers from Primary Governments					
9910 Other Financing Sources Not Listed in the 9000 Series					
9990 Insurance Recoveries					
5120 Debt Service – Refunded Bonds					
5150 Bond Discounts					
5200 Interfund Transfers – Out					
5300 Transfers Out to Component Units/Primary Governments					
<b>Total Other Financing Sources (Uses)</b>					



LEA : 129546003 Pine Grove Area SD

Printed 12/3/2018 4:21:20 PM

Amounts Expressed in Whole Dollars		<u>Capital Reserve (1431)</u> <u>(32)</u>	<u>Other Capital Projects</u> <u>Fund</u> <u>(39)</u>	<u>Debt Service</u> <u>(40)</u>	<u>Permanent</u> <u>(90)</u>	<u>Total Governmental</u> <u>Funds</u>
<b>Revenues</b>						
6000	Revenue from Local Sources		16,015			11,653,349
7000	Revenue from State Sources					11,955,707
8000	Revenue from Federal Sources					519,082
<b>Total Revenues</b>			<b>\$16,015</b>			<b>\$24,128,138</b>
<b>Expenditures</b>						
1000	Instruction					13,700,892
2000	Support Services					7,018,730
3000	Operation of Non-Instructional Services					480,116
4000	Facilities Acquisition, Construction and Improvement Services		67,850			1,161,338
5110	Debt Service					2,029,538
5130	Refund of Prior Year Revenues / Receipts					17,322
<b>Total Expenditures</b>			<b>\$67,850</b>			<b>\$24,407,936</b>
<b>Excess (Deficiency) Of Revenues Over Expenditures</b>			<b>(\$51,835)</b>			<b>(\$279,798)</b>
<b>Other Financing Sources (Uses)</b>						
9110	Face Value of Bonds Issued					
9120	Proceeds from Refunding of Bonds					
9130	Bond Premiums					
9200	Proceeds from Extended-Term Financing					
9300	Interfund Transfers - IN					
9400	Sale of or Compensation for Loss of Fixed Assets					
9710	Transfers from Component Units					
9720	Transfers from Primary Governments					
9910	Other Financing Sources Not Listed in the 9000 Series					
9990	Insurance Recoveries					
5120	Debt Service – Refunded Bonds					
5150	Bond Discounts					
5200	Interfund Transfers – Out					
5300	Transfers Out to Component Units/Primary Governments					
<b>Total Other Financing Sources (Uses)</b>						

Amounts Expressed in Whole Dollars		<u>General Fund</u> <u>(10)</u>	<u>Public Purpose Trust</u> <u>(27)</u>	<u>Other Compt Approved</u> <u>(28)</u>	<u>Athletic / Activity</u> <u>(29)</u>	<u>Capital Reserve</u> <u>(690.</u> <u>1850)</u> <u>(31)</u>
<b>Special And Extraordinary Items</b>						
9920	Special Items – Gains					
9930	Extraordinary Items – Gains					
5520	Special Items – Losses					
5530	Extraordinary Items – Losses					
<b>Net Change In Fund Balances</b>		<b>(\$227,963)</b>				
<b>Fund Balance</b>						
0001	Fund Balance - Beginning of Fiscal Year	6,738,987				
<b>Fund Balance - End Of Year</b>		<b>\$6,511,024</b>				

Amounts Expressed in Whole Dollars		<u>Capital Reserve (1431)</u> <u>(32)</u>	<u>Other Capital Projects</u> <u>Fund</u> <u>(39)</u>	<u>Debt Service</u> <u>(40)</u>	<u>Permanent</u> <u>(90)</u>	<u>Total Governmental</u> <u>Funds</u>
<b>Special And Extraordinary Items</b>						
9920	Special Items – Gains					
9930	Extraordinary Items – Gains					
5520	Special Items – Losses					
5530	Extraordinary Items – Losses					
<b>Net Change In Fund Balances</b>			<b>(\$51,835)</b>			<b>(\$279,798)</b>
<b>Fund Balance</b>						
0001	Fund Balance - Beginning of Fiscal Year		807,790			7,546,777
<b>Fund Balance - End Of Year</b>			<b>\$755,955</b>			<b>\$7,266,979</b>

LEA : 129546003     Pine Grove Area SD

Printed 12/3/2018 4:21:21 PM

Amounts Expressed in Whole Dollars	<u>Food Service</u> <u>(51)</u>	<u>Child Care</u> <u>Operations</u> <u>(52)</u>	<u>Other Enterprise</u> <u>(58)</u>	<u>TOTAL</u>	<u>Internal Service</u> <u>(60)</u>
<b>Assets And Deferred Outflows Of Resources</b>					
<b>Current Assets</b>					
0100 Cash and Cash Equivalents	235,211			235,211	
0110 Investments					
0130 Due From Other Funds	380,200			380,200	
0141 Due From Other Governments					
0142 State Revenue Receivable	339			339	
0143 Federal Revenue Receivable	5,243			5,243	
0146 Due from Primary Government					
0147 Due from Component Unit					
0150 Other Receivables					
0170 Inventories	16,185			16,185	
0180 Prepaid Expenses (Expenditures)					
0190 Other Current Assets					
<b>Total Current Assets</b>	<b>\$637,178</b>			<b>\$637,178</b>	
<b>Noncurrent Assets</b>					
0211 Land					
0212 Site Improvements (Net)					
0220 Buildings and Building Improvements (Net)					
0230 Machinery, Equipment and Furniture (Net)	17,689			17,689	
0250 Construction in Progress					
0260 Long Term Prepayments					
0290 Other Noncurrent Assets					
<b>Total Noncurrent Assets</b>	<b>\$17,689</b>			<b>\$17,689</b>	
0910 Deferred Outflows of Resources					
<b>Total Assets And Deferred Outflows Of Resources</b>	<b>\$654,867</b>			<b>\$654,867</b>	

LEA : 129546003     Pine Grove Area SD

Printed 12/3/2018 4:21:21 PM

Amounts Expressed in Whole Dollars	<u>Food Service</u> <u>(51)</u>	<u>Child Care</u> <u>Operations</u> <u>(52)</u>	<u>Other Enterprise</u> <u>(58)</u>	<u>TOTAL</u>	<u>Internal Service</u> <u>(60)</u>
<b>Liabilities And Deferred Inflows Of Resources And Net Position</b>					
<b>Current Liabilities</b>					
0400 Due to Other Funds	135,342			135,342	
0411 Due to Other Governments					
0413 Due to Component Unit					
0420 Accounts Payable	12,646			12,646	
0430 Contracts Payable					
0440 Current Portion of Long-Term Debt					
0450 Short-Term Payables					
0461 Accrued Salaries and Benefits					
0462 Payroll Deductions and Withholding					
0480 Unearned Revenues	23,464			23,464	
0490 Other Current Liabilities					
<b>Total Current Liabilities</b>	<b>\$171,452</b>			<b>\$171,452</b>	
<b>Noncurrent Liabilities</b>					
0510 Bonds Payable					
0520 Extended-Term Financing Agreements Payable					
0530 Lease-Purchase Obligations					
0540 Accumulated Compensated Absences					
0550 Authority Lease Obligations					
0560 Other Post-Employment Benefits (OPEB)					
0570 Net Pension Liability					
0599 Other Noncurrent Liabilities					
<b>Total Noncurrent Liabilities</b>					
<b>Total Liabilities</b>	<b>\$171,452</b>			<b>\$171,452</b>	
0950 Deferred Inflows of Resources					
<b>Net Position</b>					
0791 Net Investment in Capital Assets	17,689			17,689	
0008 Restricted Net Position (0792 – 0798)					
0799 Unrestricted Net Position	465,726			465,726	
<b>Total Net Position</b>	<b>\$483,415</b>			<b>\$483,415</b>	
<b>Total Liabilities And Deferred Inflows Of Resources And Net Position</b>	<b>\$654,867</b>			<b>\$654,867</b>	

Amounts Expressed in Whole Dollars	<u>Food Service</u> <u>(51)</u>	<u>Child Care Operations</u> <u>(52)</u>	<u>Other Enterprise</u> <u>(58)</u>	<u>TOTAL</u>	<u>Internal Service</u> <u>(60)</u>
<b>Operating Revenues</b>					
6600 Food Service Revenue	455,301			455,301	
0071 Charges for Services					
0072 Other Operating Revenue					
<b>Total Operating Revenues</b>	<b>\$455,301</b>			<b>\$455,301</b>	
<b>Operating Expenses</b>					
100 Personnel Services – Salaries					
200 Personnel Services – Employee Benefits					
300 Purchased Professional and Technical Services					
400 Purchased Property Services	1,755			1,755	
500 Other Purchased Services	794,480			794,480	
600 Supplies	37,288			37,288	
740 Depreciation	3,470			3,470	
810 Dues and Fees	246			246	
890 Miscellaneous Expenditures					
<b>Total Operating Expenses</b>	<b>\$837,239</b>			<b>\$837,239</b>	
<b>Operating Income (Loss)</b>	<b>(\$381,938)</b>			<b>(\$381,938)</b>	
<b>Non Operating Revenues (Expenses)</b>					
6500 Earnings on Investments	3,387			3,387	
6920 Contributions and Donations from Private Sources					
6930 Gains or Losses on Sale of Fixed Assets					
6991 Refunds of a Prior Year Expenditure					
7000 Revenue from State Sources	25,843			25,843	
8000 Revenue from Federal Sources	407,691			407,691	
820 Claims and Judgments Against the LEA					
830 Interest					
<b>TOTAL Non Operating Revenues (Expenses)</b>	<b>\$436,921</b>			<b>\$436,921</b>	
<b>Income (Loss) Before Contributions And Transfers</b>	<b>\$54,983</b>			<b>\$54,983</b>	

Amounts Expressed in Whole Dollars	<u>Food Service</u> <u>(51)</u>	<u>Child Care Operations</u> <u>(52)</u>	<u>Other Enterprise</u> <u>(58)</u>	<u>TOTAL</u>	<u>Internal Service</u> <u>(60)</u>
<b>Contributions, Transfers, and Special and Extraordinary Items</b>					
5200 Interfund Transfers – Out					
5300 Transfers Out to Component Units/Primary Governments					
5520 Special Items – Losses					
5530 Extraordinary Items – Losses					
9300 Interfund Transfers - IN					
9500 Capital Contributions					
9700 Transfers IN From Component Units/Primary Governments					
9920 Special Items – Gains					
9930 Extraordinary Items – Gains					
<b>Change In Net Position</b>	<b>\$54,983</b>			<b>\$54,983</b>	
0002 Net Position - Beginning of Fiscal Year	428,432			428,432	
0003 Accounting Changes / Residual Equity Transfers					
<b>Net Position - End Of Year</b>	<b>\$483,415</b>			<b>\$483,415</b>	

LEA : 129546003     Pine Grove Area SD

Printed 12/3/2018 4:21:27 PM

Amounts Expressed in Whole Dollars	Food Service (51)	Child Care Operations (52)	Other Enterprise (58)	TOTAL	Internal Service(60)
<b>Cash Flows From Operating Activities</b>					
0011 Cash Receipts From Users	452,980			452,980	
0012 Cash Receipts From Assessments Made to Other Funds					
0013 Cash Receipts From Earnings on Investments					
0014 Cash Receipts From Other Operating Revenue					
0015 Cash Payments To Employees For Services					
0016 Cash Payments For Insurance Claims					
0017 Cash Payments To Suppliers For Goods and Services	897,792			897,792	
0018 Cash Payments For Other Operating Expenses	246			246	
<b>Net Cash Provided By (Used For) Operating Activities</b>	<b>(\$445,058)</b>			<b>(\$445,058)</b>	
<b>Cash Flows From Non-Capital Financing Activities</b>					
0021 Receipts From Local Sources - 6000					
0022 Receipts From State Sources - 7000	25,843			25,843	
0023 Receipts From Federal Sources -8000	407,691			407,691	
0024 Notes and Loans Received (Repaid)					
0025 Interest Paid on Notes/Loans - 5100-830					
0026 Operating Transfers In (Out)/Residual Equity Trans					
0027 Operating Transfers In (Out) Primary Government / Comp Unit					
0028 Receipts From Refund of Prior Year Expenditures - 6991					
0029 Special and Extraordinary Gains (losses)					
0030 Receipts from Insurance Recoveries -9990					
<b>Net Cash Prov By (Used for) Non-Capital Financing Activities</b>	<b>\$433,534</b>			<b>\$433,534</b>	
<b>Cash Flows From Capital and Related Financing Activities</b>					
0031 Payments For Fac Acq, Const, and Imp - 4000	(11,168)			(11,168)	
0032 Gain / (Loss) on Sale of Fixed Assets - 6930					
0033 Proceeds From Extended Term Financing - 9200					
0034 Principal Paid on Financing Agreements					
0035 Interest Paid on Financing Agreements - 5100-830					
0036 (Inc) Dec in Contributed Capital					
<b>Net Cash Prov By (Used for) Capital and Related Financing Activities</b>	<b>(\$11,168)</b>			<b>(\$11,168)</b>	
<b>Cash Flows From Investing Activities</b>					
0041 Earnings on Investments - 6500	3,387			3,387	
0042 Purchase of Inv Securities / Deposits to Inv Pools					
0043 Receipts From Investment Pool Withdrawals					
0044 Proceeds from Sale and Maturity of Inv Securities					



LEA : 129546003     Pine Grove Area SD

Printed 12/3/2018 4:21:27 PM

0045   Loans Received (Paid)

Net Cash Prov By (Used for) Investing Activities	\$3,387	\$3,387
--	---------	---------

LEA : 129546003     Pine Grove Area SD

Printed 12/3/2018 4:21:27 PM

	Food Service (51)	Child Care Operations (52)	Other Enterprise (58)	TOTAL	Internal Service (60)
Net Increase (Decrease) in Cash Flows	(19,305)			(19,305)	
0004 Cash and Cash Equivalents Beginning of Year	254,516			254,516	
Cash and Cash Equivalents at Year End	\$235,211			\$235,211	
Reconciliation of Operating Income (Loss) To Net Cash Provided by (Used For) Operating Activities					
0005 Operating Income (Loss) per REP	(381,938)			(381,938)	
Adjustments					
0051 Depreciation and Net Amortization	1,674			1,674	
0052 Provision for Uncollectible Accounts					
0053 Other Adjustments					
Effect of Changes in Assets, Liabilities, Deferred Outflows and Deferred Inflows					
0054 (Inc) Dec In Accounts Receivable (0120-0150)	(3,599)			(3,599)	
0055 Advances to Other Funds (0160)	(64,150)			(64,150)	
0056 (Inc) Dec in Inventories (0170)					
0057 (Inc) Dec in Prepaid Expenses (0180)					
0058 (Inc) Dec in Other Current or Noncurrent Assets					
0064 Deferred Outflows (0910)					
0059 Inc (Dec) in Accounts Payable (0400-0450)	(159)			(159)	
0060 Inc (Dec) in Accrued Salaries/Benefits (0461)					
0065 Inc (Dec) in Net Pension Liabilities (0570)					
0066 Inc (Dec) in Other Postemp Benefit Oblig (0560)					
0061 Inc (Dec) in Payroll Deductions/Withholding (0462)					
0062 Inc (Dec) in Unearned Revenue (0480)	1,279			1,279	
0063 Inc (Dec) in Other Current or Noncurrent Liabilities					
0067 Deferred Inflows (0950)					
Total Adjustments	(\$64,955)			(\$64,955)	
Cash Provided By (Used for) Total	(\$446,893)			(\$446,893)	

COMBINED STATEMENT OF CASH FLOWS  
SCHEDULE OF NONCASH INVESTING, CAPITAL, AND FINANCING ACTIVITIES

Explanation of Transaction and Balance Sheet Effect	Amount
Total	

LEA : 129546003     Pine Grove Area SD

Printed 12/3/2018 4:21:28 PM

Amounts Expressed in Whole Dollars	<u>Private Purpose Trust</u> <u>(71)</u>	<u>Investment Trust</u> <u>(72)</u>	<u>Pension Trust</u> <u>(73)</u>	<u>Activity</u> <u>(81)</u>
<b>Assets And Deferred Outflows Of Resources</b>				
<b>Assets</b>				
0100 Cash and Cash Equivalents	86,255			98,151
0110 Investments				
0130 Due From Other Funds	625			360
0147 Due from Component Unit				
0150 Other Receivables				
0170 Inventories				
0180 Prepaid Expenses (Expenditures)				
0190 Other Current Assets				
0220 Buildings and Building Improvements (Net)				
0230 Machinery, Equipment and Furniture (Net)				
<b>Total Assets</b>	<b>\$86,880</b>			<b>\$98,511</b>
0910 Deferred Outflows of Resources				
<b>Total Assets And Deferred Outflows Of Resources</b>	<b>\$86,880</b>			<b>\$98,511</b>

LEA : 129546003     Pine Grove Area SD

Printed 12/3/2018 4:21:28 PM

Amounts Expressed in Whole Dollars		<u>Other Agency</u> <u>(89)</u>	<u>Discrete Component Units</u> <u>(98)</u>	<u>Discrete Component Units</u> <u>(99)</u>	<u>Total Fiduciary Funds</u>
<b>Assets And Deferred Outflows Of Resources</b>					
<b>Assets</b>					
0100	Cash and Cash Equivalents				184,406
0110	Investments				
0130	Due From Other Funds				985
0147	Due from Component Unit				
0150	Other Receivables				
0170	Inventories				
0180	Prepaid Expenses (Expenditures)				
0190	Other Current Assets				
0220	Buildings and Building Improvements (Net)				
0230	Machinery, Equipment and Furniture (Net)				
<b>Total Assets</b>					<b>\$185,391</b>
0910	Deferred Outflows of Resources				
<b>Total Assets And Deferred Outflows Of Resources</b>					<b>\$185,391</b>

LEA : 129546003     Pine Grove Area SD

Printed 12/3/2018 4:21:28 PM

Amounts Expressed in Whole Dollars	<u>Private Purpose Trust</u> <u>(71)</u>	<u>Investment Trust</u> <u>(72)</u>	<u>Pension Trust</u> <u>(73)</u>	<u>Activity</u> <u>(81)</u>
<b>Liabilities, Deferred Inflows Of Resources And Net Position</b>				
<b>Liabilities</b>				
0400 Due to Other Funds	6,410			1,042
0411 Due to Other Governments				
0412 Due to Primary Government				
0413 Due to Component Unit				
0420 Accounts Payable				
0430 Contracts Payable				
0450 Short-Term Payables				
0461 Accrued Salaries and Benefits				
0462 Payroll Deductions and Withholding				
0480 Unearned Revenues				
0490 Other Current Liabilities				97,469
<b>Total Liabilities</b>	<b>\$6,410</b>			<b>\$98,511</b>
0950 Deferred Inflows of Resources				
<b>Net Position</b>				
0791 Net Investment in Capital Assets				
0009 Restricted Net Position (0792 – 0798)				
0799 Unrestricted Net Position	80,470			
<b>Total Net Position</b>	<b>\$80,470</b>			
<b>Total Liabilities, Deferred Inflows Of Resources And Net Position</b>	<b>\$86,880</b>			<b>\$98,511</b>

LEA : 129546003     Pine Grove Area SD

Printed 12/3/2018 4:21:28 PM

Amounts Expressed in Whole Dollars

<u>Other Agency</u> <u>(89)</u>	<u>Discrete Component Units</u> <u>(98)</u>	<u>Discrete Component Units</u> <u>(99)</u>	<u>Total Fiduciary Funds</u>
------------------------------------	--	--	------------------------------

Liabilities, Deferred Inflows Of Resources And Net Position

Liabilities

0400 Due to Other Funds				7,452
0411 Due to Other Governments				
0412 Due to Primary Government				
0413 Due to Component Unit				
0420 Accounts Payable				
0430 Contracts Payable				
0450 Short-Term Payables				
0461 Accrued Salaries and Benefits				
0462 Payroll Deductions and Withholding				
0480 Unearned Revenues				
0490 Other Current Liabilities				97,469
Total Liabilities				\$104,921

0950 Deferred Inflows of Resources

Net Position

0791 Net Investment in Capital Assets				
0009 Restricted Net Position (0792 – 0798)				
0799 Unrestricted Net Position				80,470
Total Net Position				\$80,470
Total Liabilities, Deferred Inflows Of Resources And Net Position				\$185,391

LEA : 129546003     Pine Grove Area SD

Printed 12/3/2018 4:21:29 PM

Amounts Expressed in Whole Dollars	<u>Private Purpose Trust</u> <u>(71)</u>	<u>Investment Trust</u> <u>(72)</u>	<u>Pension Trust</u> <u>(73)</u>	<u>Discrete Component</u> <u>Units</u> <u>(98)</u>	<u>Discrete Component</u> <u>Units</u> <u>(99)</u>	<u>Total Fiduciary</u> <u>Funds</u>
<b>Additions</b>						
0091 Gifts and Contributions	1,487					1,487
0092 Other Additions	1,168					1,168
<b>Deductions</b>						
0093 Scholarships Awarded	1,050					1,050
0094 Other Deductions						
<b>Change In Net Position</b>	<b>\$1,605</b>					<b>\$1,605</b>
0006 Net Position – Beginning of Fiscal Year	78,865					78,865
0007 Net Position Held in Trust for Pension Benefits						
<b>Net Position - End of Fiscal Year</b>	<b>\$80,470</b>					<b>\$80,470</b>



LEA : 129546003     Pine Grove Area SD

General Fund (10)

Printed 12/3/2018 4:21:30 PM

Page - 1 of 3

	Revenue Reported In Current Year	Current Year Tax Accrual	Prior Year Tax Accrual	Taxes Collected In Current Year
<b>Revenue from Local Sources</b>				
6111 Current Real Estate Taxes	8,054,896.17			8,054,896.17
6113 Public Utility Realty Taxes	10,646.63			10,646.63
6114 Payments in Lieu of Current Taxes - State / Local	21,427.41			21,427.41
6143 Current Act 511 Local Services Taxes	26,584.88			26,584.88
6151 Current Act 511 Earned Income Taxes	1,204,548.57			1,204,548.57
6152 Current Act 511 Occupation Taxes	827,525.00			827,525.00
6153 Current Act 511 Real Estate Transfer Taxes	130,101.80			130,101.80
6411 Delinquent Real Estate Taxes	509,459.04			509,459.04
6452 Delinquent Act 511 Occupation Taxes	222,077.43			222,077.43
6500 Earnings on Investments	131,892.04			
6700 Revenues from LEA Activities	62,097.35			
6831 Federal Revenue Received from Other Pennsylvania Public LEAs	105,770.46			
6832 Federal IDEA Revenue Received as Pass Through	247,984.00			
6833 Federal ARRA IDEA Revenue Received as Pass Through	7,380.00			
6910 Rentals	12,675.90			
6920 Contributions and Donations from Private Sources	2,379.18			
6941 Regular Day School Tuition	1,335.15			
6991 Refunds of a Prior Year Expenditure	3,962.77			
6999 Other Revenues Not Specified Above	54,590.44			
<b>TOTAL Revenue from Local Sources</b>	<b>\$11,637,334.22</b>			<b>\$11,007,266.93</b>

	Revenue Reported In Current Year			
<b>Revenue from State Sources</b>				
7110 Basic Education Funding	6,804,100.76			
7160 Tuition for Orphans Subsidy	42,670.93			
7271 Special Education funds for School-Aged Pupils	1,055,527.93			
7292 Pre-K Counts	46,556.16			
7299 Program Revenues Not Listed Previously in the 7200 Series	349.94			
7311 Pupil Transportation Subsidy	742,089.14			
7312 Nonpublic and Charter School Pupil Transportation Subsidy	13,090.00			
7320 Rental and Sinking Fund Payments / Building Reimbursement Subsidy	56,802.35			
7340 State Property Tax Reduction Allocation	579,891.70			
7505 Ready to Learn Block Grant	304,381.00			
7599 Other State Revenue Not Listed Elsewhere in the 7000 Series	56.40			
7810 State Share of Social Security and Medicare Taxes	424,980.27			
7820 State Share of Retirement Contributions	1,885,210.66			
<b>TOTAL Revenue from State Sources</b>	<b>\$11,955,707.24</b>			

Revenue Reported In Current Year				
Revenue from Federal Sources				
8390 Other Restricted Federal Grants-in-Aid Directly from the Federal Government	53,212.23			
8514 NCLB, Title I - Improving the Academic Achievement of the Disadvantaged	386,488.00			
8515 NCLB, Title II - Preparing, Training and Recruiting High Quality Teachers and Principals	66,810.00			
8517 NCLB, Title IV - 21St Century Schools	10,000.00			
8820 Medical Assistance Reimbursement for Administrative Claiming (Quarterly) Program	2,571.35			
TOTAL Revenue from Federal Sources	\$519,081.58			
TOTAL FROM ALL SOURCES	\$24,112,123.04			\$11,007,266.93

Revenue from Local Sources	11,637,334.22
Revenue from State Sources	11,955,707.24
Revenue from Federal Sources	519,081.58
Other Financing Sources	
<b>TOTAL FROM ALL SOURCES</b>	<b>\$24,112,123.04</b>

LEA : 129546003     Pine Grove Area SD

Printed 12/3/2018 4:21:34 PM

<b>General Fund (10)</b>	
<b>1000 Instruction</b>	<b><u>Total</u></b>
<b>100 <u>Personnel Services – Salaries</u></b>	
100 Personnel Services – Salaries	6,536,261.85
<b>Total Personnel Services – Salaries</b>	<b>\$6,536,261.85</b>
<b>200 <u>Personnel Services – Employee Benefits</u></b>	
210 Group Insurance – Contracted Provider	2,106,015.16
220 Social Security Contributions	480,830.73
230 PSERS Retirement Contributions	2,098,158.05
250 Unemployment Compensation	4,901.06
260 Workers' Compensation	54,907.09
<b>Total Personnel Services – Employee Benefits</b>	<b>\$4,744,812.09</b>
<b>300 <u>Purchased Professional and Technical Services</u></b>	
310 Official / Administrative Services	140,554.73
322 Professional Educational Services – lus	163,188.46
324 Professional Educational Services – Employee Training and Development Services	54,530.08
<b>Total Purchased Professional and Technical Services</b>	<b>\$358,273.27</b>
<b>400 <u>Purchased Property Services</u></b>	
430 Repairs and Maintenance Services	320,603.92
440 Rentals	39,883.96
<b>Total Purchased Property Services</b>	<b>\$360,487.88</b>
<b>500 <u>Other Purchased Services</u></b>	
510 Student Transportation Services	51,520.39
530 Communications	5,778.80
561 Tuition To Other School Districts Within the State	311,987.77
562 Tuition To Pennsylvania Charter Schools	311,685.29
564 Tuition To Career and Technology Centers	582,035.00
568 Tuition To Private Residential Rehabilitative Institutions (PRRI) [In-State] and Detention Centers	13,172.68
580 Travel	1,046.57
<b>Total Other Purchased Services</b>	<b>\$1,277,226.50</b>
<b>600 <u>Supplies</u></b>	
610 General Supplies	213,144.87
630 Food	1,576.08
640 Books and Periodicals	153,379.31
650 Supplies & Fees – Technology Related	7,120.60
<b>Total Supplies</b>	<b>\$375,220.86</b>
<b>700 <u>Property</u></b>	
762 Capitalized Equipment - Replacement	4,820.00
768 Capitalized Technology Software - Replacement	40,705.23
<b>Total Property</b>	<b>\$45,525.23</b>
<b>800 <u>Other Objects</u></b>	
810 Dues and Fees	1,933.00
890 Miscellaneous Expenditures	1,151.20

LEA : 129546003     Pine Grove Area SD

Printed 12/3/2018 4:21:34 PM

General Fund (10)

1000 Instruction

		<u>Total</u>
Total Other Objects		\$3,084.20
Total 1000 Instruction		\$13,700,891.88

LEA : 129546003     Pine Grove Area SD

Printed 12/3/2018 4:21:34 PM

<b>General Fund (10)</b>				
<b>1100 Regular Programs – Elementary / Secondary</b>	<b><u>Elementary</u></b>	<b><u>Secondary</u></b>	<b><u>Federal</u></b>	<b><u>Total</u></b>
<b>100 <u>Personnel Services – Salaries</u></b>				
100 Personnel Services – Salaries	2,584,499.13	2,331,950.66	315,371.49	5,231,821.28
<b>Total Personnel Services – Salaries</b>	<b>\$2,584,499.13</b>	<b>\$2,331,950.66</b>	<b>\$315,371.49</b>	<b>\$5,231,821.28</b>
<b>200 <u>Personnel Services – Employee Benefits</u></b>				
210 Group Insurance – Contracted Provider	1,056,037.20	736,896.82	44,413.02	1,837,347.04
220 Social Security Contributions	191,702.12	173,936.26	18,675.22	384,313.60
230 PSERS Retirement Contributions	823,021.62	768,301.86	82,034.02	1,673,357.50
250 Unemployment Compensation	1,705.34	1,509.82	133.48	3,348.64
260 Workers' Compensation	21,957.99	19,877.80	2,115.86	43,951.65
<b>Total Personnel Services – Employee Benefits</b>	<b>\$2,094,424.27</b>	<b>\$1,700,522.56</b>	<b>\$147,371.60</b>	<b>\$3,942,318.43</b>
<b>300 <u>Purchased Professional and Technical Services</u></b>				
310 Official / Administrative Services	70,277.37	70,277.36		140,554.73
322 Professional Educational Services – Ius			954.00	954.00
324 Professional Educational Services – Employee Training and Development Services	3,725.00	3,725.00	47,080.08	54,530.08
<b>Total Purchased Professional and Technical Services</b>	<b>\$74,002.37</b>	<b>\$74,002.36</b>	<b>\$48,034.08</b>	<b>\$196,038.81</b>
<b>400 <u>Purchased Property Services</u></b>				
430 Repairs and Maintenance Services	794.00	3,685.13		4,479.13
440 Rentals	21,005.72	18,878.24		39,883.96
<b>Total Purchased Property Services</b>	<b>\$21,799.72</b>	<b>\$22,563.37</b>		<b>\$44,363.09</b>
<b>500 <u>Other Purchased Services</u></b>				
510 Student Transportation Services	1,210.26	12,074.18	21,858.42	35,142.86
530 Communications	2,864.40	2,914.40		5,778.80
561 Tuition To Other School Districts Within the State	90,632.89	90,632.89		181,265.78
562 Tuition To Pennsylvania Charter Schools	155,761.10	155,761.09	163.10	311,685.29
568 Tuition To Private Residential Rehabilitative Institutions (PRRI) [In-State] and Detention Centers	3,765.11	3,765.11		7,530.22
580 Travel			1,046.57	1,046.57
<b>Total Other Purchased Services</b>	<b>\$254,233.76</b>	<b>\$265,147.67</b>	<b>\$23,068.09</b>	<b>\$542,449.52</b>
<b>600 <u>Supplies</u></b>				
610 General Supplies	43,562.88	126,059.55	33,664.80	203,287.23
640 Books and Periodicals	45,975.94	76,880.04	4,985.40	127,841.38
650 Supplies & Fees – Technology Related		7,120.60		7,120.60
<b>Total Supplies</b>	<b>\$89,538.82</b>	<b>\$210,060.19</b>	<b>\$38,650.20</b>	<b>\$338,249.21</b>
<b>700 <u>Property</u></b>				
762 Capitalized Equipment - Replacement	2,410.00	2,410.00		4,820.00
768 Capitalized Technology Software - Replacement		40,705.23		40,705.23
<b>Total Property</b>	<b>\$2,410.00</b>	<b>\$43,115.23</b>		<b>\$45,525.23</b>
<b>800 <u>Other Objects</u></b>				
810 Dues and Fees	68.00	1,612.00		1,680.00
890 Miscellaneous Expenditures		547.20		547.20
<b>Total Other Objects</b>	<b>\$68.00</b>	<b>\$2,159.20</b>		<b>\$2,227.20</b>
<b>Total 1100 Regular Programs – Elementary / Secondary</b>	<b>\$5,120,976.07</b>	<b>\$4,649,521.24</b>	<b>\$572,495.46</b>	<b>\$10,342,992.77</b>

LEA : 129546003     Pine Grove Area SD

Printed 12/3/2018 4:21:34 PM

General Fund (10)

1110 Regular Programs	Elementary	Secondary	Federal	Total
<b>100 Personnel Services – Salaries</b>				
100 Personnel Services – Salaries	2,584,499.13	2,331,950.66	66,661.49	4,983,111.28
<b>Total Personnel Services – Salaries</b>	<b>\$2,584,499.13</b>	<b>\$2,331,950.66</b>	<b>\$66,661.49</b>	<b>\$4,983,111.28</b>
<b>200 Personnel Services – Employee Benefits</b>				
210 Group Insurance – Contracted Provider	1,056,037.20	736,896.82	940.46	1,793,874.48
220 Social Security Contributions	191,702.12	173,936.26	4,534.94	370,173.32
230 PSERS Retirement Contributions	823,021.62	768,301.86	19,308.05	1,610,631.53
250 Unemployment Compensation	1,705.34	1,509.82	42.70	3,257.86
260 Workers' Compensation	21,957.99	19,877.80	497.91	42,333.70
<b>Total Personnel Services – Employee Benefits</b>	<b>\$2,094,424.27</b>	<b>\$1,700,522.56</b>	<b>\$25,324.06</b>	<b>\$3,820,270.89</b>
<b>300 Purchased Professional and Technical Services</b>				
310 Official / Administrative Services	70,277.37	70,277.36		140,554.73
324 Professional Educational Services – Employee Training and Development Services	3,725.00	3,725.00		7,450.00
<b>Total Purchased Professional and Technical Services</b>	<b>\$74,002.37</b>	<b>\$74,002.36</b>		<b>\$148,004.73</b>
<b>400 Purchased Property Services</b>				
430 Repairs and Maintenance Services	794.00	3,685.13		4,479.13
440 Rentals	21,005.72	18,878.24		39,883.96
<b>Total Purchased Property Services</b>	<b>\$21,799.72</b>	<b>\$22,563.37</b>		<b>\$44,363.09</b>
<b>500 Other Purchased Services</b>				
510 Student Transportation Services	1,210.26	12,074.18	21,858.42	35,142.86
530 Communications	2,864.40	2,914.40		5,778.80
561 Tuition To Other School Districts Within the State	90,632.89	90,632.89		181,265.78
562 Tuition To Pennsylvania Charter Schools	155,761.10	155,761.09	163.10	311,685.29
568 Tuition To Private Residential Rehabilitative Institutions (PRRI) [In-State] and Detention Centers	3,765.11	3,765.11		7,530.22
<b>Total Other Purchased Services</b>	<b>\$254,233.76</b>	<b>\$265,147.67</b>	<b>\$22,021.52</b>	<b>\$541,402.95</b>
<b>600 Supplies</b>				
610 General Supplies	43,562.88	126,059.55	1,500.00	171,122.43
640 Books and Periodicals	45,975.94	76,880.04		122,855.98
650 Supplies & Fees – Technology Related		7,120.60		7,120.60
<b>Total Supplies</b>	<b>\$89,538.82</b>	<b>\$210,060.19</b>	<b>\$1,500.00</b>	<b>\$301,099.01</b>
<b>700 Property</b>				
762 Capitalized Equipment - Replacement	2,410.00	2,410.00		4,820.00
768 Capitalized Technology Software - Replacement		40,705.23		40,705.23
<b>Total Property</b>	<b>\$2,410.00</b>	<b>\$43,115.23</b>		<b>\$45,525.23</b>
<b>800 Other Objects</b>				
810 Dues and Fees	68.00	1,612.00		1,680.00
890 Miscellaneous Expenditures		547.20		547.20
<b>Total Other Objects</b>	<b>\$68.00</b>	<b>\$2,159.20</b>		<b>\$2,227.20</b>
<b>Total 1110 Regular Programs</b>	<b>\$5,120,976.07</b>	<b>\$4,649,521.24</b>	<b>\$115,507.07</b>	<b>\$9,886,004.38</b>



LEA : 129546003     Pine Grove Area SD

Printed 12/3/2018 4:21:34 PM

General Fund (10)

1190 Federally-Funded Regular Programs

	Elementary	Secondary	Federal	Total
<b>100 <u>Personnel Services – Salaries</u></b>				
100 Personnel Services – Salaries			248,710.00	248,710.00
<b>Total Personnel Services – Salaries</b>			<b>\$248,710.00</b>	<b>\$248,710.00</b>
<b>200 <u>Personnel Services – Employee Benefits</u></b>				
210 Group Insurance – Contracted Provider			43,472.56	43,472.56
220 Social Security Contributions			14,140.28	14,140.28
230 PSERS Retirement Contributions			62,725.97	62,725.97
250 Unemployment Compensation			90.78	90.78
260 Workers' Compensation			1,617.95	1,617.95
<b>Total Personnel Services – Employee Benefits</b>			<b>\$122,047.54</b>	<b>\$122,047.54</b>
<b>300 <u>Purchased Professional and Technical Services</u></b>				
322 Professional Educational Services – Ius			954.00	954.00
324 Professional Educational Services – Employee Training and Development Services			47,080.08	47,080.08
<b>Total Purchased Professional and Technical Services</b>			<b>\$48,034.08</b>	<b>\$48,034.08</b>
<b>500 <u>Other Purchased Services</u></b>				
580 Travel			1,046.57	1,046.57
<b>Total Other Purchased Services</b>			<b>\$1,046.57</b>	<b>\$1,046.57</b>
<b>600 <u>Supplies</u></b>				
610 General Supplies			32,164.80	32,164.80
640 Books and Periodicals			4,985.40	4,985.40
<b>Total Supplies</b>			<b>\$37,150.20</b>	<b>\$37,150.20</b>
<b>Total 1190 Federally-Funded Regular Programs</b>			<b>\$456,988.39</b>	<b>\$456,988.39</b>

LEA : 129546003     Pine Grove Area SD

Printed 12/3/2018 4:21:34 PM

General Fund (10)

1200 Special Programs – Elementary / Secondary	Elementary	Secondary	Federal	Total
100 <u>Personnel Services – Salaries</u>				
100 Personnel Services – Salaries	724,190.67	519,491.88		1,243,682.55
<b>Total Personnel Services – Salaries</b>	<b>\$724,190.67</b>	<b>\$519,491.88</b>		<b>\$1,243,682.55</b>
200 <u>Personnel Services – Employee Benefits</u>				
210 Group Insurance – Contracted Provider	133,076.61	132,067.13	3,524.38	268,668.12
220 Social Security Contributions	53,748.38	38,133.72		91,882.10
230 PSERS Retirement Contributions	235,869.16	169,198.06		405,067.22
250 Unemployment Compensation	850.57	654.36		1,504.93
260 Workers' Compensation	6,082.91	4,363.60		10,446.51
<b>Total Personnel Services – Employee Benefits</b>	<b>\$429,627.63</b>	<b>\$344,416.87</b>	<b>\$3,524.38</b>	<b>\$777,568.88</b>
300 <u>Purchased Professional and Technical Services</u>				
322 Professional Educational Services – lus	23,752.56	23,752.54	4,604.36	52,109.46
<b>Total Purchased Professional and Technical Services</b>	<b>\$23,752.56</b>	<b>\$23,752.54</b>	<b>\$4,604.36</b>	<b>\$52,109.46</b>
500 <u>Other Purchased Services</u>				
510 Student Transportation Services		818.47		818.47
561 Tuition To Other School Districts Within the State	65,015.59	65,015.57		130,031.16
568 Tuition To Private Residential Rehabilitative Institutions (PRRI) [In-State] and Detention Centers	446.67	446.67		893.34
<b>Total Other Purchased Services</b>	<b>\$65,462.26</b>	<b>\$66,280.71</b>		<b>\$131,742.97</b>
600 <u>Supplies</u>				
610 General Supplies	6,951.16	2,826.96		9,778.12
630 Food	342.06	913.96		1,256.02
640 Books and Periodicals	12,768.97	12,768.96		25,537.93
<b>Total Supplies</b>	<b>\$20,062.19</b>	<b>\$16,509.88</b>		<b>\$36,572.07</b>
800 <u>Other Objects</u>				
810 Dues and Fees	253.00			253.00
890 Miscellaneous Expenditures	75.00	75.00		150.00
<b>Total Other Objects</b>	<b>\$328.00</b>	<b>\$75.00</b>		<b>\$403.00</b>
<b>Total 1200 Special Programs – Elementary / Secondary</b>	<b>\$1,263,423.31</b>	<b>\$970,526.88</b>	<b>\$8,128.74</b>	<b>\$2,242,078.93</b>

LEA : 129546003     Pine Grove Area SD

Printed 12/3/2018 4:21:34 PM

General Fund (10)				
1210 Life Skills Support				
	<u>Elementary</u>	<u>Secondary</u>	<u>Federal</u>	<u>Total</u>
100 <u>Personnel Services – Salaries</u>				
100 Personnel Services – Salaries	79,132.50	22,695.50		101,828.00
<b>Total Personnel Services – Salaries</b>	<b>\$79,132.50</b>	<b>\$22,695.50</b>		<b>\$101,828.00</b>
200 <u>Personnel Services – Employee Benefits</u>				
210 Group Insurance – Contracted Provider	15,744.18	511.09		16,255.27
220 Social Security Contributions	5,604.49	1,736.16		7,340.65
230 PSERS Retirement Contributions	25,773.44	7,391.92		33,165.36
250 Unemployment Compensation	44.75	13.74		58.49
260 Workers' Compensation	664.58	190.59		855.17
<b>Total Personnel Services – Employee Benefits</b>	<b>\$47,831.44</b>	<b>\$9,843.50</b>		<b>\$57,674.94</b>
500 <u>Other Purchased Services</u>				
510 Student Transportation Services		818.47		818.47
568 Tuition To Private Residential Rehabilitative Institutions (PRRI) [In-State] and Detention Centers	446.67	446.67		893.34
<b>Total Other Purchased Services</b>	<b>\$446.67</b>	<b>\$1,265.14</b>		<b>\$1,711.81</b>
600 <u>Supplies</u>				
610 General Supplies	1,252.52	842.87		2,095.39
630 Food	342.06	913.96		1,256.02
640 Books and Periodicals	1,090.50	1,090.50		2,181.00
<b>Total Supplies</b>	<b>\$2,685.08</b>	<b>\$2,847.33</b>		<b>\$5,532.41</b>
<b>Total 1210 Life Skills Support</b>	<b>\$130,095.69</b>	<b>\$36,651.47</b>		<b>\$166,747.16</b>

LEA : 129546003     Pine Grove Area SD

Printed 12/3/2018 4:21:34 PM

General Fund (10)				
1220 Sensory Support				
	<u>Elementary</u>	<u>Secondary</u>	<u>Federal</u>	<u>Total</u>
100 <u>Personnel Services – Salaries</u>				
100 Personnel Services – Salaries	176,217.44			176,217.44
Total Personnel Services – Salaries	\$176,217.44			\$176,217.44
200 <u>Personnel Services – Employee Benefits</u>				
210 Group Insurance – Contracted Provider	23,122.42			23,122.42
220 Social Security Contributions	13,252.08			13,252.08
230 PSERS Retirement Contributions	57,394.11			57,394.11
250 Unemployment Compensation	93.01			93.01
260 Workers' Compensation	1,480.22			1,480.22
Total Personnel Services – Employee Benefits	\$95,341.84			\$95,341.84
300 <u>Purchased Professional and Technical Services</u>				
322 Professional Educational Services – lus	20,068.24	20,068.23		40,136.47
Total Purchased Professional and Technical Services	\$20,068.24	\$20,068.23		\$40,136.47
500 <u>Other Purchased Services</u>				
561 Tuition To Other School Districts Within the State	17,482.83	17,482.82		34,965.65
Total Other Purchased Services	\$17,482.83	\$17,482.82		\$34,965.65
600 <u>Supplies</u>				
610 General Supplies	2,066.00			2,066.00
Total Supplies	\$2,066.00			\$2,066.00
800 <u>Other Objects</u>				
810 Dues and Fees	253.00			253.00
Total Other Objects	\$253.00			\$253.00
Total 1220 Sensory Support	\$311,429.35	\$37,551.05		\$348,980.40

LEA : 129546003     Pine Grove Area SD

Printed 12/3/2018 4:21:34 PM

General Fund (10)				
1230 Emotional Support	<u>Elementary</u>	<u>Secondary</u>	<u>Federal</u>	<u>Total</u>
100 <u>Personnel Services – Salaries</u>				
100 Personnel Services – Salaries	61,403.50	20,141.50		81,545.00
<b>Total Personnel Services – Salaries</b>	<b>\$61,403.50</b>	<b>\$20,141.50</b>		<b>\$81,545.00</b>
200 <u>Personnel Services – Employee Benefits</u>				
210 Group Insurance – Contracted Provider	10,833.22	3,187.55		14,020.77
220 Social Security Contributions	4,589.51	1,509.07		6,098.58
230 PSERS Retirement Contributions	19,999.17	6,560.05		26,559.22
250 Unemployment Compensation	61.60	30.59		92.19
260 Workers' Compensation	515.72	169.14		684.86
<b>Total Personnel Services – Employee Benefits</b>	<b>\$35,999.22</b>	<b>\$11,456.40</b>		<b>\$47,455.62</b>
500 <u>Other Purchased Services</u>				
561 Tuition To Other School Districts Within the State	7,268.86	7,268.85		14,537.71
<b>Total Other Purchased Services</b>	<b>\$7,268.86</b>	<b>\$7,268.85</b>		<b>\$14,537.71</b>
600 <u>Supplies</u>				
610 General Supplies	743.50	470.14		1,213.64
640 Books and Periodicals	11,678.47	11,678.46		23,356.93
<b>Total Supplies</b>	<b>\$12,421.97</b>	<b>\$12,148.60</b>		<b>\$24,570.57</b>
<b>Total 1230 Emotional Support</b>	<b>\$117,093.55</b>	<b>\$51,015.35</b>		<b>\$168,108.90</b>

LEA : 129546003     Pine Grove Area SD

Printed 12/3/2018 4:21:34 PM

General Fund (10)				
1240 Academic Support	<u>Elementary</u>	<u>Secondary</u>	<u>Federal</u>	<u>Total</u>
100 <u>Personnel Services – Salaries</u>				
100 Personnel Services – Salaries	345,280.23	476,654.88		821,935.11
<b>Total Personnel Services – Salaries</b>	<b>\$345,280.23</b>	<b>\$476,654.88</b>		<b>\$821,935.11</b>
200 <u>Personnel Services – Employee Benefits</u>				
210 Group Insurance – Contracted Provider	63,003.89	128,368.49	3,524.38	194,896.76
220 Social Security Contributions	25,768.19	34,888.49		60,656.68
230 PSERS Retirement Contributions	112,458.01	155,246.09		267,704.10
250 Unemployment Compensation	620.21	610.03		1,230.24
260 Workers' Compensation	2,900.30	4,003.87		6,904.17
<b>Total Personnel Services – Employee Benefits</b>	<b>\$204,750.60</b>	<b>\$323,116.97</b>	<b>\$3,524.38</b>	<b>\$531,391.95</b>
300 <u>Purchased Professional and Technical Services</u>				
322 Professional Educational Services – lus	1,401.57	1,401.56		2,803.13
<b>Total Purchased Professional and Technical Services</b>	<b>\$1,401.57</b>	<b>\$1,401.56</b>		<b>\$2,803.13</b>
500 <u>Other Purchased Services</u>				
561 Tuition To Other School Districts Within the State	40,263.90	40,263.90		80,527.80
<b>Total Other Purchased Services</b>	<b>\$40,263.90</b>	<b>\$40,263.90</b>		<b>\$80,527.80</b>
600 <u>Supplies</u>				
610 General Supplies	2,080.13	1,513.95		3,594.08
<b>Total Supplies</b>	<b>\$2,080.13</b>	<b>\$1,513.95</b>		<b>\$3,594.08</b>
800 <u>Other Objects</u>				
890 Miscellaneous Expenditures	75.00	75.00		150.00
<b>Total Other Objects</b>	<b>\$75.00</b>	<b>\$75.00</b>		<b>\$150.00</b>
<b>Total 1240 Academic Support</b>	<b>\$593,851.43</b>	<b>\$843,026.26</b>	<b>\$3,524.38</b>	<b>\$1,440,402.07</b>

LEA : 129546003     Pine Grove Area SD

Printed 12/3/2018 4:21:34 PM

General Fund (10)				
1241 Learning Support – Public	<u>Elementary</u>	<u>Secondary</u>	<u>Federal</u>	<u>Total</u>
100 <u>Personnel Services – Salaries</u>				
100 Personnel Services – Salaries	345,280.23	476,654.88		821,935.11
<b>Total Personnel Services – Salaries</b>	<b>\$345,280.23</b>	<b>\$476,654.88</b>		<b>\$821,935.11</b>
200 <u>Personnel Services – Employee Benefits</u>				
210 Group Insurance – Contracted Provider	63,003.89	128,368.49	3,524.38	194,896.76
220 Social Security Contributions	25,768.19	34,888.49		60,656.68
230 PSERS Retirement Contributions	112,458.01	155,246.09		267,704.10
250 Unemployment Compensation	620.21	610.03		1,230.24
260 Workers' Compensation	2,900.30	4,003.87		6,904.17
<b>Total Personnel Services – Employee Benefits</b>	<b>\$204,750.60</b>	<b>\$323,116.97</b>	<b>\$3,524.38</b>	<b>\$531,391.95</b>
300 <u>Purchased Professional and Technical Services</u>				
322 Professional Educational Services – lus	1,401.57	1,401.56		2,803.13
<b>Total Purchased Professional and Technical Services</b>	<b>\$1,401.57</b>	<b>\$1,401.56</b>		<b>\$2,803.13</b>
500 <u>Other Purchased Services</u>				
561 Tuition To Other School Districts Within the State	40,263.90	40,263.90		80,527.80
<b>Total Other Purchased Services</b>	<b>\$40,263.90</b>	<b>\$40,263.90</b>		<b>\$80,527.80</b>
600 <u>Supplies</u>				
610 General Supplies	1,103.75	1,034.15		2,137.90
<b>Total Supplies</b>	<b>\$1,103.75</b>	<b>\$1,034.15</b>		<b>\$2,137.90</b>
<b>Total 1241 Learning Support – Public</b>	<b>\$592,800.05</b>	<b>\$842,471.46</b>	<b>\$3,524.38</b>	<b>\$1,438,795.89</b>

LEA : 129546003 Pine Grove Area SD

Printed 12/3/2018 4:21:34 PM

General Fund (10)

1243 Gifted Support

	<u>Elementary</u>	<u>Secondary</u>	<u>Federal</u>	<u>Total</u>
<b>600 <u>Supplies</u></b>				
610 General Supplies	976.38	479.80		1,456.18
<b>Total Supplies</b>	<b>\$976.38</b>	<b>\$479.80</b>		<b>\$1,456.18</b>
<b>800 <u>Other Objects</u></b>				
890 Miscellaneous Expenditures	75.00	75.00		150.00
<b>Total Other Objects</b>	<b>\$75.00</b>	<b>\$75.00</b>		<b>\$150.00</b>
<b>Total 1243 Gifted Support</b>	<b>\$1,051.38</b>	<b>\$554.80</b>		<b>\$1,606.18</b>



LEA : 129546003 Pine Grove Area SD

Printed 12/3/2018 4:21:34 PM

General Fund (10)

1260 Physical Support	Elementary	Secondary	Federal	Total
<b>100 Personnel Services – Salaries</b>				
100 Personnel Services – Salaries	62,157.00			62,157.00
<b>Total Personnel Services – Salaries</b>	<b>\$62,157.00</b>			<b>\$62,157.00</b>
<b>200 Personnel Services – Employee Benefits</b>				
210 Group Insurance – Contracted Provider	20,372.90			20,372.90
220 Social Security Contributions	4,534.11			4,534.11
230 PSERS Retirement Contributions	20,244.43			20,244.43
250 Unemployment Compensation	31.00			31.00
260 Workers' Compensation	522.09			522.09
<b>Total Personnel Services – Employee Benefits</b>	<b>\$45,704.53</b>			<b>\$45,704.53</b>
<b>300 Purchased Professional and Technical Services</b>				
322 Professional Educational Services – lus	2,282.75	2,282.75		4,565.50
<b>Total Purchased Professional and Technical Services</b>	<b>\$2,282.75</b>	<b>\$2,282.75</b>		<b>\$4,565.50</b>
<b>600 Supplies</b>				
610 General Supplies	809.01			809.01
<b>Total Supplies</b>	<b>\$809.01</b>			<b>\$809.01</b>
<b>Total 1260 Physical Support</b>	<b>\$110,953.29</b>	<b>\$2,282.75</b>		<b>\$113,236.04</b>

LEA : 129546003 Pine Grove Area SD

Printed 12/3/2018 4:21:34 PM

General Fund (10)

1280 Early Intervention Support

	<u>Elementary</u>	<u>Secondary</u>	<u>Federal</u>	<u>Total</u>
300 <u>Purchased Professional and Technical Services</u>				
322 Professional Educational Services – lus			4,604.36	4,604.36
Total Purchased Professional and Technical Services			\$4,604.36	\$4,604.36
Total 1280 Early Intervention Support			\$4,604.36	\$4,604.36

LEA : 129546003     Pine Grove Area SD

Printed 12/3/2018 4:21:34 PM

General Fund (10)

1300 Vocational Education

Elementary                      Secondary                      Federal                      Total

400 Purchased Property Services

430 Repairs and Maintenance Services    316,124.79                      316,124.79

**Total Purchased Property Services    \$316,124.79                      \$316,124.79**

500 Other Purchased Services

564 Tuition To Career and Technology Centers    582,035.00                      582,035.00

**Total Other Purchased Services    \$582,035.00                      \$582,035.00**

**Total 1300 Vocational Education    \$898,159.79                      \$898,159.79**

LEA : 129546003     Pine Grove Area SD

Printed 12/3/2018 4:21:34 PM

General Fund (10)

1400 Other Instructional Programs – Elementary / Secondary	Elementary	Secondary	Federal	Total
100 <u>Personnel Services – Salaries</u>				
100 Personnel Services – Salaries	5,284.41	5,284.41	50,189.20	60,758.02
<b>Total Personnel Services – Salaries</b>	<b>\$5,284.41</b>	<b>\$5,284.41</b>	<b>\$50,189.20</b>	<b>\$60,758.02</b>
200 <u>Personnel Services – Employee Benefits</u>				
220 Social Security Contributions	404.22	404.21	3,826.60	4,635.03
230 PSERS Retirement Contributions	1,721.11	1,721.11	16,291.11	19,733.33
250 Unemployment Compensation	3.20	3.18	41.11	47.49
260 Workers' Compensation	44.39	44.38	420.16	508.93
<b>Total Personnel Services – Employee Benefits</b>	<b>\$2,172.92</b>	<b>\$2,172.88</b>	<b>\$20,578.98</b>	<b>\$24,924.78</b>
300 <u>Purchased Professional and Technical Services</u>				
322 Professional Educational Services – Ius	55,062.50	55,062.50		110,125.00
<b>Total Purchased Professional and Technical Services</b>	<b>\$55,062.50</b>	<b>\$55,062.50</b>		<b>\$110,125.00</b>
500 <u>Other Purchased Services</u>				
510 Student Transportation Services	7,762.88	7,762.87	33.31	15,559.06
561 Tuition To Other School Districts Within the State	345.42	345.41		690.83
568 Tuition To Private Residential Rehabilitative Institutions (PRRI) [In-State] and Detention Centers	2,374.56	2,374.56		4,749.12
<b>Total Other Purchased Services</b>	<b>\$10,482.86</b>	<b>\$10,482.84</b>	<b>\$33.31</b>	<b>\$20,999.01</b>
600 <u>Supplies</u>				
610 General Supplies	5.95	5.94	67.63	79.52
630 Food	160.03	160.03		320.06
<b>Total Supplies</b>	<b>\$165.98</b>	<b>\$165.97</b>	<b>\$67.63</b>	<b>\$399.58</b>
800 <u>Other Objects</u>				
890 Miscellaneous Expenditures			454.00	454.00
<b>Total Other Objects</b>			<b>\$454.00</b>	<b>\$454.00</b>
<b>Total 1400 Other Instructional Programs – Elementary / Secondary</b>	<b>\$73,168.67</b>	<b>\$73,168.60</b>	<b>\$71,323.12</b>	<b>\$217,660.39</b>

LEA : 129546003     Pine Grove Area SD

Printed 12/3/2018 4:21:34 PM

General Fund (10)

1430 Homebound Instruction	<u>Elementary</u>	<u>Secondary</u>	<u>Federal</u>	<u>Total</u>
<b>100 <u>Personnel Services – Salaries</u></b>				
100 Personnel Services – Salaries	297.00	297.00		594.00
<b>Total Personnel Services – Salaries</b>	<b>\$297.00</b>	<b>\$297.00</b>		<b>\$594.00</b>
<b>200 <u>Personnel Services – Employee Benefits</u></b>				
220 Social Security Contributions	22.72	22.71		45.43
230 PSERS Retirement Contributions	96.73	96.73		193.46
250 Unemployment Compensation	0.34	0.33		0.67
260 Workers' Compensation	2.49	2.49		4.98
<b>Total Personnel Services – Employee Benefits</b>	<b>\$122.28</b>	<b>\$122.26</b>		<b>\$244.54</b>
<b>Total 1430 Homebound Instruction</b>	<b>\$419.28</b>	<b>\$419.26</b>		<b>\$838.54</b>

LEA : 129546003     Pine Grove Area SD

Printed 12/3/2018 4:21:34 PM

General Fund (10)

1440 Alternative Regular Education Programs	<u>Elementary</u>	<u>Secondary</u>	<u>Federal</u>	<u>Total</u>
300 <u>Purchased Professional and Technical Services</u>				
322 Professional Educational Services – lus	55,062.50	55,062.50		110,125.00
Total Purchased Professional and Technical Services	\$55,062.50	\$55,062.50		\$110,125.00
500 <u>Other Purchased Services</u>				
561 Tuition To Other School Districts Within the State	345.42	345.41		690.83
568 Tuition To Private Residential Rehabilitative Institutions (PRRI) [In-State] and Detention Centers	2,374.56	2,374.56		4,749.12
Total Other Purchased Services	\$2,719.98	\$2,719.97		\$5,439.95
Total 1440 Alternative Regular Education Programs	\$57,782.48	\$57,782.47		\$115,564.95

LEA : 129546003     Pine Grove Area SD

Printed 12/3/2018 4:21:34 PM

General Fund (10)

1441 Adjudicated / Court-Placed Programs	<u>Elementary</u>	<u>Secondary</u>	<u>Federal</u>	<u>Total</u>
500 <u>Other Purchased Services</u>				
561 Tuition To Other School Districts Within the State	345.42	345.41		690.83
Total Other Purchased Services	\$345.42	\$345.41		\$690.83
Total 1441 Adjudicated / Court-Placed Programs	\$345.42	\$345.41		\$690.83

LEA : 129546003 Pine Grove Area SD

Printed 12/3/2018 4:21:34 PM

General Fund (10)

1442 Alternative Education Programs	<u>Elementary</u>	<u>Secondary</u>	<u>Federal</u>	<u>Total</u>
300 <u>Purchased Professional and Technical Services</u>				
322 Professional Educational Services – Ius	55,062.50	55,062.50		110,125.00
Total Purchased Professional and Technical Services	\$55,062.50	\$55,062.50		\$110,125.00
500 <u>Other Purchased Services</u>				
568 Tuition To Private Residential Rehabilitative Institutions (PRRI) [In-State] and Detention Centers	2,374.56	2,374.56		4,749.12
Total Other Purchased Services	\$2,374.56	\$2,374.56		\$4,749.12
Total 1442 Alternative Education Programs	\$57,437.06	\$57,437.06		\$114,874.12



LEA : 129546003     Pine Grove Area SD

Printed 12/3/2018 4:21:34 PM

<b>General Fund (10)</b>				
<b>1450 Instructional Programs Outside the Established School Day</b>	<b><u>Elementary</u></b>	<b><u>Secondary</u></b>	<b><u>Federal</u></b>	<b><u>Total</u></b>
<b>100 <u>Personnel Services – Salaries</u></b>				
100 Personnel Services – Salaries	4,987.41	4,987.41	50,189.20	60,164.02
<b>Total Personnel Services – Salaries</b>	<b>\$4,987.41</b>	<b>\$4,987.41</b>	<b>\$50,189.20</b>	<b>\$60,164.02</b>
<b>200 <u>Personnel Services – Employee Benefits</u></b>				
220 Social Security Contributions	381.50	381.50	3,826.60	4,589.60
230 PSERS Retirement Contributions	1,624.38	1,624.38	16,291.11	19,539.87
250 Unemployment Compensation	2.86	2.85	41.11	46.82
260 Workers' Compensation	41.90	41.89	420.16	503.95
<b>Total Personnel Services – Employee Benefits</b>	<b>\$2,050.64</b>	<b>\$2,050.62</b>	<b>\$20,578.98</b>	<b>\$24,680.24</b>
<b>500 <u>Other Purchased Services</u></b>				
510 Student Transportation Services	7,762.88	7,762.87	33.31	15,559.06
<b>Total Other Purchased Services</b>	<b>\$7,762.88</b>	<b>\$7,762.87</b>	<b>\$33.31</b>	<b>\$15,559.06</b>
<b>600 <u>Supplies</u></b>				
610 General Supplies	5.95	5.94	67.63	79.52
630 Food	160.03	160.03		320.06
<b>Total Supplies</b>	<b>\$165.98</b>	<b>\$165.97</b>	<b>\$67.63</b>	<b>\$399.58</b>
<b>800 <u>Other Objects</u></b>				
890 Miscellaneous Expenditures			454.00	454.00
<b>Total Other Objects</b>			<b>\$454.00</b>	<b>\$454.00</b>
<b>Total 1450 Instructional Programs Outside the Established School Day</b>	<b>\$14,966.91</b>	<b>\$14,966.87</b>	<b>\$71,323.12</b>	<b>\$101,256.90</b>

LEA : 129546003     Pine Grove Area SD

Printed 12/3/2018 4:21:36 PM

General Fund (10)

<b>2000 Support Services</b>		<b><u>Total</u></b>
<b>100 <u>Personnel Services – Salaries</u></b>		
100 Personnel Services – Salaries	2,730,367.75	
<b>Total Personnel Services – Salaries</b>	<b>\$2,730,367.75</b>	
<b>200 <u>Personnel Services – Employee Benefits</u></b>		
210 Group Insurance – Contracted Provider	638,258.21	
220 Social Security Contributions	203,284.18	
230 PSERS Retirement Contributions	852,663.11	
240 Tuition Reimbursement	89,363.28	
250 Unemployment Compensation	2,009.01	
260 Workers' Compensation	22,922.61	
280 Other Post-Employment Benefits (OPEB)	2,428.35	
<b>Total Personnel Services – Employee Benefits</b>	<b>\$1,810,928.75</b>	
<b>300 <u>Purchased Professional and Technical Services</u></b>		
310 Official / Administrative Services	440.17	
322 Professional Educational Services – Ius	222,892.83	
324 Professional Educational Services – Employee Training and Development Services	44,394.53	
330 Other Professional Services	90,221.94	
340 Technical Services	82,816.18	
<b>Total Purchased Professional and Technical Services</b>	<b>\$440,765.65</b>	
<b>400 <u>Purchased Property Services</u></b>		
410 Cleaning Services	13,610.64	
420 Utility Services	179,777.87	
430 Repairs and Maintenance Services	51,172.61	
440 Rentals	10,942.05	
460 Extermination Services	1,808.73	
<b>Total Purchased Property Services</b>	<b>\$257,311.90</b>	
<b>500 <u>Other Purchased Services</u></b>		
513 Contracted Carriers	1,176,322.71	
520 Insurance – General	11,657.00	
522 Automotive Liability Insurance	6,508.00	
523 General Property and Liability Insurance	57,062.00	
529 Other Insurance	27,725.00	
530 Communications	63,686.66	
549 Other Advertising/Public Relations	7,869.70	
550 Printing and Binding	699.70	
580 Travel	17,695.89	
599 Other Miscellaneous Purchased Services	1,054.70	
<b>Total Other Purchased Services</b>	<b>\$1,370,281.36</b>	
<b>600 <u>Supplies</u></b>		
610 General Supplies	278,819.60	
620 Energy	26,605.10	
630 Food	2,072.22	
640 Books and Periodicals	2,429.41	

LEA : 129546003     Pine Grove Area SD

Printed 12/3/2018 4:21:36 PM

General Fund (10)

2000 Support Services

	<u>Total</u>
<b>Total Supplies</b>	<b>\$309,926.33</b>
<b>700 <u>Property</u></b>	
758 Capitalized Technology Software - Original	15,922.73
768 Capitalized Technology Software - Replacement	45,327.50
<b>Total Property</b>	<b>\$61,250.23</b>
<b>800 <u>Other Objects</u></b>	
810 Dues and Fees	37,898.04
<b>Total Other Objects</b>	<b>\$37,898.04</b>
<b>Total 2000 Support Services</b>	<b>\$7,018,730.01</b>

LEA : 129546003     Pine Grove Area SD

Printed 12/3/2018 4:21:36 PM

General Fund (10)				
2100 Support Services – Students	<u>Elementary</u>	<u>Secondary</u>	<u>Federal</u>	<u>Total</u>
100 <u>Personnel Services – Salaries</u>				
100 Personnel Services – Salaries	159,609.42	233,844.83		460,526.75
<b>Total Personnel Services – Salaries</b>	<b>\$159,609.42</b>	<b>\$233,844.83</b>		<b>\$460,526.75</b>
200 <u>Personnel Services – Employee Benefits</u>				
210 Group Insurance – Contracted Provider	27,580.78	55,907.86		100,300.59
220 Social Security Contributions	11,957.67	17,368.94		34,371.63
230 PSERS Retirement Contributions	51,984.80	76,163.18		149,993.77
250 Unemployment Compensation	76.29	138.21		246.13
260 Workers' Compensation	1,340.76	1,964.34		3,868.53
<b>Total Personnel Services – Employee Benefits</b>	<b>\$92,940.30</b>	<b>\$151,542.53</b>		<b>\$288,780.65</b>
300 <u>Purchased Professional and Technical Services</u>				
324 Professional Educational Services – Employee Training and Development Services	97.50	97.50		245.00
<b>Total Purchased Professional and Technical Services</b>	<b>\$97.50</b>	<b>\$97.50</b>		<b>\$245.00</b>
500 <u>Other Purchased Services</u>				
580 Travel	590.08	993.66		2,934.84
<b>Total Other Purchased Services</b>	<b>\$590.08</b>	<b>\$993.66</b>		<b>\$2,934.84</b>
600 <u>Supplies</u>				
610 General Supplies	6,801.76	566.44	752.92	8,484.72
<b>Total Supplies</b>	<b>\$6,801.76</b>	<b>\$566.44</b>	<b>\$752.92</b>	<b>\$8,484.72</b>
800 <u>Other Objects</u>				
810 Dues and Fees	269.75	18,397.75		19,382.50
<b>Total Other Objects</b>	<b>\$269.75</b>	<b>\$18,397.75</b>		<b>\$19,382.50</b>
<b>Total 2100 Support Services – Students</b>	<b>\$260,308.81</b>	<b>\$405,442.71</b>	<b>\$752.92</b>	<b>\$780,354.46</b>

LEA : 129546003     Pine Grove Area SD

Printed 12/3/2018 4:21:36 PM

<b>General Fund (10)</b>				
<b>2120 Guidance Services</b>	<u>Elementary</u>	<u>Secondary</u>	<u>Federal</u>	<u>Total</u>
<b>100 <u>Personnel Services – Salaries</u></b>				
100 Personnel Services – Salaries	92,483.00	166,718.42		259,201.42
<b>Total Personnel Services – Salaries</b>	<b>\$92,483.00</b>	<b>\$166,718.42</b>		<b>\$259,201.42</b>
<b>200 <u>Personnel Services – Employee Benefits</u></b>				
210 Group Insurance – Contracted Provider	7,801.93	36,129.02		43,930.95
220 Social Security Contributions	6,998.83	12,410.10		19,408.93
230 PSERS Retirement Contributions	30,121.76	54,300.14		84,421.90
250 Unemployment Compensation	45.30	107.22		152.52
260 Workers' Compensation	776.90	1,400.49		2,177.39
<b>Total Personnel Services – Employee Benefits</b>	<b>\$45,744.72</b>	<b>\$104,346.97</b>		<b>\$150,091.69</b>
<b>500 <u>Other Purchased Services</u></b>				
580 Travel	446.99	850.58		1,297.57
<b>Total Other Purchased Services</b>	<b>\$446.99</b>	<b>\$850.58</b>		<b>\$1,297.57</b>
<b>600 <u>Supplies</u></b>				
610 General Supplies	886.51	566.44		1,452.95
<b>Total Supplies</b>	<b>\$886.51</b>	<b>\$566.44</b>		<b>\$1,452.95</b>
<b>800 <u>Other Objects</u></b>				
810 Dues and Fees		18,128.00		18,128.00
<b>Total Other Objects</b>		<b>\$18,128.00</b>		<b>\$18,128.00</b>
<b>Total 2120 Guidance Services</b>	<b>\$139,561.22</b>	<b>\$290,610.41</b>		<b>\$430,171.63</b>

LEA : 129546003     Pine Grove Area SD

Printed 12/3/2018 4:21:36 PM

General Fund (10)				
2140 Psychological Services				
	<u>Elementary</u>	<u>Secondary</u>	<u>Federal</u>	<u>Total</u>
100 <u>Personnel Services – Salaries</u>				
100 Personnel Services – Salaries	67,126.42	67,126.41		134,252.83
<b>Total Personnel Services – Salaries</b>	<b>\$67,126.42</b>	<b>\$67,126.41</b>		<b>\$134,252.83</b>
200 <u>Personnel Services – Employee Benefits</u>				
210 Group Insurance – Contracted Provider	19,778.85	19,778.84		39,557.69
220 Social Security Contributions	4,958.84	4,958.84		9,917.68
230 PSERS Retirement Contributions	21,863.04	21,863.04		43,726.08
250 Unemployment Compensation	30.99	30.99		61.98
260 Workers' Compensation	563.86	563.85		1,127.71
<b>Total Personnel Services – Employee Benefits</b>	<b>\$47,195.58</b>	<b>\$47,195.56</b>		<b>\$94,391.14</b>
300 <u>Purchased Professional and Technical Services</u>				
324 Professional Educational Services – Employee Training and Development Services	97.50	97.50		195.00
<b>Total Purchased Professional and Technical Services</b>	<b>\$97.50</b>	<b>\$97.50</b>		<b>\$195.00</b>
500 <u>Other Purchased Services</u>				
580 Travel	143.09	143.08		286.17
<b>Total Other Purchased Services</b>	<b>\$143.09</b>	<b>\$143.08</b>		<b>\$286.17</b>
600 <u>Supplies</u>				
610 General Supplies	5,915.25			5,915.25
<b>Total Supplies</b>	<b>\$5,915.25</b>			<b>\$5,915.25</b>
800 <u>Other Objects</u>				
810 Dues and Fees	269.75	269.75		539.50
<b>Total Other Objects</b>	<b>\$269.75</b>	<b>\$269.75</b>		<b>\$539.50</b>
<b>Total 2140 Psychological Services</b>	<b>\$120,747.59</b>	<b>\$114,832.30</b>		<b>\$235,579.89</b>

LEA : 129546003     Pine Grove Area SD

Printed 12/3/2018 4:21:36 PM

General Fund (10)				
2160 Social Work Services	<u>Elementary</u>	<u>Secondary</u>	<u>Federal</u>	<u>Total</u>
100 <u>Personnel Services – Salaries</u>				
100 Personnel Services – Salaries				67,072.50
Total Personnel Services – Salaries				\$67,072.50
200 <u>Personnel Services – Employee Benefits</u>				
210 Group Insurance – Contracted Provider				16,811.95
220 Social Security Contributions				5,045.02
230 PSERS Retirement Contributions				21,845.79
250 Unemployment Compensation				31.63
260 Workers' Compensation				563.43
Total Personnel Services – Employee Benefits				\$44,297.82
300 <u>Purchased Professional and Technical Services</u>				
324 Professional Educational Services – Employee Training and Development Services				50.00
Total Purchased Professional and Technical Services				\$50.00
500 <u>Other Purchased Services</u>				
580 Travel				1,351.10
Total Other Purchased Services				\$1,351.10
600 <u>Supplies</u>				
610 General Supplies			752.92	752.92
Total Supplies			\$752.92	\$752.92
800 <u>Other Objects</u>				
810 Dues and Fees				400.00
Total Other Objects				\$400.00
Total 2160 Social Work Services			\$752.92	\$113,924.34

LEA : 129546003 Pine Grove Area SD

Printed 12/3/2018 4:21:36 PM

General Fund (10)

2170 Student Accounting Services	<u>Elementary</u>	<u>Secondary</u>	<u>Federal</u>	<u>Total</u>
600 <u>Supplies</u>				
610 General Supplies				363.60
Total Supplies				\$363.60
800 <u>Other Objects</u>				
810 Dues and Fees				315.00
Total Other Objects				\$315.00
Total 2170 Student Accounting Services				\$678.60



LEA : 129546003     Pine Grove Area SD

Printed 12/3/2018 4:21:36 PM

<b>General Fund (10)</b>				
<b>2200 Support Services – Instructional Staff</b>	<b><u>Elementary</u></b>	<b><u>Secondary</u></b>	<b><u>Federal</u></b>	<b><u>Total</u></b>
<b>100 <u>Personnel Services – Salaries</u></b>				
100 Personnel Services – Salaries	239,468.97	180,998.34	567.00	421,034.31
<b>Total Personnel Services – Salaries</b>	<b>\$239,468.97</b>	<b>\$180,998.34</b>	<b>\$567.00</b>	<b>\$421,034.31</b>
<b>200 <u>Personnel Services – Employee Benefits</u></b>				
210 Group Insurance – Contracted Provider	46,148.09	38,460.31		84,608.40
220 Social Security Contributions	17,823.06	13,426.21	43.37	31,292.64
230 PSERS Retirement Contributions	77,995.15	58,951.24	184.67	137,131.06
240 Tuition Reimbursement	27,638.81	61,724.47		89,363.28
250 Unemployment Compensation	173.37	117.42		290.79
260 Workers' Compensation	2,011.53	1,520.45	4.76	3,536.74
<b>Total Personnel Services – Employee Benefits</b>	<b>\$171,790.01</b>	<b>\$174,200.10</b>	<b>\$232.80</b>	<b>\$346,222.91</b>
<b>300 <u>Purchased Professional and Technical Services</u></b>				
324 Professional Educational Services – Employee Training and Development Services	6,099.98	2,693.98		8,793.96
330 Other Professional Services	5,272.50	5,272.50		10,545.00
340 Technical Services	33,973.50	33,973.50		67,947.00
<b>Total Purchased Professional and Technical Services</b>	<b>\$45,345.98</b>	<b>\$41,939.98</b>		<b>\$87,285.96</b>
<b>400 <u>Purchased Property Services</u></b>				
430 Repairs and Maintenance Services	5,576.85	5,902.98		11,479.83
440 Rentals	2,964.25	2,964.24		5,928.49
<b>Total Purchased Property Services</b>	<b>\$8,541.10</b>	<b>\$8,867.22</b>		<b>\$17,408.32</b>
<b>500 <u>Other Purchased Services</u></b>				
530 Communications	16,747.91	16,747.90		33,495.81
550 Printing and Binding	199.85	199.85		399.70
580 Travel	2,417.44	4,298.08	3,533.34	10,248.86
<b>Total Other Purchased Services</b>	<b>\$19,365.20</b>	<b>\$21,245.83</b>	<b>\$3,533.34</b>	<b>\$44,144.37</b>
<b>600 <u>Supplies</u></b>				
610 General Supplies	51,635.50	57,116.85		108,752.35
630 Food	325.02	432.85		757.87
640 Books and Periodicals	1,490.74	495.75		1,986.49
<b>Total Supplies</b>	<b>\$53,451.26</b>	<b>\$58,045.45</b>		<b>\$111,496.71</b>
<b>700 <u>Property</u></b>				
758 Capitalized Technology Software - Original	7,961.37	7,961.36		15,922.73
768 Capitalized Technology Software - Replacement	16,757.00	28,570.50		45,327.50
<b>Total Property</b>	<b>\$24,718.37</b>	<b>\$36,531.86</b>		<b>\$61,250.23</b>
<b>800 <u>Other Objects</u></b>				
810 Dues and Fees	486.50	486.50		973.00
<b>Total Other Objects</b>	<b>\$486.50</b>	<b>\$486.50</b>		<b>\$973.00</b>
<b>Total 2200 Support Services – Instructional Staff</b>	<b>\$563,167.39</b>	<b>\$522,315.28</b>	<b>\$4,333.14</b>	<b>\$1,089,815.81</b>

LEA : 129546003     Pine Grove Area SD

Printed 12/3/2018 4:21:36 PM

General Fund (10)

2220 Technology Support Services	Elementary	Secondary	Federal	Total
100 <u>Personnel Services – Salaries</u>				
100 Personnel Services – Salaries	51,629.45	51,629.44		103,258.89
<b>Total Personnel Services – Salaries</b>	<b>\$51,629.45</b>	<b>\$51,629.44</b>		<b>\$103,258.89</b>
200 <u>Personnel Services – Employee Benefits</u>				
210 Group Insurance – Contracted Provider	2,286.02	2,286.00		4,572.02
220 Social Security Contributions	3,938.30	3,938.29		7,876.59
230 PSERS Retirement Contributions	16,815.78	16,815.77		33,631.55
250 Unemployment Compensation	55.43	55.43		110.86
260 Workers' Compensation	433.79	433.78		867.57
<b>Total Personnel Services – Employee Benefits</b>	<b>\$23,529.32</b>	<b>\$23,529.27</b>		<b>\$47,058.59</b>
300 <u>Purchased Professional and Technical Services</u>				
340 Technical Services	33,973.50	33,973.50		67,947.00
<b>Total Purchased Professional and Technical Services</b>	<b>\$33,973.50</b>	<b>\$33,973.50</b>		<b>\$67,947.00</b>
400 <u>Purchased Property Services</u>				
430 Repairs and Maintenance Services	5,576.85	5,902.98		11,479.83
<b>Total Purchased Property Services</b>	<b>\$5,576.85</b>	<b>\$5,902.98</b>		<b>\$11,479.83</b>
500 <u>Other Purchased Services</u>				
530 Communications	15,641.15	15,641.14		31,282.29
<b>Total Other Purchased Services</b>	<b>\$15,641.15</b>	<b>\$15,641.14</b>		<b>\$31,282.29</b>
600 <u>Supplies</u>				
610 General Supplies	48,133.82	47,563.81		95,697.63
<b>Total Supplies</b>	<b>\$48,133.82</b>	<b>\$47,563.81</b>		<b>\$95,697.63</b>
700 <u>Property</u>				
758 Capitalized Technology Software - Original	7,961.37	7,961.36		15,922.73
768 Capitalized Technology Software - Replacement	16,757.00	28,570.50		45,327.50
<b>Total Property</b>	<b>\$24,718.37</b>	<b>\$36,531.86</b>		<b>\$61,250.23</b>
<b>Total 2220 Technology Support Services</b>	<b>\$203,202.46</b>	<b>\$214,772.00</b>		<b>\$417,974.46</b>

LEA : 129546003     Pine Grove Area SD

Printed 12/3/2018 4:21:36 PM

General Fund (10)				
2250 School Library Services	<u>Elementary</u>	<u>Secondary</u>	<u>Federal</u>	<u>Total</u>
100 <u>Personnel Services – Salaries</u>				
100 Personnel Services – Salaries	69,605.50	23,070.50	567.00	93,243.00
<b>Total Personnel Services – Salaries</b>	<b>\$69,605.50</b>	<b>\$23,070.50</b>	<b>\$567.00</b>	<b>\$93,243.00</b>
200 <u>Personnel Services – Employee Benefits</u>				
210 Group Insurance – Contracted Provider	17,861.88	10,174.13		28,036.01
220 Social Security Contributions	5,080.81	1,597.08	43.37	6,721.26
230 PSERS Retirement Contributions	22,670.45	7,514.02	184.67	30,369.14
250 Unemployment Compensation	45.77	15.49		61.26
260 Workers' Compensation	584.63	193.82	4.76	783.21
<b>Total Personnel Services – Employee Benefits</b>	<b>\$46,243.54</b>	<b>\$19,494.54</b>	<b>\$232.80</b>	<b>\$65,970.88</b>
500 <u>Other Purchased Services</u>				
550 Printing and Binding	199.85	199.85		399.70
<b>Total Other Purchased Services</b>	<b>\$199.85</b>	<b>\$199.85</b>		<b>\$399.70</b>
600 <u>Supplies</u>				
610 General Supplies	1,295.21	5,373.33		6,668.54
640 Books and Periodicals	1,490.74	495.75		1,986.49
<b>Total Supplies</b>	<b>\$2,785.95</b>	<b>\$5,869.08</b>		<b>\$8,655.03</b>
<b>Total 2250 School Library Services</b>	<b>\$118,834.84</b>	<b>\$48,633.97</b>	<b>\$799.80</b>	<b>\$168,268.61</b>

LEA : 129546003     Pine Grove Area SD

Printed 12/3/2018 4:21:36 PM

General Fund (10)

2260 Instruction and Curriculum Development Services	<u>Elementary</u>	<u>Secondary</u>	<u>Federal</u>	<u>Total</u>
100 <u>Personnel Services – Salaries</u>				
100 Personnel Services – Salaries	105,798.40	106,298.40		212,096.80
<b>Total Personnel Services – Salaries</b>	<b>\$105,798.40</b>	<b>\$106,298.40</b>		<b>\$212,096.80</b>
200 <u>Personnel Services – Employee Benefits</u>				
210 Group Insurance – Contracted Provider	26,000.19	26,000.18		52,000.37
220 Social Security Contributions	7,852.61	7,890.84		15,743.45
230 PSERS Retirement Contributions	34,458.61	34,621.45		69,080.06
250 Unemployment Compensation	46.52	46.50		93.02
260 Workers' Compensation	888.65	892.85		1,781.50
<b>Total Personnel Services – Employee Benefits</b>	<b>\$69,246.58</b>	<b>\$69,451.82</b>		<b>\$138,698.40</b>
300 <u>Purchased Professional and Technical Services</u>				
324 Professional Educational Services – Employee Training and Development Services	1,168.38	1,168.38		2,336.76
330 Other Professional Services	5,272.50	5,272.50		10,545.00
<b>Total Purchased Professional and Technical Services</b>	<b>\$6,440.88</b>	<b>\$6,440.88</b>		<b>\$12,881.76</b>
400 <u>Purchased Property Services</u>				
440 Rentals	2,964.25	2,964.24		5,928.49
<b>Total Purchased Property Services</b>	<b>\$2,964.25</b>	<b>\$2,964.24</b>		<b>\$5,928.49</b>
500 <u>Other Purchased Services</u>				
530 Communications	1,106.76	1,106.76		2,213.52
580 Travel	1,678.47	1,678.46		3,356.93
<b>Total Other Purchased Services</b>	<b>\$2,785.23</b>	<b>\$2,785.22</b>		<b>\$5,570.45</b>
600 <u>Supplies</u>				
610 General Supplies	564.47	2,537.71		3,102.18
630 Food		107.83		107.83
<b>Total Supplies</b>	<b>\$564.47</b>	<b>\$2,645.54</b>		<b>\$3,210.01</b>
800 <u>Other Objects</u>				
810 Dues and Fees	486.50	486.50		973.00
<b>Total Other Objects</b>	<b>\$486.50</b>	<b>\$486.50</b>		<b>\$973.00</b>
<b>Total 2260 Instruction and Curriculum Development Services</b>	<b>\$188,286.31</b>	<b>\$191,072.60</b>		<b>\$379,358.91</b>

LEA : 129546003     Pine Grove Area SD

Printed 12/3/2018 4:21:36 PM

General Fund (10)

2270 Instructional Staff Professional Development Services	<u>Elementary</u>	<u>Secondary</u>	<u>Federal</u>	<u>Total</u>
200 <u>Personnel Services – Employee Benefits</u>				
240 Tuition Reimbursement	27,638.81	61,724.47		89,363.28
<b>Total Personnel Services – Employee Benefits</b>	<b>\$27,638.81</b>	<b>\$61,724.47</b>		<b>\$89,363.28</b>
300 <u>Purchased Professional and Technical Services</u>				
324 Professional Educational Services – Employee Training and Development Services	4,931.60	1,525.60		6,457.20
<b>Total Purchased Professional and Technical Services</b>	<b>\$4,931.60</b>	<b>\$1,525.60</b>		<b>\$6,457.20</b>
500 <u>Other Purchased Services</u>				
580 Travel	738.97	2,619.62	3,533.34	6,891.93
<b>Total Other Purchased Services</b>	<b>\$738.97</b>	<b>\$2,619.62</b>	<b>\$3,533.34</b>	<b>\$6,891.93</b>
600 <u>Supplies</u>				
610 General Supplies	1,642.00	1,642.00		3,284.00
630 Food	325.02	325.02		650.04
<b>Total Supplies</b>	<b>\$1,967.02</b>	<b>\$1,967.02</b>		<b>\$3,934.04</b>
<b>Total 2270 Instructional Staff Professional Development Services</b>	<b>\$35,276.40</b>	<b>\$67,836.71</b>	<b>\$3,533.34</b>	<b>\$106,646.45</b>

LEA : 129546003     Pine Grove Area SD

Printed 12/3/2018 4:21:36 PM

General Fund (10)

2290 Other Instructional Staff Services	<u>Elementary</u>	<u>Secondary</u>	<u>Federal</u>	<u>Total</u>
100 <u>Personnel Services – Salaries</u>				
100 Personnel Services – Salaries	12,435.62			12,435.62
<b>Total Personnel Services – Salaries</b>	<b>\$12,435.62</b>			<b>\$12,435.62</b>
200 <u>Personnel Services – Employee Benefits</u>				
220 Social Security Contributions	951.34			951.34
230 PSERS Retirement Contributions	4,050.31			4,050.31
250 Unemployment Compensation	25.65			25.65
260 Workers' Compensation	104.46			104.46
<b>Total Personnel Services – Employee Benefits</b>	<b>\$5,131.76</b>			<b>\$5,131.76</b>
<b>Total 2290 Other Instructional Staff Services</b>	<b>\$17,567.38</b>			<b>\$17,567.38</b>

LEA : 129546003     Pine Grove Area SD

Printed 12/3/2018 4:21:36 PM

<b>General Fund (10)</b>				
<b>2300 Support Services – Administration</b>	<b><u>Elementary</u></b>	<b><u>Secondary</u></b>	<b><u>Federal</u></b>	<b><u>Total</u></b>
<b>100 <u>Personnel Services – Salaries</u></b>				
100 Personnel Services – Salaries	184,958.40	197,325.60		568,014.46
<b>Total Personnel Services – Salaries</b>	<b>\$184,958.40</b>	<b>\$197,325.60</b>		<b>\$568,014.46</b>
<b>200 <u>Personnel Services – Employee Benefits</u></b>				
210 Group Insurance – Contracted Provider	33,461.83	48,867.91		118,424.79
220 Social Security Contributions	13,860.72	14,732.86		42,480.71
230 PSERS Retirement Contributions	60,241.26	64,269.24		183,676.83
250 Unemployment Compensation	89.13	92.96		244.09
260 Workers' Compensation	1,553.65	1,657.31		4,771.10
<b>Total Personnel Services – Employee Benefits</b>	<b>\$109,206.59</b>	<b>\$129,620.28</b>		<b>\$349,597.52</b>
<b>300 <u>Purchased Professional and Technical Services</u></b>				
310 Official / Administrative Services				440.17
324 Professional Educational Services – Employee Training and Development Services				2,137.91
330 Other Professional Services				78,002.94
340 Technical Services				1,119.20
<b>Total Purchased Professional and Technical Services</b>				<b>\$81,700.22</b>
<b>400 <u>Purchased Property Services</u></b>				
430 Repairs and Maintenance Services		410.00		410.00
<b>Total Purchased Property Services</b>		<b>\$410.00</b>		<b>\$410.00</b>
<b>500 <u>Other Purchased Services</u></b>				
520 Insurance – General				11,657.00
530 Communications				10,185.56
549 Other Advertising/Public Relations				7,869.70
550 Printing and Binding				300.00
580 Travel	410.43	1,504.68		3,084.07
599 Other Miscellaneous Purchased Services				1,054.70
<b>Total Other Purchased Services</b>	<b>\$410.43</b>	<b>\$1,504.68</b>		<b>\$34,151.03</b>
<b>600 <u>Supplies</u></b>				
610 General Supplies	8,684.66	1,243.50		24,081.57
630 Food		117.47		1,314.35
640 Books and Periodicals				442.92
<b>Total Supplies</b>	<b>\$8,684.66</b>	<b>\$1,360.97</b>		<b>\$25,838.84</b>
<b>800 <u>Other Objects</u></b>				
810 Dues and Fees	892.50	892.50		4,350.10
<b>Total Other Objects</b>	<b>\$892.50</b>	<b>\$892.50</b>		<b>\$4,350.10</b>
<b>Total 2300 Support Services – Administration</b>	<b>\$304,152.58</b>	<b>\$331,114.03</b>		<b>\$1,064,062.17</b>

LEA : 129546003     Pine Grove Area SD

Printed 12/3/2018 4:21:36 PM

<b>General Fund (10)</b>				
<b>2310 Board Services</b>	<b><u>Elementary</u></b>	<b><u>Secondary</u></b>	<b><u>Federal</u></b>	<b><u>Total</u></b>
<b>300 <u>Purchased Professional and Technical Services</u></b>				
324 Professional Educational Services – Employee Training and Development Services				782.00
330 Other Professional Services				9,306.80
340 Technical Services				1,119.20
<b>Total Purchased Professional and Technical Services</b>				<b>\$11,208.00</b>
<b>500 <u>Other Purchased Services</u></b>				
520 Insurance – General				11,657.00
549 Other Advertising/Public Relations				5,649.70
550 Printing and Binding				300.00
599 Other Miscellaneous Purchased Services				1,054.70
<b>Total Other Purchased Services</b>				<b>\$18,661.40</b>
<b>600 <u>Supplies</u></b>				
610 General Supplies				409.38
630 Food				91.92
<b>Total Supplies</b>				<b>\$501.30</b>
<b>800 <u>Other Objects</u></b>				
810 Dues and Fees				840.10
<b>Total Other Objects</b>				<b>\$840.10</b>
<b>Total 2310 Board Services</b>				<b>\$31,210.80</b>



LEA : 129546003     Pine Grove Area SD

Printed 12/3/2018 4:21:36 PM

General Fund (10)

2330 Tax Assessment and Collection Services	<u>Elementary</u>	<u>Secondary</u>	<u>Federal</u>	<u>Total</u>
100 <u>Personnel Services – Salaries</u>				
100 Personnel Services – Salaries				4,071.46
Total Personnel Services – Salaries				\$4,071.46
200 <u>Personnel Services – Employee Benefits</u>				
220 Social Security Contributions				311.48
260 Workers’ Compensation				34.20
Total Personnel Services – Employee Benefits				\$345.68
300 <u>Purchased Professional and Technical Services</u>				
310 Official / Administrative Services				440.17
Total Purchased Professional and Technical Services				\$440.17
500 <u>Other Purchased Services</u>				
530 Communications				10,185.56
Total Other Purchased Services				\$10,185.56
Total 2330 Tax Assessment and Collection Services				\$15,042.87

LEA : 129546003     Pine Grove Area SD

Printed 12/3/2018 4:21:36 PM

General Fund (10)

2350 Legal and Accounting Services	<u>Elementary</u>	<u>Secondary</u>	<u>Federal</u>	<u>Total</u>
300 <u>Purchased Professional and Technical Services</u>				
330 Other Professional Services				68,696.14
Total Purchased Professional and Technical Services				\$68,696.14
Total 2350 Legal and Accounting Services				\$68,696.14

LEA : 129546003     Pine Grove Area SD

Printed 12/3/2018 4:21:36 PM

General Fund (10)				
2360 Office of the Superintendent / Executive Director Services	<u>Elementary</u>	<u>Secondary</u>	<u>Federal</u>	<u>Total</u>
100 <u>Personnel Services – Salaries</u>				
100 Personnel Services – Salaries				181,659.00
Total Personnel Services – Salaries				\$181,659.00
200 <u>Personnel Services – Employee Benefits</u>				
210 Group Insurance – Contracted Provider				36,095.05
220 Social Security Contributions				13,575.65
230 PSERS Retirement Contributions				59,166.33
250 Unemployment Compensation				62.00
260 Workers' Compensation				1,525.94
Total Personnel Services – Employee Benefits				\$110,424.97
300 <u>Purchased Professional and Technical Services</u>				
324 Professional Educational Services – Employee Training and Development Services				1,355.91
Total Purchased Professional and Technical Services				\$1,355.91
500 <u>Other Purchased Services</u>				
549 Other Advertising/Public Relations				2,220.00
580 Travel				1,168.96
Total Other Purchased Services				\$3,388.96
600 <u>Supplies</u>				
610 General Supplies				10,827.01
630 Food				1,104.96
640 Books and Periodicals				442.92
Total Supplies				\$12,374.89
800 <u>Other Objects</u>				
810 Dues and Fees				1,725.00
Total Other Objects				\$1,725.00
Total 2360 Office of the Superintendent / Executive Director Services				\$310,928.73

LEA : 129546003     Pine Grove Area SD

Printed 12/3/2018 4:21:36 PM

General Fund (10)				
2380 Office of the Principal Services	<u>Elementary</u>	<u>Secondary</u>	<u>Federal</u>	<u>Total</u>
100 <u>Personnel Services – Salaries</u>				
100 Personnel Services – Salaries	184,958.40	197,325.60		382,284.00
<b>Total Personnel Services – Salaries</b>	<b>\$184,958.40</b>	<b>\$197,325.60</b>		<b>\$382,284.00</b>
200 <u>Personnel Services – Employee Benefits</u>				
210 Group Insurance – Contracted Provider	33,461.83	48,867.91		82,329.74
220 Social Security Contributions	13,860.72	14,732.86		28,593.58
230 PSERS Retirement Contributions	60,241.26	64,269.24		124,510.50
250 Unemployment Compensation	89.13	92.96		182.09
260 Workers' Compensation	1,553.65	1,657.31		3,210.96
<b>Total Personnel Services – Employee Benefits</b>	<b>\$109,206.59</b>	<b>\$129,620.28</b>		<b>\$238,826.87</b>
400 <u>Purchased Property Services</u>				
430 Repairs and Maintenance Services		410.00		410.00
<b>Total Purchased Property Services</b>		<b>\$410.00</b>		<b>\$410.00</b>
500 <u>Other Purchased Services</u>				
580 Travel	410.43	1,504.68		1,915.11
<b>Total Other Purchased Services</b>	<b>\$410.43</b>	<b>\$1,504.68</b>		<b>\$1,915.11</b>
600 <u>Supplies</u>				
610 General Supplies	8,684.66	1,243.50		9,928.16
630 Food		117.47		117.47
<b>Total Supplies</b>	<b>\$8,684.66</b>	<b>\$1,360.97</b>		<b>\$10,045.63</b>
800 <u>Other Objects</u>				
810 Dues and Fees	892.50	892.50		1,785.00
<b>Total Other Objects</b>	<b>\$892.50</b>	<b>\$892.50</b>		<b>\$1,785.00</b>
<b>Total 2380 Office of the Principal Services</b>	<b>\$304,152.58</b>	<b>\$331,114.03</b>		<b>\$635,266.61</b>

LEA : 129546003     Pine Grove Area SD

Printed 12/3/2018 4:21:36 PM

General Fund (10)

2390 Other Administration Services	<u>Elementary</u>	<u>Secondary</u>	<u>Federal</u>	<u>Total</u>
600 <u>Supplies</u>				
610 General Supplies				2,917.02
Total Supplies				\$2,917.02
Total 2390 Other Administration Services				\$2,917.02

LEA : 129546003     Pine Grove Area SD

Printed 12/3/2018 4:21:36 PM

General Fund (10)				
2400 Support Services – Pupil Health	<u>Elementary</u>	<u>Secondary</u>	<u>Federal</u>	<u>Total</u>
100 <u>Personnel Services – Salaries</u>				
100 Personnel Services – Salaries				134,336.45
Total Personnel Services – Salaries				\$134,336.45
200 <u>Personnel Services – Employee Benefits</u>				
210 Group Insurance – Contracted Provider				52,918.28
220 Social Security Contributions				9,563.26
230 PSERS Retirement Contributions				43,545.50
250 Unemployment Compensation				101.07
260 Workers' Compensation				1,128.42
Total Personnel Services – Employee Benefits				\$107,256.53
300 <u>Purchased Professional and Technical Services</u>				
330 Other Professional Services				1,674.00
Total Purchased Professional and Technical Services				\$1,674.00
400 <u>Purchased Property Services</u>				
430 Repairs and Maintenance Services				631.04
Total Purchased Property Services				\$631.04
500 <u>Other Purchased Services</u>				
580 Travel				41.42
Total Other Purchased Services				\$41.42
600 <u>Supplies</u>				
610 General Supplies				4,114.05
Total Supplies				\$4,114.05
Total 2400 Support Services – Pupil Health				\$248,053.49

LEA : 129546003     Pine Grove Area SD

Printed 12/3/2018 4:21:36 PM

General Fund (10)

2420 Medical Services

<u>Elementary</u>	<u>Secondary</u>	<u>Federal</u>	<u>Total</u>
-------------------	------------------	----------------	--------------

300 Purchased Professional and Technical Services

330 Other Professional Services			1,530.00
---------------------------------	--	--	----------

<b>Total Purchased Professional and Technical Services</b>			<b>\$1,530.00</b>
--	--	--	-------------------

<b>Total 2420 Medical Services</b>			<b>\$1,530.00</b>
------------------------------------	--	--	-------------------

LEA : 129546003     Pine Grove Area SD

Printed 12/3/2018 4:21:36 PM

General Fund (10)

2430 Dental Services

<u>Elementary</u>	<u>Secondary</u>	<u>Federal</u>	<u>Total</u>
-------------------	------------------	----------------	--------------

300 Purchased Professional and Technical Services

330 Other Professional Services			144.00
---------------------------------	--	--	--------

<b>Total Purchased Professional and Technical Services</b>			<b>\$144.00</b>
--	--	--	-----------------

<b>Total 2430 Dental Services</b>			<b>\$144.00</b>
-----------------------------------	--	--	-----------------



LEA : 129546003     Pine Grove Area SD

Printed 12/3/2018 4:21:36 PM

General Fund (10)				
2440 Nursing Services	<u>Elementary</u>	<u>Secondary</u>	<u>Federal</u>	<u>Total</u>
100 <u>Personnel Services – Salaries</u>				
100 Personnel Services – Salaries				134,336.45
Total Personnel Services – Salaries				\$134,336.45
200 <u>Personnel Services – Employee Benefits</u>				
210 Group Insurance – Contracted Provider				52,918.28
220 Social Security Contributions				9,563.26
230 PSERS Retirement Contributions				43,545.50
250 Unemployment Compensation				101.07
260 Workers' Compensation				1,128.42
Total Personnel Services – Employee Benefits				\$107,256.53
400 <u>Purchased Property Services</u>				
430 Repairs and Maintenance Services				631.04
Total Purchased Property Services				\$631.04
500 <u>Other Purchased Services</u>				
580 Travel				41.42
Total Other Purchased Services				\$41.42
600 <u>Supplies</u>				
610 General Supplies				4,114.05
Total Supplies				\$4,114.05
Total 2440 Nursing Services				\$246,379.49

LEA : 129546003     Pine Grove Area SD

Printed 12/3/2018 4:21:36 PM

General Fund (10)				
2500 Support Services – Business	<u>Elementary</u>	<u>Secondary</u>	<u>Federal</u>	<u>Total</u>
100 <u>Personnel Services – Salaries</u>				
100 Personnel Services – Salaries				178,427.88
Total Personnel Services – Salaries				\$178,427.88
200 <u>Personnel Services – Employee Benefits</u>				
210 Group Insurance – Contracted Provider				59,218.69
220 Social Security Contributions				13,202.78
230 PSERS Retirement Contributions				57,992.82
250 Unemployment Compensation				147.46
260 Workers' Compensation				1,498.74
Total Personnel Services – Employee Benefits				\$132,060.49
300 <u>Purchased Professional and Technical Services</u>				
324 Professional Educational Services – Employee Training and Development Services				32,997.66
340 Technical Services				3,345.98
Total Purchased Professional and Technical Services				\$36,343.64
400 <u>Purchased Property Services</u>				
440 Rentals				696.80
Total Purchased Property Services				\$696.80
500 <u>Other Purchased Services</u>				
530 Communications				2,413.35
580 Travel				390.72
Total Other Purchased Services				\$2,804.07
600 <u>Supplies</u>				
610 General Supplies				2,677.54
Total Supplies				\$2,677.54
800 <u>Other Objects</u>				
810 Dues and Fees				12,997.44
Total Other Objects				\$12,997.44
Total 2500 Support Services – Business				\$366,007.86

LEA : 129546003     Pine Grove Area SD

Printed 12/3/2018 4:21:36 PM

General Fund (10)				
2510 Fiscal Services	<u>Elementary</u>	<u>Secondary</u>	<u>Federal</u>	<u>Total</u>
100 <u>Personnel Services – Salaries</u>				
100 Personnel Services – Salaries				178,427.88
Total Personnel Services – Salaries				\$178,427.88
200 <u>Personnel Services – Employee Benefits</u>				
210 Group Insurance – Contracted Provider				59,218.69
220 Social Security Contributions				13,202.78
230 PSERS Retirement Contributions				57,992.82
250 Unemployment Compensation				147.46
260 Workers' Compensation				1,498.74
Total Personnel Services – Employee Benefits				\$132,060.49
300 <u>Purchased Professional and Technical Services</u>				
324 Professional Educational Services – Employee Training and Development Services				32,997.66
340 Technical Services				3,345.98
Total Purchased Professional and Technical Services				\$36,343.64
400 <u>Purchased Property Services</u>				
440 Rentals				696.80
Total Purchased Property Services				\$696.80
500 <u>Other Purchased Services</u>				
530 Communications				2,413.35
580 Travel				390.72
Total Other Purchased Services				\$2,804.07
600 <u>Supplies</u>				
610 General Supplies				2,677.54
Total Supplies				\$2,677.54
800 <u>Other Objects</u>				
810 Dues and Fees				12,997.44
Total Other Objects				\$12,997.44
Total 2510 Fiscal Services				\$366,007.86

LEA : 129546003     Pine Grove Area SD

Printed 12/3/2018 4:21:36 PM

General Fund (10)				
2511 Supervision of Fiscal Services - Head of Component	<u>Elementary</u>	<u>Secondary</u>	<u>Federal</u>	<u>Total</u>
100 <u>Personnel Services – Salaries</u>				
100 Personnel Services – Salaries				79,646.88
Total Personnel Services – Salaries				\$79,646.88
200 <u>Personnel Services – Employee Benefits</u>				
210 Group Insurance – Contracted Provider				20,546.33
220 Social Security Contributions				5,887.02
230 PSERS Retirement Contributions				25,940.99
250 Unemployment Compensation				36.33
260 Workers' Compensation				668.98
Total Personnel Services – Employee Benefits				\$53,079.65
300 <u>Purchased Professional and Technical Services</u>				
324 Professional Educational Services – Employee Training and Development Services				8,853.69
340 Technical Services				3,345.98
Total Purchased Professional and Technical Services				\$12,199.67
400 <u>Purchased Property Services</u>				
440 Rentals				696.80
Total Purchased Property Services				\$696.80
500 <u>Other Purchased Services</u>				
530 Communications				2,413.35
580 Travel				390.72
Total Other Purchased Services				\$2,804.07
600 <u>Supplies</u>				
610 General Supplies				2,677.54
Total Supplies				\$2,677.54
800 <u>Other Objects</u>				
810 Dues and Fees				213.00
Total Other Objects				\$213.00
Total 2511 Supervision of Fiscal Services - Head of Component				\$151,317.61

LEA : 129546003     Pine Grove Area SD

Printed 12/3/2018 4:21:36 PM

General Fund (10)

2513 Receiving and Disbursing Funds Services

Elementary                      Secondary                      Federal                      Total

100 <u>Personnel Services – Salaries</u>				
100 Personnel Services – Salaries				17,369.80
<b>Total Personnel Services – Salaries</b>				<b>\$17,369.80</b>
200 <u>Personnel Services – Employee Benefits</u>				
210 Group Insurance – Contracted Provider				9,305.24
220 Social Security Contributions				1,270.54
230 PSERS Retirement Contributions				5,535.99
250 Unemployment Compensation				49.17
260 Workers' Compensation				145.94
<b>Total Personnel Services – Employee Benefits</b>				<b>\$16,306.88</b>
800 <u>Other Objects</u>				
810 Dues and Fees				12,784.44
<b>Total Other Objects</b>				<b>\$12,784.44</b>
<b>Total 2513 Receiving and Disbursing Funds Services</b>				<b>\$46,461.12</b>

LEA : 129546003     Pine Grove Area SD

Printed 12/3/2018 4:21:36 PM

General Fund (10)

2514 Payroll Services

<u>Elementary</u>	<u>Secondary</u>	<u>Federal</u>	<u>Total</u>
-------------------	------------------	----------------	--------------

300 Purchased Professional and Technical Services

324 Professional Educational Services – Employee Training and Development Services			24,143.97
--	--	--	-----------

<b>Total Purchased Professional and Technical Services</b>			<b>\$24,143.97</b>
<b>Total 2514 Payroll Services</b>			<b>\$24,143.97</b>

LEA : 129546003     Pine Grove Area SD

Printed 12/3/2018 4:21:36 PM

General Fund (10)

2515 Financial Accounting Services	<u>Elementary</u>	<u>Secondary</u>	<u>Federal</u>	<u>Total</u>
100 <u>Personnel Services – Salaries</u>				
100 Personnel Services – Salaries				81,411.20
Total Personnel Services – Salaries				\$81,411.20
200 <u>Personnel Services – Employee Benefits</u>				
210 Group Insurance – Contracted Provider				29,367.12
220 Social Security Contributions				6,045.22
230 PSERS Retirement Contributions				26,515.84
250 Unemployment Compensation				61.96
260 Workers' Compensation				683.82
Total Personnel Services – Employee Benefits				\$62,673.96
Total 2515 Financial Accounting Services				\$144,085.16

LEA : 129546003     Pine Grove Area SD

Printed 12/3/2018 4:21:36 PM

General Fund (10)				
2600 Operation and Maintenance of Plant Services	<u>Elementary</u>	<u>Secondary</u>	<u>Federal</u>	<u>Total</u>
100 <u>Personnel Services – Salaries</u>				
100 Personnel Services – Salaries				821,143.60
<b>Total Personnel Services – Salaries</b>				<b>\$821,143.60</b>
200 <u>Personnel Services – Employee Benefits</u>				
210 Group Insurance – Contracted Provider				211,627.22
220 Social Security Contributions				61,355.29
230 PSERS Retirement Contributions				264,935.64
250 Unemployment Compensation				840.76
260 Workers' Compensation				6,887.32
<b>Total Personnel Services – Employee Benefits</b>				<b>\$545,646.23</b>
300 <u>Purchased Professional and Technical Services</u>				
324 Professional Educational Services – Employee Training and Development Services				220.00
340 Technical Services				10,404.00
<b>Total Purchased Professional and Technical Services</b>				<b>\$10,624.00</b>
400 <u>Purchased Property Services</u>				
410 Cleaning Services				13,610.64
420 Utility Services				179,777.87
430 Repairs and Maintenance Services				38,651.74
440 Rentals				943.50
460 Extermination Services				1,808.73
<b>Total Purchased Property Services</b>				<b>\$234,792.48</b>
500 <u>Other Purchased Services</u>				
522 Automotive Liability Insurance				6,508.00
523 General Property and Liability Insurance				57,062.00
529 Other Insurance				27,725.00
530 Communications				17,591.94
580 Travel				56.79
<b>Total Other Purchased Services</b>				<b>\$108,943.73</b>
600 <u>Supplies</u>				
610 General Supplies	65,354.69	65,354.68		130,709.37
620 Energy				26,605.10
<b>Total Supplies</b>	<b>\$65,354.69</b>	<b>\$65,354.68</b>		<b>\$157,314.47</b>
800 <u>Other Objects</u>				
810 Dues and Fees				195.00
<b>Total Other Objects</b>				<b>\$195.00</b>
<b>Total 2600 Operation and Maintenance of Plant Services</b>	<b>\$65,354.69</b>	<b>\$65,354.68</b>		<b>\$1,878,659.51</b>



LEA : 129546003     Pine Grove Area SD

Printed 12/3/2018 4:21:36 PM

General Fund (10)				
2610 Supervision of Operation and Maintenance of Plant Services	<u>Elementary</u>	<u>Secondary</u>	<u>Federal</u>	<u>Total</u>
100 <u>Personnel Services – Salaries</u>				
100 Personnel Services – Salaries				107,466.00
Total Personnel Services – Salaries				\$107,466.00
200 <u>Personnel Services – Employee Benefits</u>				
210 Group Insurance – Contracted Provider				28,668.94
220 Social Security Contributions				7,990.85
230 PSERS Retirement Contributions				35,001.70
250 Unemployment Compensation				61.99
260 Workers' Compensation				902.72
Total Personnel Services – Employee Benefits				\$72,626.20
600 <u>Supplies</u>				
610 General Supplies	1,192.42	1,192.41		2,384.83
Total Supplies	\$1,192.42	\$1,192.41		\$2,384.83
Total 2610 Supervision of Operation and Maintenance of Plant Services	\$1,192.42	\$1,192.41		\$182,477.03

LEA : 129546003     Pine Grove Area SD

Printed 12/3/2018 4:21:36 PM

General Fund (10)				
2611 Supervision of Operation and Maintenance of Plant Services – Head of Component	<u>Elementary</u>	<u>Secondary</u>	<u>Federal</u>	<u>Total</u>
100 <u>Personnel Services – Salaries</u>				
100 Personnel Services – Salaries				107,466.00
Total Personnel Services – Salaries				\$107,466.00
200 <u>Personnel Services – Employee Benefits</u>				
210 Group Insurance – Contracted Provider				28,668.94
220 Social Security Contributions				7,990.85
230 PSERS Retirement Contributions				35,001.70
250 Unemployment Compensation				61.99
260 Workers' Compensation				902.72
Total Personnel Services – Employee Benefits				\$72,626.20
600 <u>Supplies</u>				
610 General Supplies	1,192.42	1,192.41		2,384.83
Total Supplies	\$1,192.42	\$1,192.41		\$2,384.83
Total 2611 Supervision of Operation and Maintenance of Plant Services – Head of Component	\$1,192.42	\$1,192.41		\$182,477.03

LEA : 129546003     Pine Grove Area SD

Printed 12/3/2018 4:21:36 PM

General Fund (10)				
2620 Operation of Buildings Services	<u>Elementary</u>	<u>Secondary</u>	<u>Federal</u>	<u>Total</u>
100 <u>Personnel Services – Salaries</u>				
100 Personnel Services – Salaries				611,364.35
Total Personnel Services – Salaries				\$611,364.35
200 <u>Personnel Services – Employee Benefits</u>				
210 Group Insurance – Contracted Provider				167,341.62
220 Social Security Contributions				45,624.77
230 PSERS Retirement Contributions				196,610.25
250 Unemployment Compensation				720.56
260 Workers' Compensation				5,125.31
Total Personnel Services – Employee Benefits				\$415,422.51
300 <u>Purchased Professional and Technical Services</u>				
340 Technical Services				7,474.00
Total Purchased Professional and Technical Services				\$7,474.00
400 <u>Purchased Property Services</u>				
410 Cleaning Services				13,610.64
420 Utility Services				179,777.87
430 Repairs and Maintenance Services				27,308.41
440 Rentals				943.50
460 Extermination Services				1,808.73
Total Purchased Property Services				\$223,449.15
500 <u>Other Purchased Services</u>				
523 General Property and Liability Insurance				57,062.00
529 Other Insurance				27,725.00
530 Communications				17,591.94
Total Other Purchased Services				\$102,378.94
600 <u>Supplies</u>				
610 General Supplies	56,292.27	56,292.26		112,584.53
620 Energy				20,793.45
Total Supplies	\$56,292.27	\$56,292.26		\$133,377.98
Total 2620 Operation of Buildings Services	\$56,292.27	\$56,292.26		\$1,493,466.93

LEA : 129546003     Pine Grove Area SD

Printed 12/3/2018 4:21:36 PM

General Fund (10)				
2630 Care and Upkeep of Grounds Services	<u>Elementary</u>	<u>Secondary</u>	<u>Federal</u>	<u>Total</u>
100 <u>Personnel Services – Salaries</u>				
100 Personnel Services – Salaries				102,313.25
Total Personnel Services – Salaries				\$102,313.25
200 <u>Personnel Services – Employee Benefits</u>				
210 Group Insurance – Contracted Provider				15,616.66
220 Social Security Contributions				7,739.67
230 PSERS Retirement Contributions				33,323.69
250 Unemployment Compensation				58.21
260 Workers' Compensation				859.29
Total Personnel Services – Employee Benefits				\$57,597.52
300 <u>Purchased Professional and Technical Services</u>				
324 Professional Educational Services – Employee Training and Development Services				220.00
340 Technical Services				2,930.00
Total Purchased Professional and Technical Services				\$3,150.00
400 <u>Purchased Property Services</u>				
430 Repairs and Maintenance Services				173.32
Total Purchased Property Services				\$173.32
500 <u>Other Purchased Services</u>				
580 Travel				56.79
Total Other Purchased Services				\$56.79
600 <u>Supplies</u>				
610 General Supplies	8,775.58	8,775.58		17,551.16
620 Energy				1,321.81
Total Supplies				\$18,872.97
800 <u>Other Objects</u>				
810 Dues and Fees				195.00
Total Other Objects				\$195.00
Total 2630 Care and Upkeep of Grounds Services	\$8,775.58	\$8,775.58		\$182,358.85

LEA : 129546003     Pine Grove Area SD

Printed 12/3/2018 4:21:36 PM

General Fund (10)				
2650 Vehicle Operation and Maintenance Services (Other Than Student Transportation Vehicles)	<u>Elementary</u>	<u>Secondary</u>	<u>Federal</u>	<u>Total</u>
400 <u>Purchased Property Services</u>				
430 Repairs and Maintenance Services				2,656.96
Total Purchased Property Services				\$2,656.96
500 <u>Other Purchased Services</u>				
522 Automotive Liability Insurance				6,508.00
Total Other Purchased Services				\$6,508.00
600 <u>Supplies</u>				
610 General Supplies	(905.58)	(905.57)		(1,811.15)
620 Energy				4,489.84
Total Supplies	(\$905.58)	(\$905.57)		\$2,678.69
Total 2650 Vehicle Operation and Maintenance Services (Other Than Student Transportation Vehicles)	(\$905.58)	(\$905.57)		\$11,843.65

LEA : 129546003     Pine Grove Area SD

Printed 12/3/2018 4:21:36 PM

General Fund (10)

2660 Safety and Security Services	<u>Elementary</u>	<u>Secondary</u>	<u>Federal</u>	<u>Total</u>
400 <u>Purchased Property Services</u>				
430 Repairs and Maintenance Services				8,513.05
Total Purchased Property Services				\$8,513.05
Total 2660 Safety and Security Services				\$8,513.05

LEA : 129546003     Pine Grove Area SD

Printed 12/3/2018 4:21:36 PM

General Fund (10)					
2700 Student Transportation Services		<u>Elementary</u>	<u>Secondary</u>	<u>Federal</u>	<u>Total</u>
100 <u>Personnel Services – Salaries</u>					
100 Personnel Services – Salaries				399.54	47,643.57
Total Personnel Services – Salaries				\$399.54	\$47,643.57
200 <u>Personnel Services – Employee Benefits</u>					
210 Group Insurance – Contracted Provider					11,160.24
220 Social Security Contributions					3,546.99
230 PSERS Retirement Contributions					15,387.49
250 Unemployment Compensation					50.04
260 Workers' Compensation					396.85
Total Personnel Services – Employee Benefits					\$30,541.61
500 <u>Other Purchased Services</u>					
513 Contracted Carriers					1,176,322.71
580 Travel				824.01	832.19
Total Other Purchased Services				\$824.01	\$1,177,154.90
Total 2700 Student Transportation Services				\$1,223.55	\$1,255,340.08

LEA : 129546003     Pine Grove Area SD

Printed 12/3/2018 4:21:36 PM

General Fund (10)				
2720 Vehicle Operation Services				
	<u>Elementary</u>	<u>Secondary</u>	<u>Federal</u>	<u>Total</u>
100 <u>Personnel Services – Salaries</u>				
100 Personnel Services – Salaries			399.54	41,266.59
Total Personnel Services – Salaries			\$399.54	\$41,266.59
200 <u>Personnel Services – Employee Benefits</u>				
210 Group Insurance – Contracted Provider				11,160.24
220 Social Security Contributions				3,059.16
230 PSERS Retirement Contributions				13,310.50
250 Unemployment Compensation				30.29
260 Workers' Compensation				343.27
Total Personnel Services – Employee Benefits				\$27,903.46
500 <u>Other Purchased Services</u>				
513 Contracted Carriers				1,163,232.71
580 Travel			824.01	832.19
Total Other Purchased Services			\$824.01	\$1,164,064.90
Total 2720 Vehicle Operation Services			\$1,223.55	\$1,233,234.95



LEA : 129546003     Pine Grove Area SD

Printed 12/3/2018 4:21:36 PM

General Fund (10)

2730 Monitoring Services

Elementary                      Secondary                      Federal                      Total

100 <u>Personnel Services – Salaries</u>				
100 Personnel Services – Salaries				6,376.98
<b>Total Personnel Services – Salaries</b>				<b>\$6,376.98</b>
200 <u>Personnel Services – Employee Benefits</u>				
220 Social Security Contributions				487.83
230 PSERS Retirement Contributions				2,076.99
250 Unemployment Compensation				19.75
260 Workers' Compensation				53.58
<b>Total Personnel Services – Employee Benefits</b>				<b>\$2,638.15</b>
<b>Total 2730 Monitoring Services</b>				<b>\$9,015.13</b>

LEA : 129546003     Pine Grove Area SD

Printed 12/3/2018 4:21:36 PM

General Fund (10)

2750 Nonpublic Transportation	<u>Elementary</u>	<u>Secondary</u>	<u>Federal</u>	<u>Total</u>
500 <u>Other Purchased Services</u>				
513 Contracted Carriers				13,090.00
Total Other Purchased Services				\$13,090.00
Total 2750 Nonpublic Transportation				\$13,090.00

LEA : 129546003     Pine Grove Area SD

Printed 12/3/2018 4:21:36 PM

General Fund (10)

2800 Support Services – Central	<u>Elementary</u>	<u>Secondary</u>	<u>Federal</u>	<u>Total</u>
100 <u>Personnel Services – Salaries</u>				
100 Personnel Services – Salaries				99,240.73
Total Personnel Services – Salaries				\$99,240.73
200 <u>Personnel Services – Employee Benefits</u>				
220 Social Security Contributions				7,470.88
250 Unemployment Compensation				88.67
260 Workers' Compensation				834.91
280 Other Post-Employment Benefits (OPEB)				2,428.35
Total Personnel Services – Employee Benefits				\$10,822.81
500 <u>Other Purchased Services</u>				
580 Travel				107.00
Total Other Purchased Services				\$107.00
Total 2800 Support Services – Central				\$110,170.54

LEA : 129546003     Pine Grove Area SD

Printed 12/3/2018 4:21:36 PM

General Fund (10)

2830 Staff Services

	<u>Elementary</u>	<u>Secondary</u>	<u>Federal</u>	<u>Total</u>
<b>100 <u>Personnel Services – Salaries</u></b>				
100 Personnel Services – Salaries				99,240.73
<b>Total Personnel Services – Salaries</b>				<b>\$99,240.73</b>
<b>200 <u>Personnel Services – Employee Benefits</u></b>				
220 Social Security Contributions				7,470.88
250 Unemployment Compensation				88.67
260 Workers' Compensation				834.91
280 Other Post-Employment Benefits (OPEB)				2,428.35
<b>Total Personnel Services – Employee Benefits</b>				<b>\$10,822.81</b>
<b>500 <u>Other Purchased Services</u></b>				
580 Travel				107.00
<b>Total Other Purchased Services</b>				<b>\$107.00</b>
<b>Total 2830 Staff Services</b>				<b>\$110,170.54</b>

LEA : 129546003     Pine Grove Area SD

Printed 12/3/2018 4:21:36 PM

General Fund (10)

2831 Supervision of Staff Services	<u>Elementary</u>	<u>Secondary</u>	<u>Federal</u>	<u>Total</u>
100 <u>Personnel Services – Salaries</u>				
100 Personnel Services – Salaries				99,240.73
Total Personnel Services – Salaries				\$99,240.73
200 <u>Personnel Services – Employee Benefits</u>				
220 Social Security Contributions				7,470.88
250 Unemployment Compensation				88.67
260 Workers' Compensation				834.91
280 Other Post-Employment Benefits (OPEB)				2,428.35
Total Personnel Services – Employee Benefits				\$10,822.81
Total 2831 Supervision of Staff Services				\$110,063.54

LEA : 129546003     Pine Grove Area SD

Printed 12/3/2018 4:21:36 PM

General Fund (10)

2836 Staff Development Services – Non-Instructional, Non-Certified Staff Only	<u>Elementary</u>	<u>Secondary</u>	<u>Federal</u>	<u>Total</u>
500 <u>Other Purchased Services</u>				
580 Travel				107.00
Total Other Purchased Services				\$107.00
Total 2836 Staff Development Services – Non-Instructional, Non-Certified Staff Only				\$107.00

LEA : 129546003     Pine Grove Area SD

Printed 12/3/2018 4:21:36 PM

General Fund (10)				
2900 Other Support Services	<u>Elementary</u>	<u>Secondary</u>	<u>Federal</u>	<u>Total</u>
300 <u>Purchased Professional and Technical Services</u>				
322 Professional Educational Services – lus			222,892.83	222,892.83
Total Purchased Professional and Technical Services			\$222,892.83	\$222,892.83
400 <u>Purchased Property Services</u>				
440 Rentals				3,373.26
Total Purchased Property Services				\$3,373.26
Total 2900 Other Support Services			\$222,892.83	\$226,266.09

LEA : 129546003     Pine Grove Area SD

Printed 12/3/2018 4:21:36 PM

General Fund (10)

2910 Support Services Not Listed Elsewhere In the 2000 Series

Elementary                      Secondary                      Federal                      Total

300 Purchased Professional and Technical Services

322 Professional Educational Services – lus                      222,892.83                      222,892.83

**Total Purchased Professional and Technical Services                      \$222,892.83                      \$222,892.83**

400 Purchased Property Services

440 Rentals                      3,373.26

**Total Purchased Property Services                      \$3,373.26**

**Total 2910 Support Services Not Listed Elsewhere In the 2000 Series                      \$222,892.83                      \$226,266.09**



LEA : 129546003     Pine Grove Area SD

Printed 12/3/2018 4:21:39 PM

<b>General Fund (10)</b>	
<b>3000 Operation of Non-Instructional Services</b>	<b><u>Total</u></b>
<b>100 <u>Personnel Services – Salaries</u></b>	
100 Personnel Services – Salaries	259,324.10
<b>Total Personnel Services – Salaries</b>	<b>\$259,324.10</b>
<b>200 <u>Personnel Services – Employee Benefits</u></b>	
210 Group Insurance – Contracted Provider	8,057.09
220 Social Security Contributions	19,757.52
230 PSERS Retirement Contributions	79,108.81
250 Unemployment Compensation	311.03
260 Workers' Compensation	2,178.40
<b>Total Personnel Services – Employee Benefits</b>	<b>\$109,412.85</b>
<b>300 <u>Purchased Professional and Technical Services</u></b>	
324 Professional Educational Services – Employee Training and Development Services	39,150.00
390 Other Purchased Professional and Technical Services	23,330.50
<b>Total Purchased Professional and Technical Services</b>	<b>\$62,480.50</b>
<b>400 <u>Purchased Property Services</u></b>	
420 Utility Services	9,168.08
430 Repairs and Maintenance Services	1,900.00
440 Rentals	80.00
<b>Total Purchased Property Services</b>	<b>\$11,148.08</b>
<b>500 <u>Other Purchased Services</u></b>	
580 Travel	3,995.17
<b>Total Other Purchased Services</b>	<b>\$3,995.17</b>
<b>600 <u>Supplies</u></b>	
610 General Supplies	23,288.75
620 Energy	237.63
630 Food	1,761.36
640 Books and Periodicals	154.50
<b>Total Supplies</b>	<b>\$25,442.24</b>
<b>800 <u>Other Objects</u></b>	
810 Dues and Fees	2,203.00
890 Miscellaneous Expenditures	6,109.89
<b>Total Other Objects</b>	<b>\$8,312.89</b>
<b>Total 3000 Operation of Non-Instructional Services</b>	<b>\$480,115.83</b>

LEA : 129546003     Pine Grove Area SD

Printed 12/3/2018 4:21:39 PM

General Fund (10)				
3200 Student Activities				
	<u>Elementary</u>	<u>Secondary</u>	<u>Federal</u>	<u>Total</u>
100 <u>Personnel Services – Salaries</u>				
100 Personnel Services – Salaries				259,324.10
Total Personnel Services – Salaries				\$259,324.10
200 <u>Personnel Services – Employee Benefits</u>				
210 Group Insurance – Contracted Provider				8,057.09
220 Social Security Contributions				19,757.52
230 PSERS Retirement Contributions				79,108.81
250 Unemployment Compensation				311.03
260 Workers' Compensation				2,178.40
Total Personnel Services – Employee Benefits				\$109,412.85
300 <u>Purchased Professional and Technical Services</u>				
324 Professional Educational Services – Employee Training and Development Services				39,150.00
390 Other Purchased Professional and Technical Services				23,330.50
Total Purchased Professional and Technical Services				\$62,480.50
400 <u>Purchased Property Services</u>				
420 Utility Services				9,168.08
430 Repairs and Maintenance Services				1,900.00
440 Rentals				80.00
Total Purchased Property Services				\$11,148.08
500 <u>Other Purchased Services</u>				
580 Travel				3,995.17
Total Other Purchased Services				\$3,995.17
600 <u>Supplies</u>				
610 General Supplies				23,288.75
620 Energy				237.63
630 Food				1,761.36
640 Books and Periodicals				154.50
Total Supplies				\$25,442.24
800 <u>Other Objects</u>				
810 Dues and Fees				2,203.00
890 Miscellaneous Expenditures				6,109.89
Total Other Objects				\$8,312.89
Total 3200 Student Activities				\$480,115.83

LEA : 129546003     Pine Grove Area SD

Printed 12/3/2018 4:21:40 PM

General Fund (10)

4000 Facilities Acquisition, Construction and Improvement Services

Total

700 <u>Property</u>	
720 Buildings	1,093,488.35
<b>Total Property</b>	<b>\$1,093,488.35</b>
<b>Total 4000 Facilities Acquisition, Construction and Improvement Services</b>	<b>\$1,093,488.35</b>

LEA : 129546003     Pine Grove Area SD

Printed 12/3/2018 4:21:40 PM

General Fund (10)

4500 Building Acquisition and Construction Services – Original and Additional	<u>Elementary</u>	<u>Secondary</u>	<u>Federal</u>	<u>Total</u>
700 <u>Property</u>				
720 Buildings				1,093,488.35
Total Property				\$1,093,488.35
Total 4500 Building Acquisition and Construction Services – Original and Additional				\$1,093,488.35

LEA : 129546003     Pine Grove Area SD

Printed 12/3/2018 4:21:45 PM

General Fund (10)	
5000 Other Expenditures and Financing Uses	<u>Total</u>
800 <u>Other Objects</u>	
830 Interest	307,987.50
880 Refunds of Prior Years' Receipts	17,322.28
Total Other Objects	\$325,309.78
900 <u>Other Uses of Funds</u>	
910 Redemption of Principal	1,721,550.00
Total Other Uses of Funds	\$1,721,550.00
Total 5000 Other Expenditures and Financing Uses	\$2,046,859.78

LEA : 129546003     Pine Grove Area SD

Printed 12/3/2018 4:21:45 PM

General Fund (10)

5100 Debt Service / Other Expenditures and Financing Uses	<u>Elementary</u>	<u>Secondary</u>	<u>Federal</u>	<u>Total</u>
800 <u>Other Objects</u>				
830 Interest				307,987.50
880 Refunds of Prior Years' Receipts				17,322.28
Total Other Objects				\$325,309.78
900 <u>Other Uses of Funds</u>				
910 Redemption of Principal				1,721,550.00
Total Other Uses of Funds				\$1,721,550.00
Total 5100 Debt Service / Other Expenditures and Financing Uses				\$2,046,859.78

LEA : 129546003 Pine Grove Area SD

Printed 12/3/2018 4:21:45 PM

General Fund (10)

5110 Debt Service	<u>Elementary</u>	<u>Secondary</u>	<u>Federal</u>	<u>Total</u>
800 <u>Other Objects</u>				
830 Interest				307,987.50
Total Other Objects				\$307,987.50
900 <u>Other Uses of Funds</u>				
910 Redemption of Principal				1,721,550.00
Total Other Uses of Funds				\$1,721,550.00
Total 5110 Debt Service				\$2,029,537.50

LEA : 129546003     Pine Grove Area SD

Printed 12/3/2018 4:21:45 PM

General Fund (10)

5130 Refund of Prior Year Revenues / Receipts	<u>Elementary</u>	<u>Secondary</u>	<u>Federal</u>	<u>Total</u>
800 <u>Other Objects</u>				
880 Refunds of Prior Years' Receipts				17,322.28
Total Other Objects				\$17,322.28
Total 5130 Refund of Prior Year Revenues / Receipts				\$17,322.28



LEA : 129546003     Pine Grove Area SD

Printed 12/3/2018 4:21:43 PM

Other Capital Projects Fund (39)

<b>4000 Facilities Acquisition, Construction and Improvement Services</b>		<b><u>Total</u></b>
<b>300 <u>Purchased Professional and Technical Services</u></b>		
330 Other Professional Services	345.00	
<b>Total Purchased Professional and Technical Services</b>		<b>\$345.00</b>
<b>400 <u>Purchased Property Services</u></b>		
450 Construction Services	6,870.00	
<b>Total Purchased Property Services</b>		<b>\$6,870.00</b>
<b>600 <u>Supplies</u></b>		
610 General Supplies	9,031.50	
<b>Total Supplies</b>		<b>\$9,031.50</b>
<b>700 <u>Property</u></b>		
710 Land and Improvements	8,700.00	
752 Capital Equipment – Original and Additional	28,683.30	
762 Capitalized Equipment - Replacement	14,220.43	
<b>Total Property</b>		<b>\$51,603.73</b>
<b>Total 4000 Facilities Acquisition, Construction and Improvement Services</b>		<b>\$67,850.23</b>

LEA : 129546003     Pine Grove Area SD

Printed 12/3/2018 4:21:43 PM

Other Capital Projects Fund (39)				
4100 Site Acquisition Services – Original and Additional	<u>Elementary</u>	<u>Secondary</u>	<u>Federal</u>	<u>Total</u>
300 <u>Purchased Professional and Technical Services</u>				
330 Other Professional Services				345.00
Total Purchased Professional and Technical Services				\$345.00
400 <u>Purchased Property Services</u>				
450 Construction Services				6,870.00
Total Purchased Property Services				\$6,870.00
600 <u>Supplies</u>				
610 General Supplies				9,031.50
Total Supplies				\$9,031.50
700 <u>Property</u>				
710 Land and Improvements				8,700.00
752 Capital Equipment – Original and Additional				28,683.30
762 Capitalized Equipment - Replacement				14,220.43
Total Property				\$51,603.73
Total 4100 Site Acquisition Services – Original and Additional				\$67,850.23

LEA : 129546003 Pine Grove Area SD

Printed 12/3/2018 4:21:48 PM

	<u>General Fund(10)</u>	<u>Public Purpose Trust(27)</u>	<u>Other Compt Approved</u> <u>(28)</u>	<u>Athletic / Activity(29)</u>	<u>Capital Reserve (690.</u> <u>1850)(31)</u>
<b>1000 <u>Instruction</u></b>					
1100 Regular Programs - Elementary / Secondary	10,342,992.77				
1200 Special Programs - Elementary / Secondary	2,242,078.93				
1300 Vocational Education	898,159.79				
1400 Other Instructional Programs - Elementary / Secondary	217,660.39				
<b>Total Instruction</b>	<b>\$13,700,891.88</b>				
<b>2000 <u>Support Services</u></b>					
2100 Support Services - Students	780,354.46				
2200 Support Services - Instructional Staff	1,089,815.81				
2300 Support Services - Administration	1,064,062.17				
2400 Support Services - Pupil Health	248,053.49				
2500 Support Services - Business	366,007.86				
2600 Operation and Maintenance of Plant Services	1,878,659.51				
2700 Student Transportation Services	1,255,340.08				
2800 Support Services - Central	110,170.54				
2900 Other Support Services	226,266.09				
<b>Total Support Services</b>	<b>\$7,018,730.01</b>				
<b>3000 <u>Operation of Non-Instructional Services</u></b>					
3200 Student Activities	480,115.83				
<b>Total Operation of Non-Instructional Services</b>	<b>\$480,115.83</b>				
<b>4000 <u>Facilities Acquisition, Construction and Improvement Services</u></b>					
4100 Site Acquisition Services - Original and Additional					
4500 Building Acquisition and Construction Services - Original and Additional	1,093,488.35				
<b>Total Facilities Acquisition, Construction and Improvement</b>	<b>\$1,093,488.35</b>				
<b>5000 <u>Other Expenditures and Financing Uses</u></b>					
5100 Debt Service / Other Expenditures and Financing Uses	2,046,859.78				
<b>Total Other Expenditures and Financing Uses</b>	<b>\$2,046,859.78</b>				
<b>TOTAL ACTUAL EXPENDITURES &amp; OTHER FINANCING USES</b>	<b>\$24,340,085.85</b>				

LEA : 129546003     Pine Grove Area SD

Printed 12/3/2018 4:21:48 PM

	<u>Capital Reserve (1431)(32)</u>	<u>Other Capital Projects Fund(39)</u>	<u>Debt Service(40)</u>	<u>Permanent(90)</u>	<u>Total</u>
<b>1000 Instruction</b>					
1100 Regular Programs - Elementary / Secondary					10,342,992.77
1200 Special Programs - Elementary / Secondary					2,242,078.93
1300 Vocational Education					898,159.79
1400 Other Instructional Programs - Elementary / Secondary					217,660.39
<b>Total Instruction</b>					<b>\$13,700,891.88</b>
<b>2000 Support Services</b>					
2100 Support Services - Students					780,354.46
2200 Support Services - Instructional Staff					1,089,815.81
2300 Support Services - Administration					1,064,062.17
2400 Support Services - Pupil Health					248,053.49
2500 Support Services - Business					366,007.86
2600 Operation and Maintenance of Plant Services					1,878,659.51
2700 Student Transportation Services					1,255,340.08
2800 Support Services - Central					110,170.54
2900 Other Support Services					226,266.09
<b>Total Support Services</b>					<b>\$7,018,730.01</b>
<b>3000 Operation of Non-Instructional Services</b>					
3200 Student Activities					480,115.83
<b>Total Operation of Non-Instructional Services</b>					<b>\$480,115.83</b>
<b>4000 Facilities Acquisition, Construction and Improvement Services</b>					
4100 Site Acquisition Services - Original and Additional		67,850.23			67,850.23
4500 Building Acquisition and Construction Services - Original and Additional					1,093,488.35
<b>Total Facilities Acquisition, Construction and Improvement</b>		<b>\$67,850.23</b>			<b>\$1,161,338.58</b>
<b>5000 Other Expenditures and Financing Uses</b>					
5100 Debt Service / Other Expenditures and Financing Uses					2,046,859.78
<b>Total Other Expenditures and Financing Uses</b>					<b>\$2,046,859.78</b>
<b>TOTAL ACTUAL EXPENDITURES &amp; OTHER FINANCING USES</b>		<b>\$67,850.23</b>			<b>\$24,407,936.08</b>

LEA : 129546003     Pine Grove Area SD

Printed 12/3/2018 4:21:54 PM

PSERS Salary Data (Salary Data should relate to the General Fund only)

Amount	Description	Amount
	Total Salary Base for salaries subject to PSERS withholding	9,318,847.43
	Total Federally Funded salaries subject to PSERS withholding	248,710.00

Title I Expenditure Data

Amount	Description	Amount
	Expenditures Funded with Current Title I Funds	386,488.00
	Expenditures Funded with Carry over Title I Funds	
Total	Title I Expenditure Data	\$386,488.00

Benefits for Staff Relative to Collective Bargaining Agreements

	OBJECT	COVERED	NOT COVERED	TOTAL
10 General Fund	No Self Insurance data to report			
	211 Medical Insurance	2,533,375.47	51,701.54	2,585,077.01
	212 Dental Insurance	110,448.81	2,254.06	112,702.87
	215 Eye Care Insurance	24,884.80	507.85	25,392.65
	216 Prescription Insurance			
	271 Self-Insurance Medical Benefits			
	272 Self-Insurance Dental Benefits			
	275 Self-Insurance Eye Care Benefits			
	276 Self-Insurance Prescription Benefits			
	FUND TOTAL	\$2,668,709.08	\$54,463.45	\$2,723,172.53
50 Enterprise Fund	No Self Insurance data to report			
	211 Medical Insurance			
	212 Dental Insurance			
	215 Eye Care Insurance			
	216 Prescription Insurance			
	271 Self-Insurance Medical Benefits			
	272 Self-Insurance Dental Benefits			
	275 Self-Insurance Eye Care Benefits			
	276 Self-Insurance Prescription Benefits			
	FUND TOTAL			
60 Internal Service Fund	No Self Insurance data to report			
	211 Medical Insurance			
	212 Dental Insurance			
	215 Eye Care Insurance			
	216 Prescription Insurance			
	271 Self-Insurance Medical Benefits			
	272 Self-Insurance Dental Benefits			
	275 Self-Insurance Eye Care Benefits			
	276 Self-Insurance Prescription Benefits			
	FUND TOTAL			
Total of All Funds		\$2,668,709.08	\$54,463.45	\$2,723,172.53

LEA : 129546003     Pine Grove Area SD

Printed 12/3/2018 4:21:56 PM

Function	Special Education (Prior Year)	Nonspecial Education (Prior Year)	Total (Prior Year)	Special Education (Current Year)	Nonspecial Education (Current Year)	Total (Current Year)
2120 Guidance Services	51,983.00	347,890.00	399,873.00	60,224.00	369,947.63	430,171.63
2140 Psychological Services	232,428.96		232,428.96	235,579.89		235,579.89
2150 Speech Pathology and Audiology Services						
2160 Social Work Services	110,549.00		110,549.00	86,008.00	27,916.34	113,924.34
2260 Instruction and Curriculum Development Services	305,897.67	16,100.00	321,997.67	213,808.00	165,550.91	379,358.91
2350 Legal and Accounting Services		25,517.52	25,517.52		68,696.00	68,696.00
2420 Medical Services	1,490.00		1,490.00	1,490.00	40.00	1,530.00
2440 Nursing Services		223,202.00	223,202.00		246,111.00	246,111.00
2700 Student Transportation Services	36,364.00	1,175,765.00	1,212,129.00	36,364.00	1,208,737.00	1,245,101.00
Total	\$738,712.63	\$1,788,474.52	\$2,527,187.15	\$633,473.89	\$2,086,998.88	\$2,720,472.77

LEA : 129546003     Pine Grove Area SD

Printed 12/3/2018 4:21:58 PM

(PRINCIPAL AMOUNTS ONLY)								
<u>GOVERNMENTAL FUNDS/ ACTIVITIES</u>	Short-Term Borrowing	General Obligation Bonds/Notes	Authority Building Obligations	Other Long-Term Debt	Other Post- Employment Benefits (OPEB)	Compensated Absences	Net Pension Liability	Total
1. Debt at Beginning of Fiscal Year		12,520,000.00			1,305,485.00	319,046.00	35,978,000.00	50,122,531.00
2. Additional Debt Incurred During Year					4,378,706.00	81,908.00		4,460,614.00
3. Retirements and Repayments		1,720,000.00			452,293.00		1,258,000.00	3,430,293.00
4. Debt at End of Fiscal Year		10,800,000.00			5,231,898.00	400,954.00	34,720,000.00	51,152,852.00
5. Accreted Interest at End Of Fiscal Year								
6. Total Debt and Accreted Interest		10,800,000.00			5,231,898.00	400,954.00	34,720,000.00	51,152,852.00
7. Current Portion P&I - Due within 1 year		2,030,037.50						2,030,037.50
8. Interest Paid during current fiscal year		307,987.50						307,987.50

(PRINCIPAL AMOUNTS ONLY)							
<u>PROPRIETARY FUNDS</u>							
1. Debt at Beginning of Fiscal Year							
2. Additional Debt Incurred During Year							
3. Retirements and Repayments							
4. Debt at End of Fiscal Year							
5. Accreted Interest at End Of Fiscal Year							
6. Total Debt and Accreted Interest							
7. Current Portion P&I - Due within 1 year							
8. Interest Paid during current fiscal year							



LEA : 129546003 Pine Grove Area SD

Printed 12/3/2018 4:21:58 PM

Total Principal and Interest Payments Made by Your School - All Funds

Function	Fund		Principal (910)	Principal (920)	Interest (830)	Total (Principal +Interest)	Misc Other Uses (990)
5110	10	General Fund	1,721,550.00		307,987.50	2,029,537.50	
5110	20	Special Revenue Funds					
5110	30	Capital Projects Funds					
5110	40	Debt Service Fund					
5110	90	Permanent Fund					
5120	10	General Fund					
5120	20	Special Revenue Funds					
5120	30	Capital Projects Funds					
5120	40	Debt Service Fund					
Total Debt Payments - Governmental Funds			\$1,721,550.00		\$307,987.50	\$2,029,537.50	

Function	Fund		Principal (910)	Principal (920)	Interest (830)	Total (Principal +Interest)
5110	50	Enterprise Fund				
5110	60	Internal Service Fund				
5120	50	Enterprise Fund				
5120	60	Internal Service Fund				
Total Debt Payments - Proprietary Funds						

LEA : 129546003     Pine Grove Area SD

Printed 12/3/2018 4:21:58 PM

**Debt Details**  
**Governmental Funds/ Activities**

Debt Category	Debt Issue Date (MM/YYYY)	Principal Amounts Only				Current Portion Due Within One Year (Principal and Interest)	Interest Paid During Fiscal Year
		Debt at Beginning of Fiscal Year	Additions	Reductions / Repayments	Debt at End of Fiscal Year		
General Obligation Bonds/Notes – CIB	05/2015	4,205,000.00		865,000.00	3,340,000.00	117,527.50	84,827.50
General Obligation Bonds/Notes – CIB	05/2012	8,315,000.00		855,000.00	7,460,000.00	1,912,510.00	223,160.00
Compensated Absences		319,046.00	81,908.00		400,954.00		
Other Post-Employment Benefits (OPEB)		1,305,485.00	4,378,706.00	452,293.00	5,231,898.00		
Net Pension Liability		35,978,000.00		1,258,000.00	34,720,000.00		
Totals for Debt Entered:		\$50,122,531.00	\$4,460,614.00	\$3,430,293.00	\$51,152,852.00	\$2,030,037.50	\$307,987.50

LEA : 129546003     Pine Grove Area SD

Printed 12/3/2018 4:22:00 PM

General Fund (10)

Section 1: Tuition/Purchased Services as Reported within Expenditure Detail	Amount
Tuition Reported in General Fund Expenditures 1000-560	1,218,880.74
Purchased Services in General Fund Expenditures 1000-594 and 1000-597	
<b>Section 1 Total</b>	<b>\$1,218,880.74</b>

Section 2: Tuition Paid to Institution Types During Fiscal Year	Tuition Paid For Nonspecial Education	Tuition Paid For Special Education	Total
1 1306 Institutions		312,268.91	312,268.91
2 Institutionalized Children's Programs			
3 Juveniles Incarcerated in Adult Facilities			
4 Residential Treatment Facilities			
5 Other Local Education Agencies		12,894.54	12,894.54
6 Brick and Mortar Charter Schools			
7 Cyber Charter Schools	311,685.29		311,685.29
8 Career and Technology Centers	582,032.00		582,032.00
9 Approved Private Schools			
10 PA Chartered Schools for the Deaf and Blind			
11 Private Residential Rehabilitative Institutions			
12 Juvenile Detention Centers			
13 Special Program Jointures			
14 Other Tuition Not Included Elsewhere In This Section			
<b>Section 2 Total</b>	<b>\$893,717.29</b>	<b>\$325,163.45</b>	<b>\$1,218,880.74</b>

LEA : 129546003     Pine Grove Area SD

Printed 12/3/2018 4:22:01 PM

Food Service / Cafeteria Operations Fund (51)

1000 Instruction		<u>Total</u>
400	<u>Purchased Property Services</u>	
430	Repairs and Maintenance Services	1,755.00
Total Purchased Property Services		\$1,755.00
500	<u>Other Purchased Services</u>	
599	Other Miscellaneous Purchased Services	794,480.00
Total Other Purchased Services		\$794,480.00
600	<u>Supplies</u>	
610	General Supplies	37,288.00
Total Supplies		\$37,288.00
700	<u>Property</u>	
740	Depreciation	3,470.00
Total Property		\$3,470.00
800	<u>Other Objects</u>	
890	Miscellaneous Expenditures	246.00
Total Other Objects		\$246.00
Total 1000 Instruction		\$837,239.00

LEA : 129546003     Pine Grove Area SD

Printed 12/3/2018 4:22:01 PM

Food Service / Cafeteria Operations Fund (51)

1100 Regular Programs – Elementary / Secondary

Elementary                      Secondary                      Federal                      Total

400 <u>Purchased Property Services</u>				
430 Repairs and Maintenance Services				1,755.00
<b>Total Purchased Property Services</b>				<b>\$1,755.00</b>
500 <u>Other Purchased Services</u>				
599 Other Miscellaneous Purchased Services				794,480.00
<b>Total Other Purchased Services</b>				<b>\$794,480.00</b>
600 <u>Supplies</u>				
610 General Supplies				37,288.00
<b>Total Supplies</b>				<b>\$37,288.00</b>
700 <u>Property</u>				
740 Depreciation				3,470.00
<b>Total Property</b>				<b>\$3,470.00</b>
800 <u>Other Objects</u>				
890 Miscellaneous Expenditures				246.00
<b>Total Other Objects</b>				<b>\$246.00</b>
<b>Total 1100 Regular Programs – Elementary / Secondary</b>				<b>\$837,239.00</b>

LEA : 129546003     Pine Grove Area SD

Printed 12/3/2018 4:22:01 PM

Food Service / Cafeteria Operations Fund (51)

1110 Regular Programs	<u>Elementary</u>	<u>Secondary</u>	<u>Federal</u>	<u>Total</u>
400 <u>Purchased Property Services</u>				
430 Repairs and Maintenance Services				1,755.00
Total Purchased Property Services				\$1,755.00
500 <u>Other Purchased Services</u>				
599 Other Miscellaneous Purchased Services				794,480.00
Total Other Purchased Services				\$794,480.00
600 <u>Supplies</u>				
610 General Supplies				37,288.00
Total Supplies				\$37,288.00
700 <u>Property</u>				
740 Depreciation				3,470.00
Total Property				\$3,470.00
800 <u>Other Objects</u>				
890 Miscellaneous Expenditures				246.00
Total Other Objects				\$246.00
Total 1110 Regular Programs				\$837,239.00

	<u>Food Service(51)</u>	<u>Child Care Operations(52)</u>	<u>Other Enterprise(58)</u>	<u>Internal Service(60)</u>	<u>Total</u>
<b>1000 Instruction</b>					
1100 Regular Programs - Elementary / Secondary	837,239.00				837,239.00
<b>Total Instruction</b>	<b>\$837,239.00</b>				<b>\$837,239.00</b>
<b>TOTAL ACTUAL EXPENDITURES &amp; OTHER FINANCING USES</b>	<b>\$837,239.00</b>				<b>\$837,239.00</b>